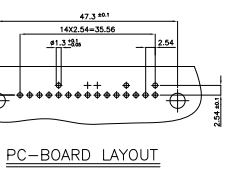
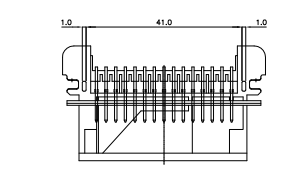
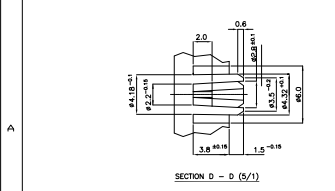
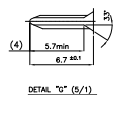
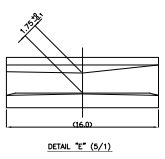
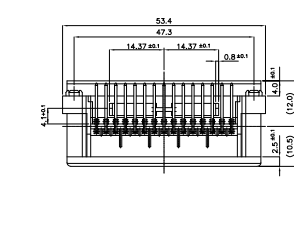
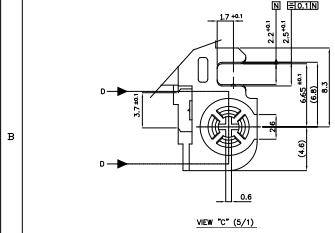
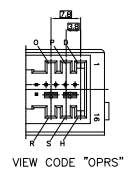
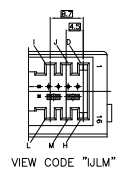
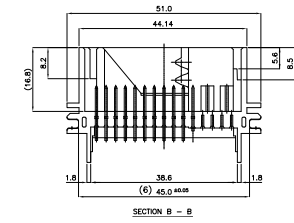
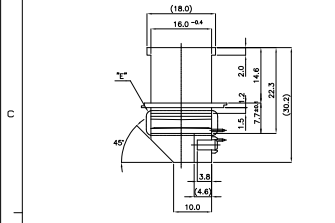
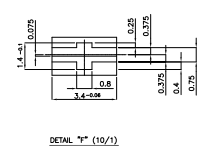
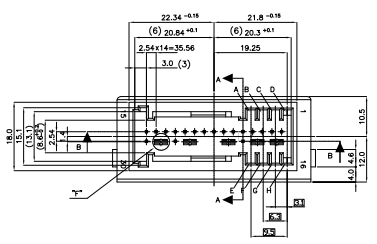
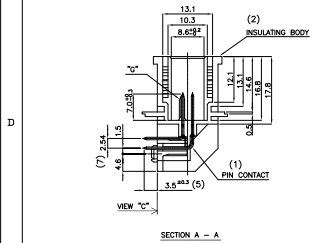


REV	DATE	DESCRIPTION	BY	CHK	APPV
R		REVISED(PC00-0005-02)	DAJAP, YG	MS	CS
S		REVISED(PC00-0003-03)	YJ, JAG, YG	MS	CS
T		REVISED(PC00-0001-03)	SHALU, YG	YD	CS
U		REVISED(PC00-0047-04)	YJ, JAG, YG	YD	CS
V		REVISED(PC00-0250-04)	YJ, JAG, YG	YD	CS
W		REVISED(ECR-06-004472)	YJ, JAG, YG	SH	JK
W1		REVISED(ECR-06-024182)	YJ, JAG, YG	BH	JK
AA		REVISED(ECR-07-005787)	YJ, JAG, YG	BH	JK
AB		REVISED(ECR-08-000372)	YJ, JAG, YG	SH	HG



- (1) 추가
- 1) 용접용 CuS₂6
 - 2) 용접용 CuS₂6 0.8um Au, 용접용은 Ni 3um
V: 납땜용 Ni 1-4um S₂Plating, 용접용은 Ni 2.1um Ni
V-Tin: 2.0-4.0um Pre-Tin Plated, 용접용은 1.27-2.2um Ni Plating
- (3) 검사방법
- 1) X250 배 V=25mm/min, 단면 검사
 - 2) X400 배 V=100mm/min V=V-NORM 80101에 의해
- (4) TE 규격 108-01007에 따른 규격 사용
- + 코어: 100% 단면 검사
 - + 코어: 100% 단면 검사
 - + 코어: 100% 단면 검사
 - + 코어: 100% 단면 검사
 - + 코어: 100% 단면 검사
- (5) 납땜 부위
- (6) 파수는 Center Line가 기준이므로 측정 불가
- (7) 파수 108은 1.3mm 간격으로 측정 함. (PC-BOARD LAT OUT 참조)

- NOTES
- (1) PIN CONTACT: ±0.03
 - (2) FINISH: MATING AREA: > 0.8um Au, UNDER 3um Ni
(3) SOLDERING AREA: > 1-4um S₂Plating, UNDER < 2.1um Ni
(4) Tin: 2.0-4.0um Pre-Tin Plated Over 1.27-2.2um Ni Plating
(5) DETECTION AS SEPARATE OPERATION
+ X250 배 V=25mm/min, AFTER SOLDERING STRESS
+ X400 배 V=100mm/min, ACCORDING TO V=V-NORM 80101
 - (6) ENVIRONMENTAL REQUIREMENTS ACCORDING TO TE SPEC 108-61007
+ ALL 18 HRS REALIZABLE THROUGH INSERTS
+ NO KOSHIR-EFFECT BY ASSEMBLY FORCE < 50N
+ DRAWING KEY IS (0-18)
+ FREE OF LOOSE METAL PARTS
+ PIN CONNECTOR; FREE OF GUMMUNG (≤ 50ppm)
 - (7) INSULATING BODY
1) MATERIAL: PBT-30GF(VALOX 420-100)
2) COLOR: CONSULT THE DRAWING
3) ALLOWED RECYCLED MATERIAL MAX 25%
 - (8) IN THE AREA OF KOSHIR FREE SPACE THERE IS UP TO +0.2 PERMISSIBLE
 - (9) MATING AREA
 - (10) SOLDERING AREA
(11) MEASURED TO THE CENTER LINE OF THE INSULATING BODY
 - (12) CONNECTIONS SUITABLE FOR HOLE DIAMETER 1.3, SEE PC-BOARD LAYOUT

<p>APPROVED FOR PUBLICATION</p> <p>DATE: 1/13/04</p> <p>BY: [Signature]</p>	<p>REVISIONS</p> <p>DATE: 1/13/04</p> <p>BY: [Signature]</p>	<p>DESCRIPTION</p> <p>DATE: 1/13/04</p> <p>BY: [Signature]</p>	<p>APPROVED FOR PUBLICATION</p> <p>DATE: 1/13/04</p> <p>BY: [Signature]</p>
---	--	--	---

INSTRUCTIONS: 1. DIMENSIONS: mm, 2. FINISH: MATING AREA: > 0.8um Au, UNDER 3um Ni, 3. SOLDERING AREA: > 1-4um S₂Plating, UNDER < 2.1um Ni, 4. Tin: 2.0-4.0um Pre-Tin Plated Over 1.27-2.2um Ni Plating, 5. DETECTION AS SEPARATE OPERATION, 6. ENVIRONMENTAL REQUIREMENTS ACCORDING TO TE SPEC 108-61007, 7. INSULATING BODY, 8. IN THE AREA OF KOSHIR FREE SPACE THERE IS UP TO +0.2 PERMISSIBLE, 9. MATING AREA, 10. SOLDERING AREA, 11. MEASURED TO THE CENTER LINE OF THE INSULATING BODY, 12. CONNECTIONS SUITABLE FOR HOLE DIAMETER 1.3, SEE PC-BOARD LAYOUT.



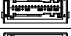

THE DRAWING IS UNAPPROVED		RELAY FOR PUBLICATION		REVOLUTIONS	
COPYRIGHT		BY TYCO ELECTRONICS CORPORATION, ALL RIGHTS RESERVED		DATE	REV
8	7	6	5	4	3
2-85188-9	K - M	ORANGE BROWN (RAL 8033)	3720101538	ED2(D+P+2PT)	
2-85188-8	L - M	WHITE ALUMINIUM (RAL 9006)	3720101537	ED2(D+2PT)	
2-85188-7	K - L	GREEN (RAL 6002)	3720101536	R099(D+P+2PT)	
2-85188-6	I - M	CLARET VIOLET (RAL 4054)	E3720101328A	X3(D+P)	
2-85188-5	I - L	LUMINOUS ORANGE (RAL 2005)	E3720101327A	X3(D)	
2-85188-4	J - N	YELLOW ORANGE (RAL 2000)	3720101535	R099(D+2PT)	
2-85188-3	J - M	TRAFFIC BLUE (RAL 5017)	3720101531	ET(D+P)	
2-85188-2	J - L	BEIGE GREY (RAL 7012)	E3720101328A	M(D+P)	
2-85188-1	I - N	KHAKI GREY (RAL 7009)	E3720101325A	M(D)	
1-85188-9	I - J	LUMINOUS YELLOW (RAL 1026)	3720101534	ET(D)	
1-85188-8	J - K	TURQUOISE GREEN (RAL 6016)	3720101533	D52(D+P)	
1-85188-7	I - K	PASTEL GREEN (RAL 6019)	3720101532	D52(D)	
1-85188-6	A - C	ROSE (RAL 3017)	E6304000 502A	X3(D+P)	
1-85188-5	A - G	GRAY WHITE (RAL 9002)	E6304000 501A	X3(D)	
1-85188-1	E - G	PINK (RAL 4003)	E6304000 101A	X3(D)	
85188-9	C - E	PINK (RAL 4003)	659339 76.54		
85188-8	A - D	LIGHT GRAY (RAL 7035)	605339 76.50		
85188-7	A - D	LIGHT GRAY (RAL 7035)	E630400 800A	M2	
85188-6	C - F	GREEN (RAL 6002)	E630400 800A	X3(D+P) - CHINA	
85188-5	C - H	TRAFFIC YELLOW (RAL 1023)	E630400 800A	X3(D) - CHINA	
85188-4	B - H	CLAY BROWN (RAL 8033)	E630400 400A	LX2(D+P+PT)	
85188-3	D - G	SIGNAL GREEN (RAL 6032)	E630400 300A	LX2(D+P)	
85188-2	B - G	CURRY YELLOW (RAL 1027)	E630400 200A	H-1(D+P)	
85188-1	D - E	TURQUOISE BLUE (RAL 6016)	E630400 100A	H-1(D)	
P/N	CODING	C O L O R	SUBJECT NO.	APPLICATION	
6-85188-5	D - G	BROWN BEIGE (RAL 1011)	3720102025	CA 6360 2F(D+P)	
6-85188-4	O - F	WINE RED (RAL 3005)	3720102024	HFJ K360 1F(D)	
6-85188-3	O - E	PIGEON BLUE (RAL 5014)	3720102002	MC-KINDW) EC 4F(D+P+2PT)	
6-85188-2	D - M	TRAFFIC PURPLE (RAL 4006)	3720102001	MC-KINDW) EC 3F(D+2PT)	
6-85188-1	D - L	PASTEL ORANGE (RAL 2003)	3720102000	MC-KINDW) STD 4F(D+P+2PT)	
5-85188-9	J - G	GREEN BEIGE (RAL 1000)	3720101999	MC-KINDW) STD 3F(D+2PT)	
5-85188-8	J - F	LIGHT IVORY (RAL 1015)	3720101952	A1(D+P)	
5-85188-7	J - E	ULTRAMARINE BLUE (RAL 5002)	3720101951	M2(D+P) F/L	
5-85188-6	I - G	NUT BROWN (RAL 8011)	3720101950	M2(D) F/L	
5-85188-5	I - F	LIGHT BLUE (RAL 5012)	3720101906	SR(D)	
5-85188-4	I - E	CURRY YELLOW (RAL 1027)	3720101772	RD COUPE(D+P+2PT) F/L	
5-85188-3	C - M	GRAPHITE BLACK (RAL 9011)	3720101771	RD COUPE(D+2PT) F/L	
5-85188-2	C - L	TURQUOISE BLUE (RAL 6016)	3720101770	RD COUPE(D+P) F/L	
5-85188-1	B - M	LIGHT PINK (RAL 3015)	3720101769	RD COUPE(D) F/L	
4-85188-8	B - L	CLAY BROWN (RAL 8033)	3720101692	J1(D+P)	
4-85188-7	A - M	WINE RED (RAL 3005)	3720101691	M2	
4-85188-5	B - C	BLUE GREY (RAL 7031)	3720101653	R099 F/L(D+P)	
4-85188-4	A - B	COBALT BLUE (RAL 5013)	3720101652	R099 F/L(D)	
4-85188-3	O - P	ROSE (RAL 3017)	3720101633	Q44(D)	
4-85188-2	M - N	GREEN (RAL 6002)	3720101639	HP(D+P)	
4-85188-1	L - N	TRAFFIC YELLOW (RAL 1023)	3720101640	M2(D+P)	
3-85188-8	A - F	BLUE LILAC (RAL 4005)	3720101547	RD COUPE(D+P)	
3-85188-7	A - H	BEIGE (RAL 1001)	3720101546	RD COUPE(D)	
3-85188-2	F - H	LIGHT IVORY (RAL 1015)	3720101944	A1 SHORT(D+P)	
3-85188-1	F - H	CLAY BROWN (RAL 8033)	3720101943	A1 SHORT(D)	
P/N	CODING	C O L O R	SUBJECT NO.	APPLICATION	
9-85188-2	D - E	Jet Black (RAL 9005)	3720102928	CHINA, HAE HAE2.5 (4FC)	
9-85188-1	D - E	Matin Yellow (RAL 1028)	3720102929	CHINA, HAE HAE2.5 (2FC)	
8-85188-9	O - H	Rosebrey Red (RAL 3027)	3720102911	CHINA, HAE 2.5 S11(1F)	
8-85188-8		THIS IS PART NO FOR EXPORT		PACKING TO 0-85188-5	
8-85188-7	P - E	BRIGHT BLUE (RAL 5007)	3720102202	IRAN, HAE 2.5(Q4B+2PT)	
8-85188-6	P - M	CURRY (RAL 1027)	3720102199	CHINA, HAE 2.5(Q4B+PM)	
8-85188-5	P - L	GREY WHITE (RAL 6032)	3720102198	CHINA, HAE 2.5(Q4B+PM+2PT)	
8-85188-4	O - S	SIGNAL GREEN (RAL 6032)	3720102197	CHINA, HAE 2.5 (D4B+PM)	
8-85188-3	J - S	MOSS GREEN (RAL 6005)	3720102132	CK 1, 4F(D+P)	
8-85188-2	I - S	PATINA GREEN (RAL 6000)	3720102133	K2 218, 2F(D+P)	
8-85188-1	D - S	RESEDA GREEN (RAL 6011)	3720102136	S11, 1F(D)	
7-85188-9	C - S	TRAFFIC ORANGE (RAL 2009)	3720102118	CF6470, Linbo	
7-85188-8	B - S	OPAL GREEN (RAL 6026)	3720102104	A1, 2F	
7-85188-7	A - S	GREEN BLUE (RAL 5001)	3720102105	A1, 1F	
7-85188-6	J - R	SIGNAL YELLOW (RAL 1003)	3720102099	HFJ 7110, 2F	
7-85188-5	I - R	RED BROWN (RAL 8012)	3720102076	A1, 4F 04MY	
7-85188-4	O - R	BEIGE GREY (RAL 7006)	3720102075	A1, 3F 04MY	
7-85188-3	D - R	TRAFFIC RED (RAL 3020)	3720102074	CA 7180, 2F(D+P)	
7-85188-2	C - R	BLACK OLIVE (RAL 6015)	3720102060	A11, 2F(D+P)	
7-85188-1	B - R	PLATINUM GREY (RAL 7036)	3720102045	CA72023, 2F(D+P)	
6-85188-9	A - R	LIGHT GREEN (RAL 6027)	3720102044	SU 2021(D + P)	
6-85188-8	O - M	SALMON PINK (RAL 3022)	3720102043	HFJ 7110(D + P + 2PT)	
6-85188-7	O - L	PASTEL VIOLET (RAL 4009)	3720102033	A11, M(D)	
6-85188-6	O - H	CRYSTAL WHITE (RAL 1013)	3720102031	S11, 2F(D +P)	
P/N	CODING	C O L O R	SUBJECT NO.	APPLICATION	


Tyco Electronics
 Kyungsan, Korea

AIR BAG 30P HEADER CAP HOUSING ASS'Y

TITLE: AIR BAG 30P HEADER CAP HOUSING ASS'Y
 FILE: 85188
 DATE: 2/1
 SCALE: 2/1
 SHEET: 2 OF 3
 DRAWN BY: JY AB

CUSTOMER DRAWING

9-85188-3	B - D	OCE-BLUE (RAL 5020)			
9-85188-4	B - E	Olive Gray (RAL 7002)			
9-85188-5	B - F	Header Violet (RAL 4003)			
9-85188-6	J - S	SIGNAL VIOLET (RAL 4008)		3720102132	CHINA, LF520 4PC(D+P+2PT)

 Tyco Electronics Kyungseong, Korea	
DRAWING NO. 9-85188-6 PART NO. 3720102132 TITLE AIR BAG 30P HEADER CAP HOUSING ASS'Y	DATE 08/18/05 DRAWN BY 85188 CHECKED BY 85188 SCALE 2/1 SHEET 3 OF 3 REV. 05