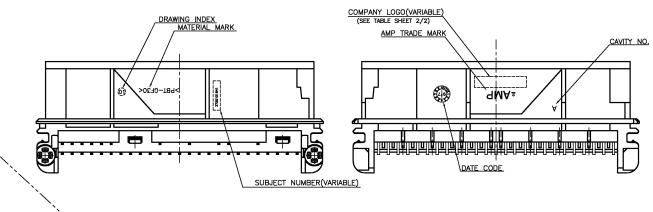
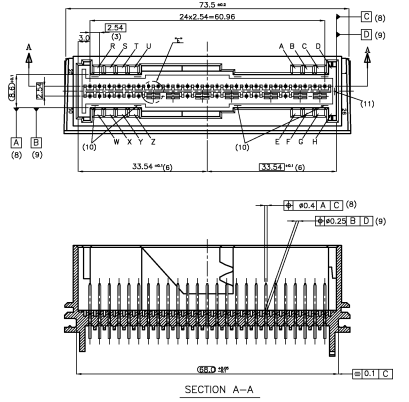
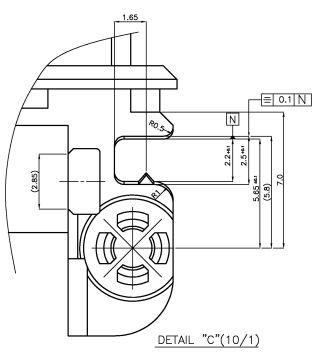
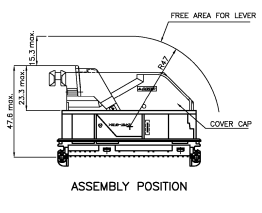
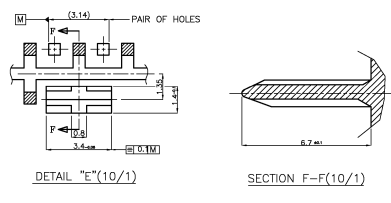
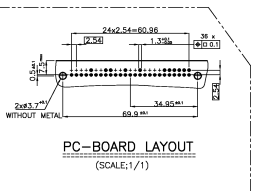
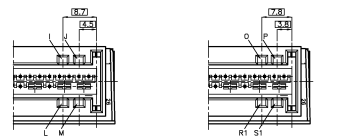
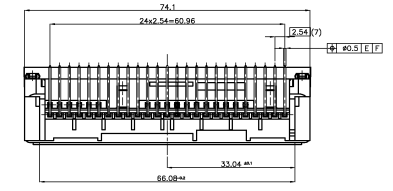
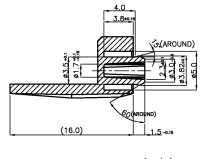
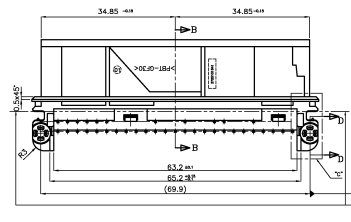
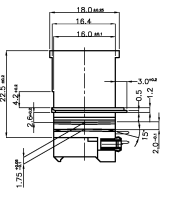


REVISIONS			
NO.	REV.	DESCRIPTION	DATE
S	REVISED	(FC00-0039-02)	22/MAY/98 MS CS
T	REVISED	(FC00-0002-03)	14/APR/98 MS CS
U	REVISED	(FC00-0072-03)	08/APR/98 YD. CS
V	REVISED	(FC00-0068-04)	06/MAY/98 YD. CS
W	REVISED	(FC00-0048-04)	23/MAY/98 YD. CS
Y	REVISED	(EGR-06-028031)	14/MAY/07 BH JK

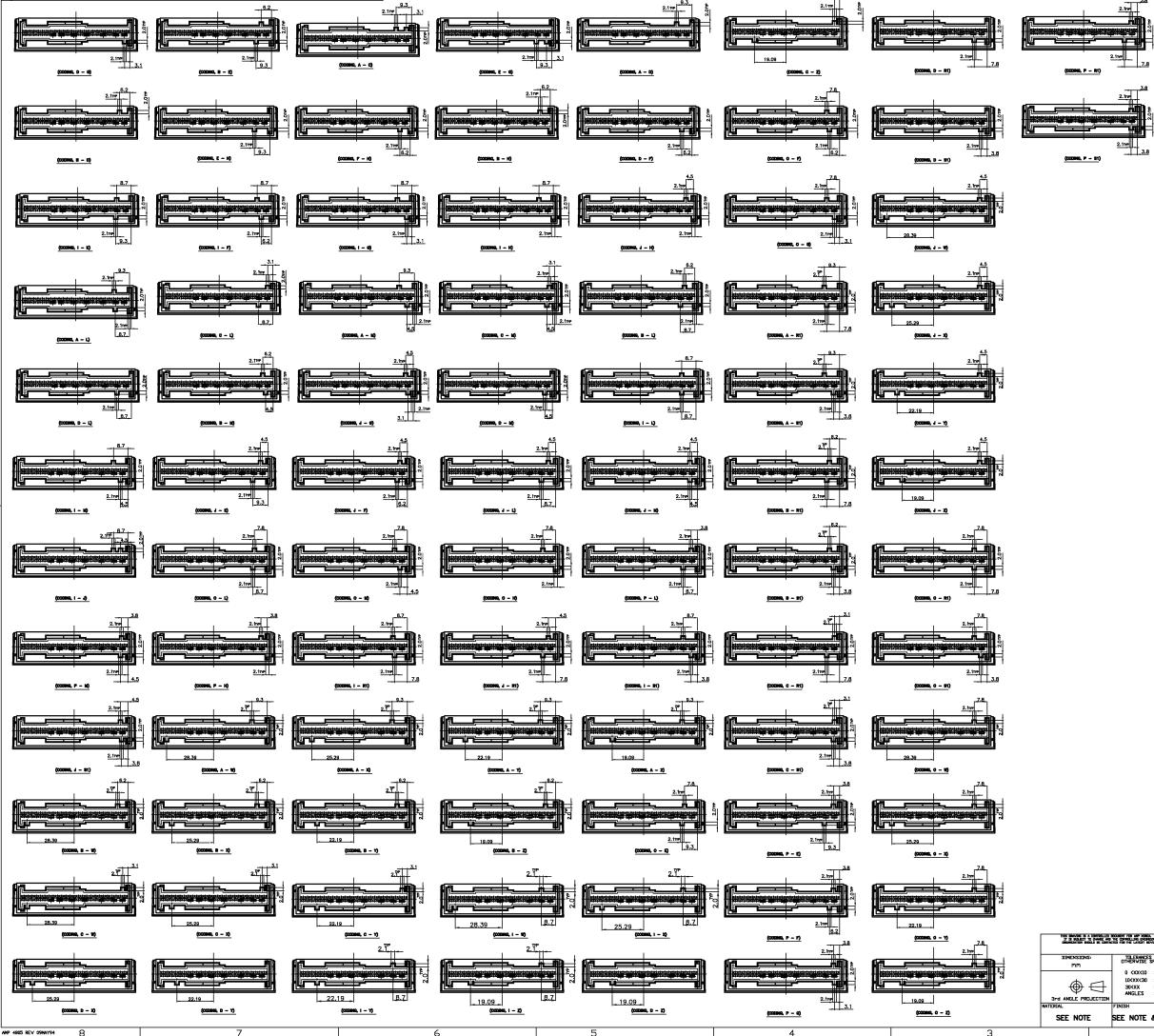


- NOTES**
- (1) PIN CONTACT :  $\pm 0.03$   
MATERIAL : Cu96
  - (2) FINISH : SEE TABLE SHEET 2/2.
  - (3) EXERTING FORCE IN DIRECTION OF CONNECTION (DETECTION AS SEPARATE OPERATION)
    - \* >20N but  $\leq 250\text{mm}^2/\text{min}$  AFTER SOLDERING STRESS
    - \* >40N but  $\leq 100\text{mm}^2/\text{min}$
  - (4) ENVIRONMENTAL REQUIREMENTS ACCORDING TO AMP SPEC 108-61031
    - \* NO MOSHIN-EFFECT BY ASSEMBLY FORCE  $\leq 50\text{N}$
    - \* DRAWING KEY IS (O-I)
    - \* FREE OF LOOSE METAL PARTS
    - \* PIN CONNECTOR : FREE OF CADMIUM ( $\leq 50\text{ppm}$ )
  - (5) INSULATING BODY
    - (1) MATERIAL : PET + GF30K
    - (2) COLOR : CONSULT THE DRAWING
    - (3) ALLOWED RECYCLED MATERIAL MAX 25%
    - (4) MATING AREA
    - (5) SOLDERING AREA
    - (6) MEASURED TO THE CENTER LINE OF THE INSULATING BODY
    - (7) CONNECTIONS SUITABLE FOR HOLE DIAMETER 1.3, SEE PC-BOARD LAYOUT
    - (8) MEASURED AT PIN TOP (7MM ABOVE BOTTOM)
    - (9) MEASURED AT THE BOTTOM
    - (10) MEASUREMENT POINTS FOR REFERENCE (A) AND (B)
    - (11) MEASUREMENT POINTS FOR REFERENCE (C) AND (D)



PARTS LIST		MATERIAL		DRAWING		DATE	
NO.	DESCRIPTION	SPEC.	QTY.	REV.	DATE	BY	CHK.
1	AIR BAG 50P HEADER ASSY	AMP SPEC 108-61031	1	00779	368213		
CUSTOMER DRAWING				SCALE: 2/1 SHEET 1 OF 2 REV. Y			

KEY-CODE LAYOUT



REVISEMENTS		DATE	BY	CHK	APP
1	INITIAL				

SEE 1 OF 2 SHEET

NO.	REVISION	DATE	BY	CHK	APP
1.1	INITIAL				
1.2	INITIAL				
1.3	INITIAL				
1.4	INITIAL				
1.5	INITIAL				
1.6	INITIAL				
1.7	INITIAL				
1.8	INITIAL				
1.9	INITIAL				
1.10	INITIAL				
1.11	INITIAL				
1.12	INITIAL				
1.13	INITIAL				
1.14	INITIAL				
1.15	INITIAL				
1.16	INITIAL				
1.17	INITIAL				
1.18	INITIAL				
1.19	INITIAL				
1.20	INITIAL				
1.21	INITIAL				
1.22	INITIAL				
1.23	INITIAL				
1.24	INITIAL				
1.25	INITIAL				
1.26	INITIAL				
1.27	INITIAL				
1.28	INITIAL				
1.29	INITIAL				
1.30	INITIAL				
1.31	INITIAL				
1.32	INITIAL				
1.33	INITIAL				
1.34	INITIAL				
1.35	INITIAL				
1.36	INITIAL				
1.37	INITIAL				
1.38	INITIAL				
1.39	INITIAL				
1.40	INITIAL				
1.41	INITIAL				
1.42	INITIAL				
1.43	INITIAL				
1.44	INITIAL				
1.45	INITIAL				
1.46	INITIAL				
1.47	INITIAL				
1.48	INITIAL				
1.49	INITIAL				
1.50	INITIAL				
1.51	INITIAL				
1.52	INITIAL				
1.53	INITIAL				
1.54	INITIAL				
1.55	INITIAL				
1.56	INITIAL				
1.57	INITIAL				
1.58	INITIAL				
1.59	INITIAL				
1.60	INITIAL				
1.61	INITIAL				
1.62	INITIAL				
1.63	INITIAL				
1.64	INITIAL				
1.65	INITIAL				
1.66	INITIAL				
1.67	INITIAL				
1.68	INITIAL				
1.69	INITIAL				
1.70	INITIAL				
1.71	INITIAL				
1.72	INITIAL				
1.73	INITIAL				
1.74	INITIAL				
1.75	INITIAL				
1.76	INITIAL				
1.77	INITIAL				
1.78	INITIAL				
1.79	INITIAL				
1.80	INITIAL				
1.81	INITIAL				
1.82	INITIAL				
1.83	INITIAL				
1.84	INITIAL				
1.85	INITIAL				
1.86	INITIAL				
1.87	INITIAL				
1.88	INITIAL				
1.89	INITIAL				
1.90	INITIAL				
1.91	INITIAL				
1.92	INITIAL				
1.93	INITIAL				
1.94	INITIAL				
1.95	INITIAL				
1.96	INITIAL				
1.97	INITIAL				
1.98	INITIAL				
1.99	INITIAL				
1.100	INITIAL				

AMP KOREA  
 Kyungson, Korea  
**AIR BAG 50P HEADER ASS'Y**  
 DRAWING NO: 00779  
 DATE: 2/1/07  
 REV: 2