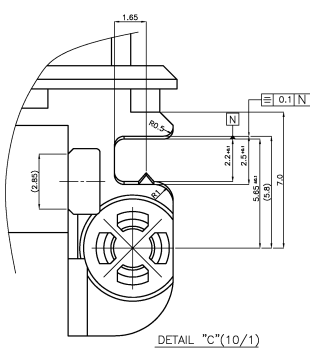
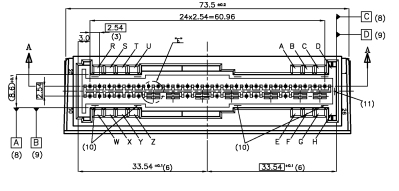


NOT DRAWING TO DIMENSIONS  
 REVISIONS PER THIS DRAWING  
 IF THIS ELECTRONIC COMPONENT HAS A REVERSE SIDE

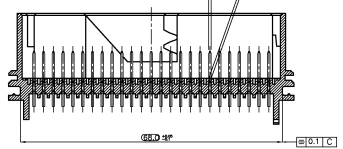
REVISED		DATE	BY	CHK	APP
S	REVISED (FC00-0039-02)	02/04/03	MS	CS	
T	REVISED (FC00-0002-03)	14/04/03	MS	CS	
U	REVISED (FC00-0072-03)	06/04/03	MS	CS	
V	REVISED (FC00-0008-04)	06/04/03	MS	CS	
W	REVISED (FC00-0048-04)	22/04/03	MS	CS	
Y	REVISED (EGR-06-028031)	14/01/07	BN	JK	



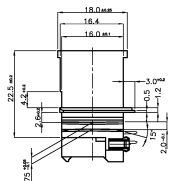
DETAIL "C"(10/1)



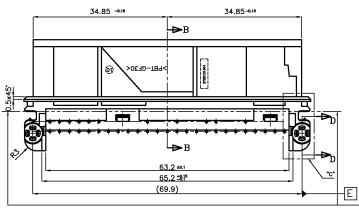
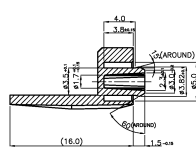
SECTION A-A



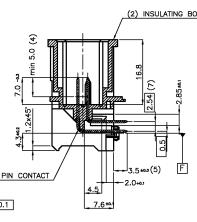
SECTION B-B



SECTION D-D(4/1)

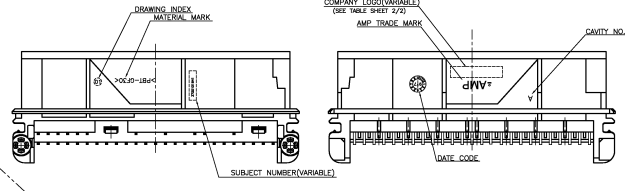


SECTION E-E



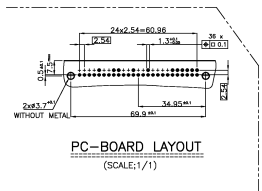
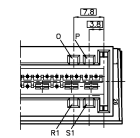
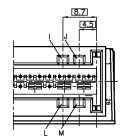
SECTION B-B

- NOTES**
- (1) PIN CONTACT : φ0.63  
 MATERIAL : Cu59P6
  - (2) FINISH : SEE TABLE SHEET 2/2.
  - (3) EXERCISE FORCE IN DIRECTION OF CONNECTION (DETECTION AS SEPARATE OPERATION)
    - >20N but <=20mm/min, AFTER SOLDERING STRESS
    - >40N but <=100mm/min
  - (4) ENVIRONMENTAL REQUIREMENTS ACCORDING TO AMP SPEC 108-61031
    - NO MOSHIR-EFFECT BY ASSEMBLY FORCE <= 50N
    - DRAWING KEY B (D-H)
    - FREE OF LOOSE METAL PARTS
    - PIN CONNECTOR : FREE OF CADMIUM (<= 50ppm)
  - (5) INSULATING BODY
    - (1) MATERIAL : PBT + GF30K
    - (2) COLOR : CONSULT THE DRAWING
    - (3) ALLOWED RECYCLED MATERIAL MAX 25%
  - (6) IN THE AREA OF MOSHIR FREE SPACE THERE IS UP TO +0.2 PERMISSIBLE
  - (7) MATING AREA
  - (8) SOLDERING AREA
  - (9) MEASURED TO THE CENTER LINE OF THE INSULATING BODY
  - (10) CONNECTIONS SUITABLE FOR HOLE DIAMETER 1.3, SEE PC-BOARD LAYOUT
  - (11) MEASURED AT THE BOTTOM
  - (12) MEASUREMENT POINTS FOR REFERENCE (A) AND (B)
  - (13) MEASUREMENT POINTS FOR REFERENCE (C) AND (D)
  - (14) MEASUREMENT POINTS FOR REFERENCE (E) AND (F)

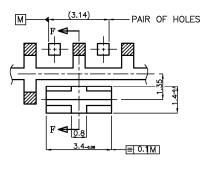


VIEW CODE "JULM"

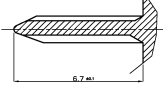
VIEW CODE "OPR1S1"



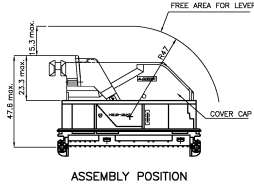
PC-BOARD LAYOUT (SCALE:1/1)



DETAIL "E"(10/1)



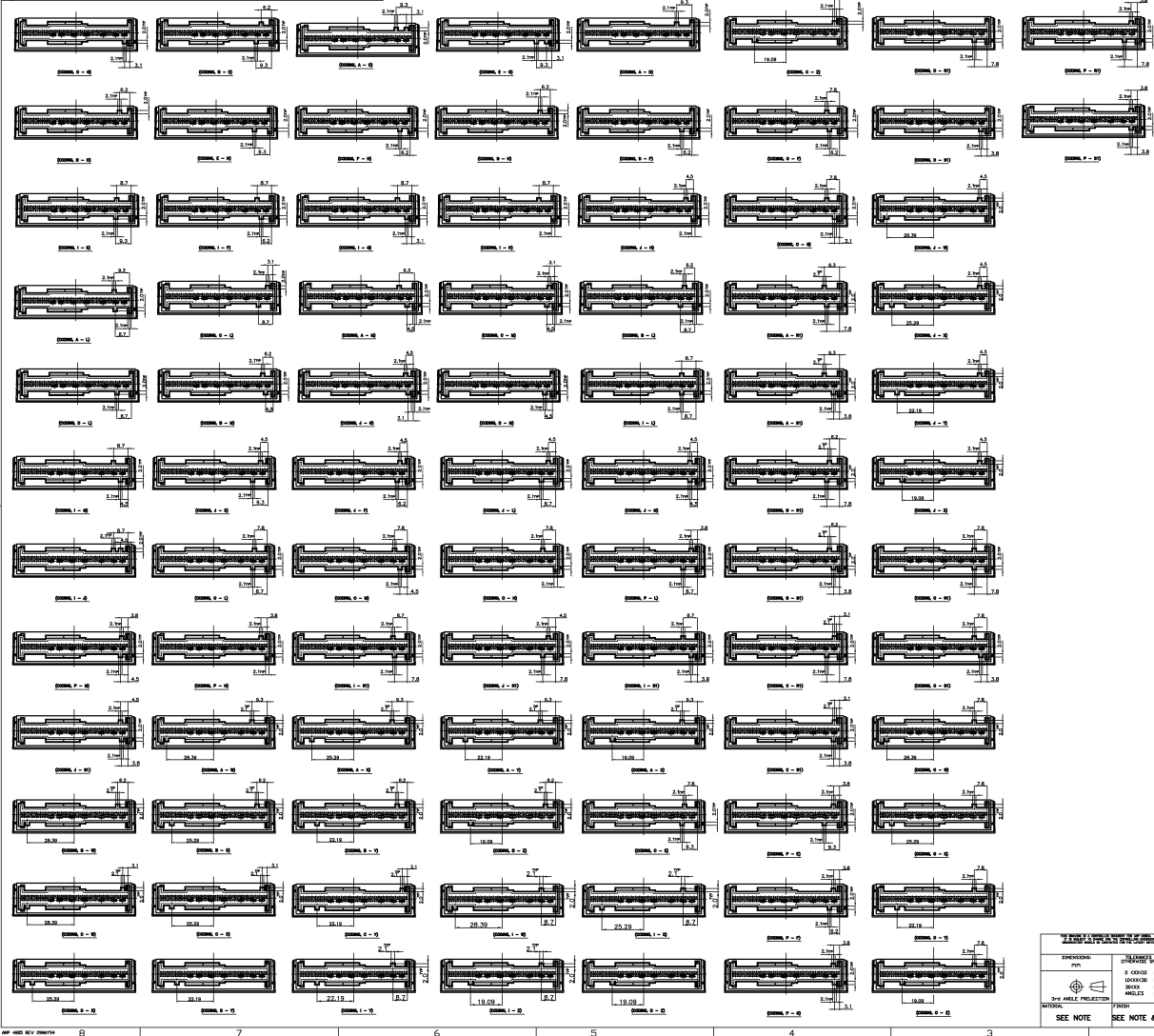
SECTION F-F(10/1)



ASSEMBLY POSITION

<b>WORLDWIDE ELECTRONIC PARTS DISTRIBUTOR</b> AMP KOREA Kyungson, Korea		AMP KOREA Kyungson, Korea
DRAWING NO.: 368213 PROJECT SPEC.: AIR BAG 50P HEADER ASSY APPLICATION SPEC.: REV: 2/1	DATE: 00779 DATE CODE: 368213 REVISION NO.: CUSTOMER DRAWING	SHEET: 2/1 TOTAL SHEETS: 2

KEY-CODE LAYOUT



REVISONS		DATE	BY	CHK	APP
1	INITIAL				

SEE 1 OF 2 SHEET

NO.	REVISION	DATE	BY	CHK	APP
1.1	INITIAL				
1.2	INITIAL				
1.3	INITIAL				
1.4	INITIAL				
1.5	INITIAL				
1.6	INITIAL				
1.7	INITIAL				
1.8	INITIAL				
1.9	INITIAL				
1.10	INITIAL				
1.11	INITIAL				
1.12	INITIAL				
1.13	INITIAL				
1.14	INITIAL				
1.15	INITIAL				
1.16	INITIAL				
1.17	INITIAL				
1.18	INITIAL				
1.19	INITIAL				
1.20	INITIAL				
1.21	INITIAL				
1.22	INITIAL				
1.23	INITIAL				
1.24	INITIAL				
1.25	INITIAL				
1.26	INITIAL				
1.27	INITIAL				
1.28	INITIAL				
1.29	INITIAL				
1.30	INITIAL				
1.31	INITIAL				
1.32	INITIAL				
1.33	INITIAL				
1.34	INITIAL				
1.35	INITIAL				
1.36	INITIAL				
1.37	INITIAL				
1.38	INITIAL				
1.39	INITIAL				
1.40	INITIAL				
1.41	INITIAL				
1.42	INITIAL				
1.43	INITIAL				
1.44	INITIAL				
1.45	INITIAL				
1.46	INITIAL				
1.47	INITIAL				
1.48	INITIAL				
1.49	INITIAL				
1.50	INITIAL				
1.51	INITIAL				
1.52	INITIAL				
1.53	INITIAL				
1.54	INITIAL				
1.55	INITIAL				
1.56	INITIAL				
1.57	INITIAL				
1.58	INITIAL				
1.59	INITIAL				
1.60	INITIAL				
1.61	INITIAL				
1.62	INITIAL				
1.63	INITIAL				
1.64	INITIAL				
1.65	INITIAL				
1.66	INITIAL				
1.67	INITIAL				
1.68	INITIAL				
1.69	INITIAL				
1.70	INITIAL				
1.71	INITIAL				
1.72	INITIAL				
1.73	INITIAL				
1.74	INITIAL				
1.75	INITIAL				
1.76	INITIAL				
1.77	INITIAL				
1.78	INITIAL				
1.79	INITIAL				
1.80	INITIAL				
1.81	INITIAL				
1.82	INITIAL				
1.83	INITIAL				
1.84	INITIAL				
1.85	INITIAL				
1.86	INITIAL				
1.87	INITIAL				
1.88	INITIAL				
1.89	INITIAL				
1.90	INITIAL				
1.91	INITIAL				
1.92	INITIAL				
1.93	INITIAL				
1.94	INITIAL				
1.95	INITIAL				
1.96	INITIAL				
1.97	INITIAL				
1.98	INITIAL				
1.99	INITIAL				
1.100	INITIAL				

AMP KOREA  
 Kyungson, Korea  
**AIR BAG 50P HEADER ASS'Y**  
 DRAWING NO. 100779  
 DATE 2/1/07  
 REV. 2

PREPARED BY: P.M.  
 CHECKED BY: S.B.  
 DRAWN BY: S.B.  
 APPROVED BY: S.B.

SEE NOTE  
 SEE NOTE & TABLE  
 CUSTOMER DRAWING