

4

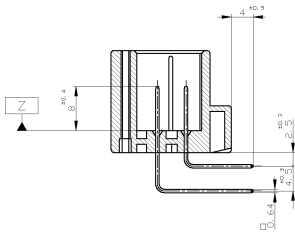
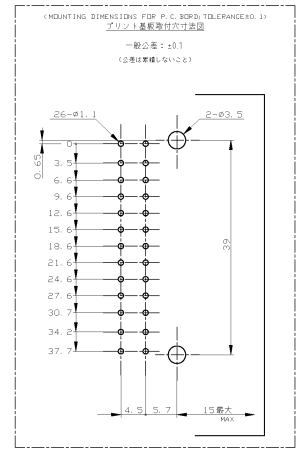
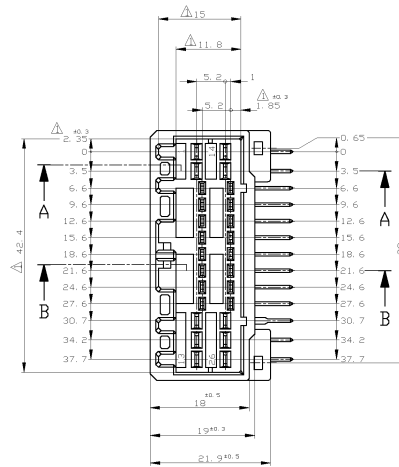
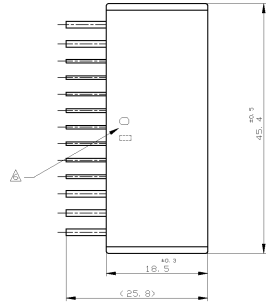
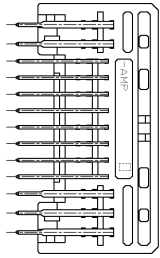
3

2

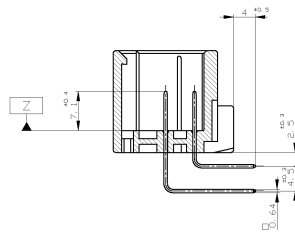
1

THIS DRAWING IS UNCLASSIFIED
 (C) COPYRIGHT © BY ALL RIGHTS RESERVED
 RELEASED FOR INFORMATION

REV.	DATE	BY	APP.	DESCRIPTION
J				
F4				REVISED



断面 A-A
(SECT. A-A)



断面 B-B
(SECT. B-B)

- △ MUST BE KEPT BETWEEN [Z-2] AND 2
- 2. THE MATING PLUG HSG PART NUMBER: 174516, 917992
- 3. RECOMMENDED MOUNTING SCREW: 3mm DIA, 6mm LENGTH (MAX)
FAN HEAD, CLASS 2 TAPPING SCREW SPECIFIED IN JIS B1115, B1122
(TIGHTENING TORQUE: 0.4N-m (4kg-cm) MAX)
- 4. APPLICABLE PRODUCT SPEC NO.: 108-5280, 108-5342
- △ CIRCUT NUMBER
POWER CIRCUIT NO. ① ~ ⑩
SIGNAL CIRCUIT NO. ⑪ ~ ⑳
- △ INDICATED PREFIX AND ID MARK OF PRODUCT P/N BY HOT MARK

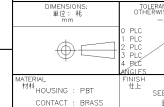
- △ [Z-2] 面から2mmの範囲で測定
- 2. 嵌合相手ハジング型: 174516, 917992
- 3. 推奨増付ねじ: JIS B1115, B1122 カップネジねじ, なへ2種
呼び径3, 長さ6mm以下 (締め付けトルク: 0.4N-m (4kg-cm) 以下)
- 4. 適用製品規格番号: 108-5280, 108-5342
- △ 回路番号: 上回参照のこと
パワー回路 ① ~ ⑩
シグナル回路 ⑪ ~ ⑳
- △ 適用製品型番のアフィックス及び印マークを
カマネットマークにて表示

MARKING	SOLDERING SIDE	FINISH OF CONTACT	CONTACT SIDE	POWER CIRCUIT NO.	SIGNAL CIRCUIT NO.	HOUSING COLOR	PART NO.
4	TIN-LEAD	SELECTIVE GOLD (鍍金めっき) × 2	PRE-TINNED (鍍めめっき) × 2	---	---	GRAY 灰色	4-178811-6
4	TIN-LEAD	SELECTIVE GOLD (鍍金めっき) × 2	PRE-TINNED (鍍めめっき) × 2	---	---	NATURAL 自然色	4-178811-1
3	TIN-LEAD	SELECTIVE GOLD (鍍金めっき) × 6	PRE-TINNED (鍍めめっき) × 6	---	---	BLACK 黒色	3-178811-2
2	TIN-LEAD	SELECTIVE GOLD (鍍金めっき) × 6	PRE-TINNED (鍍めめっき) × 6	---	---	GRAY 灰色	2-178811-6
0	PRE-TINNED	真メッキ × 2	---	---	---	YELLOW 黄色	178811-7
0	PRE-TINNED	真メッキ × 2	---	---	---	GRAY 灰色	178811-6
5	SELECTIVE-TIN (ハット)	選択めっき × 4	SELECTIVE GOLD (鍍金めっき) × 1 × 2	① ~ ⑩	⑪ ~ ⑳	GRAY 灰色	178811-3
1	SELECTIVE-TIN (ハット)	選択めっき × 4	SELECTIVE-TIN (ハット) × 1 × 2	---	---	WHITE 白色	178811-2
0	PRE-TINNED	真メッキ × 2	---	---	---	WHITE 白色	178811-1

GENERAL TOLERANCE

OK * 1.0 ± 0.2
 100 * 1.30 ± 0.25
 300 * 1.00 ± 0.3

ANGLES ± 3°



THIS DRAWING IS A CONTROLLED DOCUMENT

DATE: 17MAV05
 CHK: SHINOHARA
 DWG: K. B. TSUJII
 PRODUCT SPEC: 製品仕様
 APPLICATION SPEC: 取付取付書

TE Connectivity
 26Pos CAP HOUSING ASSY
 040/070 HYBRID I/O CONNECTOR

SEE: 00779
 QDC CODE: 178811
 SHRING NO: 178811

RESTRICTED TO: ---
 SCALE: 2:1
 SHEET: 1 of 1
 REV: F4