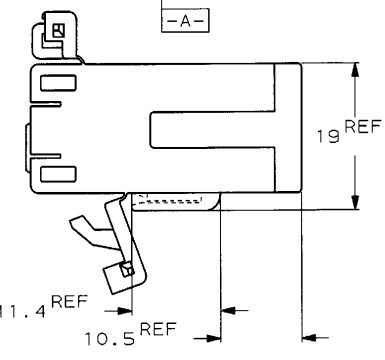
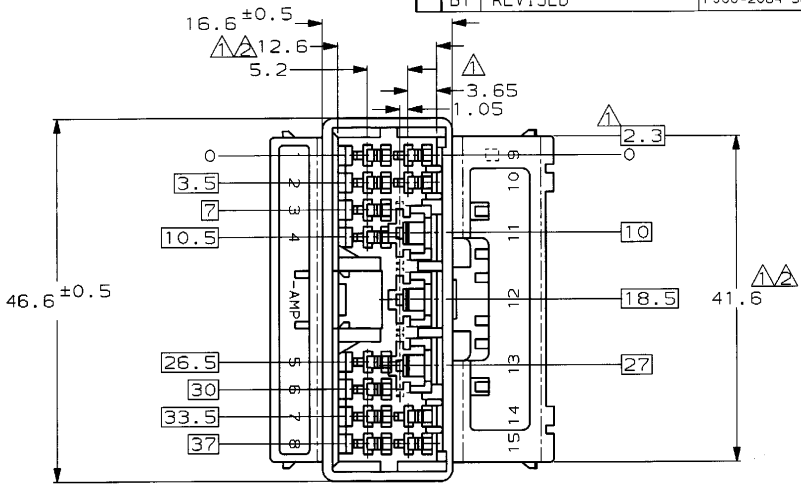
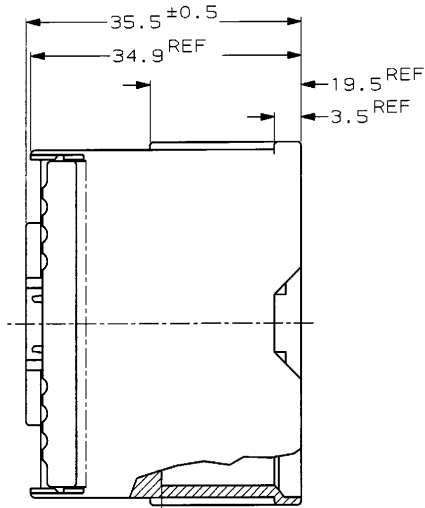


D:\auto2\new\j-u_cdb-0116\j-u_customer\j-u-174942

THIS DRAWING IS UNPUBLISHED. RELEASED FOR PUBLICATION BY AMP INCORPORATED. ALL RIGHTS RESERVED. J

REVISIONS						
P	LYR	DESCRIPTION	ECN	DATE	DWN	APVD
B		REDRAWN W/CHANGE	FJ00-1454-98	26AUG98	AY	KB
B1		REVISED	FJ00-2064-98	29OCT98	AY	KB



- ▲ MUST BE KEPT BETWEEN -A- AND 2.
- ▲ TO BE MATED WITH THE PLUG HOUSING SMOOTHLY.
- 3 APPLIED TAB CONTACT PARTS NUMBER; 173633, 170340 etc.
- 4 PLUG HOUSING PARTS NUMBER; 174927 etc.
- ▲ -A- 面より 2mmの範囲で測定。
- ▲ 相手ハウジングと所定の機能を満足して嵌合できること。
- 3 内装するタブコンタクト型番; 070シリーズ 173633, 173645, 250シリーズ 170340, 170341, 170349
- 4 嵌合相手ハウジング型番 174927

BLUE	—//—	174942-5
WHITE	15 Pos Cap Housing	174942-1
COLOR 色	NAME 名称	PARTS NUMBER 型番

<small>THIS DRAWING IS A CONTROLLED DOCUMENT FOR AMP INCORPORATED. IT IS SUBJECT TO CHANGE AND THE CONTROLLING ENGINEERING ORGANIZATION SHOULD BE CONTACTED FOR THE LATEST REVISION.</small>		DWN A. YAMAGUCHI 19AUG98 CHK K. BETSU 26AUG98 APVD K. BETSU 26AUG98	WIRE RANGE 総合電線断面積 T1	INSULATION DIA 被覆外径 T1
DIMENSIONS 単位: 概 mm		TOLERANCES UNLESS OTHERWISE SPECIFIED 一般公差 10% : ±0.2 30% : ±0.25 50% : ±0.3 100% : ±0.3 ANGLE : ±3°	AMP Kawasaki, Japan	
MATERIAL PBT		FINISH ZFN	NAME 品名 .070 SRS MLC 15POS CAP HSG(W-W) 070 シリーズ マルチロックコネクタ ハイブリッドタイプ 15極 キャップハウジング	
PRODUCT SPEC 108-5624		APPLICATION SPEC 取付適用規格 T1	SIZE (CASE CODE) DRAWING NO A3 00779 C= 174942	RESTRICTED TO -
NET WT 13.5g CUSTOMER DRAWING			SCALE 2:1 SHEET 1 OF 1 REV. B1	参考図面

AMP1470-19 REV 10/93 fj024691