

4

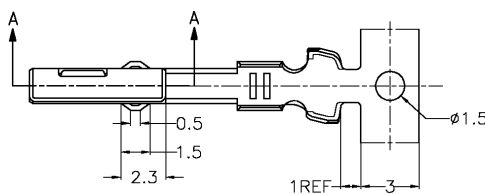
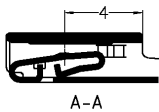
3

2

1

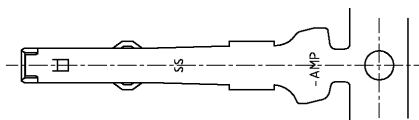
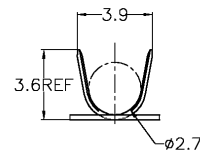
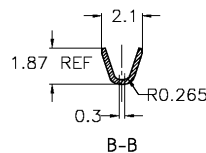
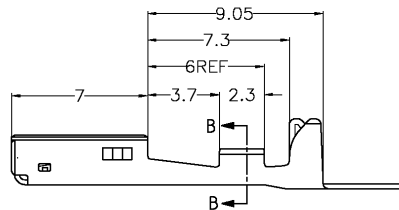
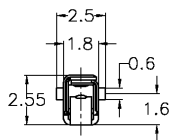
THIS DRAWING IS UNPUBLISHED. RELEASED FOR PUBLICATION  
 © COPYRIGHT - BY TYCO ELECTRONICS CORPORATION. ALL RIGHTS RESERVED.

LOC	TRIST	P	LTR	DESCRIPTION	DATE	DWN	APVD
J				RELEASED FJA0-0417-03	07JUL2003	Y.K	K.A



1適用電線; CPEXBSO 0.22mm<sup>2</sup>  
 AVSS,CAVS 0.3-0.5mm<sup>2</sup>

1.APPLICABLE WIRE RANGE; CPEXBSO 0.22mm<sup>2</sup>  
 AVSS,CAVS 0.3-0.5mm<sup>2</sup>



PRE-TIN	1674768-1
FINISH	PART NUMBER
Tyco Electronics AMP K.K. Kawasaki, Japan	
NAME 名称 .040 III SEALED CONTACT, RECEPTACLE (SS) Sn	
SIZE A3	CAGE CODE 00779
DRAWING NO 1674768	RESTRICTED
CUSTOMER DRAWING	
SCALE 尺度 5:1	SHEET 1 OF 1
REV 0	

THIS DRAWING IS A CONTROLLED DOCUMENT.		DWN Y.KAWAHARA 07JUL2003
DIMENSIONS: 單位: 轉 MM		CHK H.YAMAGAMI 07JUL2003
TOLERANCES UNLESS OTHERWISE SPECIFIED: 一般公差 ±0.3		APVD K.SASAI 07JUL2003
0-PLC ± 1-PLC ± 2-PLC ± 3-PLC ± 4-PLC ± ANGLES ±3°	FINISH 仕上 SEE TABLE	PRODUCT SPEC 製品規格 APPLICATION SPEC 適用規格 14-5227
MATERIAL 材料 COPPER ALLOY	WEIGHT 0.3 g	

AMP 1470-19 REV 31MAR2000

12FEB2003 5:43pm FJ042615

L:\en32\_automotive\w.a99-0511\customer\auto\_cad\c-1674768.dwg