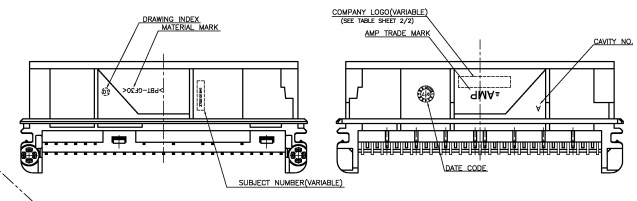
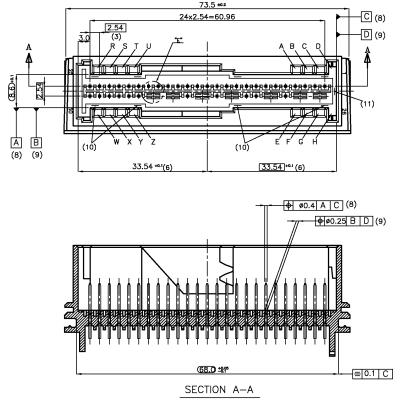
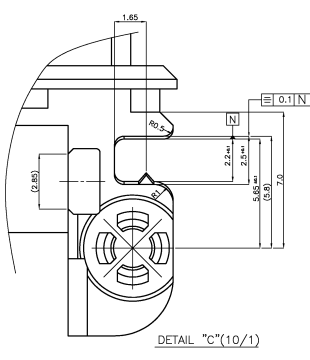
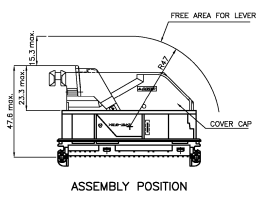
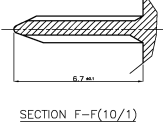
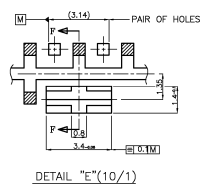
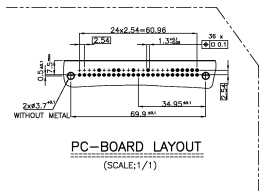
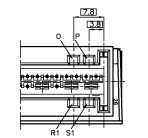
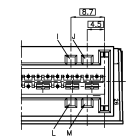
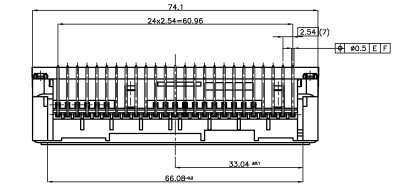
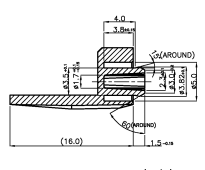
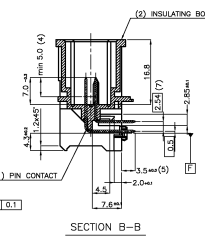
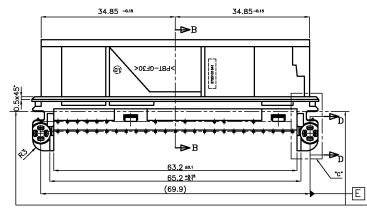
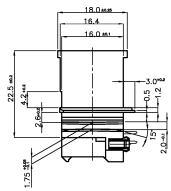


NOT BEING TO OPERATE. RECESS FOR POSITION.  
 IF THIS ELECTRICAL COMPONENT IS NOT REVERSE

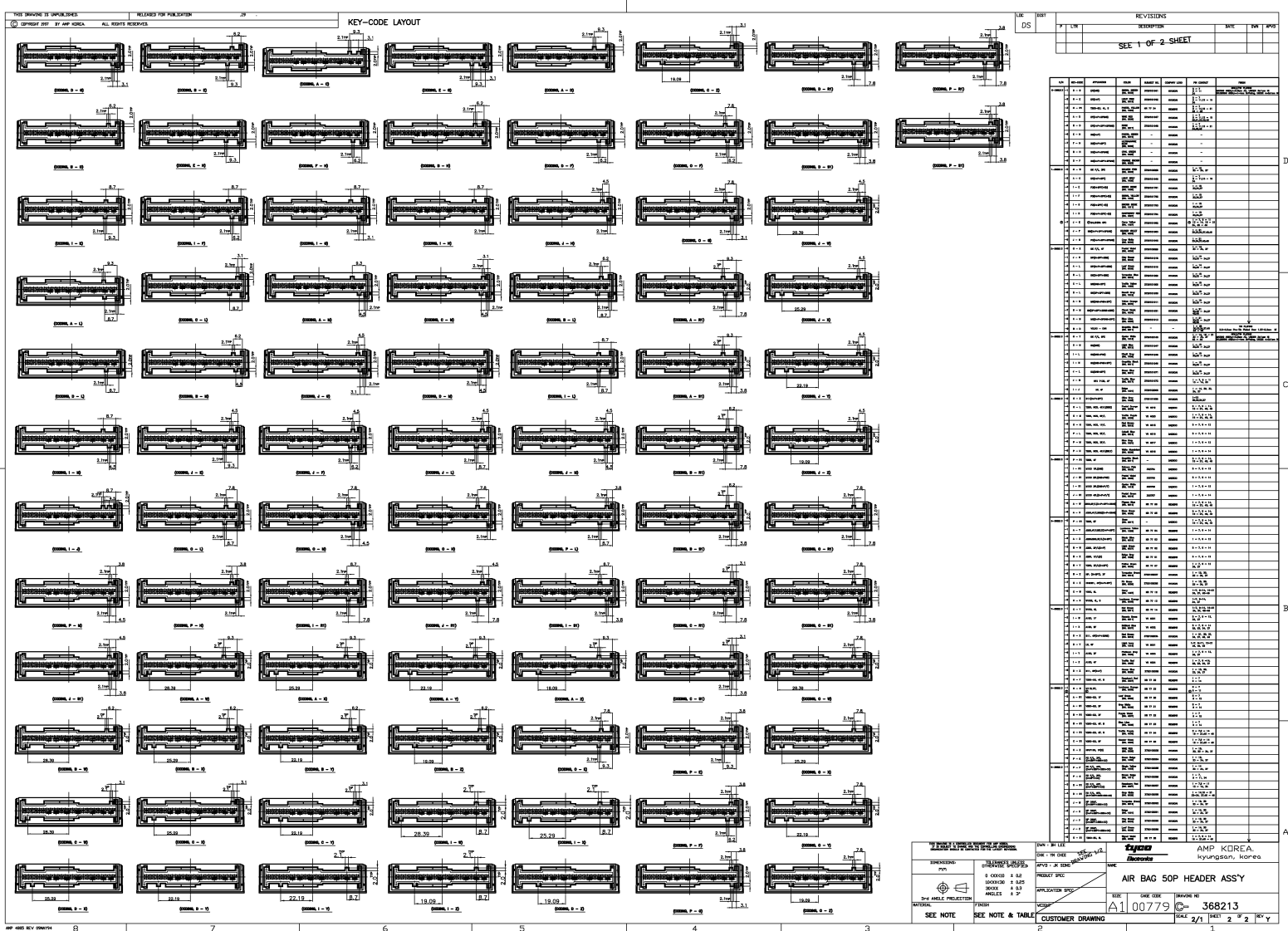
REV	DATE	REVISIONS	BY	CHK	APP
S		REVISED (FC00-0039-02)	SH/AN	YH	CS
T		REVISED (FC00-0002-03)	SH/AN	YH	CS
U		REVISED (FC00-0072-03)	SH/AN	YH	CS
V		REVISED (FC00-0008-04)	SH/AN	YH	CS
W		REVISED (FC00-0048-04)	SH/AN	YH	CS
Y		REVISED (EGR-06-028031)	HA/PM/SH	BH	JK



- NOTES
- PIN CONTACT :  $\pm 0.03$
  - MATERIAL : Cu96
  - FINISH : SEE TABLE SHEET 2/2.
  - SLECTING FORCE IN DIRECTION OF CONNECTION (DETECTION AS SEPARATE OPERATION)
    - >20N but  $\leq 200\text{mm/min}$ , AFTER SOLDERING STRESS
    - >40N but  $\leq 100\text{mm/min}$
  - ENVIRONMENTAL REQUIREMENTS ACCORDING TO AMP SPEC 108-61031
    - NO MOSHIR-EFFECT BY ASSEMBLY FORCE  $\leq 50\text{N}$
    - DRAWING KEY B (D-H)
    - FREE OF LOOSE METAL PARTS
    - PIN CONNECTOR : FREE OF CADMIUM ( $\leq 50\text{ppm}$ )
  - INSULATING BODY
    - MATERIAL : PBT + GF30K
    - COLOR : CONSULT THE DRAWING
    - ALLOWED RECYCLED MATERIAL MAX 25%
  - IN THE AREA OF MOSHIR FREE SPACE THERE IS UP TO  $\pm 0.2$  PERMISSIBLE
  - SOLDERING AREA
  - MEASURED TO THE CENTER LINE OF THE INSULATING BODY
  - CONNECTIONS SUITABLE FOR HOLE DIAMETER 1.3, SEE PC-BOARD LAYOUT
  - MEASURED AT PIN TOP(7MM ABOVE BOTTOM)
  - MEASURED AT THE BOTTOM
  - MEASUREMENT POINTS FOR REFERENCE (A) AND (B)
  - MEASUREMENT POINTS FOR REFERENCE (C) AND (D)



W.P. 100% DIMENSIONS: mm UNLESS SPECIFIED OTHERWISE DECIMAL FRACTIONS: 0.0000, 0.0005, 0.0010, 0.0015, 0.0020, 0.0025, 0.0030, 0.0035, 0.0040, 0.0045, 0.0050, 0.0055, 0.0060, 0.0065, 0.0070, 0.0075, 0.0080, 0.0085, 0.0090, 0.0095, 0.0100 ANGLES: 0°, 15°, 30°, 45°, 60°, 75°, 90°, 105°, 120°, 135°, 150°, 165°, 180°	DATE: 00779 CUSTOMER DRAWING: 368213 SCALE: 2/1 SHEET: 1 of 2 REV: Y	AMP KOREA Kyungson, Korea <b>AIR BAG 50P HEADER ASSY</b> 00779 368213
--	--	---



REVISEMENTS		DATE	BY	CHK	APPV
1	INITIAL				
SEE 1 OF 2 SHEET					

NO.	DESCRIPTION	DATE	BY	CHK	APPV
1	INITIAL				
2	INITIAL				
3	INITIAL				
4	INITIAL				
5	INITIAL				
6	INITIAL				
7	INITIAL				
8	INITIAL				
9	INITIAL				
10	INITIAL				
11	INITIAL				
12	INITIAL				
13	INITIAL				
14	INITIAL				
15	INITIAL				
16	INITIAL				
17	INITIAL				
18	INITIAL				
19	INITIAL				
20	INITIAL				
21	INITIAL				
22	INITIAL				
23	INITIAL				
24	INITIAL				
25	INITIAL				
26	INITIAL				
27	INITIAL				
28	INITIAL				
29	INITIAL				
30	INITIAL				
31	INITIAL				
32	INITIAL				
33	INITIAL				
34	INITIAL				
35	INITIAL				
36	INITIAL				
37	INITIAL				
38	INITIAL				
39	INITIAL				
40	INITIAL				
41	INITIAL				
42	INITIAL				
43	INITIAL				
44	INITIAL				
45	INITIAL				
46	INITIAL				
47	INITIAL				
48	INITIAL				
49	INITIAL				
50	INITIAL				
51	INITIAL				
52	INITIAL				
53	INITIAL				
54	INITIAL				
55	INITIAL				
56	INITIAL				
57	INITIAL				
58	INITIAL				
59	INITIAL				
60	INITIAL				
61	INITIAL				
62	INITIAL				
63	INITIAL				
64	INITIAL				
65	INITIAL				
66	INITIAL				
67	INITIAL				
68	INITIAL				
69	INITIAL				
70	INITIAL				
71	INITIAL				
72	INITIAL				
73	INITIAL				
74	INITIAL				
75	INITIAL				
76	INITIAL				
77	INITIAL				
78	INITIAL				
79	INITIAL				
80	INITIAL				
81	INITIAL				
82	INITIAL				
83	INITIAL				
84	INITIAL				
85	INITIAL				
86	INITIAL				
87	INITIAL				
88	INITIAL				
89	INITIAL				
90	INITIAL				
91	INITIAL				
92	INITIAL				
93	INITIAL				
94	INITIAL				
95	INITIAL				
96	INITIAL				
97	INITIAL				
98	INITIAL				
99	INITIAL				
100	INITIAL				
101	INITIAL				
102	INITIAL				
103	INITIAL				
104	INITIAL				
105	INITIAL				
106	INITIAL				
107	INITIAL				
108	INITIAL				
109	INITIAL				
110	INITIAL				
111	INITIAL				
112	INITIAL				
113	INITIAL				
114	INITIAL				
115	INITIAL				
116	INITIAL				
117	INITIAL				
118	INITIAL				
119	INITIAL				
120	INITIAL				

AMP KOREA  
 Kyungson, Korea  
**AIR BAG 50P HEADER ASS'Y**  
 DRAWING NO: 00779  
 DATE: 2/1/07  
 REV: 2

PREPARED BY: P.M.  
 CHECKED BY: S.B.  
 DRAWN BY: S.B.  
 INKED BY: S.B.  
 APPROVED BY: S.B.

SEE NOTE  
 SEE NOTE & TABLE  
 CUSTOMER DRAWING