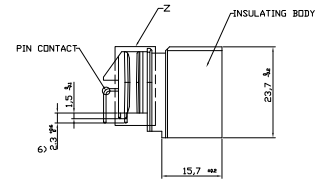
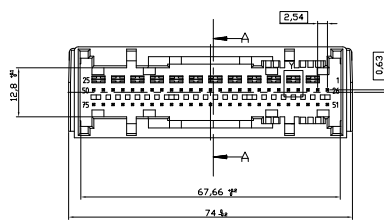
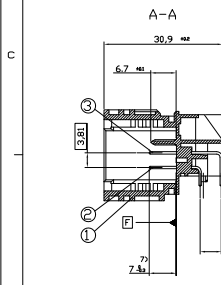
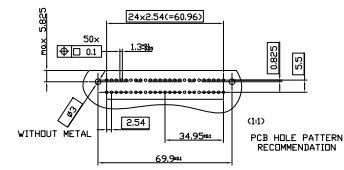
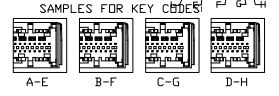
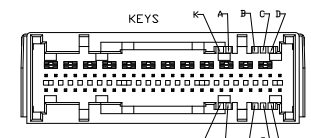
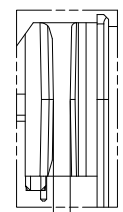
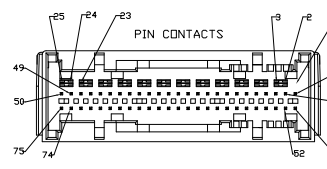
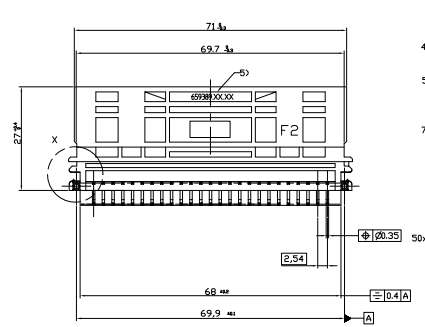
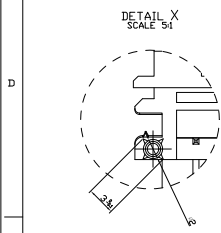


NOT DIMENSION TO DIMENSIONS RELEASED FOR FABRICATOR  
 © COPYRIGHT BY THE CUSTOMER ORIGINATOR OF THESE DRAWINGS

| REVISONS |                         | DATE       | BY | CHK | APPV |
|----------|-------------------------|------------|----|-----|------|
| A        | RELEASED                | 08.10.2010 | YS | JK  |      |
| AI       | REVISED (ECR-05-018387) | 15.02.2011 | YS | JK  |      |
| B        | REVISED (ECR-07-011548) | 04.02.2011 | SW | JK  |      |
| C        | REVISED (ECR-09-003995) | 04.06.2011 | YH | HG  |      |
| D        | REVISED (ECR-09-005643) | 03.06.2011 | YH | HG  |      |

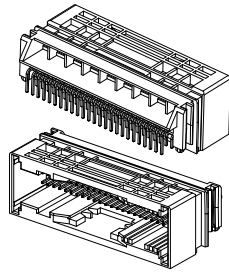
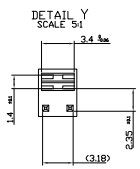
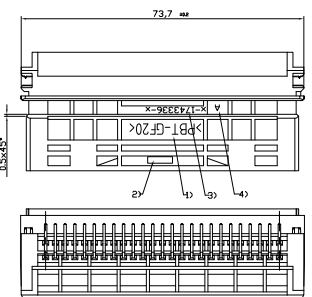
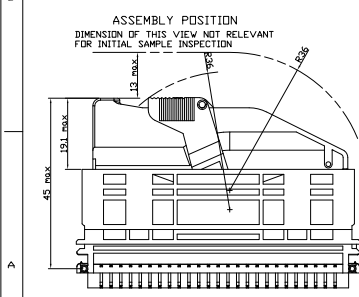


MATERIAL  
 INSULATING BODY  
 PBT GF 50  
 RECYCLE MATERIAL MAX 25%  
 COLOR: SEE TABLE

- PIN CONTACT: 061 Q  
 100% OF 100%
- FINISH:  
 PLATING AREA: 1.80μm Au OVER 120μm Ni  
 SOLDERING AREA: 2.1μm Sn OVER 120μm Ni Ni
- PUSH-OUT FORCE IN DIRECTION OF CONNECTION:  
 >25 N WITH 0.15 mm MINIMUM AFTER SOLDERING  
 STEADY LOAD OF 0.5 N  
 SA AT ONE PIN, WHEN AT ALL OTHER PINS 1A FLOWS  
 INITIAL RESISTANCE: <math>0.2 \Omega</math> WORK

- 130 DATE CODE INSULATING BODY  
 132 TOLERANCE: VALID UP TO 7MM OVER BOTTOM OTHERWISE -0.1, +0.2  
 133 MEASUREMENT POINTS FOR REFERENCES D AND E  
 134 MEASUREMENT AT BOTTOM POINT F3  
 135 MEASUREMENT AT PIN TOP 17 MM ABOVE BOTTOM  
 136 MEASUREMENT POINTS FOR REFERENCES B AND C  
 137 MATING AREA MIN. 5L  
 138 SOLDERING AREA UP TO BENDING EDGE 0MM  
 139 PART NO. SIEMENS AT  
 140 CAVITY SYMBOL  
 141 PART NO. FOR ASSY  
 142 MANUFACTURER LOGO SCRIPT HEIGHT 1.5 MM  
 143 MATERIAL SYMBOL

- ALL KEYS POSSIBLE WITH INSERTS  
 -NO KEYS WITH ENGAGEMENT FORCE >50 N  
 -CABLE OUTLET LEFT AND RIGHT  
 -NO FREE METAL PARTS PRESENT  
 -CONNECTOR FREE OF CADMIUM <math>-50ppm</math>  
 -STABILITY OF THE CONNECTOR SYSTEM  
 -TENSILE FORCE OF THE WIRING HARNESS AND  
 -10N PRESSURE FORCE OF THE FEMALE CONNECTOR  
 IN EACH DIRECTIONS



| DRAWING INFORMATION |            | CUSTOMER INFORMATION |                                     | MANUFACTURER INFORMATION |                 |
|---------------------|------------|----------------------|-------------------------------------|--------------------------|-----------------|
| DATE                | 08.10.2010 | CUSTOMER             | AMP KOREA, Kyungson, Korea          | MANUFACTURER             | AMP Electronics |
| REV                 | 1          | PROJECT NO.          | AIR BAG 7SP HEADER ASSEMBLY (FA-II) | PROJECT MGR.             |                 |
| BY                  | YS         | APPROVAL DATE        | 08.10.2010                          | DESIGNER                 |                 |
| CHK                 | JK         | DATE                 | 08.10.2010                          | APPV                     |                 |
| APPV                |            | HEIGHT               | 100779                              | REVISION                 |                 |
|                     |            | CUSTOMER DRAWING     | FORM 2/1                            | REV                      | 1               |

NOT SHOWN TO DIMENSIONS  
 ALLIGY FOR PURCHASE  
 BY THE CUSTOMER OPERATING UNDER PERMISS

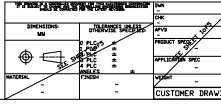
| REVISONS |                | DATE | BY | APPV |
|----------|----------------|------|----|------|
| NO.      | DESCRIPTION    |      |    |      |
| 1        | SEE SHEET 1025 |      |    |      |

KEYS  
 K, A, B, C, D, E, F, G, H, I, J, K, L



|  |  |                                     |  |
|--|--|-------------------------------------|--|
|  |  | <b>AMP KOREA</b><br>Kyungsan, Korea |  |
| AIR BAG 75P HEADER ASSEMBLY(A-II)        |  | PART NO. 00779                      |  |
| DATE FOR THE ISSUE OF THIS DRAWING: 2/71 |  | REFERENCE TO: 1742336               |  |
| CUSTOMER DRAWING                         |  | SHEET 2/1 (REV) 2 OF 5 REV D        |  |

| CROSS-SECTIONAL VIEW OF CONTACT PIN/CONTACT PIN/SHEET |     | FINISH COLOR |    | PIN CONTACTS |     |
|---|-----|--------------|----|--------------|-----|
| NO  | REV | DATE         | BY | APPR         | REV |
| 1   |     |              |    |              |     |
| 2   |     |              |    |              |     |
| 3   |     |              |    |              |     |
| 4   |     |              |    |              |     |
| 5   |     |              |    |              |     |
| 6   |     |              |    |              |     |
| 7   |     |              |    |              |     |
| 8   |     |              |    |              |     |
| 9   |     |              |    |              |     |
| 10  |     |              |    |              |     |
| 11  |     |              |    |              |     |
| 12  |     |              |    |              |     |
| 13  |     |              |    |              |     |
| 14  |     |              |    |              |     |
| 15  |     |              |    |              |     |
| 16  |     |              |    |              |     |
| 17  |     |              |    |              |     |
| 18  |     |              |    |              |     |
| 19  |     |              |    |              |     |
| 20  |     |              |    |              |     |
| 21  |     |              |    |              |     |
| 22  |     |              |    |              |     |
| 23  |     |              |    |              |     |
| 24  |     |              |    |              |     |
| 25  |     |              |    |              |     |
| 26  |     |              |    |              |     |
| 27  |     |              |    |              |     |
| 28  |     |              |    |              |     |
| 29  |     |              |    |              |     |
| 30  |     |              |    |              |     |
| 31  |     |              |    |              |     |
| 32  |     |              |    |              |     |
| 33  |     |              |    |              |     |
| 34  |     |              |    |              |     |
| 35  |     |              |    |              |     |
| 36  |     |              |    |              |     |
| 37  |     |              |    |              |     |
| 38  |     |              |    |              |     |
| 39  |     |              |    |              |     |
| 40  |     |              |    |              |     |
| 41  |     |              |    |              |     |
| 42  |     |              |    |              |     |
| 43  |     |              |    |              |     |
| 44  |     |              |    |              |     |
| 45  |     |              |    |              |     |
| 46  |     |              |    |              |     |
| 47  |     |              |    |              |     |
| 48  |     |              |    |              |     |
| 49  |     |              |    |              |     |
| 50  |     |              |    |              |     |
| 51  |     |              |    |              |     |
| 52  |     |              |    |              |     |
| 53  |     |              |    |              |     |
| 54  |     |              |    |              |     |
| 55  |     |              |    |              |     |
| 56  |     |              |    |              |     |
| 57  |     |              |    |              |     |
| 58  |     |              |    |              |     |
| 59  |     |              |    |              |     |
| 60  |     |              |    |              |     |
| 61  |     |              |    |              |     |
| 62  |     |              |    |              |     |
| 63  |     |              |    |              |     |
| 64  |     |              |    |              |     |
| 65  |     |              |    |              |     |
| 66  |     |              |    |              |     |
| 67  |     |              |    |              |     |
| 68  |     |              |    |              |     |
| 69  |     |              |    |              |     |
| 70  |     |              |    |              |     |
| 71  |     |              |    |              |     |
| 72  |     |              |    |              |     |
| 73  |     |              |    |              |     |
| 74  |     |              |    |              |     |
| 75  |     |              |    |              |     |
| 76  |     |              |    |              |     |
| 77  |     |              |    |              |     |
| 78  |     |              |    |              |     |
| 79  |     |              |    |              |     |
| 80  |     |              |    |              |     |
| 81  |     |              |    |              |     |
| 82  |     |              |    |              |     |
| 83  |     |              |    |              |     |
| 84  |     |              |    |              |     |
| 85  |     |              |    |              |     |
| 86  |     |              |    |              |     |
| 87  |     |              |    |              |     |
| 88  |     |              |    |              |     |
| 89  |     |              |    |              |     |
| 90  |     |              |    |              |     |
| 91  |     |              |    |              |     |
| 92  |     |              |    |              |     |
| 93  |     |              |    |              |     |
| 94  |     |              |    |              |     |
| 95  |     |              |    |              |     |
| 96  |     |              |    |              |     |
| 97  |     |              |    |              |     |
| 98  |     |              |    |              |     |
| 99  |     |              |    |              |     |
| 100   |     |              |    |              |     |



AMP KOREA, Kyungsoon, Korea  
AIR BAG 75P HEAD ASSEMBLY (FA-112)  
DATE: 07/20/04  
REV: 04  
CUSTOMER DRAWING



## BARCODE OVERVIEW

| CONNECTOR, ECU SIDE |             |          |           |
|---------------------|-------------|----------|-----------|
| SIEMENS P/NO.       | TE P/NO.    | KEY CODE | MLFB      |
| KR 9301.78.19       | 1-1743336-1 | C-H      | 5WY6 7001 |
| KR 9301.78.21       | 1-1743336-2 | D-G      | 5WY6 7003 |
| KR 9301.78.23       | 1-1743336-3 | B-E      | 5WY6 7005 |
| KR 9301.78.25       | 1-1743336-4 | B-D      | 5WY6 7007 |
| KR 9301.78.26       | 1-1743336-5 | F-H      | 5WY6 7008 |
| KR 9301.78.27       | 1-1743336-6 | A-D      | 5WY6 7009 |
| KR 9301.78.28       | 1-1743336-7 | B-C      | 5WY6 7010 |
| KR 9301.78.29       | 1-1743336-8 | A-L      | 5WY6 7011 |
| KR 9301.78.30       | 1-1743336-9 | C-L      | 5WY6 7012 |
| KR 9301.78.4.9      | 2-1743336-1 | E-K      | 5WY6 7031 |
| KR 9301.78.50       | 2-1743336-2 | E-H      | 5WY6 7032 |
| KR 9301.78.51       | 2-1743336-3 | D-K      | 5WY6 7033 |
| KR 9301.78.52       | 2-1743336-4 | H-L      | 5WY6 7034 |
| KR 9301.78.53       | 2-1743336-5 | F-L      | 5WY6 7035 |
| KR 9301.78.54       | 2-1743336-6 | A-K      | 5WY6 7036 |
| KR 9301.78.55       | 2-1743336-7 | D-H      | 5WY6 7037 |
| KR 9301.78.56       | 2-1743336-8 | C-G      | 5WY6 7038 |
| KR 9301.78.57       | 2-1743336-9 | B-F      | 5WY6 7039 |
| KR 9301.78.58       | 3-1743336-1 | A-E      | 5WY6 7040 |
| KR 9301.78.59       | 5-1743336-5 | E-L      | 5WY6 7051 |
| KR 9301.78.60       | 5-1743336-6 | D-E      | 5WY6 7043 |
| KR 9301.78.61       | 5-1743336-7 | E-G      | 5WY6 7044 |
| KR 9301.78.62       | 5-1743336-8 | C-K      | 5WY6 7045 |
| KR 9301.78.63       | 5-1743336-9 | G-L      | 5WY6 7046 |
| KR 9301.78.64       | 6-1743336-1 | A-B      | 5WY6 7047 |
| KR 9301.78.65       | 6-1743336-2 | E-F      | 5WY6 7048 |
| KR 9301.78.66       | 6-1743336-3 | B-K      | 5WY6 7049 |
| KR 9301.78.67       | 6-1743336-4 | C-E      | 5WY6 7050 |
| KR 9301.78.68       | 6-1743336-5 | B-L      | 5WY6 7052 |
| KR 9301.78.69       | 6-1743336-6 | A-G      | 5WY6 7053 |
| KR 9301.78.70       | 6-1743336-7 | F-K      | 5WY6 7054 |
| KR 9301.78.71       | 6-1743336-8 | D-L      | 5WY6 7055 |
| KR 9301.78.72       | 6-1743336-9 | A-F      | 5WY6 7056 |

| CONNECTOR, ECU SIDE |             |          |           |
|---------------------|-------------|----------|-----------|
| SIEMENS P/NO.       | TE P/NO.    | KEY CODE | MLFB      |
| KR 9301.78.73       | 7-1743336-2 | B-D      | 5WY6 7057 |
| KR 9301.78.74       | 7-1743336-3 | F-H      | 5WY6 7058 |
| KR 9301.78.75       | 7-1743336-4 | A-D      | 5WY6 7059 |
|                     |             |          |           |
|                     |             |          |           |
|                     |             |          |           |
|                     |             |          |           |
|                     |             |          |           |
|                     |             |          |           |
|                     |             |          |           |
|                     |             |          |           |
|                     |             |          |           |
|                     |             |          |           |
|                     |             |          |           |
|                     |             |          |           |
|                     |             |          |           |
|                     |             |          |           |
|                     |             |          |           |
|                     |             |          |           |
|                     |             |          |           |
|                     |             |          |           |
|                     |             |          |           |
|                     |             |          |           |
|                     |             |          |           |
|                     |             |          |           |
|                     |             |          |           |
|                     |             |          |           |
|                     |             |          |           |

|                   |                     |   |                  |
|-------------------|---------------------|---|------------------|
| <b>WAGO</b>       |                     | <b>AMP KOREA</b><br>Kyungsan, Korea         |                  |
| SHEET NO<br>00779 | DRAWING NO<br>00779 | TITLE<br>AIR BAG 7SP HEADER ASSEMBLYFA-IIID | REVISION NO<br>1 |
| CUSTOMER DRAWING  |                     | DATE: 2/1 1985 5 5 REV D                    |                  |