

High Performance Isolation Amplifier, 12.5 dB Gain 20 - 500 MHz

AM-/AMC-157

V2.00

Features

- 35 dB Typical Reverse Isolation
- +42 dBm Typical Third Order Intercept
- +24 dBm Typical 1 dB Compression
- 1.21:1 Typical VSWR

Guaranteed Specifications* (From -55°C to +85°C Case Temp)

Frequency Range	20-500 MHz
Gain (+25°C) @ 50 MHz	12.5 ± 0.8 dB
Frequency Response	± 0.5 dB Max
Gain Variation with Temperature	± 1.0 dB Max
Output Power (1 dB Compression)	+21 dBm Min
Noise Figure	7.5 dB Max
Reverse Transmission	-22 dB Max -30 dB Typ
VSWR	
20-30 MHz	2.0:1 Max
30-500 MHz	1.5:1 Max
Intermodulation Intercept Point (for two-tone output power up to +5 dBm)	
Second Order	+40 dBm Min
Third Order	+30 dBm Min
Bias Power	+15 VDC @ 90 mA Max (80 mA, 1.2W Typical)

Operating Characteristics

Impedance	50 Ohms Nominal
Maximum Rating	
RF Input	+13 dBm
Environmental	
MIL-STD-883 screening available.	

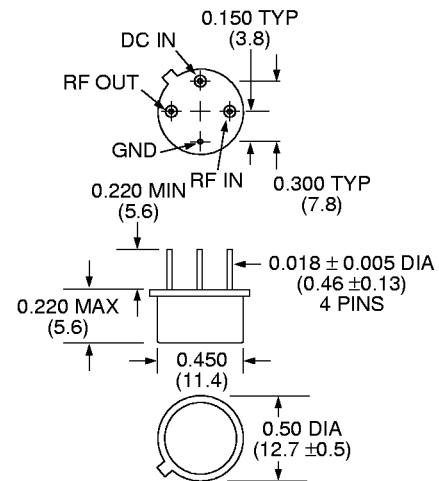
*All specifications apply when operated at +15 VDC, with 50 ohm source and load impedance.
This product contains elements protected by United States Patent Number 3,426,298.
Heat Sinking: Operating at case temperatures above 95°C is not recommended. Heat sinking adequate to dissipate 1.2 W must be provided in use.

Ordering Information

Model No.	Package
AM-157* PIN	TO-8-1
AMC-157 SMA	Connectorized

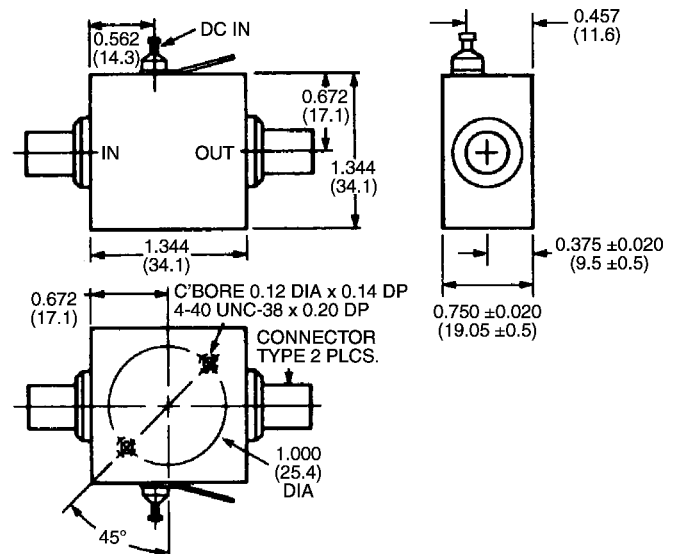
*Mounting kit part number AU00071 required for PCB applications.

TO-8-1



Dimensions in () are in mm.
Unless Otherwise Noted: .xxx = ±0.010 (.xx = ±0.25)
.xx = ±0.02 (.x = ±0.5)
WEIGHT (APPROX.): 0.10 OUNCES 2.8 GRAMS

C-32



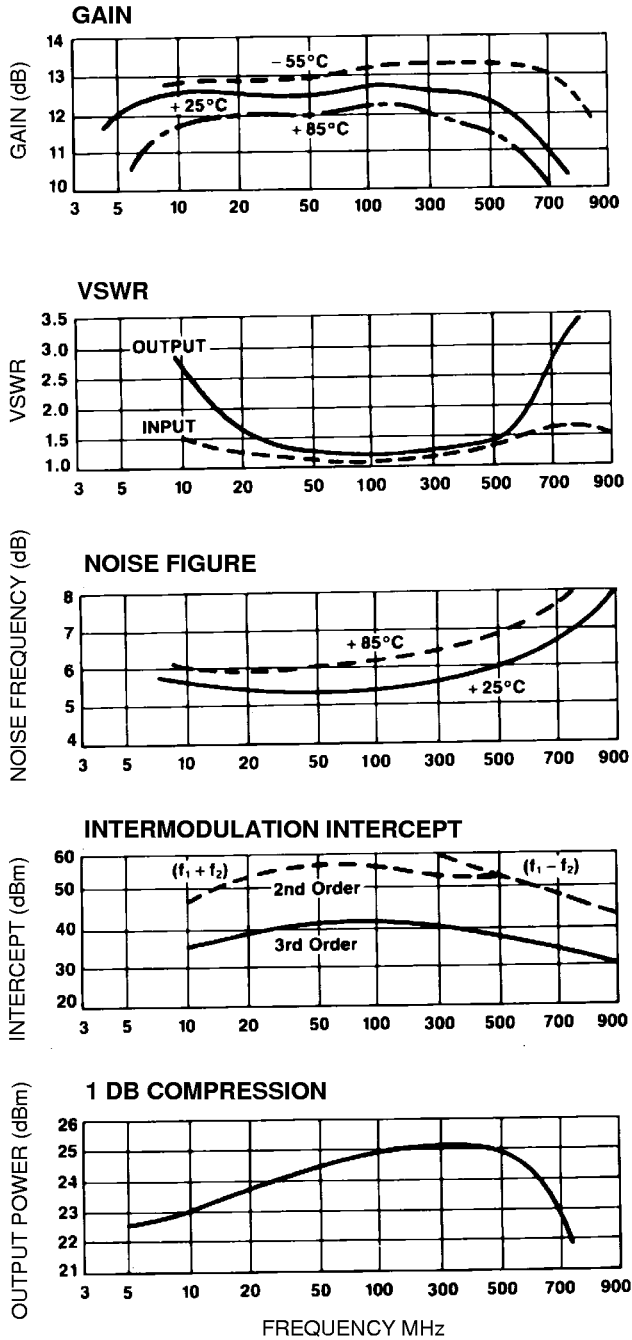
Dimensions in () are in mm.
Unless Otherwise Noted: .xxx = ±0.010 (.xx = ± 0.25)
.xx = ±0.02 (.x = ±0.5)
WEIGHT (APPROX.): 1.62 OUNCES 46 GRAMS

Specifications Subject to Change Without Notice.

M/A-COM, Inc.

North America: Tel. (800) 366-2266 ■ Asia/Pacific: Tel. +81 (03) 3226-1671 ■ Europe: Tel. +44 (1344) 869 595
Fax (800) 618-8883 Fax +81 (03) 3226-1451 Fax +44 (1344) 300 020

Typical Performance



Specifications Subject to Change Without Notice.