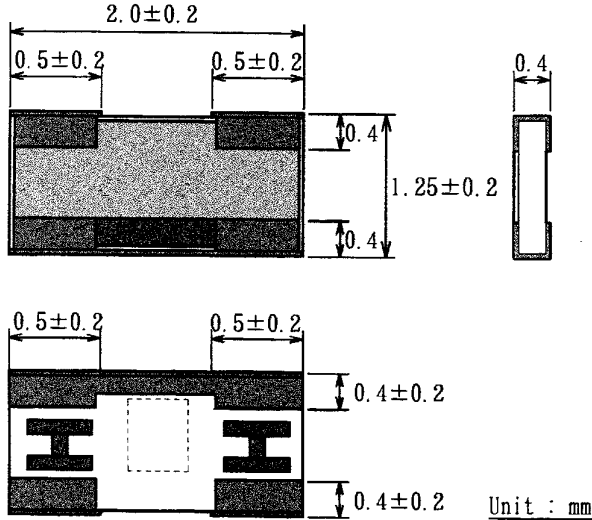
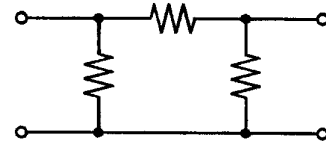


This 1220(0805) size chip attenuator exhibit excellent high frequency characteristic. The surface mount package is ideal for low noise and parasitic capacitance applications. The thin metallization also offer very stable characteristics over temperature and time.

◆ Mechanical



◆ Schematic Diagram



◆ Electrical

| | |
|-----------------------|----------------------------------|
| Attenuation (dB) | 0, 1, 2, 3, 4, 5, 6, 7, 8, 9, 10 |
| Att. Tolerance | 0 dB ~ 10 dB : ± 0.3 dB |
| Impedance | 50Ω (C) |
| VSWR | 1.3 |
| Frequency Range | DC ~ 10 GHz |
| Power Rating | 100 mW |
| Rated Operating Temp. | 70°C |
| Op. Temp. Range | -55°C ~ +125°C |

◆ Part Number

| | | | | | |
|--------------|--------------|-----------|-------------|----------|------------------------|
| <u>PAT</u> | <u>1220</u> | <u>C</u> | <u>3 dB</u> | <u>T</u> | |
| Product Code | Package Size | Impedance | Attenuation | Package | T : Taping B : Bulk |

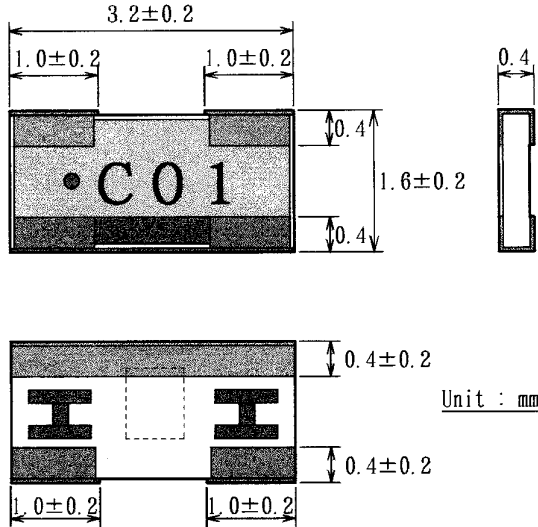
RHOPOINT COMPONENTS LTD

Holland Road, Hurst Green, Oxted,
Surrey, RH8 9AX, UK

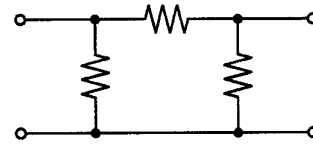
Tel: 01883 717988 (Outside UK Tel: 44 1883 717 988)
 Fax: 01883 712938 (Outside UK Fax: 44 1883 712 938)
 Email: components@rhopoint.co.uk
 Web site: www.rhopoint.co.uk

This 1632(1206) size chip attenuator exhibit excellent high frequency characteristic. The surface mount package is ideal for low noise and parasitic capacitance applications. The thin metallization also offer very stable charactersitics over temperature and time.

◆ Mechanical



◆ Schematic Diagram



◆ Electrical

| | |
|------------------------|---|
| Attenuation (dB) | 0, 1, 2, 3, 4, 5, 6, 7, 8, 9, 10, 16, |
| Att. Tolerance | 0 dB ~ 10 dB : ± 0.3 dB, 16 dB ~ 20 dB : ± 0.5 dB |
| Impedance | 50Ω (C) |
| VSWR | 1.3 |
| Frequency Range | DC ~ 10 GHz |
| Power Rating | 125 mW |
| Rated Operating. Temp. | 70°C |
| Op. Temp. Range | -55°C ~ +125°C |

◆ Part Number

PAT 1632 C 3 dB T T : Taping
 Product Code Package Size Impedance Attenuation Package B : Bulk

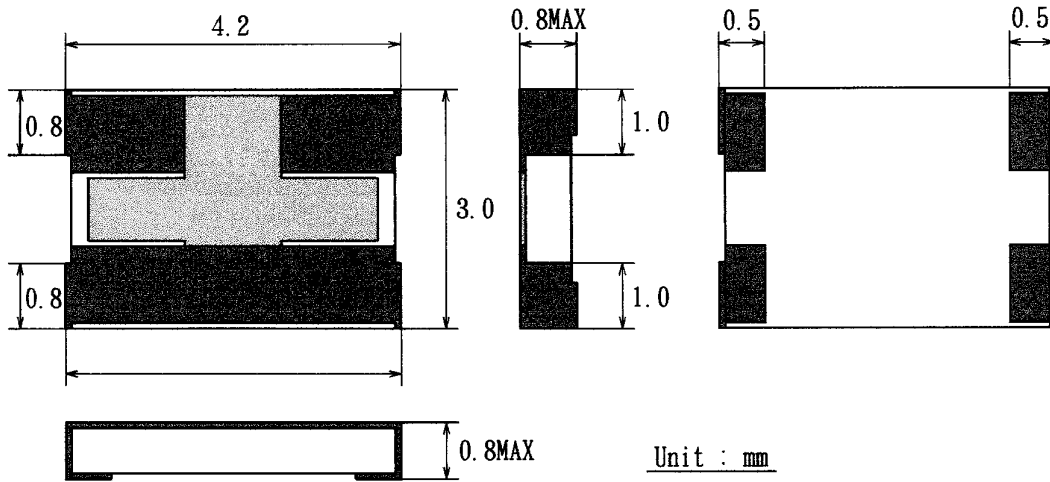
RHOPOINT COMPONENTS LTD

Holland Road, Hurst Green, Oxted,
Surrey, RH8 9AX, UK

Tel: 01883 717988 (Outside UK Tel: 44 1883 717 988)
 Fax: 01883 712938 (Outside UK Fax: 44 1883 712 938)
 Email: components@rhopoint.co.uk
 Web site: www.rhopoint.co.uk

This 3042S(1612) size chip attenuator exhibit excellent high frequency characteristic. The surface mount package is ideal for low noise and parasitic capacitance applications. The thin metallization also offer very stable charactersitics over temperature and time.

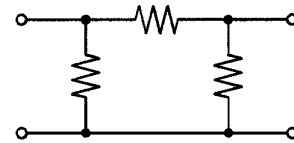
◆ Mechanical



◆ Electrical

| | | |
|-----------------------|---|------------|
| Attenuation (dB) | 0, 1, 2, 3, 4, 5, 6, 7, 8, 9, 10, 16, 20 | |
| Att. Tolerance | 0 dB ~ 10 dB : ± 0.3 dB 16 dB ~ 20 dB : ± 0.5 dB | |
| Impedance | 50 Ω (C) | 75 Ω (D) |
| VSWR | 1.2 | 1.3 |
| Frequency Range | DC ~ 3 GHz | DC ~ 2 GHz |
| Power Rating | 250 mW | |
| Rated Operating Temp. | 70°C | |
| Op. Temp. Range | -55°C ~ +125°C | |

◆ Schematic Diagram



◆ Part Number

PAT 3042S C 3 dB T T : Taping
 Product Code Package Size Impedance Attenuation Package B : Bulk

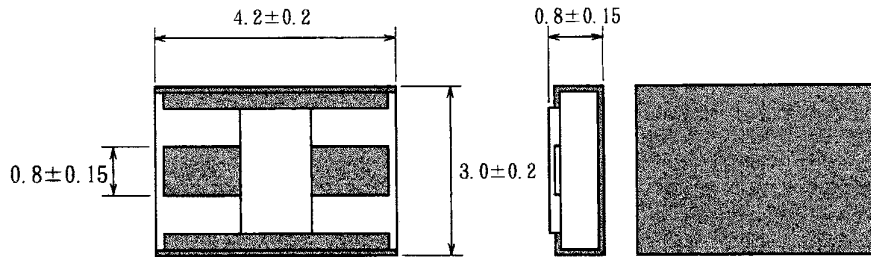
RHOPOINT COMPONENTS LTD

Holland Road, Hurst Green, Oxted,
Surrey, RH8 9AX, UK

Tel: 01883 717988 (Outside UK Tel: 44 1883 717 988)
 Fax: 01883 712938 (Outside UK Fax: 44 1883 712 938)
 Email: components@rhopoint.co.uk
 Web site: www.rhopoint.co.uk

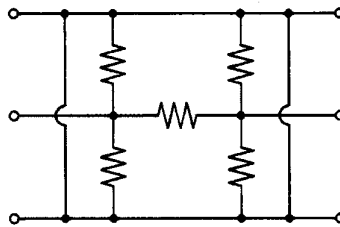
High performance thin film attenuators in a surface mount chip package. These devices offer 0 to 16dB attenuation, are suited for high density circuit population, and have excellent characteristics for high frequency up to 10 GHz.

◆ Mechanical



Unit : mm

◆ Schematic Diagram



◆ Electrical

| | |
|--------------------|--|
| Attenuation (dB) | 0, 1, 2, 3, 4, 5, 6, 7, 8, 9, 10, 16, 20 |
| Impedance | 50Ω |
| VSWR | 1.1 (DC~2GHz) 1.2 (2~5GHz) 1.3 (5~10GHz) |
| Frequency Range | DC ~ 10 GHz |
| Power Rating | 250 mW |
| Rated Op. Temp. | 70°C |
| Op. Temp. Range | -55°C ~ +125°C |

| Rank | Attenuation Tolerance | | |
|-----------|-----------------------|--------|---------|
| | DC~2GHz | 2~5GHz | 5~10GHz |
| 0~10 dB | | | |
| Rank A | ±0.1dB | ±0.2dB | ±0.4dB |
| Rank B | ±0.2dB | ±0.3dB | ±0.5dB |
| 16, 20 dB | | | |
| Rank B | ±0.2dB | ±0.3dB | ±0.5dB |

◆ Part Number

| | | | | | |
|--------------|--------------|-----------|-------------|------|---------|
| PAT | 3042 | C | 3 dB | A | B |
| Product Code | Package Size | Impedance | Attenuation | Rank | Package |

 B : Bulk

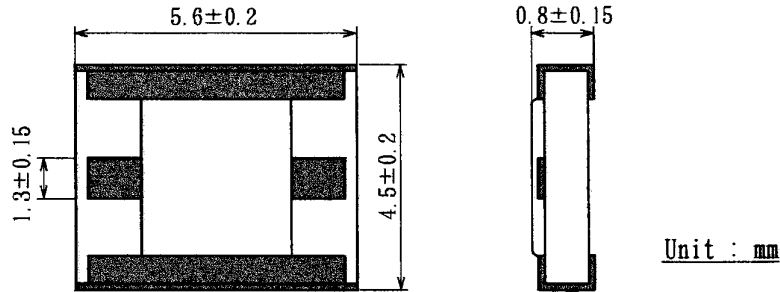
RHOPOINT COMPONENTS LTD

Holland Road, Hurst Green, Oxted,
Surrey, RH8 9AX, UK

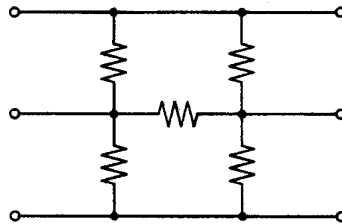
Tel: 01883 717988 (Outside UK Tel: 44 1883 717 988)
 Fax: 01883 712938 (Outside UK Fax: 44 1883 712 938)
 Email: components@rhopoint.co.uk
 Web site: www.rhopoint.co.uk

High performance thin film attenuators in a surface mount chip package. These devices offer 0 to 16dB attenuation, are suited for high density circuit population, and have excellent characteristics for high frequency up to 10 GHz.

◆ Mechanical



◆ Schematic Diagram



◆ Electrical

| | |
|------------------|--|
| Attenuation (dB) | 0, 1, 2, 3, 4, 5, 6, 7, 8, 9, 10, 16, 20 |
| Impedance | 50Ω |
| VSWR | 1.1 (DC~2GHz) 1.2 (2~5GHz) 1.3 (5~10GHz) |
| Frequency Range | DC ~ 10 GHz |
| Power Rating | 500 mW |
| Rated Op. Temp. | 70°C |
| Op. Temp. Range | -55°C ~ +125°C |

| Rank | Attenuation Tolerance | | |
|-----------|-----------------------|--------|---------|
| | DC~2GHz | 2~5GHz | 5~10GHz |
| 0~10 dB | | | |
| Rank A | ±0.1dB | ±0.2dB | ±0.4dB |
| Rank B | ±0.2dB | ±0.3dB | ±0.5dB |
| 16, 20 dB | | | |
| Rank B | ±0.2dB | ±0.3dB | ±0.5dB |

◆ Part Number

| | | | | | |
|--------------|--------------|-----------|-------------|------|---------|
| PAT | 4556 | C | 3 dB | A | B |
| Product Code | Package Size | Impedance | Attenuation | Rank | Package |

 B : Bulk

RHOPOINT COMPONENTS LTD

Holland Road, Hurst Green, Oxted,
Surrey, RH8 9AX, UK

Tel: 01883 717988 (Outside UK Tel: 44 1883 717 988)
 Fax: 01883 712938 (Outside UK Fax: 44 1883 712 938)
 Email: components@rhopoint.co.uk
 Web site: www.rhopoint.co.uk