

## OV9640 Color CMOS 1.3 MegaPixel (VarioPixel®) CAMERACHIP™

### General Description

The OV9640 CAMERACHIP™ is a low voltage CMOS image sensors that provides the full functionality of a single-chip 1.3 MegaPixel camera and image processor in a small footprint package. The OV9640 provides full-frame, sub-sampled or windowed 8-bit/10-bit images in a wide range of formats, controlled through the Serial Camera Control Bus (SCCB) interface.

This product has an image array capable of operating at up to 15 frames per second (fps) in full resolution (1280 x 960) with complete user control over image quality, formatting and output data transfer. All required image processing functions, including exposure control, gamma, white balance, color saturation, hue control and more, are also programmable through the SCCB interface. In addition, OmniVision CAMERACHIPS use proprietary sensor technology to improve image quality by reducing or eliminating common lighting/electrical sources of image contamination, such as fixed pattern noise, smearing, blooming, etc., to produce a clean, fully stable color image.

### Features

- High sensitivity for low-light operation
- Low operating voltage for embedded portable applications
- Standard SCCB interface
- Supports 1280 x 960 resolution, VGA, QVGA, QQVGA, CIF, QCIF, QQCIF, and windowed outputs with Raw RGG, RGB (GRB 4:2:2), YUV (4:2:2) and YCbCr (4:2:2) formats
- VarioPixel® method for sub-sampling formats (VGA, QVGA, QQVGA, CIF, QCIF, and QQCIF)
- Automatic image control functions including: Automatic Exposure Control (AEC), Automatic Gain Control (AGC), Automatic White Balance (AWB), Automatic Band Filter (ABF), and Automatic Black-Level Calibration (ABLC)
- Image quality controls including color saturation, hue, gamma, sharpness (edge enhancement), and anti-blooming

### Applications

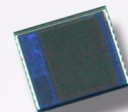
- Cellular and Picture Phones
- Toys
- PC Multimedia
- Digital Still Cameras

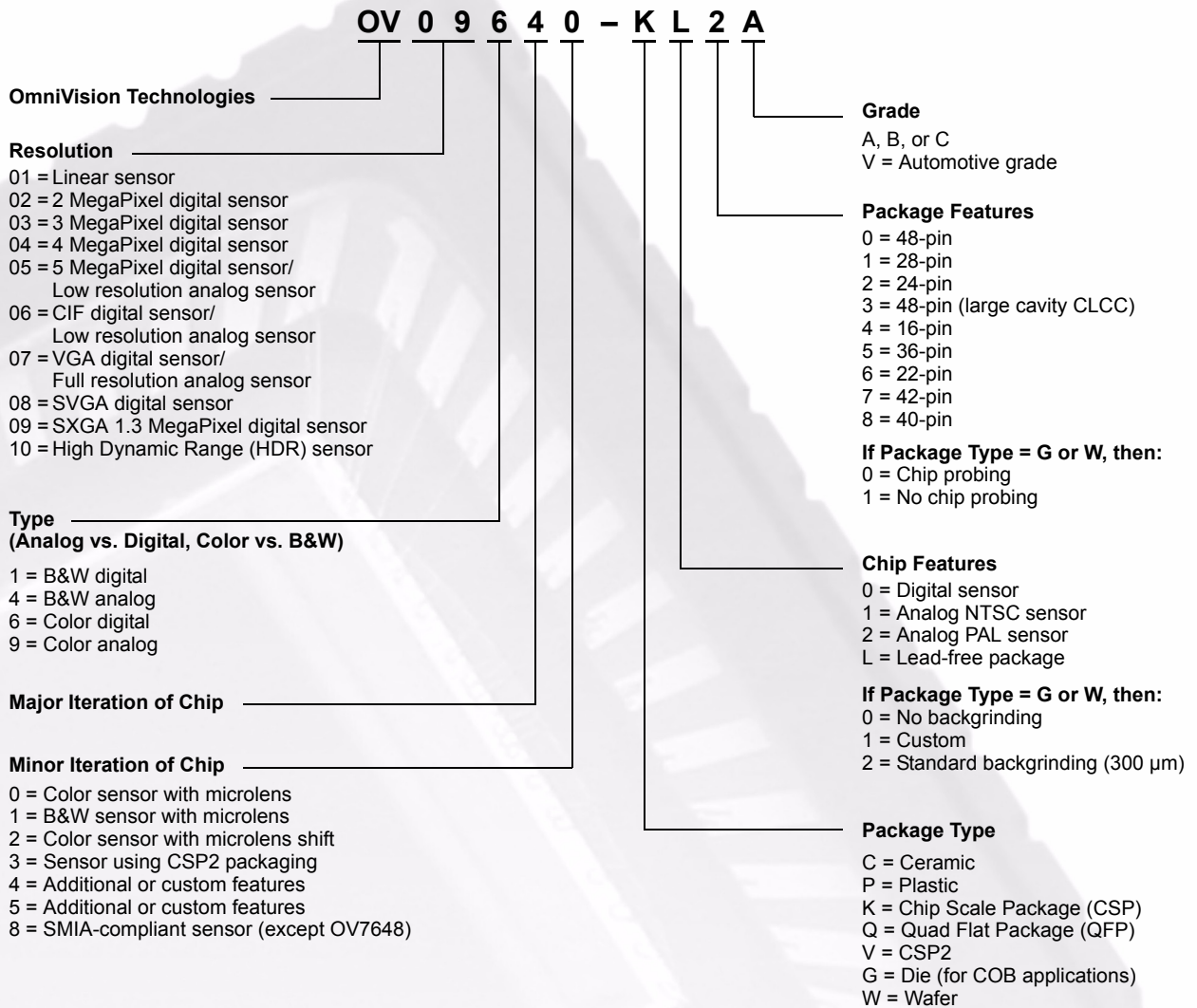
### Key Specifications

<b>Active Array Size</b>		1304 x 968
<b>Power Supply</b>	<b>Core</b>	1.8VDC $\pm$ 10%
	<b>Analog</b>	2.45 to 2.8 VDC
	<b>I/O</b>	2.5V to 3.3V
<b>Power Requirements</b>	<b>Active</b>	50 mW (15 fps, no I/O power)
	<b>Standby</b>	30 $\mu$ W
<b>Temperature Range</b>	<b>Operation</b>	-10°C to 70°C
	<b>Stable Image</b>	0°C to 50°C
<b>Output Formats (8-bit)</b>		<ul style="list-style-type: none"> <li>• YUV/YCbCr 4:2:2</li> <li>• GRB 4:2:2</li> <li>• Raw RGB Data</li> </ul>
<b>Lens Size</b>		1/4"
<b>Maximum Image Transfer Rate</b>	<b>1280 x 960</b>	15 fps
	<b>VGA</b>	30 fps
	<b>QVGA, QQVGA, CIF</b>	60 fps
	<b>QCIF, QQCIF</b>	120 fps
<b>Sensitivity</b>		0.9 v/Lux-sec
<b>S/N Ratio</b>		40 dB
<b>Dynamic Range</b>		62 dB
<b>Scan Mode</b>		Progressive
<b>Max. Exposure Interval</b>		1000 x $t_{ROW}$
<b>Gamma Correction</b>		Programmable
<b>Pixel Size</b>		3.18 $\mu$ m x 3.18 $\mu$ m
<b>Dark Current</b>		30 mV/s
<b>Well Capacity</b>		28 Ke
<b>Fixed Pattern Noise</b>		<0.03% of $V_{PEAK-TO-PEAK}$
<b>Image Area</b>		4.15 mm x 3.08 mm
<b>Package Dimensions</b>		4975 $\mu$ m x 5365 $\mu$ m

### Ordering Information

Product	Package
OV09640-K02A (Color, w/ lead)	CSP-24
OV09640-KL2A (Color, w/o lead)	CSP-24





[www.ovt.com](http://www.ovt.com)

OmniVision reserves the right to make changes to their products or to discontinue any product or service without further notice. 'OmniVision', the OmniVision logo, 'VarioPixel', and 'OmniPixel' are registered trademarks of OmniVision Technology. All other trademarks are the property of their respective owners.

Version 1.8, 09/03/04

