



SAW Components

Data Sheet B7822





SAW Components

B7822

Low-Loss Filter for Mobile Communication

1842,5 MHz

Data Sheet



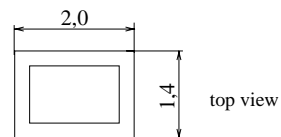
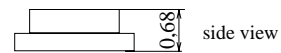
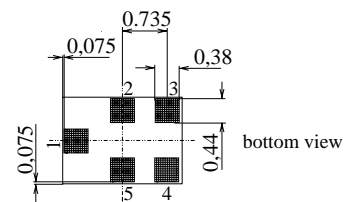
Chip sized SAW package

Features

- Low-loss RF filter for mobile telephone PCN systems, receive path
- High selectivity up to 6 GHz
- Low amplitude ripple
- Usable passband 75 MHz
- Suitable for GPRS class 1 to 12
- Package for **Surface Mount Technology (SMT)**

Terminals

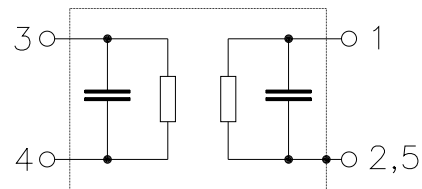
- Gold-plated Ni



Dimensions in mm, approx. weight 0,007 g

Pin configuration

- | | |
|-----|--------------------|
| 1 | Input, unbalanced |
| 4 | Output, unbalanced |
| 2,5 | Case ground |
| 3 | to be grounded |



Type	Ordering code	Marking and Package according to	Packing according to
B7822	B39182-B7822-C710	C61157-A7-A111	F61074-V8151-Z000

Electrostatic Sensitive Device (ESD)

Maximum ratings

Operable temperature range	T	- 10 / + 80	°C	
Storage temperature range	T_{stg}	- 40 / + 85	°C	
DC voltage	V_{DC}	3	V	
ESD voltage	V_{ESD}	50	V	
Input power at				
GSM850, GSM900	P_{IN}	15	dBm	peak power of GSM signal duty cycle 4:8
GSM1800, GSM1900	P_{IN}	12	dBm	
Tx bands				



SAW Components

B7822

Low-Loss Filter for Mobile Communication

1842,5 MHz

Data Sheet



Characteristics

Operating Temperature Range: $T = +25 \pm 2 \text{ }^\circ\text{C}$
 Terminating source impedance: $Z_S = 50\Omega$ (unbalanced)
 Terminating load impedance: $Z_L = 50\Omega$ (unbalanced)

		min.	typ.	max.	
Center frequency	f_C	—	1842,5	—	MHz
Maximum insertion attenuation	α_{\max}	—	2,3	2,8	dB
	1805,0 ... 1880,0 MHz				
Amplitude ripple (p-p)	$\Delta\alpha$	—	0,8	1,5	dB
	1805,0 ... 1880,0 MHz				
Input VSWR		—	2,1	2,3	
	1805,0 ... 1880,0 MHz				
Output VSWR		—	2,0	2,2	
	1805,0 ... 1880,0 MHz				
Attenuation	α				dB
	0,0 ... 1480,0 MHz	30	34	—	dB
	1480,0 ... 1765,0 MHz	22	27	—	dB
	1765,0 ... 1785,0 MHz	14	16	—	dB
	1920,0 ... 1980,0 MHz	18	23	—	dB
	1980,0 ... 2400,0 MHz	25	28	—	dB
	2400,0 ... 2500,0 MHz	30	37	—	dB
	2500,0 ... 3610,0 MHz	25	32	—	dB
	3610,0 ... 3760,0 MHz	35	44	—	dB
	3760,0 ... 6000,0 MHz	25	39	—	dB



SAW Components

B7822

Low-Loss Filter for Mobile Communication

1842,5 MHz

Data Sheet



Characteristics

Operating Temperature Range: $T = -10$ to $+80^{\circ}\text{C}$
 Terminating source impedance: $Z_S = 50\Omega$ (unbalanced)
 Terminating load impedance: $Z_L = 50\Omega$ (unbalanced)

			min.	typ.	max.	
Center frequency	f_c		—	1842,5	—	MHz
Maximum insertion attenuation	α_{\max}					
		1805,0 ... 1880,0 MHz	—	2,4	3,1	dB
Amplitude ripple (p-p)	$\Delta\alpha$					
		1805,0 ... 1880,0 MHz	—	0,9	1,8	dB
Input VSWR		1805,0 ... 1880,0 MHz	—	2,1	2,3	
Output VSWR		1805,0 ... 1880,0 MHz	—	2,0	2,2	
Attenuation	α					
		0,0 ... 1480,0 MHz	30	34	—	dB
		1480,0 ... 1765,0 MHz	21	25	—	dB
		1765,0 ... 1785,0 MHz	11	14	—	dB
		1920,0 ... 1980,0 MHz	18	23	—	dB
		1980,0 ... 2400,0 MHz	24	27	—	dB
		2400,0 ... 2500,0 MHz	30	37	—	dB
		2500,0 ... 3610,0 MHz	25	32	—	dB
		3610,0 ... 3760,0 MHz	35	44	—	dB
		3760,0 ... 6000,0 MHz	25	39	—	dB



SAW Components

B7822

Low-Loss Filter for Mobile Communication

1842,5 MHz

Data Sheet



Characteristics

Operating Temperature Range: $T = -20$ to $+85^{\circ}\text{C}$
 Terminating source impedance: $Z_S = 50\Omega$ (unbalanced)
 Terminating load impedance: $Z_L = 50\Omega$ (unbalanced)

			min.	typ.	max.	
Center frequency	f_c		—	1842,5	—	MHz
Maximum insertion attenuation	α_{\max}					
		1805,0 ... 1880,0 MHz	—	2,7	3,4	dB
Amplitude ripple (p-p)	$\Delta\alpha$					
		1805,0 ... 1880,0 MHz	—	1,2	2,1	dB
Input VSWR		1805,0 ... 1880,0 MHz	—	2,1	2,3	
Output VSWR		1805,0 ... 1880,0 MHz	—	2,1	2,4	
Attenuation	α					
		0,0 ... 1480,0 MHz	30	34	—	dB
		1480,0 ... 1765,0 MHz	21	25	—	dB
		1765,0 ... 1785,0 MHz	10	13	—	dB
		1920,0 ... 1980,0 MHz	18	23	—	dB
		1980,0 ... 2400,0 MHz	24	27	—	dB
		2400,0 ... 2500,0 MHz	30	37	—	dB
		2500,0 ... 3610,0 MHz	25	32	—	dB
		3610,0 ... 3760,0 MHz	35	44	—	dB
		3760,0 ... 6000,0 MHz	25	39	—	dB



SAW Components

B7822

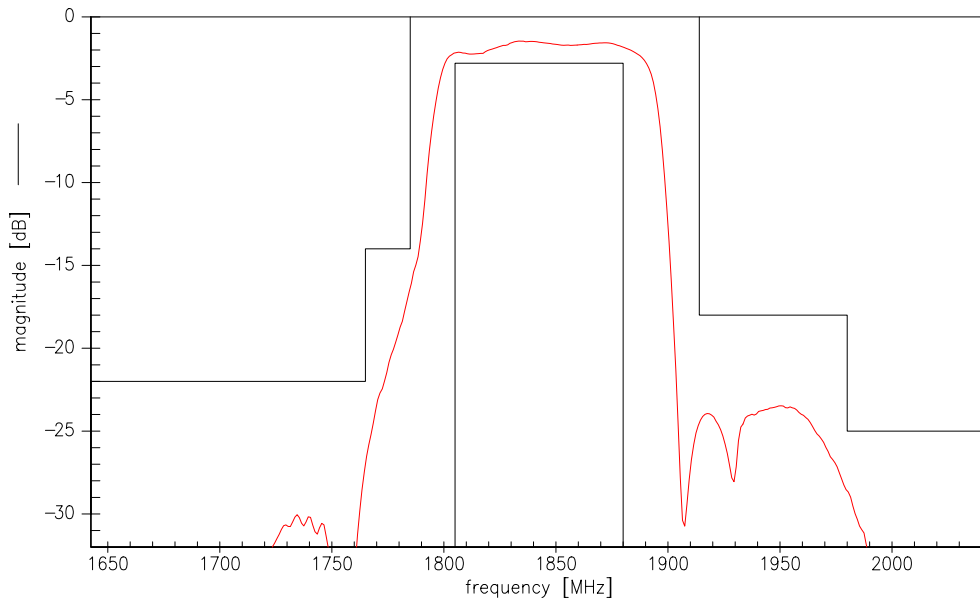
Low-Loss Filter for Mobile Communication

1842,5 MHz

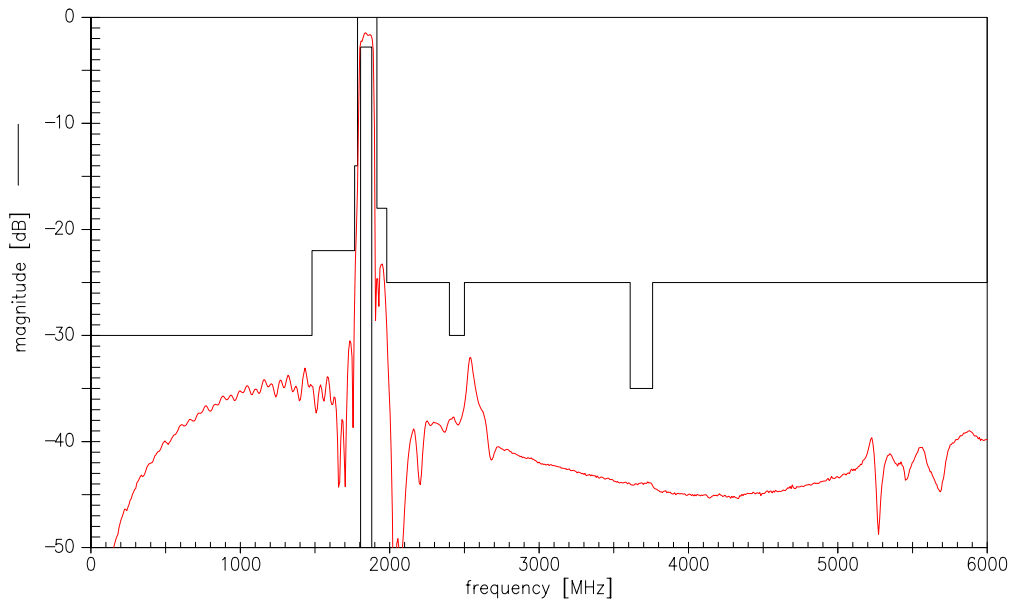
Data Sheet



Transfer function (spec for 25° C)



Transfer function (wideband)





SAW Components

B7822

Low-Loss Filter for Mobile Communication

1842,5 MHz

Data Sheet



Published by EPCOS AG

Surface Acoustic Wave Components Division, SAW MC WT

P.O. Box 80 17 09, D-81617 München

© EPCOS AG 2003. All Rights Reserved. Reproduction, publication and dissemination of this brochure and the information contained therein without EPCOS' prior express consent is prohibited.

The information contained in this brochure describes the type of component and shall not be considered as guaranteed characteristics. Purchase orders are subject to the General Conditions for the Supply of Products and Services of the Electrical and Electronics Industry recommended by the ZVEI (German Electrical and Electronic Manufacturers' Association), unless otherwise agreed.

This brochure replaces the previous edition.

For questions on technology, prices and delivery please contact the Sales Offices of EPCOS AG or the international Representatives.

Due to technical requirements components may contain dangerous substances. For information on the type in question please also contact one of our Sales Offices.