

BXA40 Series

Single output

Total Power: 40W
Input Voltage: 18 - 36VDC
36 - 75VDC
of Outputs: Single



Special Features

- Pin-compatible with NFC40 Series
- Meets telecom power supply interface standard ETS300-132-2
- EN60950, CSA C22.2 No. 950 and UL1950 safety approvals
- EN61000-4-2, -3, -4, -5, -6 immunity compliant
- Fixed frequency operation at 350 kHz typ.
- MTBF in excess of 500,000 hours
- Basic insulation system with 1500 Vdc isolation
- Remote sense on low voltage logic outputs
- Output voltage trim
- Available RoHS compliant
- 2 year warranty

Safety

VDE0805/EN60950/IEC950
File No. 14501-3336-7009
Licence No. 6296

UL1950 File No. E174104

CSA C22.2 No. 950
File No. LR41062C

The BXA40 Series providing up to 40 Watts, has been conceived as an applications specific range of dc-dc converters, specifically addressing telecommunications, industrial electronics, test equipment, mobile telecommunications and distributed power applications. The series offers two wide input voltage ranges, 18 Vdc to 36 Vdc and 36 Vdc to 75 Vdc, and is available with single outputs from 2.9 V to 12 V. The BXA40 series is designed to meet ETSI telecoms interface standards ETS300-132-2. Together with internal filtering, safety approval to IEC950 and basic insulation, the 48 V models are ideal for telecommunications applications. The 24 V models are particularly suited to industrial and test equipment applications, featuring EN61000-4-2, -3, -4, -5 and -6 immunity compliance. Other features include low output ripple, overvoltage protection, indefinite short circuit protection, remote enable and remote sense.



Specifications

All specifications are typical at nominal input, full load at 25°C unless otherwise stated.

OUTPUT SPECIFICATIONS

| | | |
|--|--|-------------------------|
| Voltage adjustability | | ±10% |
| Line regulation | Low line to high line | ±0.3% |
| Load regulation | Full load to no load | ±1.0% |
| Ripple and noise (20 MHz bandwidth) | 2.9 V and 3.3 V | 30 mV pk-pk |
| | 5 V | 50 mV pk-pk |
| | 12 V | 100 mV pk-pk |
| | All models | 20 mV rms |
| Temperature coefficient | | ±0.02%/°C |
| Overvoltage protection | (See Note 9) | 135% Vout |
| Short circuit protection | (See Note 10) | Continuous |
| Transient response | 25% to 100% load (See Note 11) | 4.0% |
| Voltage accuracy | | ±1.0% ≤5 V, ±2.0% ≥12 V |
| Remote sense (See Note 8) | Compensated line drops up to 0.5 V on 5 V models Compensated line drop up to 300 mV on 2.9 V and 3.3 V models | |

INPUT SPECIFICATIONS

| | | |
|--------------------------------------|----------------------------------|------------------------------------|
| Input voltage range | 24 Vin nominal 48 Vin nominal | 18-36 Vdc 36-75 Vdc |
| Reverse voltage protection | | (See Note 5) |
| Max. input rise and fall time | 48 V | 5 V/ms ETS300-132 |
| Start-up time | | 30 ms typ. |
| Remote ON/OFF Logic compatibility | ON OFF | CMOS/TTL Open-circuit <1 Vdc |

EMC CHARACTERISTICS

| | | |
|---------------------|---|------------------|
| Conducted emissions | EN55022, FCC part 15, (See Notes 4 and 13) | Level B |
| Radiated emissions | EN55022, FCC part 15 | Level A |
| ESD air | EN61000-4-2, level 3 | Perf. criteria 1 |
| ESD contact | EN61000-4-2, level 4 | Perf. criteria 1 |
| Surge | EN61000-4-5, level 3 | Perf. criteria 1 |
| Fast transients | EN61000-4-4, level 3 | Perf. criteria 1 |
| Radiated immunity | EN61000-4-3, level 3 | Perf. criteria 1 |
| Conducted immunity | EN61000-4-6, level 3 | Perf. criteria 1 |

GENERAL SPECIFICATIONS

| | | |
|-------------------------|----------------------------|---|
| Efficiency | | See table |
| Isolation voltage | Input/output Input/case | 1500 Vdc 1500 Vdc |
| Switching frequency | Fixed | 350 kHz typ. |
| Approvals and standards | | EN60950, UL1950 CSA C22.2 No. 950 |
| Case material | | Aluminum substrate with plastic case |
| Material flammability | | UL94V-0 |
| Weight | | 85 g (3.0 oz) |
| MTBF | MIL-HDBK-217F | 500,000 hours |
| Size | | 2.2 x 2.2 x 0.5 inches 55.9 x 55.9 x 12.7 mm |

ENVIRONMENTAL SPECIFICATIONS

| | | |
|-----------------------------------|--|--|
| Thermal performance | Baseplate operating temperature Non-operating | -40 °C to +105 °C -55 °C to +105 °C |
| Thermal impedance (See Note 6) | No air flow, no heatsink No air flow, with heatsink | 8.5 °C/W 7.2 °C/W |

Specifications Contd.

| INPUT VOLTAGE | OUTPUT VOLTAGE | OUTPUT CURRENT (MAX.) | INPUT CURRENT ⁽¹⁾ | TYPICAL EFFICIENCY | REGULATION | | MODEL NUMBER ^(12,14,15) |
|---------------|----------------|-----------------------|------------------------------|--------------------|---------------------|---------------------|------------------------------------|
| | | | | | LINE ⁽²⁾ | LOAD ⁽³⁾ | |
| 18-36 Vdc | 3.3 V | 7 A | 70 mA | 75% | 0.3% | 1.0% | BXA40-24S3V3-SMJ ⁽⁸⁾ |
| 18-36 Vdc | 5 V | 8 A | 40 mA | 81% | 0.3% | 1.0% | BXA40-24S05-MJ ⁽⁸⁾ |
| 36-75 Vdc | 2.9 V | 6.9 A | 40 mA | 77% | 0.3% | 1.0% | BXA40-48S2V9-SMJ ⁽⁸⁾ |
| 36-75 Vdc | 5 V | 8.0 A | 30 mA | 82% | 0.3% | 1.0% | BXA40-48S05-MJ ⁽⁸⁾ |
| 36-75 Vdc | 12 V | 3.3 A | 30 mA | 87% | 0.3% | 1.0% | BXA40-48S12-MJ |

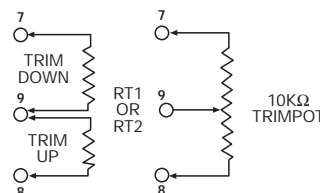
Notes

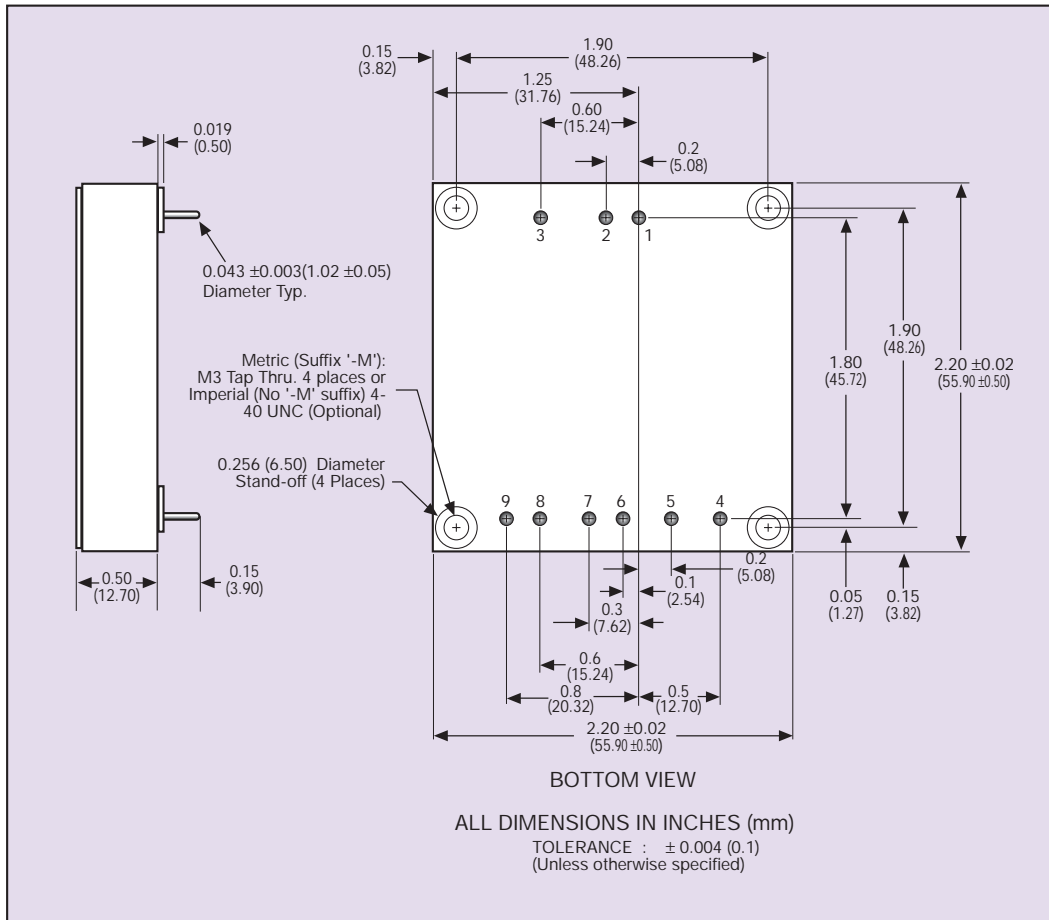
- Nominal line, at no load.
- Low line to high line at full load.
- Full load to no-load at nominal line.
- For conducted noise operation of the BXA40 to VDE0871, VDE0878 and EN55022 level B, see BXA40 Design Note 101.
- Reverse voltage protection can be implemented by putting a slow blow fuse on the positive input rail. Rate the fuse at 200 Vdc, 1.5 A for 48 Vdc inputs and 100 V, 4.5 A for 24 Vdc input units.
- The maximum operating ambient temperature, without derating depends on internal power dissipation and hence efficiency and cooling method. Download BXA40 Design Note 101 which provides detailed thermal calculations and design-in hints from the Artesyn website.
- Do not exceed a dv/dt rate of 100 V per second at the trim pin input if output current is less than 0.4% I_o max.
- Remote sense is offered as standard on the 2.9 V and 3.3 V products. The BXA40-24S05J and BXA40-48S05J come with remote sense as an option. Remote sense design is designated by the suffix '-S' e.g. **BXA40-48S05-SMJ** (for units with metric inserts), **BXA40-48S05-SJ** (for units with imperial inserts). For models without remote sense option, pin 5 and pin 6 are absent.
- Overvoltage protection is 118% on 3.3 V output model.
- For 2.9 V output, no short circuit protection above 90 °C baseplate temp.
- Transient response, 25% to 100% load, 10% for 2.9 V and 3.3 V models.
- Units with the suffix '-M' at the end of the model number are offered as standard with metric threaded inserts (M3). To order units with imperial threaded inserts (4-40 UNC) please remove the suffix '-M' from the model number. These inserts are used for bolting the unit to a PCB and/or fixing heatsinks.
- An external filter capacitor is necessary for safe operation of the 24 V input models. It is also suggested that an external filter capacitor be used on the 48 V input models. A 4 µF (or greater) film capacitor such as: ITW Paktron Capstick series, part number 405K100CS4 4 µF/100 V is recommended, if filtering is not used. See BXA40 Design Note 101.
- The 'J' suffix indicates that these parts are Pb-free (RoHS 6/6) compliant. TSE RoHS 5/6 (non Pb-free) compliant versions may be available on special request, please contact your local sales representative for details.
- NOTICE: Some models do not support all options. Please contact your local Artesyn representative or use the on-line model number search tool at <http://www.artesyn.com/powergroup/products.htm> to find a suitable alternative.

| PIN CONNECTIONS | |
|-----------------|------------------------|
| PIN NUMBER | SINGLE OUTPUT |
| 1 | + Input |
| 2 | - Input |
| 3 | Control |
| 4 | No Connection |
| 5 | - Sense ⁽⁸⁾ |
| 6 | + Sense ⁽⁸⁾ |
| 7 | + Output |
| 8 | Common |
| 9 | Trim |

EXTERNAL OUTPUT TRIMMING

Output can be externally trimmed by ±10% using either method shown below.





Americas

5810 Van Allen Way
Carlsbad, CA 92008
USA
Telephone: +1 760 930 4600
Facsimile: +1 760 930 0698

Europe (UK)

Waterfront Business Park
Merry Hill, Dudley
West Midlands, DY5 1LX
United Kingdom
Telephone: +44 (0) 1384 842 211
Facsimile: +44 (0) 1384 843 355

Asia (HK)

16th - 17th Floors, Lu Plaza
2 Wing Yip Street, Kwun Tong
Kowloon, Hong Kong
Telephone: +852 2176 3333
Facsimile: +852 2176 3888

For global contact, visit:

www.powerconversion.com

technicalsupport@powerconversion.com

While every precaution has been taken to ensure accuracy and completeness in this literature, Emerson Network Power assumes no responsibility, and disclaims all liability for damages resulting from use of this information or for any errors or omissions.

Emerson Network Power.

The global leader in enabling
business-critical continuity.

- AC Power
- Connectivity
- DC Power
- **Embedded Power**
- Inbound Power
- Integrated Cabinet Solutions
- Outside Plant
- Precision Cooling
- Site Monitoring and Services

EmersonNetworkPower.com

Emerson Network Power and the Emerson Network Power logo are trademarks and service marks of Emerson Electric Co.
©2007 Emerson Electric Co.