

# Technische Information/technical information

IGBT-Module  
IGBT-modules

# FZ1200R33KF2C




## Vorläufige Daten preliminary data

### IGBT-Wechselrichter/IGBT-inverter

#### Höchstzulässige Werte/maximum rated values

Kollektor-Emitter-Sperrspannung collector-emitter voltage	$T_{vj} = 25^{\circ}\text{C}$ $T_{vj} = -25^{\circ}\text{C}$	$V_{CES}$	3300 3300	V
Kollektor-Dauergleichstrom DC-collector current	$T_C = 80^{\circ}\text{C}$ $T_C = 25^{\circ}\text{C}$	$I_{C\text{ nom}}$ $I_C$	1200 2000	A A
Periodischer Kollektor Spitzenstrom repetitive peak collector current	$t_p = 1\text{ ms}$ , $T_C = 80^{\circ}\text{C}$	$I_{CRM}$	2400	A
Gesamt-Verlustleistung total power dissipation	$T_C = 25^{\circ}\text{C}$	$P_{tot}$	14,5	kW
Gate-Emitter-Spitzenspannung gate-emitter peak voltage		$V_{GES}$	+/-20	V

#### Charakteristische Werte/characteristic values

			min.	typ.	max.	
Kollektor-Emitter Sättigungsspannung collector-emitter saturation voltage	$I_C = 1200\text{ A}$ , $V_{GE} = 15\text{ V}$ , $T_{vj} = 25^{\circ}\text{C}$ $I_C = 1200\text{ A}$ , $V_{GE} = 15\text{ V}$ , $T_{vj} = 125^{\circ}\text{C}$	$V_{CE\text{ sat}}$		3,40 4,30	4,25 5,00	V V
Gate-Schwellenspannung gate threshold voltage	$I_C = 120\text{ mA}$ , $V_{CE} = V_{GE}$ , $T_{vj} = 25^{\circ}\text{C}$	$V_{GEth}$	4,2	5,1	6,0	V
Gateladung gate charge	$V_{GE} = -15\text{ V} \dots +15\text{ V}$ , $V_{CE} = 1800\text{ V}$	$Q_G$		22,0		$\mu\text{C}$
Interner Gatewiderstand internal gate resistor	$T_{vj} = 25^{\circ}\text{C}$	$R_{Gint}$		0,42		$\Omega$
Eingangskapazität input capacitance	$f = 1\text{ MHz}$ , $T_{vj} = 25^{\circ}\text{C}$ , $V_{CE} = 25\text{ V}$ , $V_{GE} = 0\text{ V}$	$C_{ies}$		150		nF
Rückwirkungskapazität reverse transfer capacitance	$f = 1\text{ MHz}$ , $T_{vj} = 25^{\circ}\text{C}$ , $V_{CE} = 25\text{ V}$ , $V_{GE} = 0\text{ V}$	$C_{res}$		8,00		nF
Kollektor-Emitter Reststrom collector-emitter cut-off current	$V_{CE} = 3300\text{ V}$ , $V_{GE} = 0\text{ V}$ , $T_{vj} = 25^{\circ}\text{C}$	$I_{CES}$		0,15	12	mA
Gate-Emitter Reststrom gate-emitter leakage current	$V_{CE} = 0\text{ V}$ , $V_{GE} = 20\text{ V}$ , $T_{vj} = 25^{\circ}\text{C}$	$I_{GES}$			400	nA
Einschaltverzögerungszeit (ind. Last) turn-on delay time (inductive load)	$I_C = 1200\text{ A}$ , $V_{CE} = 1800\text{ V}$ $V_{GE} = \pm 15\text{ V}$ , $R_{Gon} = 0,91\ \Omega$ , $C_{GE} = 220\text{ nF}$ , $T_{vj} = 25^{\circ}\text{C}$ $V_{GE} = \pm 15\text{ V}$ , $R_{Gon} = 0,91\ \Omega$ , $C_{GE} = 220\text{ nF}$ , $T_{vj} = 125^{\circ}\text{C}$	$t_{d\text{ on}}$		0,28 0,28		$\mu\text{s}$ $\mu\text{s}$
Anstiegszeit (induktive Last) rise time (inductive load)	$I_C = 1200\text{ A}$ , $V_{CE} = 1800\text{ V}$ $V_{GE} = \pm 15\text{ V}$ , $R_{Gon} = 0,91\ \Omega$ , $C_{GE} = 220\text{ nF}$ , $T_{vj} = 25^{\circ}\text{C}$ $V_{GE} = \pm 15\text{ V}$ , $R_{Gon} = 0,91\ \Omega$ , $C_{GE} = 220\text{ nF}$ , $T_{vj} = 125^{\circ}\text{C}$	$t_r$		0,18 0,20		$\mu\text{s}$ $\mu\text{s}$
Abschaltverzögerungszeit (ind. Last) turn-off delay time (inductive load)	$I_C = 1200\text{ A}$ , $V_{CE} = 1800\text{ V}$ $V_{GE} = \pm 15\text{ V}$ , $R_{Goff} = 1,2\ \Omega$ , $C_{GE} = 220\text{ nF}$ , $T_{vj} = 25^{\circ}\text{C}$ $V_{GE} = \pm 15\text{ V}$ , $R_{Goff} = 1,2\ \Omega$ , $C_{GE} = 220\text{ nF}$ , $T_{vj} = 125^{\circ}\text{C}$	$t_{d\text{ off}}$		1,55 1,70		$\mu\text{s}$ $\mu\text{s}$
Fallzeit (induktive Last) fall time (inductive load)	$I_C = 1200\text{ A}$ , $V_{CE} = 1800\text{ V}$ $V_{GE} = \pm 15\text{ V}$ , $R_{Goff} = 1,2\ \Omega$ , $C_{GE} = 220\text{ nF}$ , $T_{vj} = 25^{\circ}\text{C}$ $V_{GE} = \pm 15\text{ V}$ , $R_{Goff} = 1,2\ \Omega$ , $C_{GE} = 220\text{ nF}$ , $T_{vj} = 125^{\circ}\text{C}$	$t_f$		0,20 0,20		$\mu\text{s}$ $\mu\text{s}$
Einschaltverlustenergie pro Puls turn-on energy loss per pulse	$I_C = 1200\text{ A}$ , $V_{CE} = 1800\text{ V}$ , $L_S = 40\text{ nH}$ $V_{GE} = \pm 15\text{ V}$ , $R_{Gon} = 0,91\ \Omega$ , $C_{GE} = 220\text{ nF}$ , $T_{vj} = 25^{\circ}\text{C}$ $V_{GE} = \pm 15\text{ V}$ , $R_{Gon} = 0,91\ \Omega$ , $C_{GE} = 220\text{ nF}$ , $T_{vj} = 125^{\circ}\text{C}$	$E_{on}$		1400 2200		mJ mJ
Abschaltverlustenergie pro Puls turn-off energy loss per pulse	$I_C = 1200\text{ A}$ , $V_{CE} = 1800\text{ V}$ , $L_S = 40\text{ nH}$ $V_{GE} = \pm 15\text{ V}$ , $R_{Goff} = 1,2\ \Omega$ , $C_{GE} = 220\text{ nF}$ , $T_{vj} = 25^{\circ}\text{C}$ $V_{GE} = \pm 15\text{ V}$ , $R_{Goff} = 1,2\ \Omega$ , $C_{GE} = 220\text{ nF}$ , $T_{vj} = 125^{\circ}\text{C}$	$E_{off}$		1300 1550		mJ mJ
Kurzschlußverhalten SC data	$t_p \leq 10\ \mu\text{s}$ , $V_{GE} \leq 15\text{ V}$ $T_{vj} \leq 125^{\circ}\text{C}$ , $V_{CC} = 2500\text{ V}$ , $V_{CE\text{ max}} = V_{CES} - L_{s\text{CE}} \cdot di/dt$	$I_{SC}$		6000		A
Innerer Wärmewiderstand thermal resistance, junction to case	pro IGBT per IGBT	$R_{thJC}$			8,50	K/kW
Übergangs-Wärmewiderstand thermal resistance, case to heatsink	pro IGBT / per IGBT $\lambda_{\text{Paste}} = 1\text{ W}/(\text{m}\cdot\text{K})$ / $\lambda_{\text{grease}} = 1\text{ W}/(\text{m}\cdot\text{K})$	$R_{thCH}$		6,00		K/kW

prepared by: Jürgen Biermann

date of publication: 3/18/2003

approved by: Christoph Lübke

revision: 2.0

# Technische Information/technical information

IGBT-Module  
IGBT-modules

# FZ1200R33KF2C




## Vorläufige Daten preliminary data

### Diode-Wechselrichter/diode-inverter

#### Höchstzulässige Werte/maximum rated values

Periodische Spitzensperrspannung repetitive peak reverse voltage	$T_{vj} = 25^{\circ}\text{C}$ $T_{vj} = -25^{\circ}\text{C}$	$V_{RRM}$	3300 3300	V
Dauergleichstrom DC forward current		$I_F$	1200	A
Periodischer Spitzenstrom repetitive peak forward current	$t_p = 1 \text{ ms}$	$I_{FRM}$	2400	A
Grenzlastintegral $I^2t$ - value	$V_R = 0 \text{ V}$ , $t_p = 10 \text{ ms}$ , $T_{vj} = 125^{\circ}\text{C}$	$I^2t$	500	$\text{kA}^2\text{s}$
Spitzenverlustleistung maximum power dissipation	$T_{vj} = 125^{\circ}\text{C}$	$P_{ROM}$	2400	kW
Mindesteinschaltzeit minimum turn-on time		$t_{Fon \text{ min}}$	10,0	$\mu\text{s}$

#### Charakteristische Werte/characteristic values

			min.	typ.	max.	
Durchlassspannung forward voltage	$I_F = 1200 \text{ A}$ , $V_{GE} = 0 \text{ V}$ , $T_{vj} = 25^{\circ}\text{C}$ $I_F = 1200 \text{ A}$ , $V_{GE} = 0 \text{ V}$ , $T_{vj} = 125^{\circ}\text{C}$	$V_F$		2,80 2,80	3,50 3,50	V V
Rückstromspitze peak reverse recovery current	$I_F = 1200 \text{ A}$ , $-di_F/dt = 6800 \text{ A}/\mu\text{s}$ $V_R = 1800 \text{ V}$ , $V_{GE} = -15 \text{ V}$ , $T_{vj} = 25^{\circ}\text{C}$ $V_R = 1800 \text{ V}$ , $V_{GE} = -15 \text{ V}$ , $T_{vj} = 125^{\circ}\text{C}$	$I_{RM}$		1700 2000		A A
Sperrverzögerungsladung recovered charge	$I_F = 1200 \text{ A}$ , $-di_F/dt = 6800 \text{ A}/\mu\text{s}$ $V_R = 1800 \text{ V}$ , $V_{GE} = -15 \text{ V}$ , $T_{vj} = 25^{\circ}\text{C}$ $V_R = 1800 \text{ V}$ , $V_{GE} = -15 \text{ V}$ , $T_{vj} = 125^{\circ}\text{C}$	$Q_r$		710 1300		$\mu\text{C}$ $\mu\text{C}$
Abschaltenergie pro Puls reverse recovery energy	$I_F = 1200 \text{ A}$ , $-di_F/dt = 6800 \text{ A}/\mu\text{s}$ $V_R = 1800 \text{ V}$ , $V_{GE} = -15 \text{ V}$ , $T_{vj} = 25^{\circ}\text{C}$ $V_R = 1800 \text{ V}$ , $V_{GE} = -15 \text{ V}$ , $T_{vj} = 125^{\circ}\text{C}$	$E_{rec}$		735 1550		mJ mJ
Innerer Wärmewiderstand thermal resistance, junction to case	pro Diode per diode	$R_{thJC}$			17,0	K/kW
Übergangs-Wärmewiderstand thermal resistance, case to heatsink	pro Diode / per diode $\lambda_{\text{Paste}} = 1 \text{ W}/(\text{m}\cdot\text{K})$ / $\lambda_{\text{grease}} = 1 \text{ W}/(\text{m}\cdot\text{K})$	$R_{thCH}$		12,0		K/kW

prepared by: Jürgen Biermann

date of publication: 3/18/2003

approved by: Christoph Lübke

revision: 2.0

# Technische Information/technical information

IGBT-Module  
IGBT-modules

# FZ1200R33KF2C




## Vorläufige Daten preliminary data

### Modul/module

Isolations-Prüfspannung insulation test voltage	RMS, f = 50 Hz, t = 1 min	V <sub>ISOL</sub>	6,0		kV
Teilentladungs Aussetzspannung partial discharge extinction voltage	RMS, f = 50 Hz, Q <sub>PD</sub> ≥ 10 pC (acc. to IEC 1287)	V <sub>ISOL</sub>	2,6		kV
Kollektor-Emitter-Gleichsperrspannung DC stability	T <sub>vj</sub> = 25°C, 100 fit	V <sub>CE D</sub>	1800		V
Material Modulgrundplatte material of module baseplate			AlSiC		
Material für innere Isolation material for internal insulation			AlN		
Kriechstrecke creepage distance	Kontakt - Kühlkörper / terminal to heatsink Kontakt - Kontakt / terminal to terminal		32,0 32,0		mm
Luftstrecke clearance distance	Kontakt - Kühlkörper / terminal to heatsink Kontakt - Kontakt / terminal to terminal		19,0 19,0		mm
Vergleichszahl der Kriechwegbildung comparative tracking index		CTI	> 400		
			min.	typ.	max.
Übergangs-Wärmewiderstand thermal resistance, case to heatsink	pro Modul / per module λ <sub>Paste</sub> = 1 W/(m <sup>2</sup> K) / λ <sub>grease</sub> = 1 W/(m <sup>2</sup> K)	R <sub>thCH</sub>		4,00	K/kW
Modulinduktivität stray inductance module		L <sub>sCE</sub>		10	nH
Modulleitungswiderstand, Anschlüsse - Chip module lead resistance, terminals - chip	T <sub>C</sub> = 25°C, pro Zweig / per arm	R <sub>CC-EE'</sub>		0,12	mΩ
Höchstzulässige Sperrschichttemperatur maximum junction temperature		T <sub>vj max</sub>			150 °C
Temperatur im Schaltbetrieb temperature under switching conditions		T <sub>vj op</sub>	-40		125 °C
Lagertemperatur storage temperature		T <sub>stg</sub>	-40		125 °C
Anzugsdrehmoment f. mech. Befestigung mounting torque	Schraube / screw M6	M	4,25	-	5,75 Nm
Anzugsdrehmoment f. elektr. Anschlüsse terminal connection torque	Schraube / screw M4 Schraube / screw M8	M	1,8 8,0	- -	2,1 10 Nm
Gewicht weight		G		1500	g

**Mit dieser technischen Information werden Halbleiterbauelemente spezifiziert, jedoch keine Eigenschaften zugesichert. Sie gilt in Verbindung mit den zugehörigen technischen Erläuterungen.**

**This technical information specifies semiconductor devices but guarantees no characteristics. It is valid with the appropriate technical explanations.**

prepared by: Jürgen Biermann

date of publication: 3/18/2003

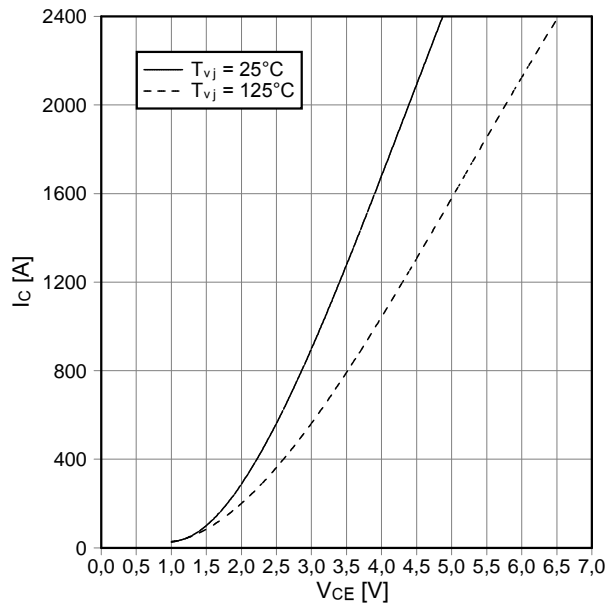
approved by: Christoph Lübke

revision: 2.0

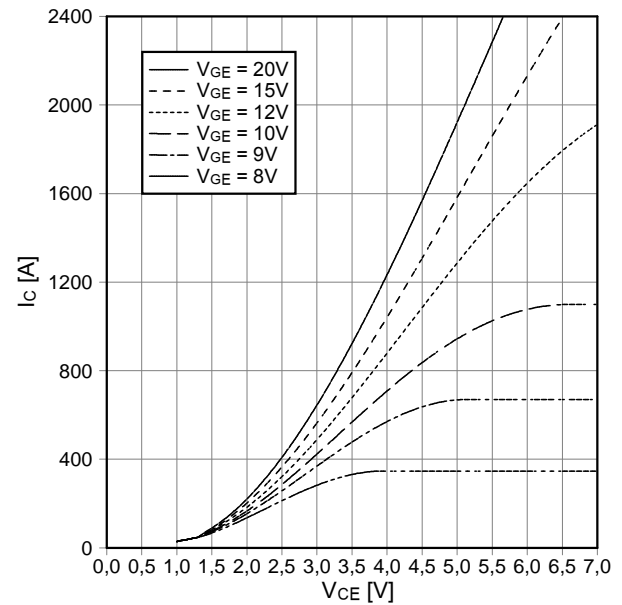


Vorläufige Daten  
preliminary data

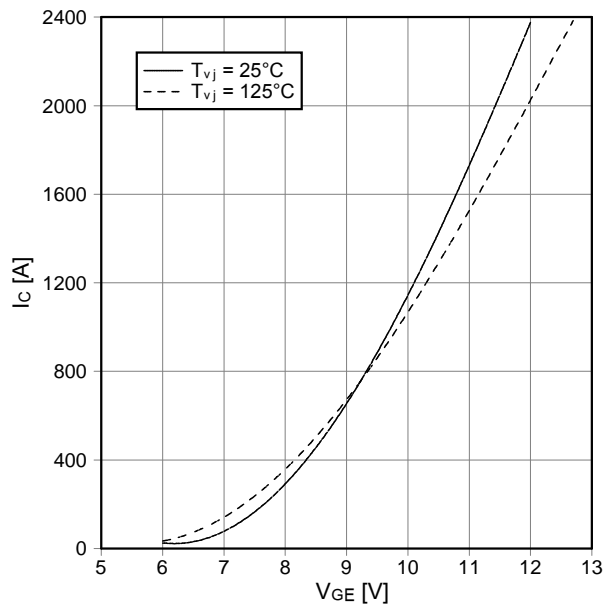
Ausgangskennlinie IGBT-Wechselr. (typisch)  
output characteristic IGBT-inverter (typical)  
 $I_c = f(V_{CE})$   
 $V_{GE} = 15\text{ V}$



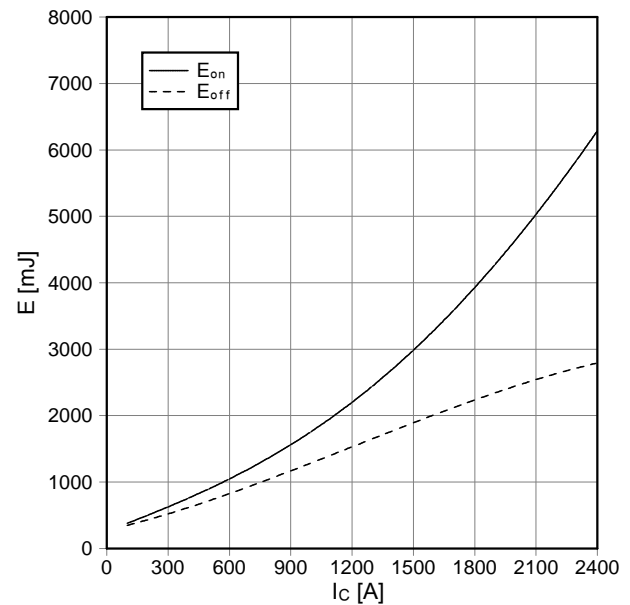
Ausgangskennlinienfeld IGBT-Wechselr. (typisch)  
output characteristic IGBT-inverter (typical)  
 $I_c = f(V_{CE})$   
 $T_{vj} = 125^\circ\text{C}$



Übertragungscharakteristik IGBT-Wechselr. (typisch)  
transfer characteristic IGBT-inverter (typical)  
 $I_c = f(V_{GE})$   
 $V_{CE} = 20\text{ V}$



Schaltverluste IGBT-Wechselr. (typisch)  
switching losses IGBT-inverter (typical)  
 $E_{on} = f(I_c)$ ,  $E_{off} = f(I_c)$   
 $V_{GE} = \pm 15\text{ V}$ ,  $R_{Gon} = 0,91\ \Omega$ ,  $R_{Goff} = 1,2\ \Omega$ ,  $V_{CE} = 1800\text{ V}$ ,  $T_{vj} = 125^\circ\text{C}$ ,  $C_{GE} = 220\text{ nF}$

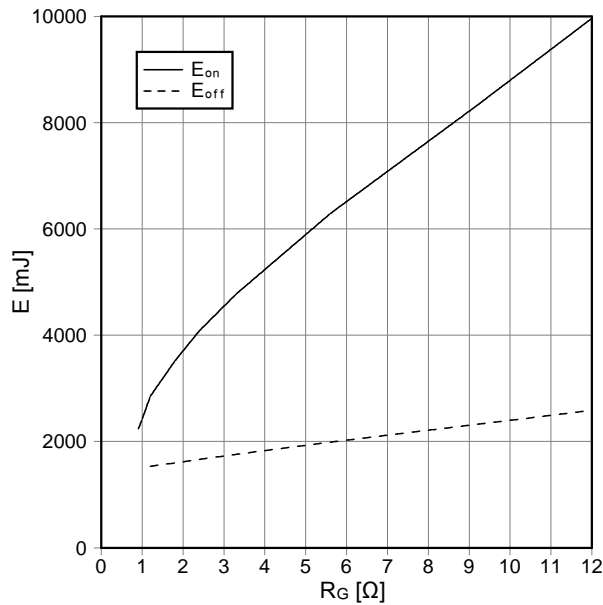


prepared by: Jürgen Biermann	date of publication: 3/18/2003
approved by: Christoph Lübke	revision: 2.0

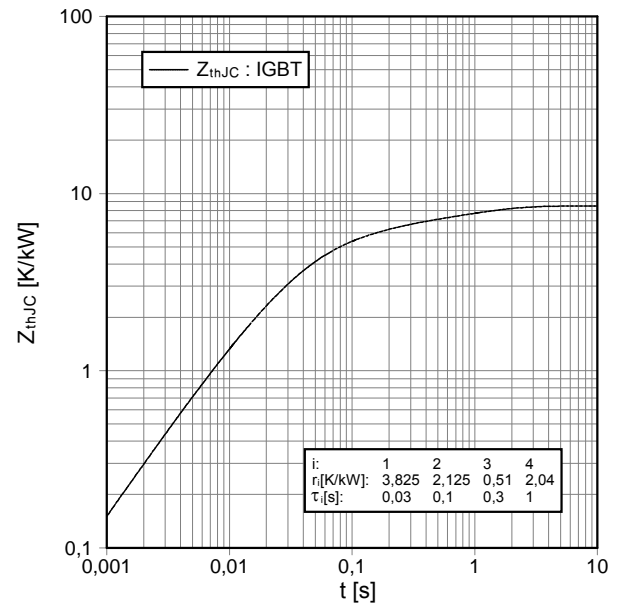


Vorläufige Daten  
preliminary data

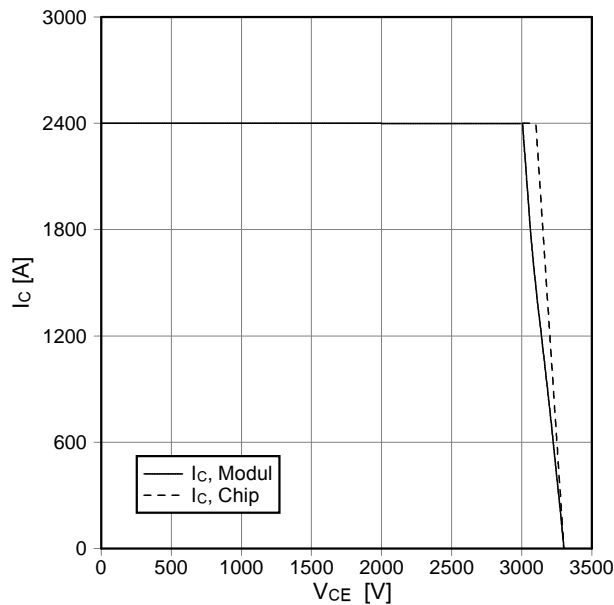
Schaltverluste IGBT-Wechselr. (typisch)  
switching losses IGBT-Inverter (typical)  
 $E_{on} = f(R_G)$ ,  $E_{off} = f(R_G)$   
 $V_{GE} = \pm 15\text{ V}$ ,  $I_C = 1200\text{ A}$ ,  $V_{CE} = 1800\text{ V}$ ,  $T_{vj} = 125^\circ\text{C}$ ,  
 $C_{GE} = 220\text{ nF}$



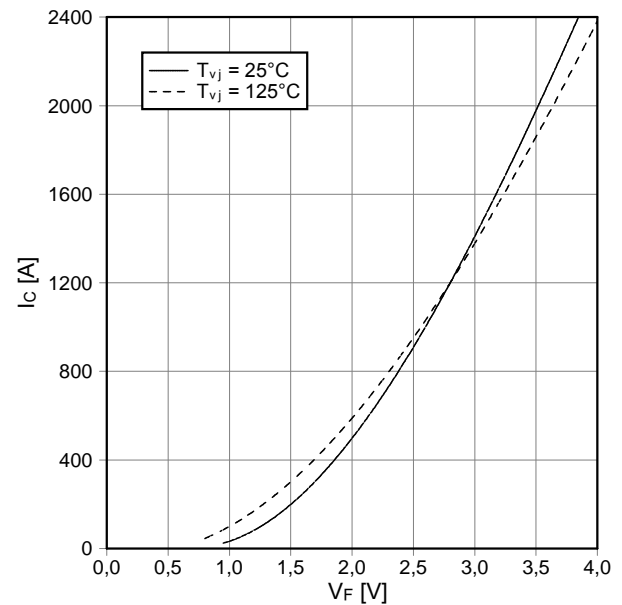
Transienter Wärmewiderstand IGBT-Wechselr.  
transient thermal impedance IGBT-inverter  
 $Z_{thJC} = f(t)$



Sicherer Rückwärts-Arbeitsbereich IGBT-Wr. (RBSOA)  
reverse bias safe operating area IGBT-inv. (RBSOA)  
 $I_C = f(V_{CE})$   
 $V_{GE} = \pm 15\text{ V}$ ,  $R_{Goff} = 1,2\ \Omega$ ,  $T_{vj} = 125^\circ\text{C}$ ,  $C_{GE} = 220\text{ nF}$



Durchlaßkennlinie der Diode-Wechselr. (typisch)  
forward characteristic of diode-inverter (typical)  
 $I_F = f(V_F)$



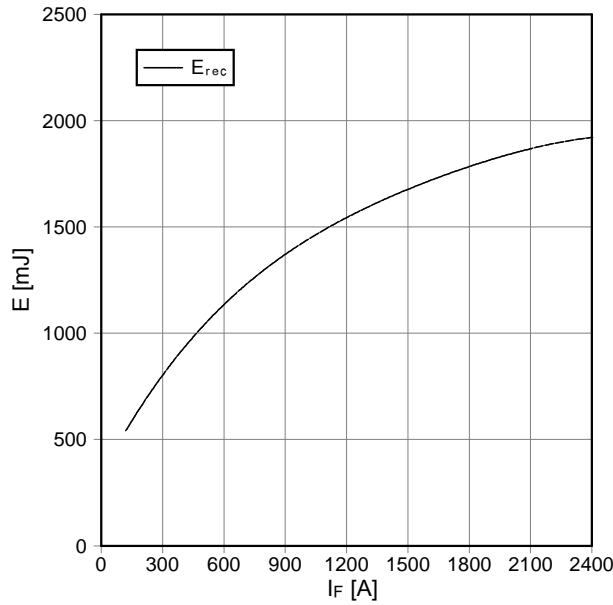
prepared by: Jürgen Biermann	date of publication: 3/18/2003
approved by: Christoph Lübke	revision: 2.0



Vorläufige Daten  
preliminary data

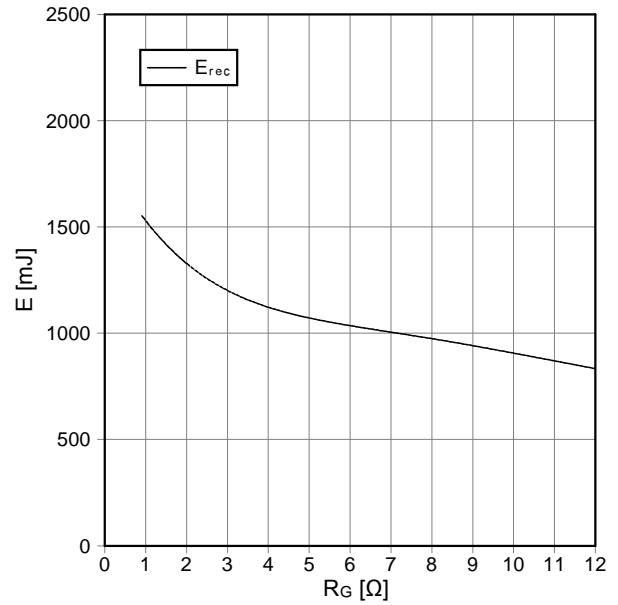
Schaltverluste Diode-Wechselr. (typisch)  
switching losses diode-inverter (typical)

$E_{rec} = f(I_F)$   
 $R_{Gon} = 0,91 \Omega$ ,  $V_{CE} = 1800 V$ ,  $T_{vj} = 125^\circ C$



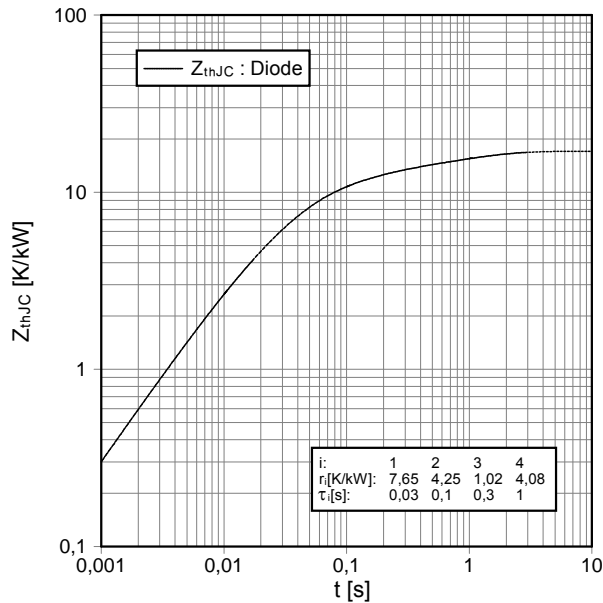
Schaltverluste Diode-Wechselr. (typisch)  
switching losses diode-inverter (typical)

$E_{rec} = f(R_G)$   
 $I_F = 1200 A$ ,  $V_{CE} = 1800 V$ ,  $T_{vj} = 125^\circ C$



Transienter Wärmewiderstand Diode-Wechselr.  
transient thermal impedance diode-inverter

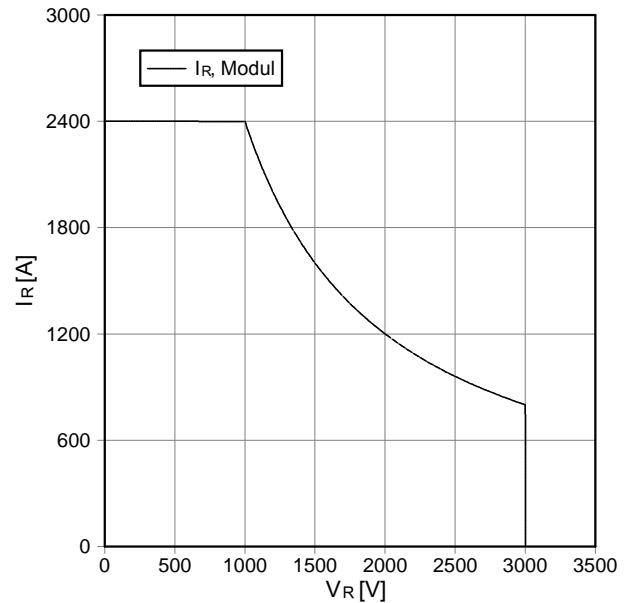
$Z_{thJC} = f(t)$



i:	1	2	3	4
r_i [K/kW]:	7,65	4,25	1,02	4,08
τ_i [s]:	0,03	0,1	0,3	1

Sicherer Arbeitsbereich Diode-Wechselr. (SOA)  
safe operation area diode-inverter (SOA)

$I_R = f(V_R)$   
 $T_{vj} = 125^\circ C$

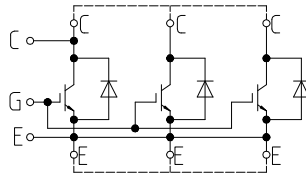


prepared by: Jürgen Biermann	date of publication: 3/18/2003
approved by: Christoph Lübke	revision: 2.0



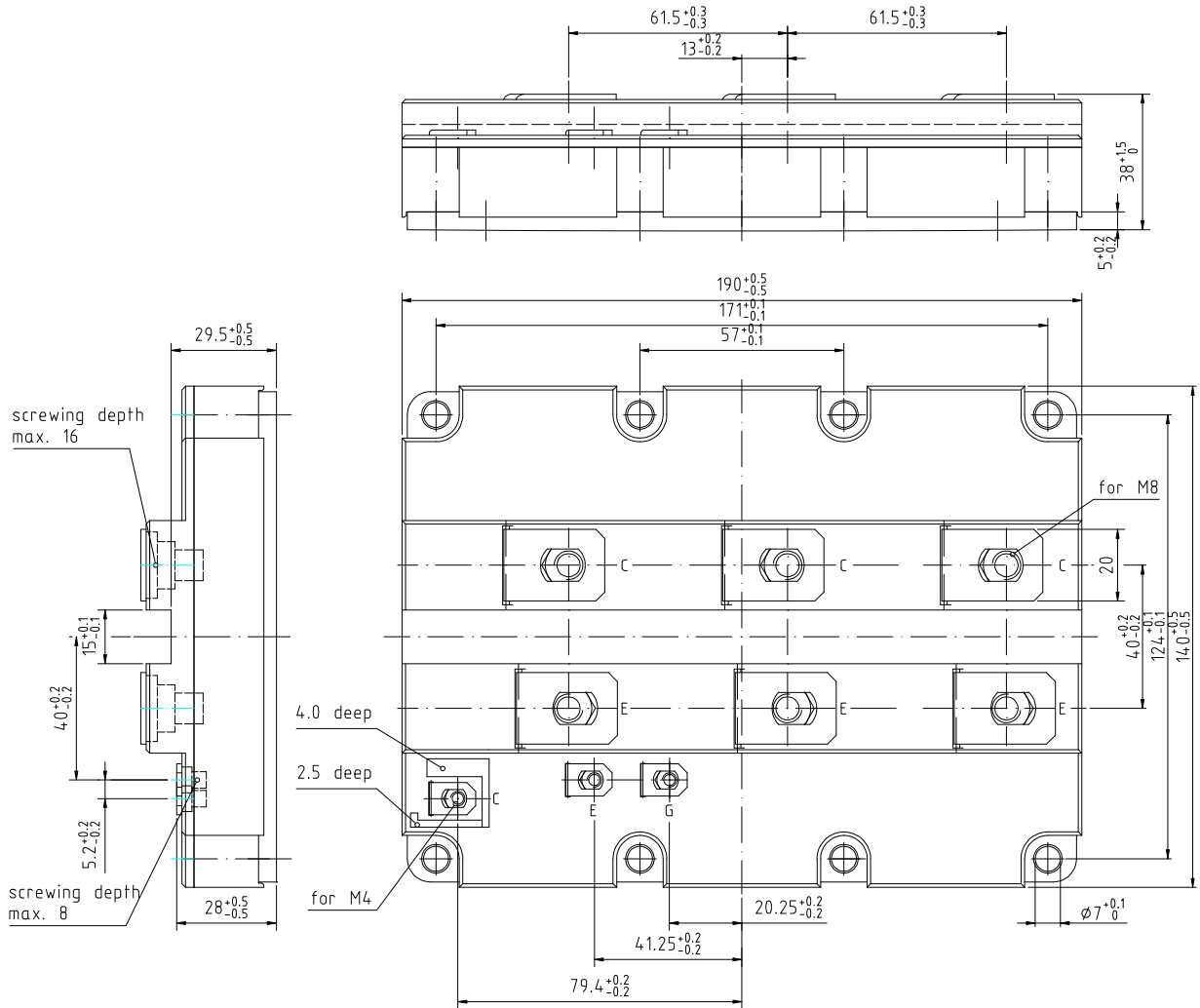
Vorläufige Daten  
preliminary data

Schaltplan/circuit diagram



external connection  
to be done

Gehäuseabmessungen/package outlines



prepared by: Jürgen Biermann	date of publication: 3/18/2003
approved by: Christoph Lübke	revision: 2.0