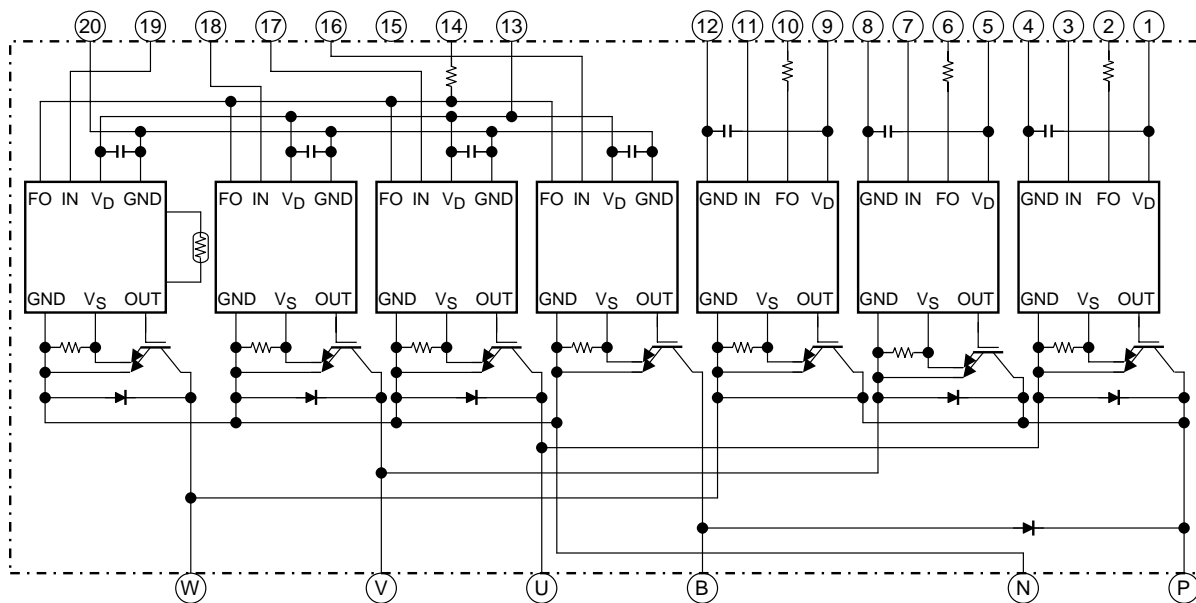


# MIG50Q7CSB1X (1200V/50A 7in1)

High Power Switching Applications  
 Motor Control Applications

- Integrates inverter, brake power circuits and control circuits (IGBT drive units, protection units for short-circuit current, over current, under voltage and over temperature) in one package.
- The electrodes are isolated from case.
- $V_{CE(sat)} = 2.2\text{ V (typ.)}$
- UL recognized File No. E87989
- Weight: 278 g (typ.)

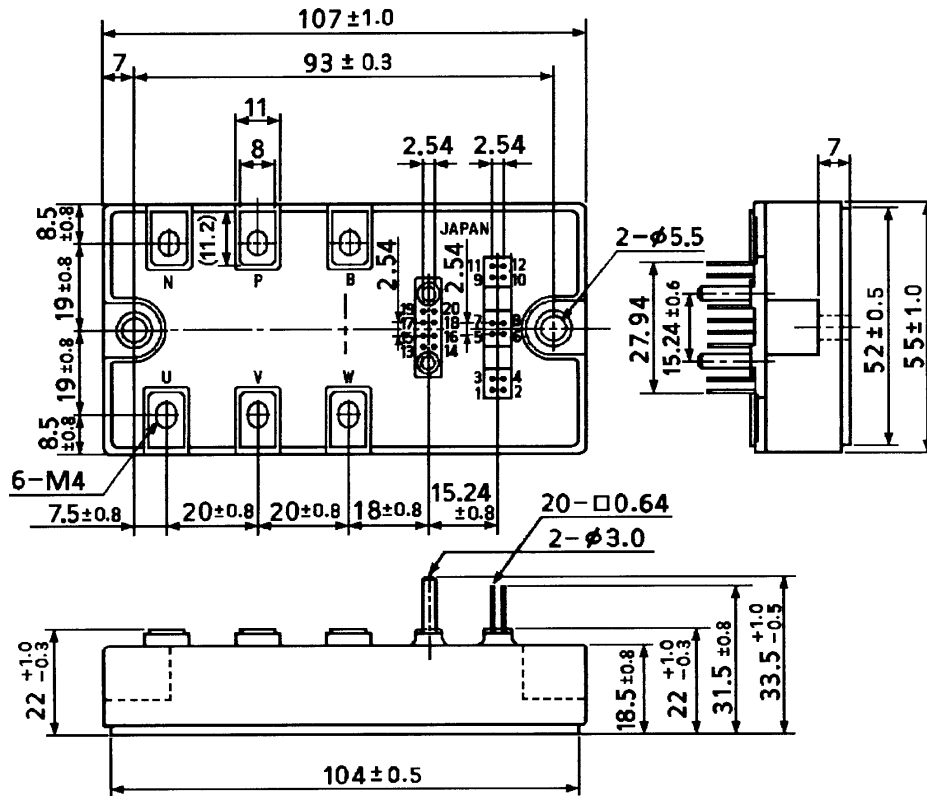
## Equivalent Circuit



1. $V_D$ (U)	2. FO (U)	3. IN (U)	4. GND (U)	5. $V_D$ (V)	6. FO (V)	7. IN (V)
8. GND (V)	9. $V_D$ (W)	10. FO (W)	11. IN (W)	12. GND (W)	13. $V_D$ (L)	14. FO (L)
15. Open	16. IN (B)	17. IN (X)	18. IN (Y)	19. IN (Z)	20. GND (L)	

## Package Dimensions: TOSHIBA 2-108G1A

Unit: mm



- |               |             |              |            |              |             |
|---------------|-------------|--------------|------------|--------------|-------------|
| 1. $V_D$ (U)  | 2. FO (U)   | 3. IN (U)    | 4. GND (U) | 5. $V_D$ (V) | 6. FO (V)   |
| 7. IN (V)     | 8. GND (V)  | 9. $V_D$ (W) | 10. FO (W) | 11. IN (W)   | 12. GND (W) |
| 13. $V_D$ (L) | 14. FO (L)  | 15. Open     | 16. IN (B) | 17. IN (X)   | 18. IN (Y)  |
| 19. IN (Z)    | 20. GND (L) |              |            |              |             |



















