

SHINDENGEN

Schottky Rectifiers (SBD)

Modules

D180SC4M

40V 180A

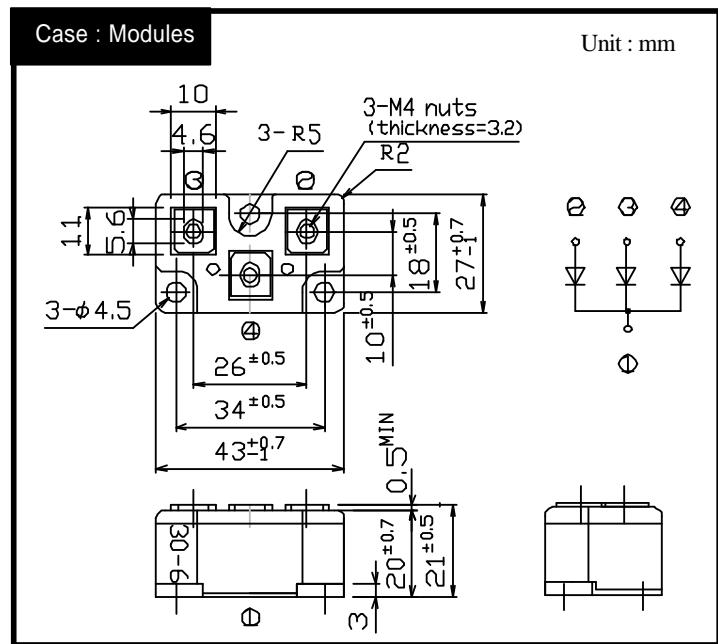
FEATURES

- High capacity modules
- Low VF
- Small jc

APPLICATION

- Big switching power supply
- DC/DC converter
- Mainframe
- IC tester

OUTLINE DIMENSIONS



RATINGS

Absolute Maximum Ratings (If not specified Tc=25 °C)

Item	Symbol	Conditions	Ratings	Units
Storage Temperature	T _{stg}		-40 ~ 125	
Operating Junction Temperature	T _j		125	
Maximum Reverse Voltage	V _{RM}		40	V
Repetitive Peak Surge Reverse Voltage	V _{RRSM}	Pulse width 100ms, duty 1/100	48	V
Average Rectified Forward Current	I _O	50Hz sine wave, R-load, Rating for each diode I _o /3, T _c =83	180	A
Peak Surge Forward Current	I _{FSM}	50Hz sine wave, Non-repetitive 1cycle peak value, Rating of per diode T _j =125	800	A
Mounting Torque	TOR		1.7	N·m

Electrical Characteristics (If not specified Tc=25 °C)

Item	Symbol	Conditions	Ratings	Units
Forward Voltage	V _F	I _F =60A, Pulse measurement, Rating of per diode	Max.0.58	V
Reverse Current	I _R	V _R =V _{RM} , Pulse measurement, Rating of per diode	Max.40	mA
Junction Capacitance	C _j	f=1MHz, V _R =10V, Rating of per diode	TYP 2.1	nF
Thermal Resistance	j-c	junction to case	Max.0.25	/W
	c-f	case to heatsink, Mounting torque = 1.7N·m	Max.0.12	