

256K x 16 Static RAM

Features

- **High Speed**
 - 55 ns and 70 ns availability
- **Voltage range:**
 - CY62147CV25: 2.2V–2.7V
 - CY62147CV30: 2.7V–3.3V
 - CY62147CV33: 3.0V–3.6V
- **Pin Compatible with CY62147V**
- **Ultra-low active power**
 - Typical active current: 1.5 mA @ f = 1 MHz
 - Typical active current: 5.5 mA @ f = f_{max} (70 ns speed)
- **Low standby power**
- **Easy memory expansion with \overline{CE} and \overline{OE} features**
- **Automatic power-down when deselected**
- **CMOS for optimum speed/power**

Functional Description

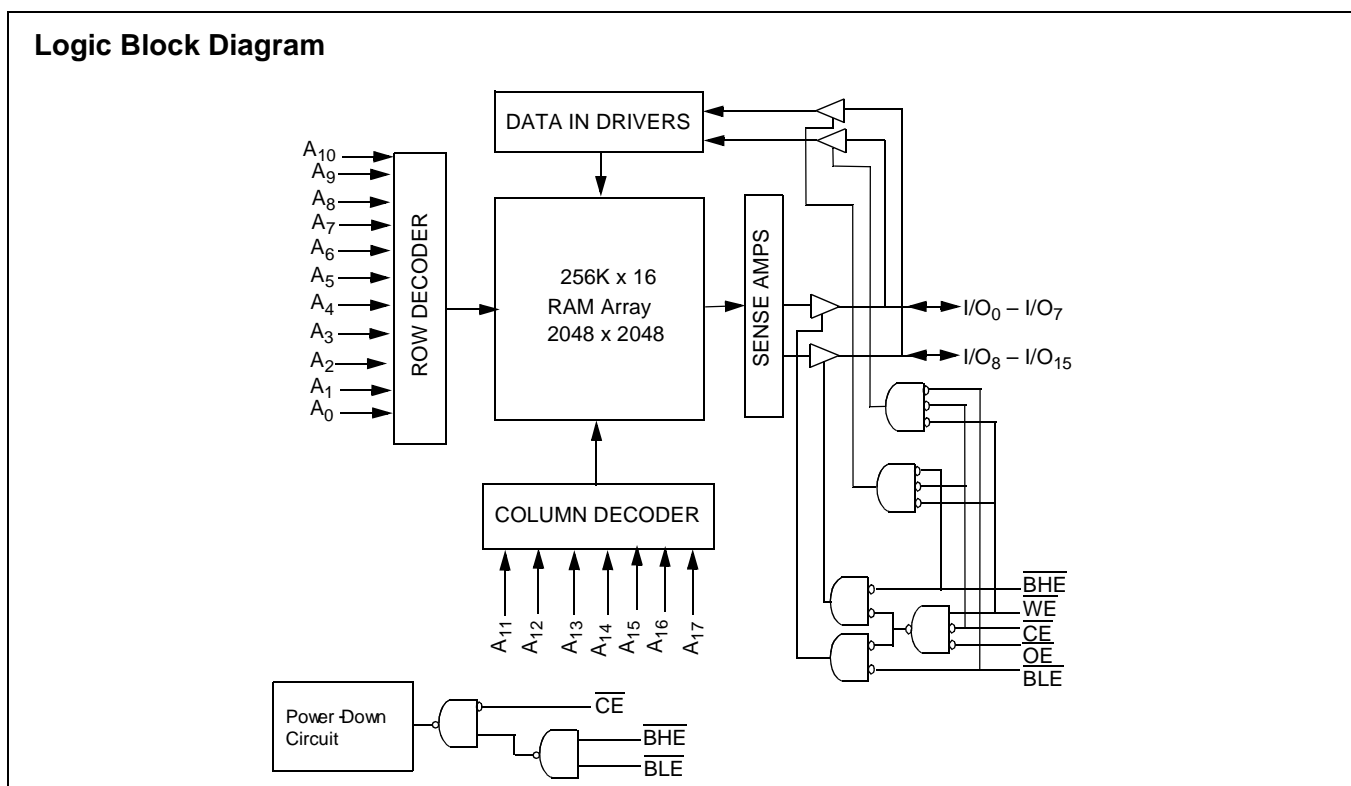
The CY62147CV25/30/33 are high-performance CMOS static RAMs organized as 256K words by 16 bits. These devices feature advanced circuit design to provide ultra-low active current. This is ideal for providing More Battery Life™ (MoBL™) in portable applications such as cellular telephones. The devices also have an automatic power-down feature that signifi-

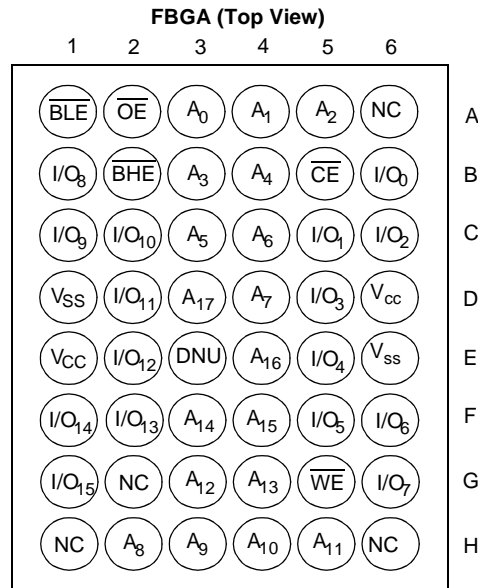
cantly reduces power consumption by 80% when addresses are not toggling. The device can also be put into standby mode reducing power consumption by more than 99% when deselected (\overline{CE} HIGH or both \overline{BLE} and \overline{BHE} are HIGH). The input/output pins (I/O₀ through I/O₁₅) are placed in a high-impedance state when: deselected (\overline{CE} HIGH), outputs are disabled (\overline{OE} HIGH), both Byte High Enable and Byte Low Enable are disabled (\overline{BHE} , \overline{BLE} HIGH), or during a write operation (\overline{CE} LOW and \overline{WE} LOW).

Writing to the device is accomplished by taking Chip Enable (\overline{CE}) and Write Enable (\overline{WE}) inputs LOW. If Byte Low Enable (\overline{BLE}) is LOW, then data from I/O pins (I/O₀ through I/O₇), is written into the location specified on the address pins (A₀ through A₁₇). If Byte High Enable (\overline{BHE}) is LOW, then data from I/O pins (I/O₈ through I/O₁₅) is written into the location specified on the address pins (A₀ through A₁₇).

Reading from the device is accomplished by taking Chip Enable (\overline{CE}) and Output Enable (\overline{OE}) LOW while forcing the Write Enable (\overline{WE}) HIGH. If Byte Low Enable (\overline{BLE}) is LOW, then data from the memory location specified by the address pins will appear on I/O₀ to I/O₇. If Byte High Enable (\overline{BHE}) is LOW, then data from memory will appear on I/O₈ to I/O₁₅. See the truth table at the back of this data sheet for a complete description of read and write modes.

The CY62147CV25/30/33 are available in a 48-ball FBGA package.



Pin Configuration^[1, 2]

Maximum Ratings

(Above which the useful life may be impaired. For user guidelines, not tested.)

Storage Temperature -65°C to +150°C
 Ambient Temperature with Power Applied..... -55°C to +125°C
 Supply Voltage to Ground Potential ... -0.5V to V_{CCmax} + 0.5V
 DC Voltage Applied to Outputs in High Z State^[3] -0.5V to V_{CC} + 0.3V
 DC Input Voltage^[3] -0.5V to V_{CC} + 0.3V
 Output Current into Outputs (LOW) 20 mA

Static Discharge Voltage >2001V (per MIL-STD-883, Method 3015)

Latch-Up Current..... >200 mA

Operating Range

| Device | Range | Ambient Temperature | V _{CC} |
|-------------|------------|---------------------|-----------------|
| CY62147CV25 | Industrial | -40°C to +85°C | 2.2V to 2.7V |
| CY62147CV30 | | | 2.7V to 3.3V |
| CY62147CV33 | | | 3.0V to 3.6V |

Product Portfolio

| Product | V _{CC} Range | | | Speed | Power Dissipation (Industrial) | | | | | |
|-------------|-----------------------|--------------------------------------|-----------------------|-------|--------------------------------|------|----------------------|-------|-----------------------------|-------|
| | | | | | Operating, I _{CC} | | | | Standby (I _{SB2}) | |
| | V _{CC(min.)} | V _{CC(typ.)} ^[4] | V _{CC(max.)} | | f = 1 MHz | | f = f _{max} | | Standby (I _{SB2}) | |
| | | | | | Typ. ^[4] | Max. | Typ. ^[4] | Max. | Typ. ^[4] | Max. |
| CY62147CV25 | 2.2V | 2.5V | 2.7V | 55 ns | 1.5 mA | 3 mA | 7 mA | 15 mA | 5 µA | 15 µA |
| | | | | 70 ns | 1.5 mA | 3 mA | 5.5 mA | 12 mA | | |
| CY62147CV30 | 2.7V | 3.0V | 3.3V | 55 ns | 1.5 mA | 3 mA | 7 mA | 15 mA | 7 µA | 15 µA |
| | | | | 70 ns | 1.5 mA | 3 mA | 5.5 mA | 12 mA | | |
| CY62147CV33 | 3.0V | 3.3V | 3.6V | 55 ns | 1.5 mA | 3 mA | 7 mA | 15 mA | 8 µA | 20 µA |
| | | | | 70 ns | 1.5 mA | 3 mA | 5.5 mA | 12 mA | | |

Notes:

- NC pins are not connected to the die.
- E3 (DNU) can be left as NC or V_{SS} to ensure proper application.
- V_{IL(min.)} = -2.0V for pulse durations less than 20 ns.
- Typical values are included for reference only and are not guaranteed or tested. Typical values are measured at V_{CC} = V_{CC(typ.)}, T_A = 25°C.

Electrical Characteristics Over the Operating Range

| Parameter | Description | Test Conditions | | CY62147CV25-55 | | | CY62147CV25-70 | | | Unit |
|------------------|--|--|--|----------------|---------------------|------------------------|----------------|---------------------|------------------------|------|
| | | | | Min. | Typ. ^[4] | Max. | Min. | Typ. ^[4] | Max. | |
| V _{OH} | Output HIGH Voltage | I _{OH} = -0.1 mA | V _{CC} = 2.2V | 2.0 | | | 2.0 | | | V |
| V _{OL} | Output LOW Voltage | I _{OL} = 0.1 mA | V _{CC} = 2.2V | | | 0.4 | | | 0.4 | V |
| V _{IH} | Input HIGH Voltage | | | 1.8 | | V _{CC} + 0.3V | 1.8 | | V _{CC} + 0.3V | V |
| V _{IL} | Input LOW Voltage | | | -0.3 | | 0.6 | -0.3 | | 0.6 | V |
| I _{IX} | Input Leakage Current | GND ≤ V _I ≤ V _{CC} | | -1 | | +1 | -1 | | +1 | μA |
| I _{OZ} | Output Leakage Current | GND ≤ V _O ≤ V _{CC} , Output Disabled | | -1 | | +1 | -1 | | +1 | μA |
| I _{CC} | V _{CC} Operating Supply Current | f = f _{MAX} = 1/t _{RC} | V _{CC} = 2.7V I _{OUT} = 0 mA CMOS Levels | | 7 | 15 | | 5.5 | 12 | mA |
| | | f = 1 MHz | | | 1.5 | 3 | | 1.5 | 3 | |
| I _{SB1} | Automatic CE Power-Down Current— CMOS Inputs | $\overline{CE} \geq V_{CC} - 0.2V$ $V_{IN} \geq V_{CC} - 0.2V$ or $V_{IN} \leq 0.2V$, $f = f_{max}$ (Address and Data Only), $f=0$ (OE,WE,BHE and BLE) | | | 5 | 15 | | 5 | 15 | μA |
| I _{SB2} | Automatic CE Power-Down Current— CMOS Inputs | $\overline{CE} \geq V_{CC} - 0.2V$ $V_{IN} \geq V_{CC} - 0.2V$ or $V_{IN} \leq 0.2V$, $f = 0$, V _{CC} = 2.7V | | | | | | | | |

| Parameter | Description | Test Conditions | | CY62147CV30-55 | | | CY62147CV30-70 | | | Unit |
|------------------|--|--|--|----------------|---------------------|------------------------|----------------|---------------------|------------------------|------|
| | | | | Min. | Typ. ^[4] | Max. | Min. | Typ. ^[4] | Max. | |
| V _{OH} | Output HIGH Voltage | I _{OH} = -1.0 mA | V _{CC} = 2.7V | 2.4 | | | 2.4 | | | V |
| V _{OL} | Output LOW Voltage | I _{OL} = 2.1 mA | V _{CC} = 2.7V | | | 0.4 | | | 0.4 | V |
| V _{IH} | Input HIGH Voltage | | | 2.2 | | V _{CC} + 0.3V | 2.2 | | V _{CC} + 0.3V | V |
| V _{IL} | Input LOW Voltage | | | -0.3 | | 0.8 | -0.3 | | 0.8 | V |
| I _{IX} | Input Leakage Current | GND ≤ V _I ≤ V _{CC} | | -1 | | +1 | -1 | | +1 | μA |
| I _{OZ} | Output Leakage Current | GND ≤ V _O ≤ V _{CC} , Output Disabled | | -1 | | +1 | -1 | | +1 | μA |
| I _{CC} | V _{CC} Operating Supply Current | f = f _{MAX} = 1/t _{RC} | V _{CC} = 3.3V I _{OUT} = 0 mA CMOS Levels | | 7 | 15 | | 5.5 | 12 | mA |
| | | f = 1 MHz | | | 1.5 | 3 | | 1.5 | 3 | |
| I _{SB1} | Automatic CE Power-Down Current— CMOS Inputs | $\overline{CE} \geq V_{CC} - 0.2V$ $V_{IN} \geq V_{CC} - 0.2V$ or $V_{IN} \leq 0.2V$, $f = f_{max}$ (Address and Data Only), $f=0$ (OE,WE,BHE and BLE) | | | 7 | 15 | | 7 | 15 | μA |
| I _{SB2} | Automatic CE Power-Down Current— CMOS Inputs | $\overline{CE} \geq V_{CC} - 0.2V$ $V_{IN} \geq V_{CC} - 0.2V$ or $V_{IN} \leq 0.2V$, $f = 0$, V _{CC} = 3.3V | | | | | | | | |

Electrical Characteristics Over the Operating Range (continued)

| Parameter | Description | Test Conditions | CY62147CV33-55 | | | CY62147CV33-70 | | | Unit |
|------------------|--|---|----------------|---------------------|------------------------|----------------|---------------------|------------------------|------|
| | | | Min. | Typ. ^[4] | Max. | Min. | Typ. ^[4] | Max. | |
| V _{OH} | Output HIGH Voltage | I _{OH} = -1.0 mA V _{CC} = 3.0V | 2.4 | | | 2.4 | | | V |
| V _{OL} | Output LOW Voltage | I _{OL} = 2.1 mA V _{CC} = 3.0V | | | 0.4 | | | 0.4 | V |
| V _{IH} | Input HIGH Voltage | | 2.2 | | V _{CC} + 0.3V | 2.2 | | V _{CC} + 0.3V | V |
| V _{IL} | Input LOW Voltage | | -0.3 | | 0.8 | -0.3 | | 0.8 | V |
| I _{Ix} | Input Leakage Current | GND ≤ V _I ≤ V _{CC} | -1 | | +1 | -1 | | +1 | μA |
| I _{OZ} | Output Leakage Current | GND ≤ V _O ≤ V _{CC} , Output Disabled | -1 | | +1 | -1 | | +1 | μA |
| I _{CC} | V _{CC} Operating Supply Current | f = f _{MAX} = 1/t _{RC} V _{CC} = 3.6V I _{OUT} = 0 mA CMOS Levels | | 7 | 15 | | 5.5 | 12 | mA |
| | | f = 1 MHz | | 1.5 | 3 | | 1.5 | 3 | |
| I _{SB1} | Automatic CE Power-Down Current— CMOS Inputs | $\overline{CE} \geq V_{CC} - 0.2V$ $V_{IN} \geq V_{CC} - 0.2V$ or $V_{IN} \leq 0.2V$, f = f _{max} (Address and Data Only), f=0 (OE, WE, BHE and BLE) | | 8 | 20 | | 8 | 20 | μA |
| I _{SB2} | Automatic CE Power-Down Current— CMOS Inputs | $\overline{CE} \geq V_{CC} - 0.2V$ $V_{IN} \geq V_{CC} - 0.2V$ or $V_{IN} \leq 0.2V$, f = 0, V _{CC} = 3.6V | | | | | | | |

Capacitance^[5]

| Parameter | Description | Test Conditions | Max. | Unit |
|------------------|--------------------|---|------|------|
| C _{IN} | Input Capacitance | T _A = 25°C, f = 1 MHz, V _{CC} = V _{CC} (typ.) | 6 | pF |
| C _{OUT} | Output Capacitance | | 8 | pF |

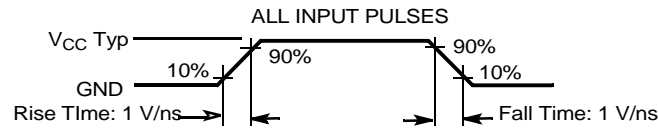
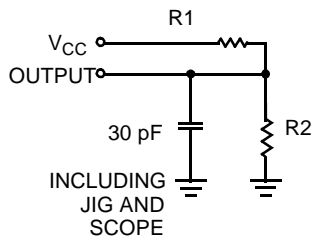
Thermal Resistance

| Description | Test Conditions | Symbol | BGA | Unit |
|---|--|-----------------|-----|------|
| Thermal Resistance (Junction to Ambient) ^[5] | Still Air, soldered on a 3 x 4.5 inch, two-layer printed circuit board | θ _{JA} | 55 | °C/W |
| Thermal Resistance (Junction to Case) ^[5] | | θ _{JC} | 16 | °C/W |

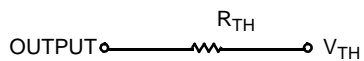
Note:

5. Tested initially and after any design or process changes that may affect these parameters.

AC Test Loads and Waveforms



Equivalent to: THÉVENIN EQUIVALENT

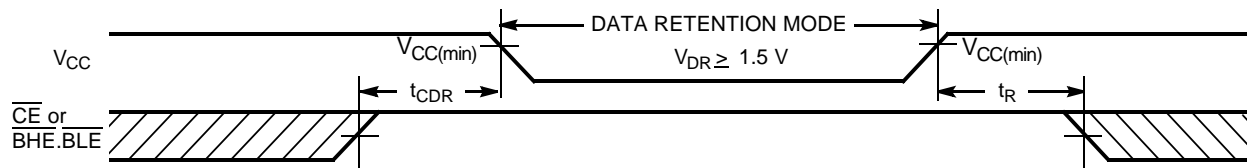


| Parameters | 2.5V | 3.0V | 3.3V | Unit |
|-----------------|------|-------|-------|-------|
| R1 | 16.6 | 1.105 | 1.216 | KΩ |
| R2 | 15.4 | 1.550 | 1.374 | KΩ |
| R _{TH} | 8 | 0.645 | 0.645 | KΩ |
| V _{TH} | 1.20 | 1.75 | 1.75 | Volts |

Data Retention Characteristics (Over the Operating Range)

| Parameter | Description | Conditions | Min. | Typ. ^[4] | Max. | Unit |
|---------------------------------|--------------------------------------|--|-----------------|---------------------|--------------------|------|
| V _{DR} | V _{CC} for Data Retention | | 1.5 | | V _{CCmax} | V |
| I _{CCDR} | Data Retention Current | V _{CC} = 1.5V CE ≥ V _{CC} - 0.2V, V _{IN} ≥ V _{CC} - 0.2V or V _{IN} ≤ 0.2V | | 3 | 10 | μA |
| t _{CDR} ^[5] | Chip Deselect to Data Retention Time | | 0 | | | ns |
| t _R ^[6] | Operation Recovery Time | | t _{RC} | | | ns |

Data Retention Waveform^[7]



Note:

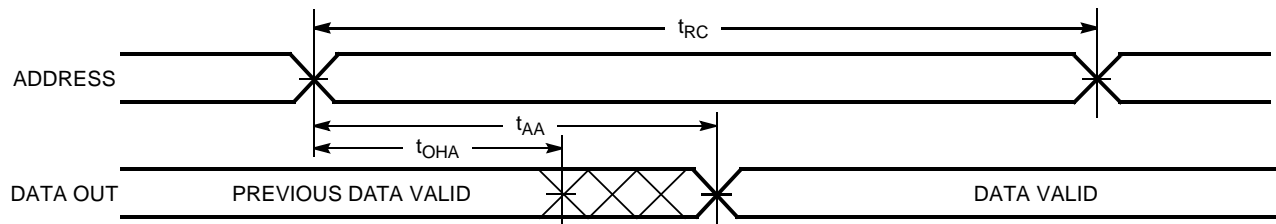
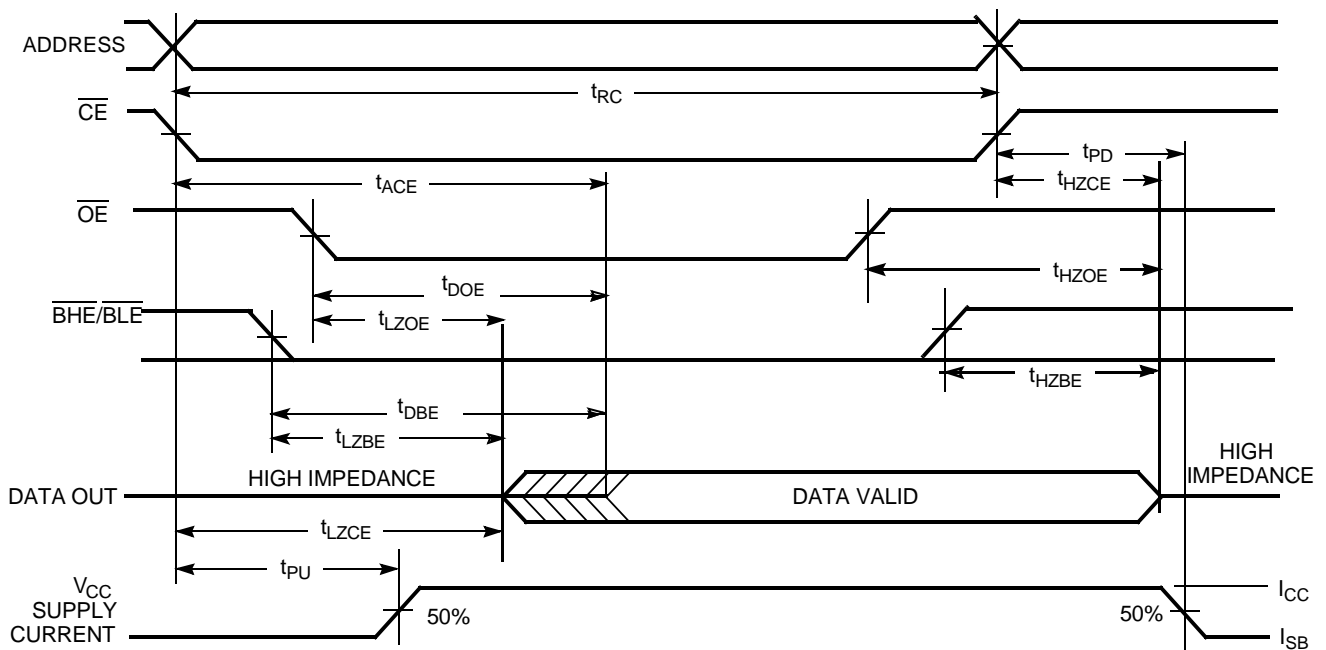
- Full Device AC operation requires linear V_{CC} ramp from V_{DR} to V_{CC(min.)} > 100μs or stable at V_{CC(min.)} > 100 μs.
- BHE.BLE is the AND of both BHE and BLE. Chip can be deselected by either disabling the chip enable signals or by disabling both BHE and BLE.

Switching Characteristics Over the Operating Range^[8]

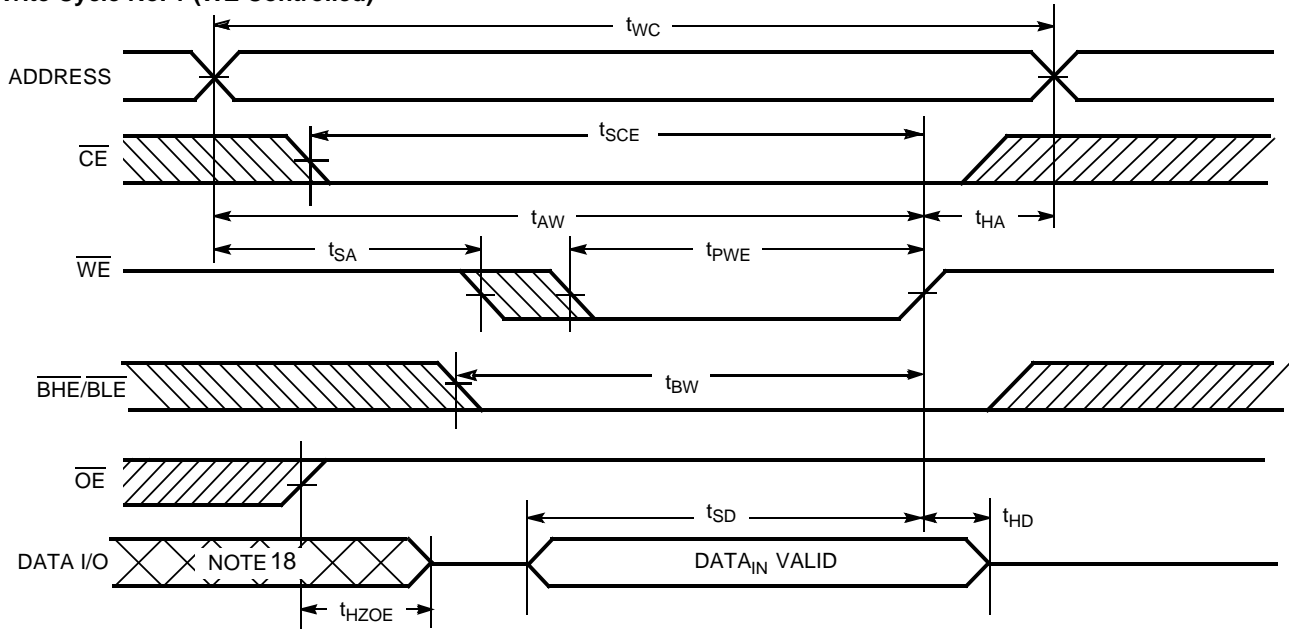
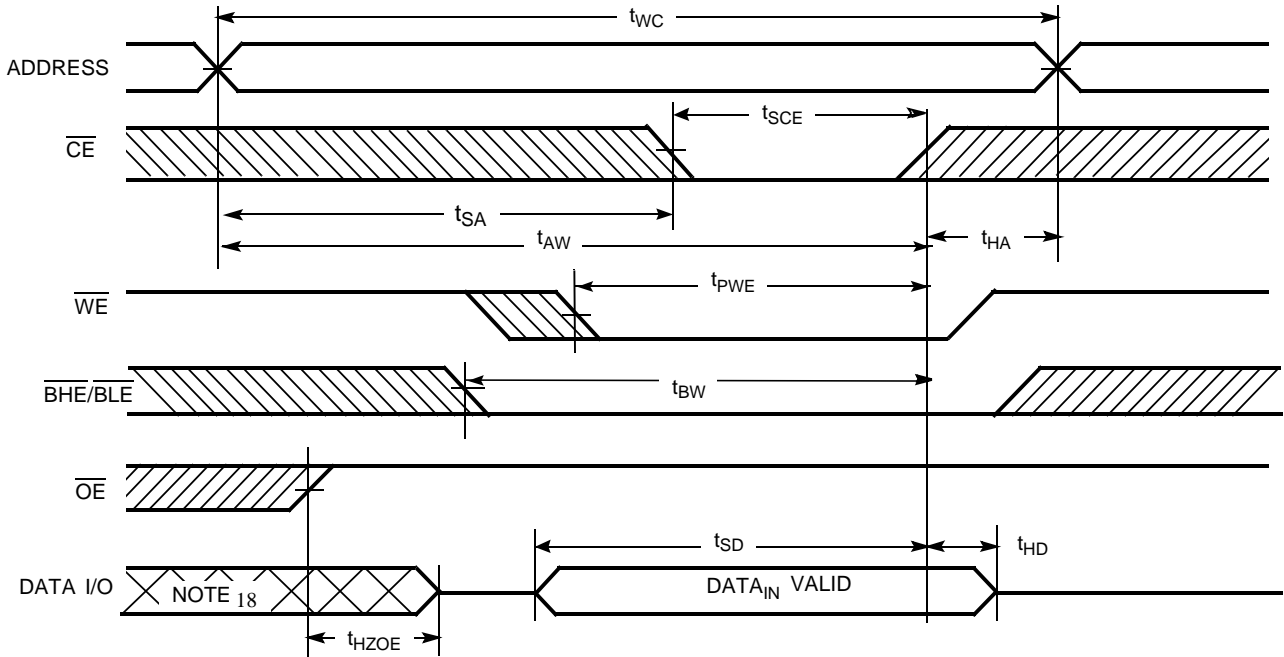
| Parameter | Description | 55 ns | | 70 ns | | Unit |
|-----------------------------------|---|-------|-----|-------|-----|------|
| | | Min | Max | Min | Max | |
| READ CYCLE | | | | | | |
| t _{RC} | Read Cycle Time | 55 | | 70 | | ns |
| t _{AA} | Address to Data Valid | | 55 | | 70 | ns |
| t _{OHA} | Data Hold from Address Change | 10 | | 10 | | ns |
| t _{ACE} | \overline{CE} LOW to Data Valid | | 55 | | 70 | ns |
| t _{DOE} | \overline{OE} LOW to Data Valid | | 25 | | 35 | ns |
| t _{LZOE} | \overline{OE} LOW to Low Z ^[9] | 5 | | 5 | | ns |
| t _{HZOE} | \overline{OE} HIGH to High Z ^[9, 11] | | 20 | | 25 | ns |
| t _{LZCE} | \overline{CE} LOW to Low Z ^[9] | 10 | | 10 | | ns |
| t _{HZCE} | \overline{CE} HIGH to High Z ^[9, 11] | | 20 | | 25 | ns |
| t _{PU} | \overline{CE} LOW to Power-Up | 0 | | 0 | | ns |
| t _{PD} | \overline{CE} HIGH to Power-Down | | 55 | | 70 | ns |
| t _{DBE} | \overline{BHE} / \overline{BLE} LOW to Data Valid | | 55 | | 70 | ns |
| t _{LZBE} ^[10] | \overline{BHE} / \overline{BLE} LOW to Low Z ^[9] | 5 | | 5 | | ns |
| t _{HZBE} | \overline{BHE} / \overline{BLE} HIGH to High Z ^[9, 11] | | 20 | | 25 | ns |
| WRITE CYCLE^[12] | | | | | | |
| t _{WC} | Write Cycle Time | 55 | | 70 | | ns |
| t _{SCE} | \overline{CE} LOW to Write End | 45 | | 60 | | ns |
| t _{AW} | Address Set-Up to Write End | 45 | | 60 | | ns |
| t _{HA} | Address Hold from Write End | 0 | | 0 | | ns |
| t _{SA} | Address Set-Up to Write Start | 0 | | 0 | | ns |
| t _{PWE} | \overline{WE} Pulse Width | 45 | | 50 | | ns |
| t _{BW} | \overline{BHE} / \overline{BLE} Pulse Width | 50 | | 60 | | ns |
| t _{SD} | Data Set-Up to Write End | 25 | | 30 | | ns |
| t _{HD} | Data Hold from Write End | 0 | | 0 | | ns |
| t _{HZWE} | \overline{WE} LOW to High Z ^[9, 11] | | 20 | | 25 | ns |
| t _{LZWE} | \overline{WE} HIGH to Low Z ^[9] | 5 | | 5 | | ns |

Notes:

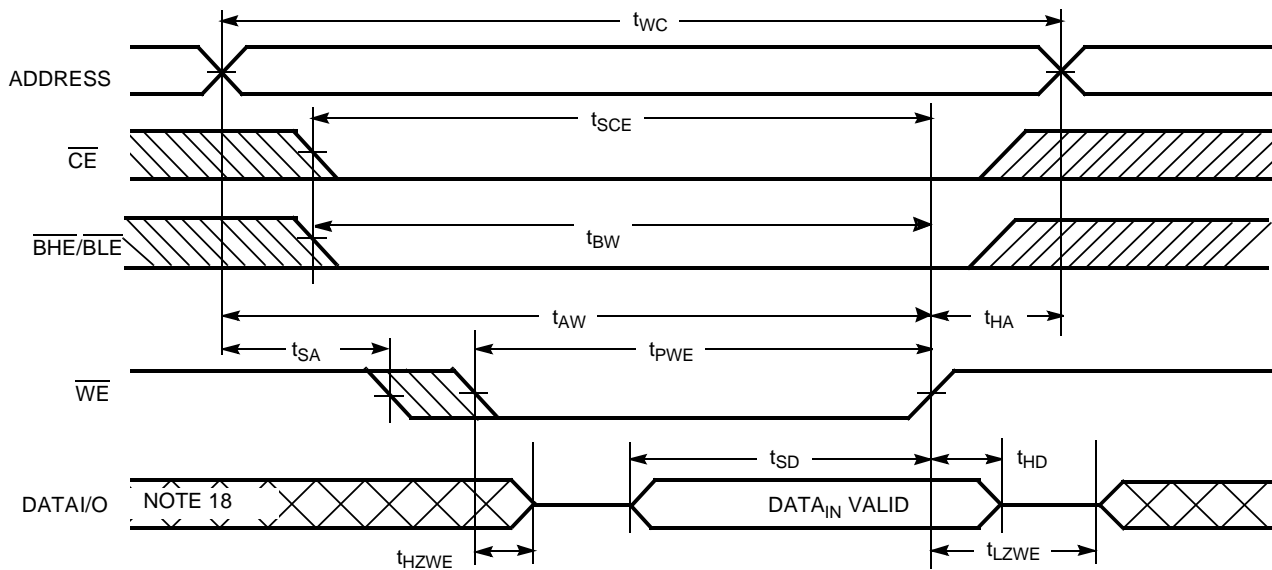
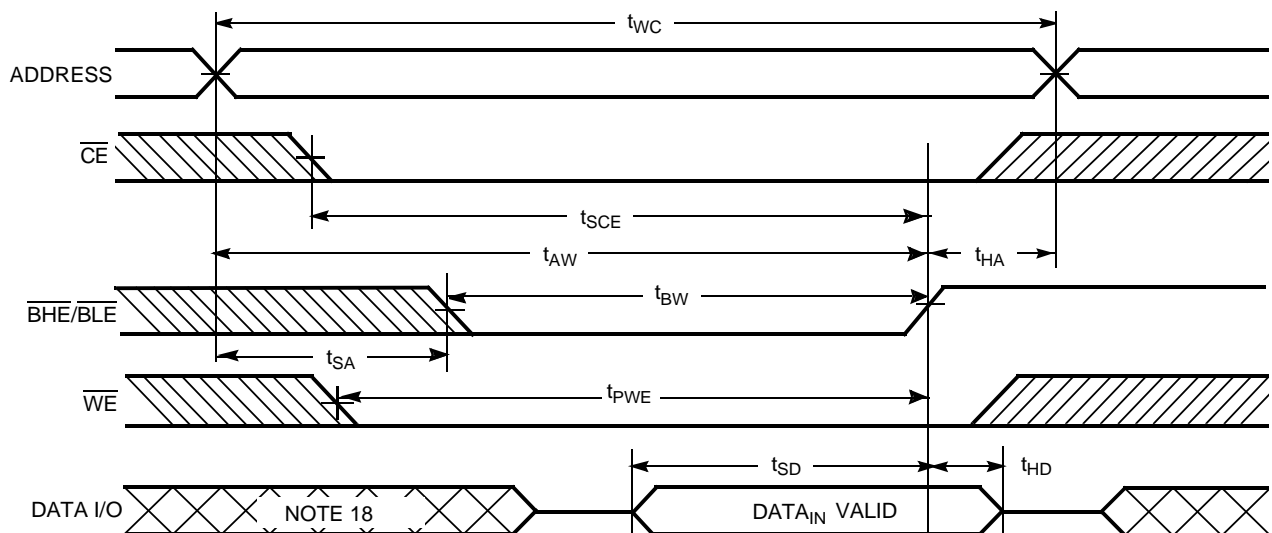
- Test conditions assume signal transition time of 5 ns or less, timing reference levels of $V_{CC(typ.)}/2$, input pulse levels of 0 to $V_{CC(typ.)}$, and output loading of the specified I_{OL}/I_{OH} and 30-pF load capacitance.
- At any given temperature and voltage condition, t_{HZCE} is less than t_{LZCE}, t_{HZBE} is less than t_{LZBE}, t_{HZOE} is less than t_{LZOE}, and t_{HZWE} is less than t_{LZWE} for any given device.
- If both byte enables are toggled together this value is 10 ns.
- t_{HZOE}, t_{HZCE}, t_{HZBE}, and t_{HZWE} transitions are measured when the outputs enter a high impedance state.
- The internal write time of the memory is defined by the overlap of \overline{WE} , $\overline{CE} = V_{IL}$, \overline{BHE} and/or $\overline{BLE} = V_{IL}$. All signals must be ACTIVE to initiate a write and any of these signals can terminate a write by going INACTIVE. The data input set-up and hold timing should be referenced to the edge of the signal that terminates the write.

Switching Waveforms
Read Cycle No. 1 (Address Transition Controlled) ^[13, 14]

Read Cycle No. 2 (\overline{OE} Controlled) ^[14, 15]

Notes:

13. Device is continuously selected. \overline{OE} , \overline{CE} = V_{IL} , BHE and/or \overline{BLE} = V_{IL} .
14. WE is HIGH for read cycle.
15. Address valid prior to or coincident with \overline{CE} , BHE, \overline{BLE} transition LOW.

Switching Waveforms (continued)
Write Cycle No. 1 (WE Controlled) ^[12, 16, 17]

Write Cycle No. 2 (\overline{CE} Controlled) ^[12, 16, 17]

Notes:

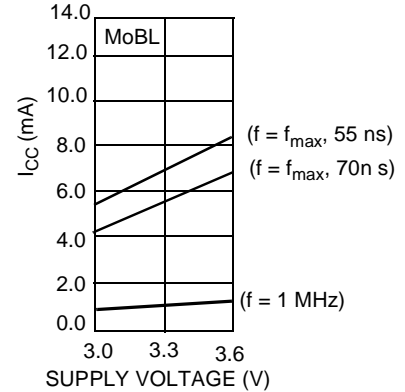
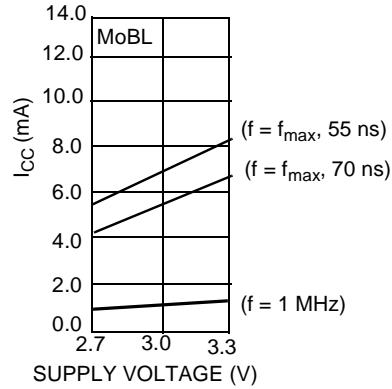
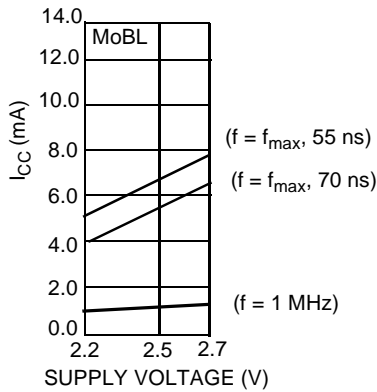
16. Data I/O is high-impedance if $\overline{OE} = V_{IH}$.
17. If \overline{CE} goes HIGH simultaneously with \overline{WE} HIGH, the output remains in a high-impedance state.
18. During this period, the I/Os are in output state and input signals should not be applied.

Switching Waveforms (continued)
Write Cycle No. 3 (\overline{WE} Controlled, \overline{OE} LOW)^[17]

Write Cycle No. 4 ($\overline{BHE}/\overline{BLE}$ Controlled, \overline{OE} LOW)^[17]


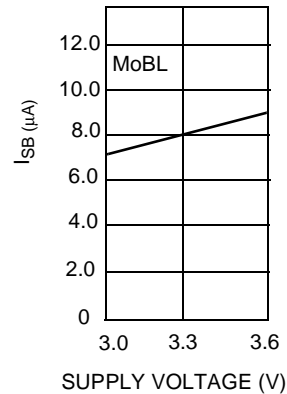
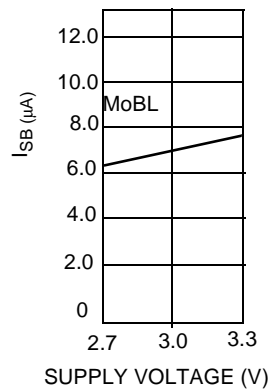
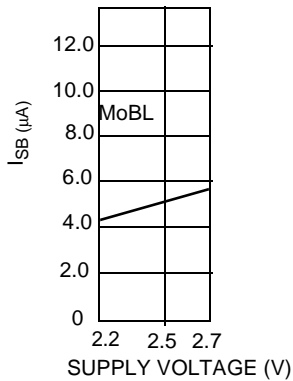
Typical DC and AC Parameters

(Typical values are included for reference only and are not guaranteed or tested. Typical values are measured at $V_{CC} = V_{CC(typ.)}$, $T_A = 25^\circ\text{C}$.)

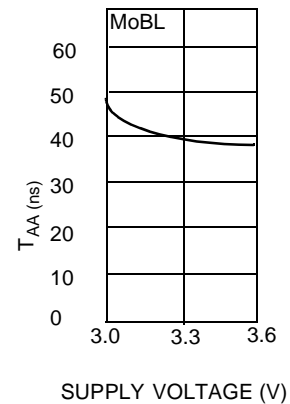
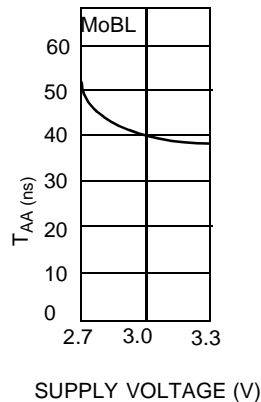
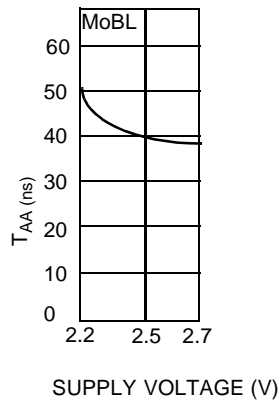
Operating Current vs. Supply Voltage



Standby Current vs. Supply Voltage



Access Time vs. Supply Voltage



Truth Table

| CE | WE | OE | BHE | BLE | Inputs/Outputs | Mode | Power |
|----|----|----|-----|-----|--|---------------------|----------------------|
| H | X | X | X | X | High Z | Deselect/Power-Down | Standby (I_{SB}) |
| X | X | X | H | H | High Z | Deselect/Power-Down | Standby (I_{SB}) |
| L | H | L | L | L | Data Out (I/O ₀ –I/O ₁₅) | Read | Active (I_{CC}) |
| L | H | L | H | L | Data Out (I/O ₀ –I/O ₇); I/O ₈ –I/O ₁₅ in High Z | Read | Active (I_{CC}) |
| L | H | L | L | H | Data Out (I/O ₈ –I/O ₁₅); I/O ₀ –I/O ₇ in High Z | Read | Active (I_{CC}) |
| L | H | H | L | L | High Z | Output Disabled | Active (I_{CC}) |
| L | H | H | H | L | High Z | Output Disabled | Active (I_{CC}) |
| L | H | H | L | H | High Z | Output Disabled | Active (I_{CC}) |
| L | L | X | L | L | Data In (I/O ₀ –I/O ₁₅) | Write | Active (I_{CC}) |
| L | L | X | H | L | Data In (I/O ₀ –I/O ₇); I/O ₈ –I/O ₁₅ in High Z | Write | Active (I_{CC}) |
| L | L | X | L | H | Data In (I/O ₈ –I/O ₁₅); I/O ₀ –I/O ₇ in High Z | Write | Active (I_{CC}) |

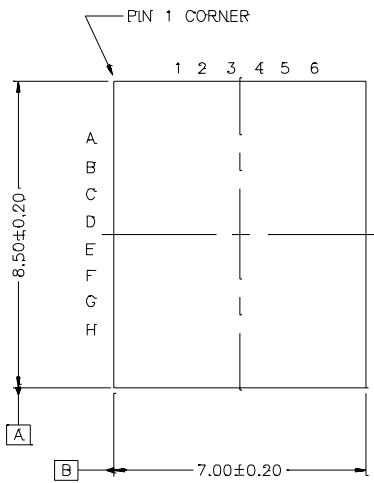
Ordering Information

| Speed (ns) | Ordering Code | Package Name | Package Type | Operating Range |
|------------|---------------------|--------------|---|-----------------|
| 70 | CY62147CV25LL-70BAI | BA48B | 48-Ball Fine Pitch BGA (7 mm x 8.5 mm x 1.2 mm) | Industrial |
| | CY62147CV25LL-70BVI | BV48A | 48-Ball Fine Pitch BGA (6 mm x 8 mm x 1 mm) | |
| | CY62147CV30LL-70BAI | BA48B | 48-Ball Fine Pitch BGA (7 mm x 8.5 mm x 1.2 mm) | |
| | CY62147CV30LL-70BVI | BV48A | 48-Ball Fine Pitch BGA (6 mm x 8 mm x 1 mm) | |
| | CY62147CV33LL-70BAI | BA48B | 48-Ball Fine Pitch BGA (7 mm x 8.5 mm x 1.2 mm) | |
| | CY62147CV33LL-70BVI | BV48A | 48-Ball Fine Pitch BGA (6 mm x 8 mm x 1 mm) | |
| 55 | CY62147CV25LL-55BAI | BA48B | 48-Ball Fine Pitch BGA (7 mm x 8.5 mm x 1.2 mm) | Industrial |
| | CY62147CV25LL-55BVI | BV48A | 48-Ball Fine Pitch BGA (6 mm x 8 mm x 1 mm) | |
| | CY62147CV30LL-55BAI | BA48B | 48-Ball Fine Pitch BGA (7 mm x 8.5 mm x 1.2 mm) | |
| | CY62147CV30LL-55BVI | BV48A | 48-Ball Fine Pitch BGA (6 mm x 8 mm x 1 mm) | |
| | CY62147CV33LL-55BAI | BA48B | 48-Ball Fine Pitch BGA (7 mm x 8.5 mm x 1.2 mm) | |
| | CY62147CV33LL-55BVI | BV48A | 48-Ball Fine Pitch BGA (6 mm x 8 mm x 1 mm) | |

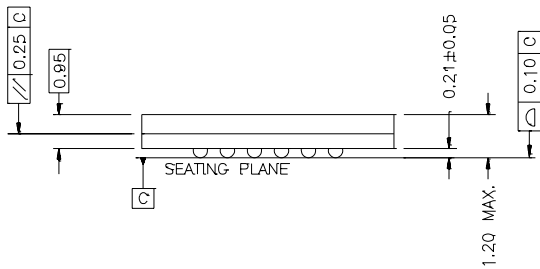
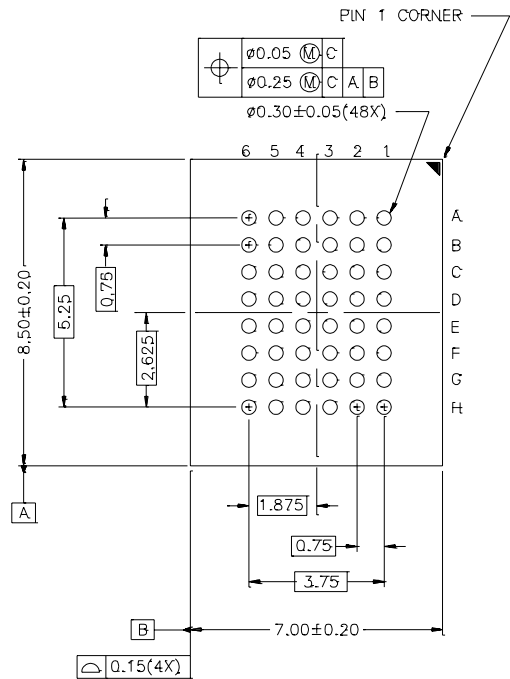
Package Diagrams

48-Ball (7.00 mm x 8.5 mm x 1.2 mm) Thin BGA BA48B

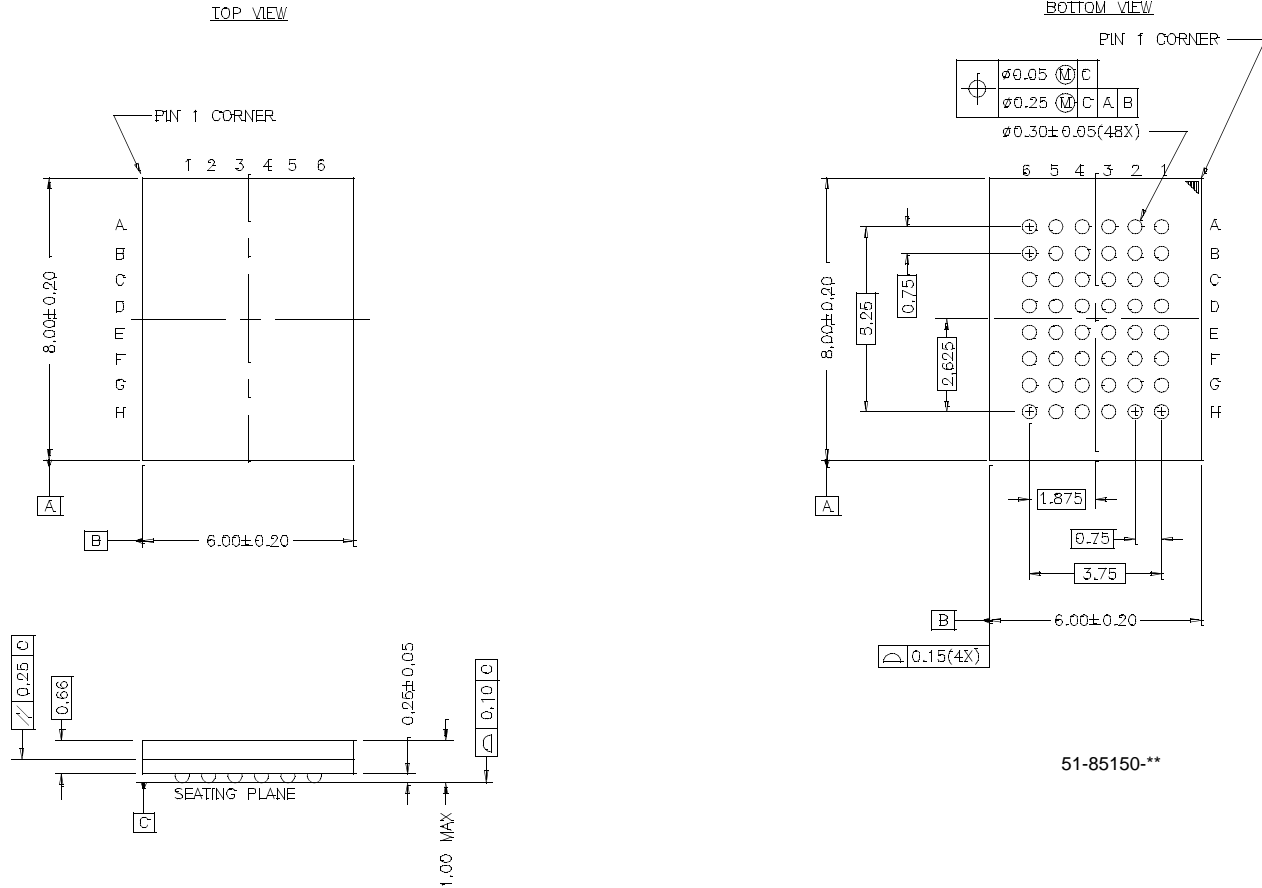
TOP VIEW



BOTTOM VIEW



51-85106-°C

Package Diagrams (continued)
48-Lead VFBGA (6 mm x 8 mm x 1 mm) BV48A


MoBL, MoBL2 and More Battery Life are trademarks of Cypress Semiconductor Corporation. All product and company names mentioned in this document may be the trademarks of their respective holders.



| Document Title: CY62147CV25/30/33 MoBL™ 256K x 16 Static RAM | | | | |
|---|----------------|-------------------|------------------------|---|
| Document Number: 38-05202 | | | | |
| REV. | ECN NO. | Issue Date | Orig. of Change | Description of Change |
| ** | 112394 | 01/31/02 | GAV | Converted from Spec# 38-01123 to 38-05202. Advance Information to Final |
| *A | 114216 | 05/01/02 | MGN/GUG | Improved Typical & Max Icc values |