

512K x 8 MoBL Static RAM

Features

- **High Speed**
 - 55 ns and 70 ns availability
- **Low voltage range:**
 - CY62148CV25: 2.2V–2.7V
 - CY62148CV30: 2.7V–3.3V
 - CY62148CV33: 3.0V–3.6V
- **Pin compatible with CY62148V**
- **Ultra low active power**
 - Typical active current: 1.5 mA @ f = 1MHz
 - Typical active current: 5.5 mA @ f = f_{max} (70 ns speed)
- **Low standby power**
- **Easy memory expansion with \overline{CE} and \overline{OE} features**
- **Automatic power-down when deselected**
- **CMOS for optimum speed/power**

Functional Description

The CY62148CV25/30/33 are high-performance CMOS static RAMs organized as 512K words by 8 bits. This device features

advanced circuit design to provide ultra-low active current. This is ideal for providing More Battery Life™ (MoBL™) in portable applications such as cellular telephones. The device also has an automatic power-down feature that significantly reduces power consumption by 80% when addresses are not toggling. The device can be put into standby mode when deselected (\overline{CE} HIGH).

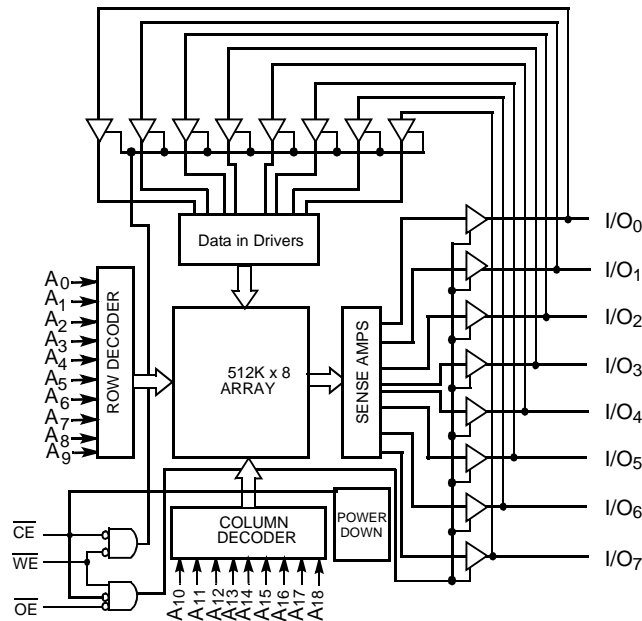
Writing to the device is accomplished by taking Chip Enable (\overline{CE}) and Write Enable (\overline{WE}) inputs LOW. Data on the eight I/O pins (I/O_0 through I/O_7) is then written into the location specified on the address pins (A_0 through A_{18}).

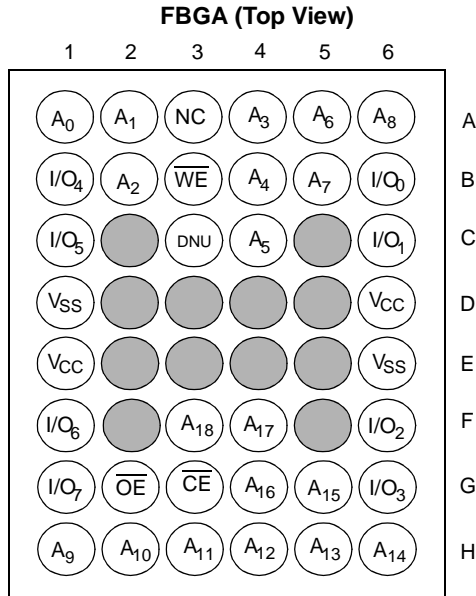
Reading from the device is accomplished by taking Chip Enable (\overline{CE}) and Output Enable (\overline{OE}) LOW while forcing Write Enable (\overline{WE}) HIGH. Under these conditions, the contents of the memory location specified by the address pins will appear on the I/O pins.

The eight input/output pins (I/O_0 through I/O_7) are placed in a high-impedance state when the device is deselected (\overline{CE} HIGH), the outputs are disabled (\overline{OE} HIGH), or during a write operation (\overline{CE} LOW and \overline{WE} LOW).

The CY62148CV25/30/33 are available in a 36-ball FBGA package.

Logic Block Diagram



Pin Configurations^[1,2]

Maximum Ratings

(Above which the useful life may be impaired. For user guidelines, not tested.)

Storage Temperature-65°C to +150°C
 Ambient Temperature with Power Applied.....-55°C to +125°C
 Supply Voltage to Ground Potential.....-0.5V to V_{CCmax} + 0.5V

DC Voltage Applied to Outputs

in High Z State^[3]-0.5V to V_{CC} + 0.3V
 DC Input Voltage^[3]-0.5V to V_{CC} + 0.3V
 Output Current into Outputs (LOW).....20 mA
 Static Discharge Voltage.....>2001V
 MIL-STD-883, Method 3015)
 Latch-Up Current >.....>200 mA

Operating Range

Product	Range	Ambient Temperature	V _{CC}
CY62148CV25	Industrial	-40°C to +85°C	2.2V to 2.7V
CY62148CV30			2.7V to 3.3V
CY62148CV33			3.0V to 3.6V

Product Portfolio

Product	V _{CC} Range			Speed	Power Dissipation (Industrial)					
					Operating (I _{CC})				Standby (I _{SB2})	
	Min.	Typ. ^[4]	Max.		f = 1 MHz		f = f _{max}		Typ. ^[4]	Max.
					Typ. ^[4]	Max.	Typ. ^[4]	Max.		
CY62148CV25	2.2V	2.5V	2.7V	55 ns	1.5 mA	3 mA	7 mA	15 mA	5 μA	15 μA
				70 ns	1.5 mA	3 mA	5.5 mA	12 mA		
CY62148CV30	2.7V	3.0V	3.3V	55 ns	1.5 mA	3 mA	7 mA	15 mA	7 μA	15 μA
				70 ns	1.5 mA	3 mA	5.5 mA	12 mA		
CY62148CV33	3.0V	3.3V	3.6V	55 ns	1.5 mA	3 mA	7 mA	15 mA	8 μA	20 μA
				70 ns	1.5 mA	3 mA	5.5 mA	12 mA		

Notes:

- NC pins are not connected to the die.
- C3 (DNU) can be left as NC or V_{SS} to ensure proper application.
- V_{IL(min.)} = -2.0V for pulse durations less than 20 ns.
- Typical values are included for reference only and are not guaranteed or tested. Typical values are measured at V_{CC} = V_{CC(typ.)}, T_A = 25°C.

Electrical Characteristics Over the Operating Range

Parameter	Description	Test Conditions		CY62148CV25-55			CY62148CV25-70			Unit
				Min.	Typ. ^[4]	Max.	Min.	Typ. ^[4]	Max.	
V _{OH}	Output HIGH Voltage	I _{OH} = -0.1 mA	V _{CC} = Min.	2.0			2.0			V
V _{OL}	Output LOW Voltage	I _{OL} = 0.1 mA	V _{CC} = MinV			0.4			0.4	V
V _{IH}	Input HIGH Voltage			1.8		V _{CC} +0.3V	1.8		V _{CC} +0.3V	V
V _{IL}	Input LOW Voltage			-0.3		0.6	-0.3		0.6	V
I _{IX}	Input Load Current	GND ≤ V _I ≤ V _{CC}		-1		+1	-1		+1	μA
I _{OZ}	Output Leakage Current	GND ≤ V _O ≤ V _{CC} , Output Disabled		-1		+1	-1		+1	μA
I _{CC}	V _{CC} Operating Supply Current	f = f _{MAX} = 1/t _{RC}	V _{CC} = 3.6V		7	15		5.5	12	mA
		f = 1 MHz	I _{OUT} = 0 mA CMOS Levels		1.5	3		1.5	3	mA
I _{SB1}	Automatic CE Power-Down Current — CMOS Inputs	$\overline{CE} \geq V_{CC} - 0.2V$ $V_{IN} \geq V_{CC} - 0.2V$ or $V_{IN} \leq 0.2V$, $f = f_{max}$ (Address and Data Only), $f = 0$ (OE, WE)			5	15		5	15	μA
I _{SB2}	Automatic CE Power-Down Current — CMOS Inputs	$\overline{CE} \geq V_{CC} - 0.2V$ $V_{IN} \geq V_{CC} - 0.2V$ or $V_{IN} \leq 0.2V$, $f = 0$, V _{CC} = 3.6V								

Parameter	Description	Test Conditions		CY62148CV30-55			CY62148CV30-70			Unit
				Min.	Typ. ^[4]	Max.	Min.	Typ. ^[4]	Max.	
V _{OH}	Output HIGH Voltage	I _{OH} = -1.0 mA	V _{CC} = Min.	2.4			2.4			V
V _{OL}	Output LOW Voltage	I _{OL} = 2.1 mA	V _{CC} = MinV			0.4			0.4	V
V _{IH}	Input HIGH Voltage			2.2		V _{CC} +0.5V	2.2		V _{CC} +0.5V	V
V _{IL}	Input LOW Voltage			-0.3		0.8	-0.3		0.8	V
I _{IX}	Input Load Current	GND ≤ V _I ≤ V _{CC}		-1		+1	-1		+1	μA
I _{OZ}	Output Leakage Current	GND ≤ V _O ≤ V _{CC} , Output Disabled		-1		+1	-1		+1	μA
I _{CC}	V _{CC} Operating Supply Current	f = f _{MAX} = 1/t _{RC}	V _{CC} = 3.6V		12	25		7	15	mA
		f = 1 MHz	I _{OUT} = 0 mA CMOS Levels		1.5	3		1.5	3	mA
I _{SB1}	Automatic CE Power-Down Current — CMOS Inputs	$\overline{CE} \geq V_{CC} - 0.2V$ $V_{IN} \geq V_{CC} - 0.2V$ or $V_{IN} \leq 0.2V$, $f = f_{max}$ (Address and Data Only), $f = 0$ (OE, WE)			7	15		7	15	μA
I _{SB2}	Automatic CE Power-Down Current — CMOS Inputs	$\overline{CE} \geq V_{CC} - 0.2V$ $V_{IN} \geq V_{CC} - 0.2V$ or $V_{IN} \leq 0.2V$, $f = 0$, V _{CC} = 3.6V								

Parameter	Description	Test Conditions		CY62148CV33-55			CY62148CV33-70			Unit
				Min.	Typ. ^[4]	Max.	Min.	Typ. ^[4]	Max.	
V _{OH}	Output HIGH Voltage	I _{OH} = -1.0 mA	V _{CC} = 3.0V	2.4			2.4			V
V _{OL}	Output LOW Voltage	I _{OL} = 2.1 mA	V _{CC} = 3.0V			0.4			0.4	V
V _{IH}	Input HIGH Voltage			2.2		V _{CC} +0.5V	2.2		V _{CC} +0.5V	V
V _{IL}	Input LOW Voltage			-0.3		0.8	-0.3		0.8	V
I _{IX}	Input Load Current	GND ≤ V _I ≤ V _{CC}		-1		+1	-1		+1	μA
I _{OZ}	Output Leakage Current	GND ≤ V _O ≤ V _{CC} , Output Disabled		-1		+1	-1		+1	μA
I _{CC}	V _{CC} Operating Supply Current	f = f _{MAX} = 1/t _{RC}	V _{CC} = 3.6V		7	15		5.5	12	mA
		f = 1 MHz	I _{OUT} = 0 mA CMOS Levels		1.5	3		1.5	3	mA
I _{SB1}	Automatic CE Power-Down Current — CMOS Inputs	$\overline{CE} \geq V_{CC} - 0.2V$ $V_{IN} \geq V_{CC} - 0.2V$ or $V_{IN} \leq 0.2V$, $f = f_{max}$ (Address and Data Only), $f = 0$ (OE, WE)			8	20		8	20	μA
I _{SB2}	Automatic CE Power-Down Current — CMOS Inputs	$\overline{CE} \geq V_{CC} - 0.2V$ $V_{IN} \geq V_{CC} - 0.2V$ or $V_{IN} \leq 0.2V$, $f = 0, V_{CC} = 3.6V$								

Capacitance⁵

Parameter	Description	Test Conditions	Max.	Unit
C _{IN}	Input Capacitance	T _A = 25°C, f = 1 MHz, V _{CC} = V _{CC(typ.)}	6	pF
C _{OUT}	Output Capacitance		8	pF

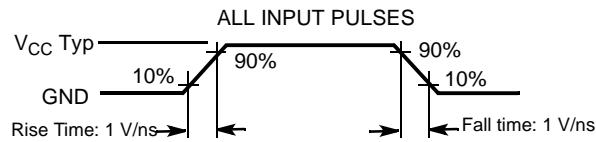
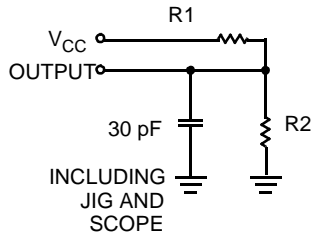
Thermal Resistance

Description	Test Conditions	Symbol	BGA	Unit
Thermal Resistance ^[5] (Junction to Ambient)	Still Air, soldered on a 3 x 4.5 inch, two-layer printed circuit board	Θ _{JA}	55	°C/W
Thermal Resistance ^[5] (Junction to Case)		Θ _{JC}	16	°C/W

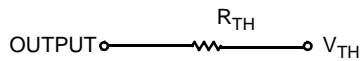
Note:

- Tested initially and after any design or process changes that may affect these parameters.

AC Test Loads and Waveforms



Equivalent to: THÉVENIN EQUIVALENT

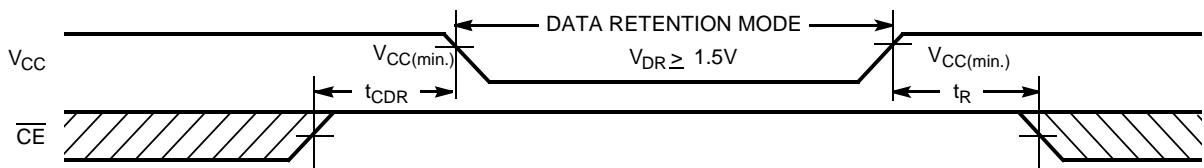


Parameters	2.5V	3.0V	3.3V	Unit
R1	16.6	1.105	1.216	K Ohms
R2	15.4	1.550	1.374	K Ohms
R _{TH}	8.0	0.645	0.645	K Ohms
V _{TH}	1.20	1.75	1.75	Volts

Data Retention Characteristics (Over the Operating Range)

Parameter	Description	Conditions	Min.	Typ. ^[4]	Max.	Unit
V _{DR}	V _{CC} for Data Retention		1.5		V _{CCmax}	V
I _{CCDR}	Data Retention Current	V _{CC} = 1.5V CE ≥ V _{CC} - 0.2V, V _{IN} ≥ V _{CC} - 0.2V or V _{IN} ≤ 0.2V		3	10	μA
t _{CDR} ^[5]	Chip Deselect to Data Retention Time		0			ns
t _R ^[6]	Operation Recovery Time		t _{RC}			ns

Data Retention Waveform



Note:

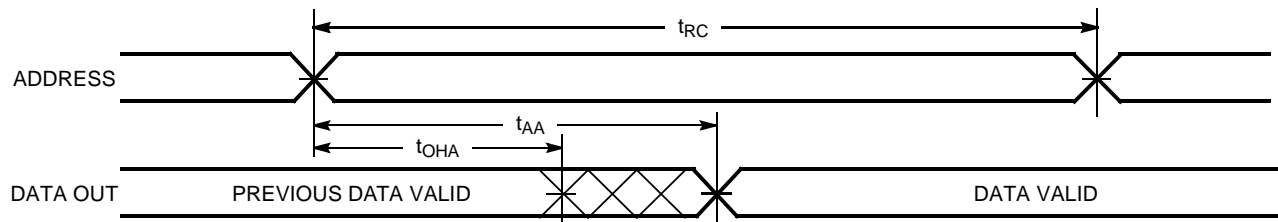
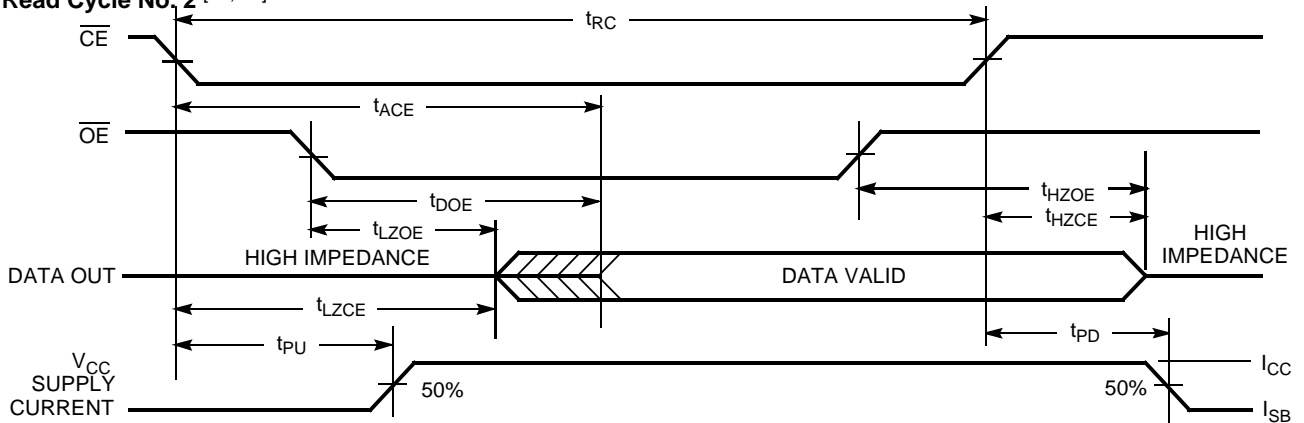
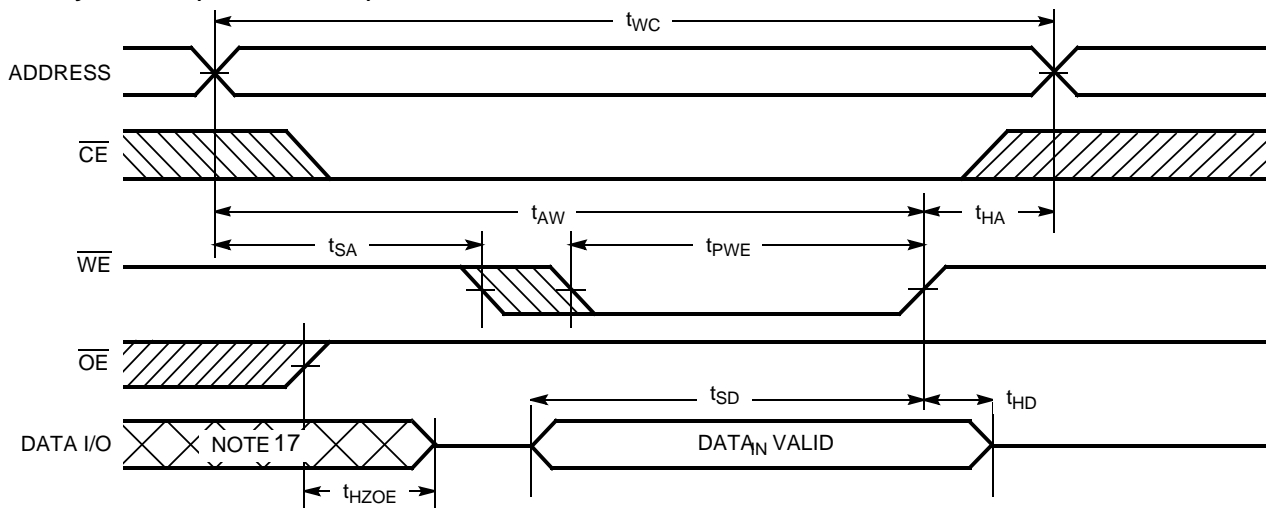
6. Full Device AC operation requires linear V_{CC} ramp from V_{DR} to V_{CC(min.)} ≥ 50 μs or stable at V_{CC(min.)} ≥ 50 μs.

Switching Characteristics Over the Operating Range^[7]

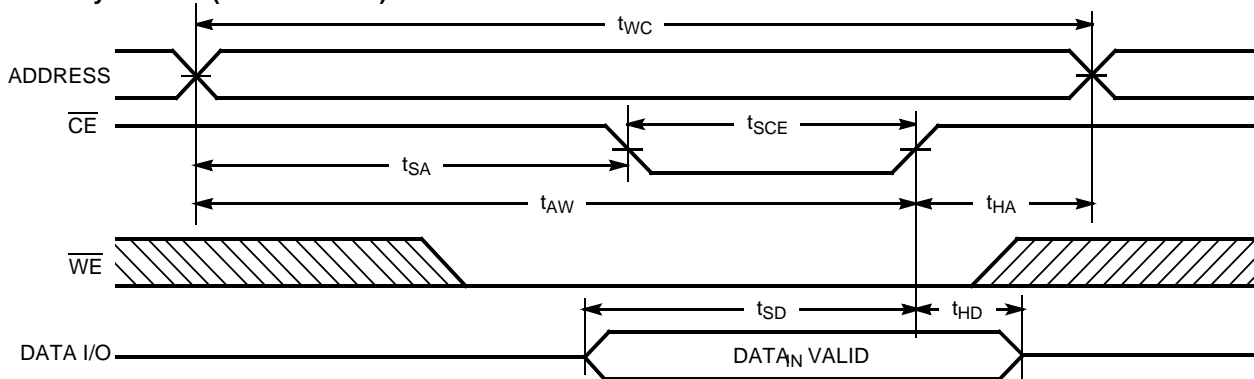
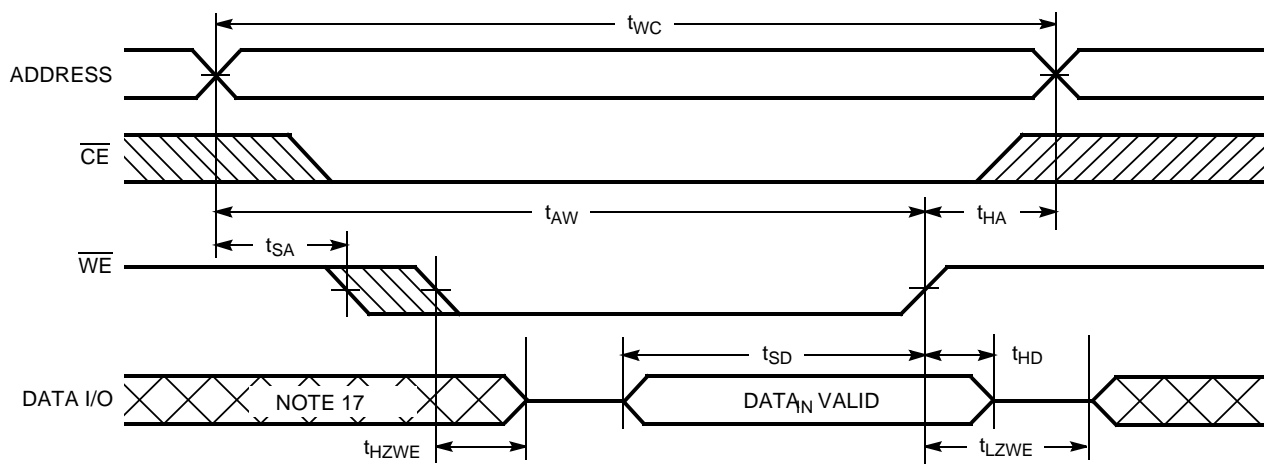
Parameter	Description	55 ns		70 ns		Unit
		Min.	Max.	Min.	Max.	
READ CYCLE						
t _{RC}	Read Cycle Time	55		70		ns
t _{AA}	Address to Data Valid		55		70	ns
t _{OHA}	Data Hold from Address Change	10		10		ns
t _{ACE}	\overline{CE} LOW to Data Valid		55		70	ns
t _{DOE}	\overline{OE} LOW to Data Valid		25		35	ns
t _{LZOE}	\overline{OE} LOW to Low Z ^[8]	5		5		ns
t _{HZOE}	\overline{OE} HIGH to High Z ^[9]		20		25	ns
t _{LZCE}	\overline{CE} LOW to Low Z ^[8]	10		10		ns
t _{HZCE}	\overline{CE} HIGH to High Z ^[8, 9]		20		25	ns
t _{PU}	\overline{CE} LOW to Power-Up	0		0		ns
t _{PD}	\overline{CE} HIGH to Power-Down		55		70	ns
WRITE CYCLE^[10, 11]						
t _{WC}	Write Cycle Time	55		70		ns
t _{SCE}	\overline{CE} LOW to Write End	45		60		ns
t _{AW}	Address Set-Up to Write End	45		60		ns
t _{HA}	Address Hold from Write End	0		0		ns
t _{SA}	Address Set-Up to Write Start	0		0		ns
t _{PWE}	\overline{WE} Pulse Width	45		50		ns
t _{SD}	Data Set-Up to Write End	30		30		ns
t _{HD}	Data Hold from Write End	0		0		ns
t _{HZWE}	\overline{WE} LOW to High Z ^[8, 9]		20		25	ns
t _{LZWE}	\overline{WE} HIGH to Low Z ^[8]	5		10		ns

Notes:

7. Test conditions assume signal transition time of 5 ns or less, timing reference levels of 1.5V, input pulse levels of 0 to V_{CC(typ.)}, and output loading of the specified I_{OL}/I_{OH} and 30 pF load capacitance.
8. At any given temperature and voltage condition, t_{HZCE} is less than t_{LZCE}, t_{HZOE} is less than t_{LZOE}, and t_{HZWE} is less than t_{LZWE} for any given device.
9. t_{HZOE}, t_{HZCE}, and t_{HZWE} are specified with C_L = 5 pF as in part (b) of AC Test Loads. Transition is measured ±200 mV from steady-state voltage.
10. The internal write time of the memory is defined by the overlap of \overline{CE} LOW and \overline{WE} LOW. Both signals must be LOW to initiate a write and either signal can terminate a write by going HIGH. The data input set-up and hold timing should be referenced to the rising edge of the signal that terminates the write.
11. The minimum write cycle time for Write Cycle #3 (WE controlled, OE LOW) is the sum of t_{HZWE} and t_{SD}.

Switching Waveforms
Read Cycle No. 1 [12, 13]

Read Cycle No. 2 [13, 14]

Write Cycle No. 1 (WE Controlled) [10, 15, 16]

Notes:

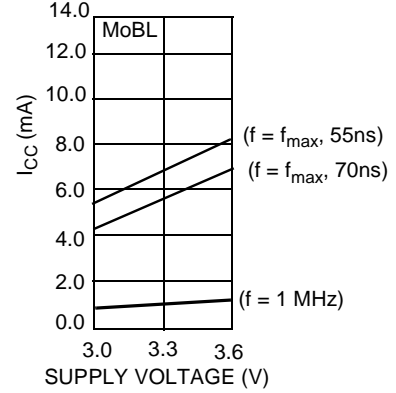
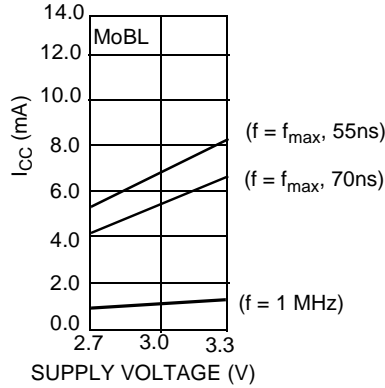
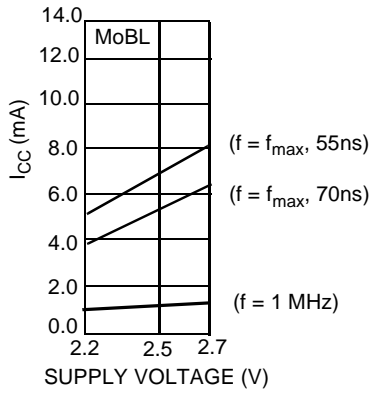
12. Device is continuously selected. \overline{OE} , $\overline{CE} = V_{IL}$.
13. \overline{WE} is HIGH for read cycle.
14. Address valid prior to or coincident with \overline{CE} transition LOW.
15. Data I/O is high impedance if $OE = V_{IH}$.
16. If \overline{CE} goes HIGH simultaneously with \overline{WE} HIGH, the output remains in a high-impedance state.
17. During this period, the I/Os are in output state and input signals should not be applied.

Switching Waveforms (continued)
Write Cycle No. 2 ($\overline{\text{CE}}$ Controlled) [10, 15, 16]

Write Cycle No. 3 ($\overline{\text{WE}}$ Controlled, $\overline{\text{OE}}$ LOW) [11, 16]


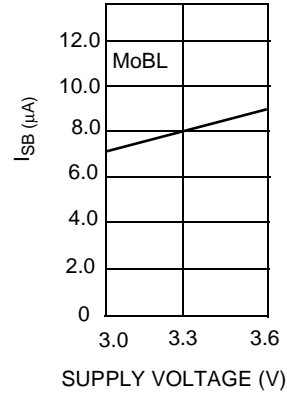
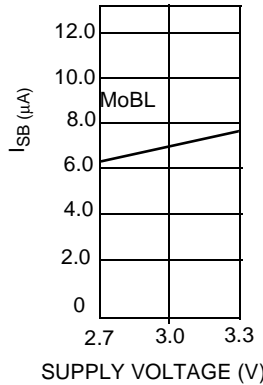
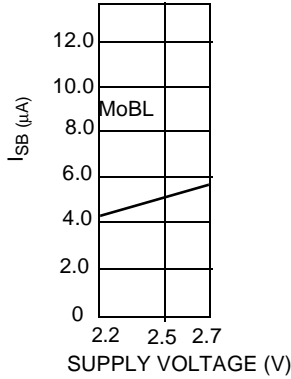
Typical DC and AC Parameters

(Typical values are included for reference only and are not guaranteed or tested. Typical values are measured at $V_{CC} = V_{CC(typ)}$, $T_A = 25^\circ\text{C}$.)

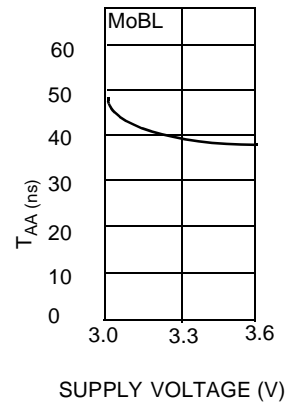
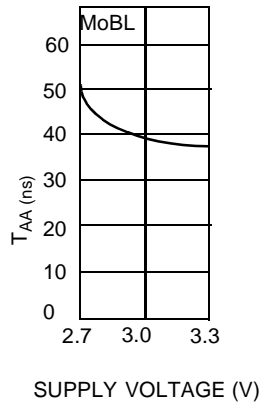
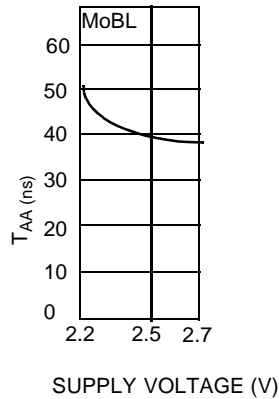
Operating Current vs. Supply Voltage



Standby Current vs. Supply Voltage



Access Time vs. Supply Voltage



Truth Table

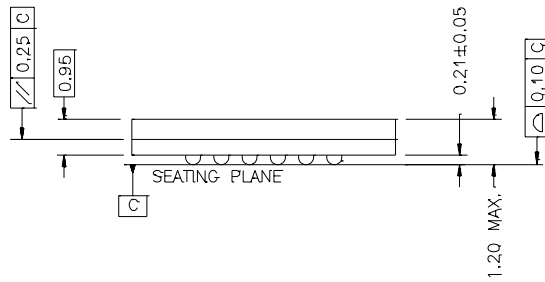
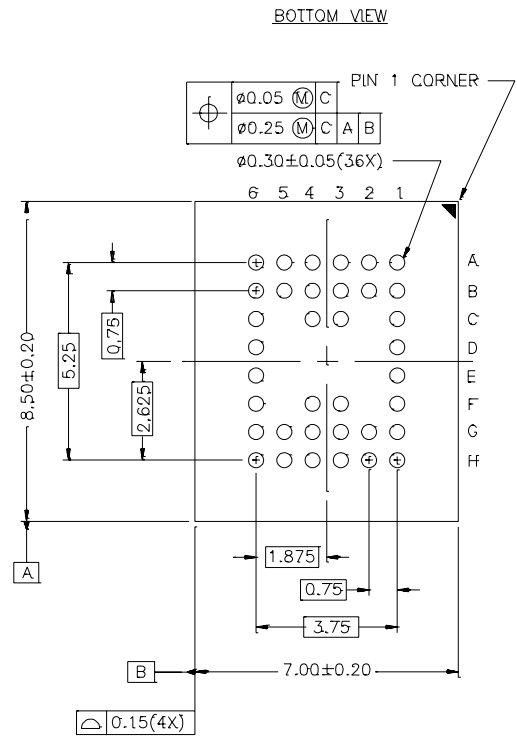
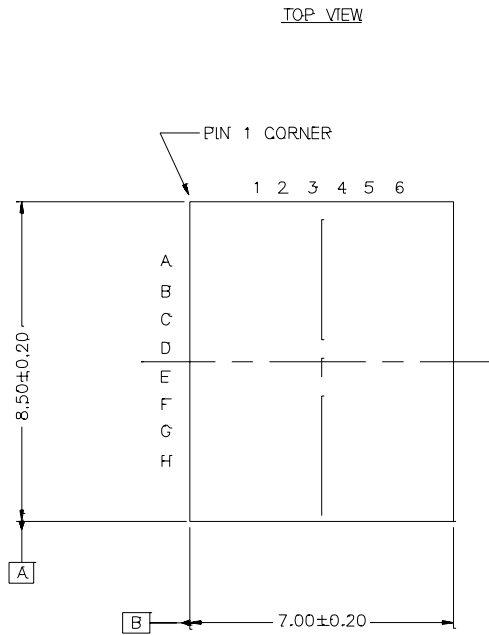
CE	WE	OE	Inputs/Outputs	Mode	Power
H	X	X	High Z	Deselect/Power-Down	Standby (I_{SB})
L	H	L	Data Out	Read	Active (I_{CC})
L	L	X	Data In	Write	Active (I_{CC})
L	H	H	High Z	Output Disabled	Active (I_{CC})

Ordering Information

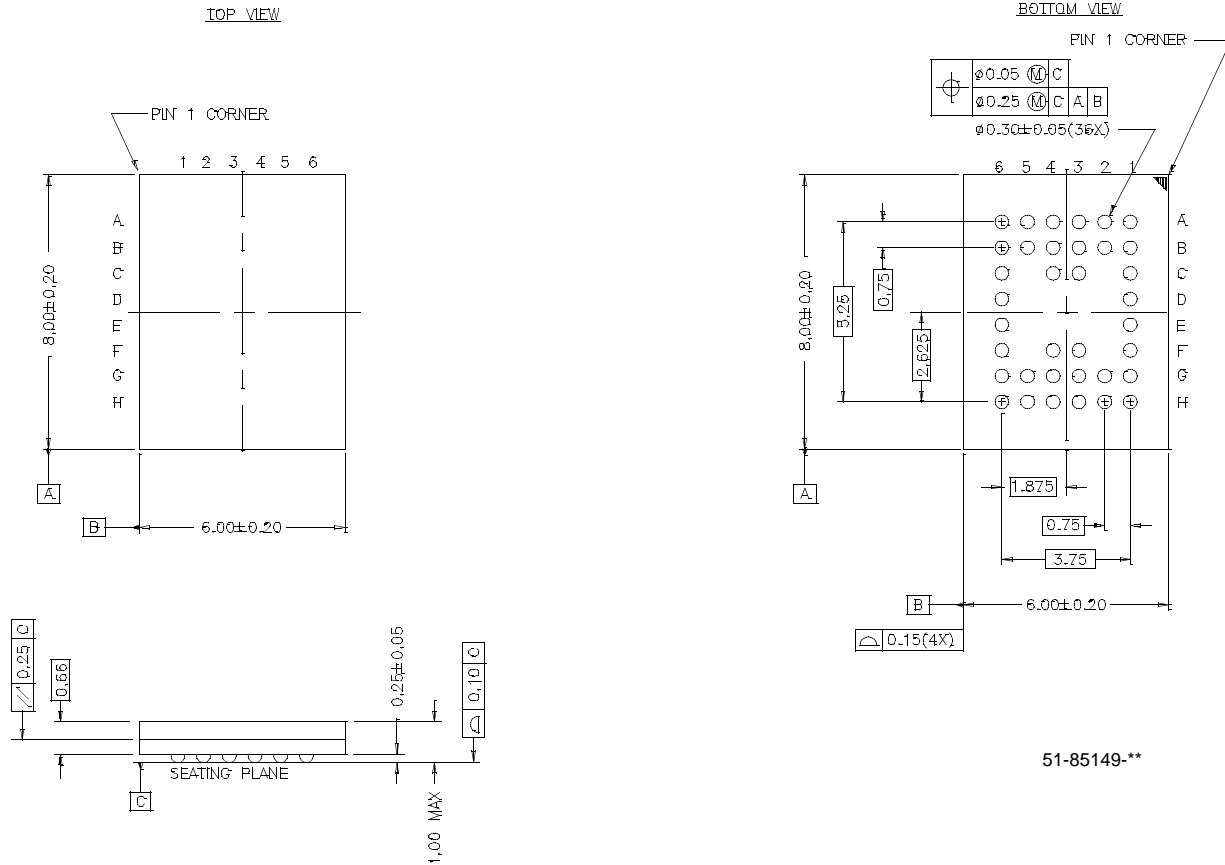
Speed (ns)	Ordering Code	Package Name	Package Type	Operating Range
70	CY62148CV25LL-70BAI	BA36B	36-Ball Fine Pitch BGA (7 mm x 8.5 mm x 1.2 mm)	Industrial
	CY62148CV25LL-70BVI	BV36A	36-Ball Fine Pitch BGA (6 mm x 8 mm x 1 mm)	
	CY62148CV30LL-70BAI	BA36B	36-Ball Fine Pitch BGA (7 mm x 8.5 mm x 1.2 mm)	
	CY62148CV30LL-70BVI	BV36A	36-Ball Fine Pitch BGA (6 mm x 8 mm x 1 mm)	
	CY62148CV33LL-70BAI	BA36B	36-Ball Fine Pitch BGA (7 mm x 8.5 mm x 1.2 mm)	
	CY62148CV33LL-70BVI	BV36A	36-Ball Fine Pitch BGA (6 mm x 8 mm x 1 mm)	
55	CY62148CV25LL-55BAI	BA36B	36-Ball Fine Pitch BGA (7 mm x 8.5 mm x 1.2 mm)	
	CY62148CV25LL-55BVI	BV36A	36-Ball Fine Pitch BGA (6 mm x 8 mm x 1 mm)	
	CY62148CV30LL-55BAI	BA36B	36-Ball Fine Pitch BGA (7 mm x 8.5 mm x 1.2 mm)	
	CY62148CV30LL-55BVI	BV36A	36-Ball Fine Pitch BGA (6 mm x 8 mm x 1 mm)	
	CY62148CV33LL-55BAI	BA36B	36-Ball Fine Pitch BGA (7 mm x 8.5 mm x 1.2 mm)	
	CY62148CV33LL-55BVI	BV36A	36-Ball Fine Pitch BGA (6 mm x 8 mm x 1 mm)	

Package Diagrams

36-Ball (7.00 mm x 8.5 mm x 1.2 mm) Thin BGA BA36B



51-85105-°C

Package Diagrams (continued)
36-Lead VFBGA (6 x 8 x 1 mm) BV36A


MoBL, MoBL2, and More Battery Life are trademarks of Cypress Semiconductor Corporation. All product and company names mentioned in this document may be the trademarks of their respective holders.



Document Title: CY62148CV25/30/33 MoBL™ 512K x 8 MoBL Static RAM Document Number: 38-05035				
REV.	ECN NO.	Issue Date	Orig. of Change	Description of Change
**	109951	12/02/01	SZV	Change from Spec number: 38-01126 to 38-05035
*A	110643	05/01/02	MGN	Advance to Final, Improved Typical and Max Icc values, added BV package