

PLEASE CHECK WWW.MOLEX.COM FOR LATEST PART INFORMATION

Part Number: [0900590009](#)
Status: **Active**
Overview: [cgrid_iiijcgrid_sl_products](#)
Description: 2.54mm (.100") Pitch C-Grid® Micro Shunt, Low Profile, 15mm" Select Gold (Au) with Gold (Au) Flash Plating

Documents:

3D Model	Product Specification PS-90059 (PDF)
Drawing (PDF)	RoHS Certificate of Compliance (PDF)

Agency Certification

CSA	LR19980
UL	E29179

General

Product Family	Accessories
Series	90059
Component Type	Shunt
Overview	cgrid_iiijcgrid_sl_products
Product Name	C-Grid®, C-Grid III™, SL™

Physical

Circuits (Loaded)	2
Circuits (maximum)	2
Color - Resin	Natural
Flammability	94V-0
Gender	Female
Lock to Mating Part	None
Material - Metal	Phosphor Bronze
Material - Plating Mating	Gold
Material - Plating Termination	Nickel
Material - Resin	Polyester
Number of Rows	1
Packaging Type	Bag
Plating min: Mating (µin)	15.2
Plating min: Mating (µm)	0.38
Plating min: Termination (µin)	8
Plating min: Termination (µm)	0.2
Temperature Range - Operating	-55°C to +125°C
Termination Interface: Style	Surface Mount

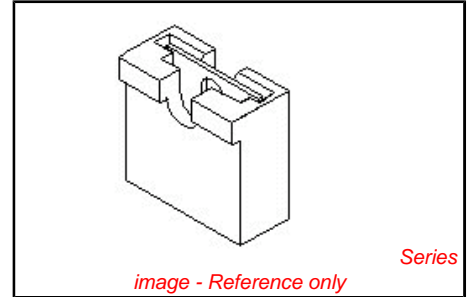
Electrical

Current - Maximum per Contact	3A
-------------------------------	----

Material Info

Reference - Drawing Numbers

Product Specification	PS-90059
Sales Drawing	SDA-90059



<p>EU RoHS ELV and RoHS Compliant REACH SVHC Contains SVHC: No Halogen-Free Status Not Halogen-Free</p>	<p>China RoHS</p>
--	--------------------------

Need more information on product environmental compliance?

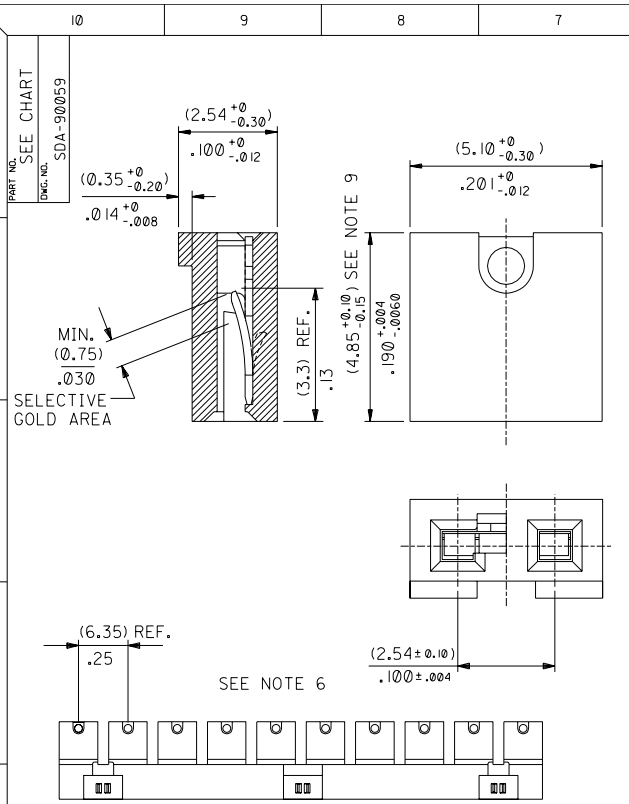
Email productcompliance@molex.com
 For a multiple part number RoHS Certificate of Compliance, [click here](#)

Please visit the [Contact Us](#) section for any non-product compliance questions.

Search Parts in this Series
[90059Series](#)

Use With
 (0.64)/.025 square and round pins

PLEASE CHECK WWW.MOLEX.COM FOR LATEST PART INFORMATION



SUPPLIED AS STRIP/LOOSE	PART No	TERMINAL PLATING	HSG. COLOUR	PACKAGING INNER QTY.	PACKAGING QTY. PER BOX
⑦ STRIP	90059-0007	TIN (5µ)/.0002 MIN. OVER NI (1.27µ)/.00005 MIN.	BLACK	1000 pcs	20,000 pcs
LOOSE	90059-1007	TIN (5µ)/.0002 MIN. OVER NI (1.27µ)/.00005 MIN.	BLACK	10,000 pcs	40,000 pcs
STRIP	90059-0009	GOLD (0.38µ)/.000015 MIN IN CONTACT AREA OVER NICKEL (1.27µ)/.00005 IN CONTACT AREA WITH NICKEL (0.2µ)/.000008 OVERALL MIN.	WHITE	1000 pcs	20,000 pcs
LOOSE	90059-1009	GOLD (0.38µ)/.000015 MIN IN CONTACT AREA OVER NICKEL (1.27µ)/.00005 IN CONTACT AREA WITH NICKEL (0.2µ)/.000008 OVERALL MIN.	WHITE	10,000 pcs	40,000 pcs
STRIP	90059-0011	GOLD (0.38µ)/.000015 MIN IN CONTACT AREA OVER NICKEL (1.27µ)/.00005 IN CONTACT AREA WITH NICKEL (0.2µ)/.000008 OVERALL MIN.	BLACK	1000 pcs	20,000 pcs
⑥ STRIP	90059-0012	GOLD (0.76µ)/.000030 MIN IN CONTACT AREA OVER NICKEL (1.27µ)/.00005 IN CONTACT AREA WITH NICKEL (0.2µ)/.000008 OVERALL MIN.	WHITE	1000 pcs	20,000 pcs
⑥ STRIP	90059-0013	0.76µm OF NI UNDER 3 - 5 µm OF TIN	BLACK	1000 pcs	20,000 pcs
⑥ STRIP	90059-0014	GOLD (0.1µ)/.000004 MIN OVERALL OVER (1.0µ)/.00004 MIN NICKEL OVERALL	WHITE	1000 pcs	20,000 pcs
STRIP	90059-0015	GOLD (1.0µ)/.00004 MIN IN CONTACT AREA OVER NICKEL (0.76µ)/.00003 IN CONTACT AREA WITH NICKEL (0.2µ)/.000008 OVERALL MIN.	WHITE	1000 pcs	20,000 pcs
STRIP	90059-0016	GOLD (0.38µ)/.000015 MIN IN CONTACT AREA OVER NICKEL (1.27µ)/.00005 IN CONTACT AREA WITH NICKEL (0.2µ)/.000008 OVERALL MIN.	RED	1000 pcs	20,000 pcs
LOOSE	90059-1011	GOLD (0.38µ)/.000015 MIN IN CONTACT AREA OVER NICKEL (1.27µ)/.00005 IN CONTACT AREA WITH NICKEL (0.2µ)/.000008 OVERALL MIN.	BLACK	10,000 pcs	40,000 pcs
STRIP	90059-0017	TIN (5µ)/.0002 MIN. OVER NI (1.27µ)/.00005 MIN.	WHITE	1000 pcs	20,000 pcs
STRIP	90059-0018	GOLD (0.38µ)/.000015 MIN IN CONTACT AREA OVER NICKEL (1.27µ)/.00005 IN CONTACT AREA WITH NICKEL (0.2µ)/.000008 OVERALL MIN.	BLUE	1000 pcs	20,000 pcs
STRIP	90059-0020	GOLD (0.1µ)/.000004 MIN OVERALL OVER (1.0µ)/.00004 MIN NICKEL OVERALL	BLACK	1000 pcs	20,000 pcs
LOOSE	90059-1020	GOLD (0.1µ)/.000004 MIN OVERALL OVER (1.0µ)/.00004 MIN NICKEL OVERALL	BLACK	10,000 pcs	40,000 pcs

- NOTES:
- HOUSING MATERIAL: POLYESTER 30% GLASS FILLED.
 - TERMINAL MATERIAL: PHOSPHOR BRONZE.
 - THIS PART IS STACKABLE, END TO END AND SIDE BY SIDE ON (2.54)/.100 CENTRES.
 - SHUNT WILL ACCEPT (0.64)/.025 SQUARE AND ROUND PINS.
 - MAX. PROBE DIA. (0.9)/.035.
 - PARTS SUPPLIED IN STRIPS OF TEN OR AS LOOSE PIECE (SEE CHART).
 - VERSIONS 90059-0007, 90059-0009 PREFERRED IN EUROPE/AMERICA.
 - VERSIONS 90059-0013, 90059-0014, 90059-0015 PREFERRED IN FAR EAST.
 - DIMENSION APPLIES TO MOULDED HOUSING ONLY. BREAK-OFF (5.10)/.201 MAX.

CHANGE IN LEAD TO TIN. UPDATE LOOSE PKT. QTY. EC NO. E2004-0584 DRWN: M MGS 04/01/05 CHK: / / / / / APPR: / / / / /	QUALITY SYMBOLS MAJOR CRITICAL C	GENERAL TOLERANCES: (UNLESS SPECIFIED)	SCALE 10:1	DESIGN UNITS <input checked="" type="checkbox"/> mm <input type="checkbox"/> INCH	THIRD ANGLE PROJECTION	DIMENSIONS: <input checked="" type="checkbox"/> mm <input type="checkbox"/> INCH <input type="checkbox"/> mm <input type="checkbox"/> mm ONLY	SHT 2	REV AR	
		4 PLACES ±0.10	mm INCH	DRAWN BY & DATE mcc 86/04/08	TITLE: 2.54mm C-Grid Micro Shnt	REVISIONS 1 AR			
AR	REV	DRAFT WHERE APPLICABLE MUST REMAIN WITHIN DIMENSIONS	3 PLACES ±0.10	CHECKED BY & DATE dbrennan 00/07/26	APPROVED BY & DATE mwhite 00/07/26	CAD FILENAME	MATERIAL NO. SEE CHART	DRAWING NO. SDA-90059	SHEET NO. 1 of 2
			1 PLACE ±0.10	ANGULAR: ± 1°	CAD FILENAME	MATERIAL NO. SEE CHART	DRAWING NO. SDA-90059	SHEET NO. 1 of 2	SIZE B