

Product Is Not Recommended for New Design.
The next generation of higher performance products are in development. Visit our online Selector Guides (<http://mot-sps.com/rf/sg/sg.html>) for scheduled introduction dates.

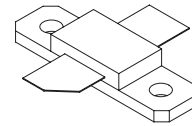
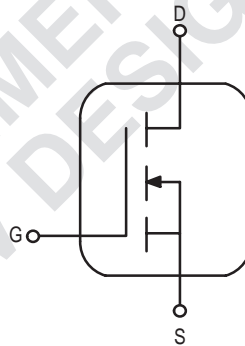
MRF373
MRF373S

60 W, 470 – 860 MHz, 28 V
LATERAL N-CHANNEL
BROADBAND
RF POWER MOSFETS

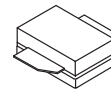
The RF MOSFET Line
RF Power
Field Effect Transistors
N-Channel Enhancement-Mode Lateral MOSFETs

Designed for broadband commercial and industrial applications at frequencies from 470 – 860 MHz. The high gain and broadband performance of this device makes it ideal for large-signal, common source amplifier applications in 28 volt transmitter equipment.

- Guaranteed CW Performance at 860 MHz, 28 Volts, Narrowband Fixture
Output Power – 60 Watts
Power Gain – 13 dB
Efficiency – 50%
- Typical Performance at 860 MHz, 28 Volts, Broadband Push-Pull Fixture
Output Power – 100 Watts (PEP)
Power Gain – 11.2 dB
Efficiency – 40%
IMD – -30 dBc
- Excellent Thermal Stability
- 100% Tested for Load Mismatch Stress at All Phase Angles with 5:1 VSWR @ 28 Vdc, 860 MHz, 60 Watts CW



CASE 360B-03, STYLE 1
(MRF373)



CASE 360C-03, STYLE 1
(MRF373S)

MAXIMUM RATINGS

| Rating | Symbol | Value | Unit |
|--|------------------|--------------|--------------------------|
| Drain-Source Voltage | V_{DSS} | 65 | Vdc |
| Gate-Source Voltage | V_{GS} | ± 20 | Vdc |
| Drain Current – Continuous | I_D | 7 | Adc |
| Total Device Dissipation @ $T_C = 25^\circ\text{C}$ Derate above 25°C | MRF373S P_D | 173 1.33 | W W/ $^\circ\text{C}$ |
| Storage Temperature Range | T_{stg} | - 65 to +150 | $^\circ\text{C}$ |
| Operating Junction Temperature | T_J | 200 | $^\circ\text{C}$ |

THERMAL CHARACTERISTICS

| Characteristic | Symbol | Max | Unit |
|--------------------------------------|----------------------------|------|---------------------------|
| Thermal Resistance, Junction to Case | MRF373S $R_{\theta JC}$ | 0.75 | $^\circ\text{C}/\text{W}$ |
| Thermal Resistance, Junction to Case | MRF373 $R_{\theta JC}$ | 1 | $^\circ\text{C}/\text{W}$ |

NOTE – **CAUTION** – MOS devices are susceptible to damage from electrostatic charge. Reasonable precautions in handling and packaging MOS devices should be observed.

ELECTRICAL CHARACTERISTICS ($T_C = 25^\circ\text{C}$ unless otherwise noted)

| Characteristic | Symbol | Min | Typ | Max | Unit |
|----------------|--------|-----|-----|-----|------|
|----------------|--------|-----|-----|-----|------|

OFF CHARACTERISTICS

| | | | | | |
|--|---------------|----|---|---|-----------------|
| Drain–Source Breakdown Voltage ($V_{GS} = 0, I_D = 1 \mu\text{A}$) | $V_{(BR)DSS}$ | 65 | – | – | Vdc |
| Zero Gate Voltage Drain Current ($V_{DS} = 28 \text{ V}, V_{GS} = 0$) | I_{DSS} | – | – | 1 | μAdc |
| Gate–Source Leakage Current ($V_{GS} = 20 \text{ V}, V_{DS} = 0$) | I_{GSS} | – | – | 1 | μAdc |

ON CHARACTERISTICS

| | | | | | |
|--|--------------|-----|-----|-----|-----|
| Gate Threshold Voltage ($V_{DS} = 10 \text{ V}, I_D = 200 \mu\text{A}$) | $V_{GS(th)}$ | 2 | 3 | 4 | Vdc |
| Gate Quiescent Voltage ($V_{DS} = 28 \text{ V}, I_D = 100 \text{ mA}$) | $V_{GS(Q)}$ | 3 | 4 | 5 | Vdc |
| Drain–Source On–Voltage ($V_{GS} = 10 \text{ V}, I_D = 3 \text{ A}$) | $V_{DS(on)}$ | – | 0.6 | 0.8 | Vdc |
| Forward Transconductance ($V_{DS} = 10 \text{ V}, I_D = 3 \text{ A}$) | g_{fs} | 2.2 | 2.9 | – | S |

DYNAMIC CHARACTERISTICS

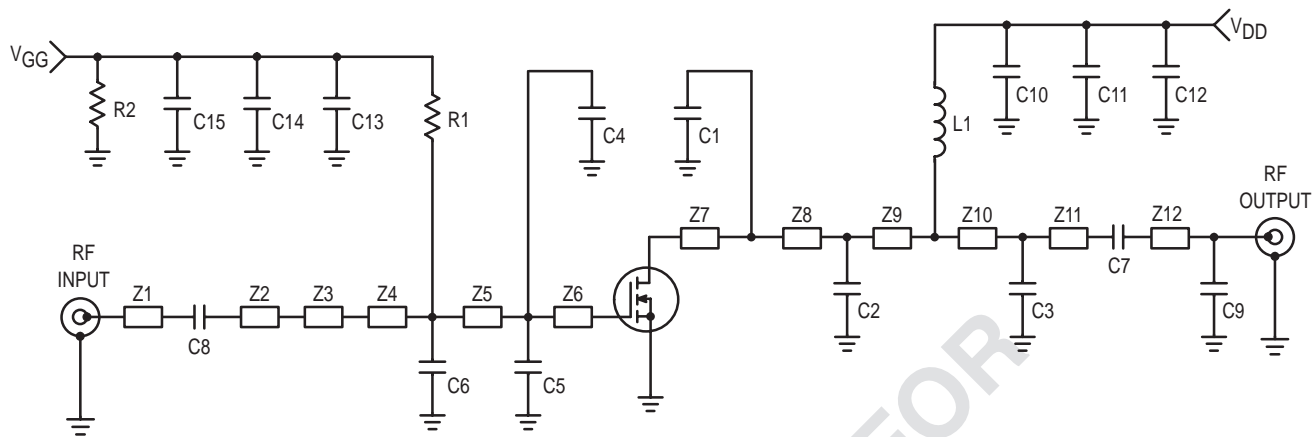
| | | | | | |
|--|-----------|---|----|---|----|
| Input Capacitance ($V_{DS} = 28 \text{ V}, V_{GS} = 0, f = 1 \text{ MHz}$) | C_{iss} | – | 79 | – | pF |
| Output Capacitance ($V_{DS} = 28 \text{ V}, V_{GS} = 0, f = 1 \text{ MHz}$) | C_{oss} | – | 46 | – | pF |
| Reverse Transfer Capacitance ($V_{DS} = 28 \text{ V}, V_{GS} = 0, f = 1 \text{ MHz}$) | C_{rss} | – | 4 | – | pF |

FUNCTIONAL CHARACTERISTICS, CW Operation

| | | | | | |
|---|----------|--------------------------------|------|---|----|
| Common Source Power Gain ($V_{DD} = 28 \text{ V}, P_{out} = 60 \text{ W}, I_{DQ} = 200 \text{ mA}, f = 860 \text{ MHz}$) | G_{ps} | 13 | 14.7 | – | dB |
| Drain Efficiency ($V_{DD} = 28 \text{ V}, P_{out} = 60 \text{ W}, I_{DQ} = 200 \text{ mA}, f = 860 \text{ MHz}$) | η | 50 | 54 | – | % |
| Load Mismatch ($V_{DD} = 28 \text{ V}, P_{out} = 60 \text{ W}, I_{DQ} = 200 \text{ mA}, f = 860 \text{ MHz}$, Load VSWR at 5:1 at All Phase Angles) | ψ | No Degradation in Output Power | | | |

TYPICAL CHARACTERISTICS, 2 Tone Operation, Push Pull Configuration (MRF373S), Broadband Fixture

| | | | | | |
|---|----------|---|------|---|-----|
| Common Source Power Gain ($V_{DD} = 28 \text{ Vdc}, P_{out} = 100 \text{ W PEP}, I_{DQ} = 400 \text{ mA}$, $f_1 = 860.0 \text{ MHz}, f_2 = 866 \text{ MHz}$) | G_{ps} | – | 11.2 | – | dB |
| Drain Efficiency ($V_{DD} = 28 \text{ Vdc}, P_{out} = 100 \text{ W PEP}, I_{DQ} = 400 \text{ mA}$, $f_1 = 860.0 \text{ MHz}, f_2 = 866 \text{ MHz}$) | η | – | 40 | – | % |
| Third Order Intermodulation Distortion ($V_{DD} = 28 \text{ Vdc}, P_{out} = 100 \text{ W PEP}, I_{DQ} = 400 \text{ mA}$, $f_1 = 860.0 \text{ MHz}, f_2 = 866 \text{ MHz}$) | IMD | – | –30 | – | dBc |



| | | | |
|------------|---|---------------------|---|
| C1 | 4.7 pF, B Case Chip Capacitor, ATC | Connectors | N-Type (female), M/A Com P/N 3052-1648-10 |
| C2 | 15 pF, B Case Chip Capacitor, ATC | PCB | MRF373 Printed Circuit Board Rev 01, CuClad 250 (GX-0300-55), height 30 mils, $\epsilon_r = 2.55$ |
| C3 | 6.8 pF, B Case Chip Capacitor, ATC | Heatsink | Motorola P/N 95-11LDMOSKPS-1 |
| C4, C5, C6 | 10 pF, B Case Chip Capacitor, ATC | LDMOS | μ 250 3" x 5" Bedstead |
| C7, C8 | 47 pF, B Case Chip Capacitor, ATC | Insert | Motorola P/N 95-11LDMOSKPS-2 |
| C9 | 0.2 pF, B Case Chip Capacitor, ATC | End Plates | 2) Motorola P/N 93-3MB-9, End Plate for Type-N Connector |
| C10, C13 | 300 pF, B Case Chip Capacitor, ATC, Side Mounted | Banana Jack and Nut | |
| C11 | 2) 2.2 μ F, 50 V, Kemet P/N C1825C225 | | |
| C12 | 22 μ F, 50 V, Kemet P/N T491D226K50AS | Brass Banana Jack | |
| C14 | 2) 1.0 μ F, 50 V, Kemet P/N C1825C105 | | |
| C15 | 10 μ F, 35 V, Kemet P/N T491D106K35AS | | |
| L1 | 22 nH, Coilcraft P/N B07T | | |
| R1 | 1.2 k Ω , Vishay Dale Chip Resistor (1206) | | |
| R2 | 12 k Ω , Vishay Dale Chip Resistor (1206) | | |

Figure 1. Single-Ended Narrowband Test Circuit Schematic (MRF373)

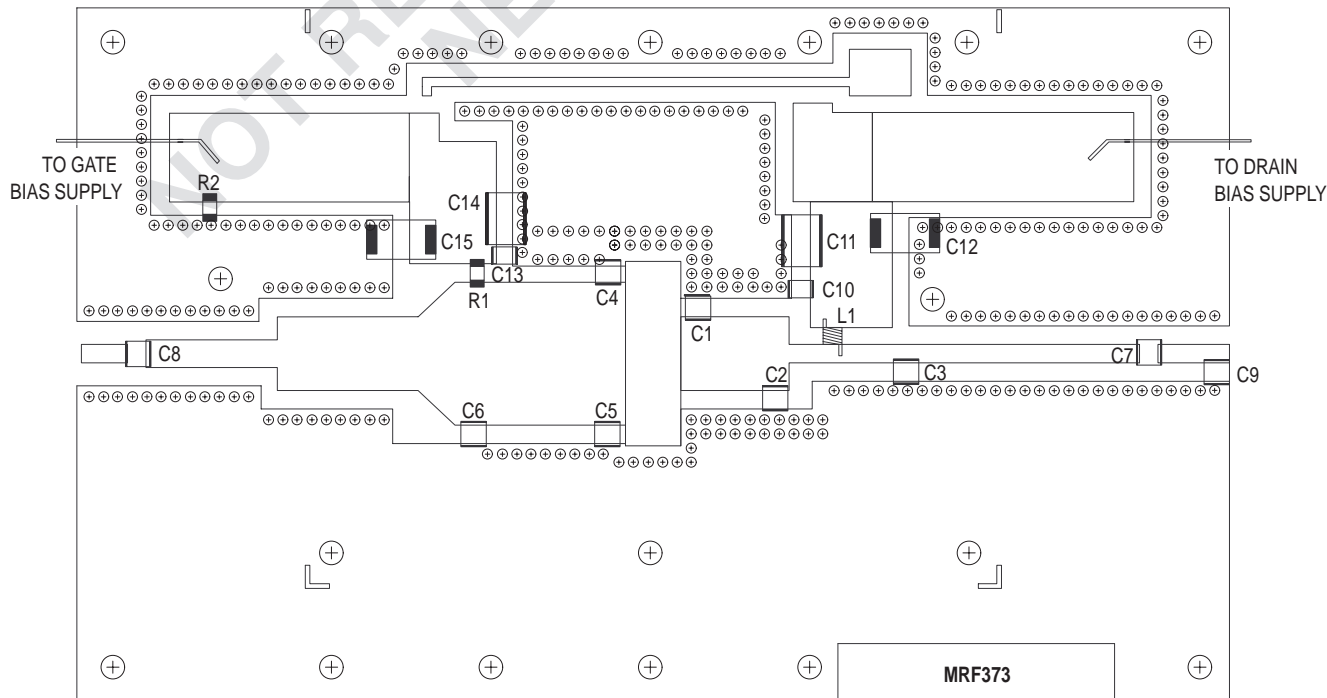


Figure 2. Single-Ended Narrowband Test Circuit Layout (Suitable for Use with MRF373)

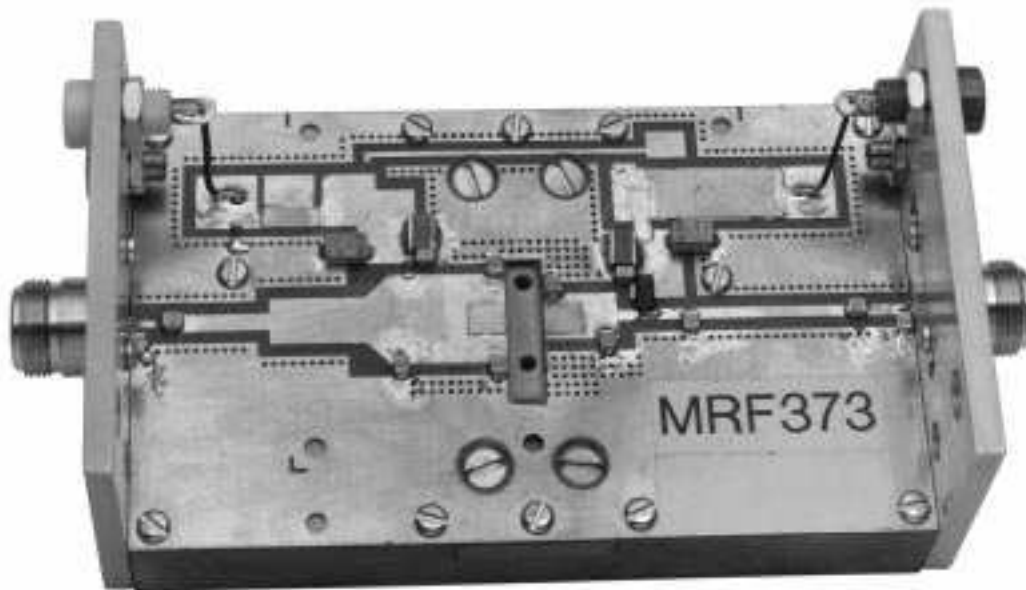
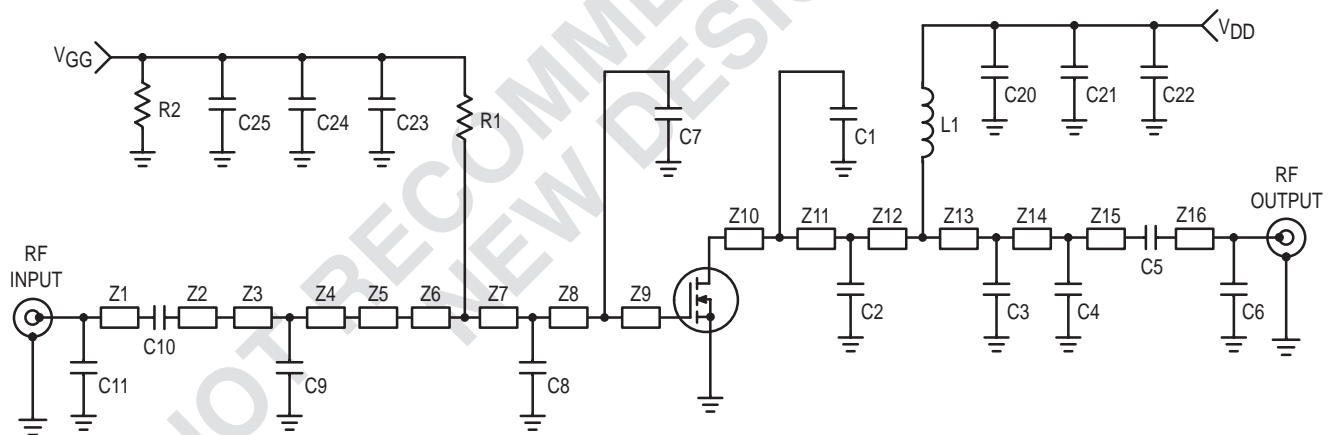


Figure 3. MRF373 Narrowband Test Fixture Photo



| | |
|----------|---|
| C1, C2 | 18 pF, B Case Chip Capacitor, ATC |
| C3 | 12 pF, B Case Chip Capacitor, ATC |
| C4, C11 | 0.8 pF, B Case Chip Capacitor, ATC |
| C5, C10 | 68 pF, B Case Chip Capacitor, ATC |
| C6 | 0.3 pF, B Case Chip Capacitor, ATC |
| C7 | 15 pF, B Case Chip Capacitor, ATC |
| C8 | 10 pF, B Case Chip Capacitor, ATC |
| C9 | 1.8 pF, B Case Chip Capacitor, ATC |
| C20, C23 | 300 pF, B Case Chip Capacitor, ATC, Side Mounted |
| C21 | 2) 2.2 μ F, 100 V, Vishay P/N VJ3640Y225KXBAT |
| C24 | 2) 1.0 μ F, 50 V, Kemet P/N C1825C105 |
| C22 | 22 μ F, 35 V, Kemet P/N T491D226K35AS |
| C25 | 10 μ F, 35 V, Kemet P/N T491D106K35AS |
| L1 | 22 nH, Coilcraft P/N B07T |
| R1 | 1.2 k Ω , Vishay Dale Chip Resistor (1206) |
| R2 | 12 k Ω , Vishay Dale Chip Resistor (1206) |

| | |
|---------------------|--|
| Connectors | N-Type (female), M/A Com P/N 3052-1648-10 |
| PCB | MRF373 Printed Circuit Board Rev 01, CuClad 250 (GX-0300-55), height 30 mils, $\epsilon_r = 2.55$ (new PCB's available from CMR) |
| Heatsink | Motorola P/N 95-11LDMOSKPS-1 LDMOS μ 250 3" x 5" Bedstead |
| Insert | Motorola P/N 95-11LDMOSKPS-2S Insert for LD MOS μ 250S 3" x 5" Bedstead |
| End Plates | 2) Motorola P/N 93-3MB-9, End Plate for Type-N Connector |
| Banana Jack and Nut | 2) Johnson P/N 108-0904-001 |
| Brass Banana Jack | 2) H.H. Smith P/N SM-101 |

Figure 4. Single-Ended Narrowband Test Circuit Schematic (MRF373S)

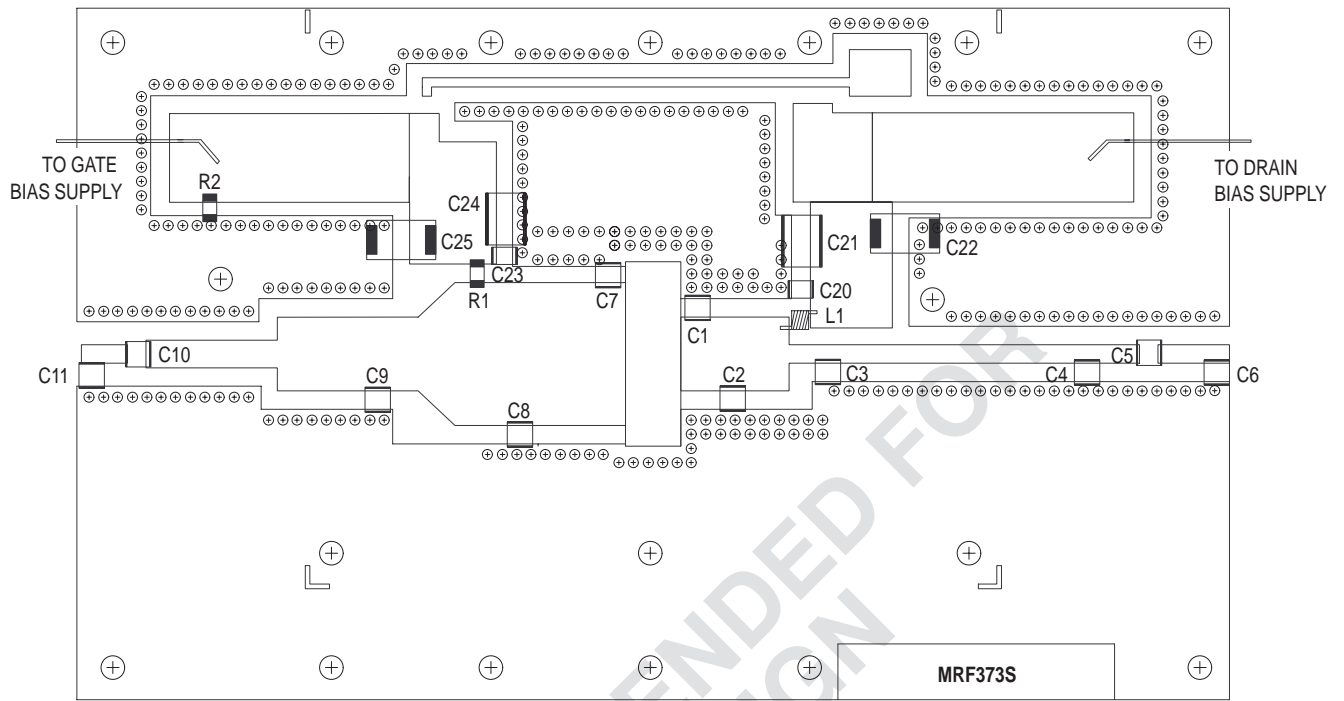


Figure 5. Single-Ended Narrowband Test Circuit Layout
(Suitable for Use with MRF373S)

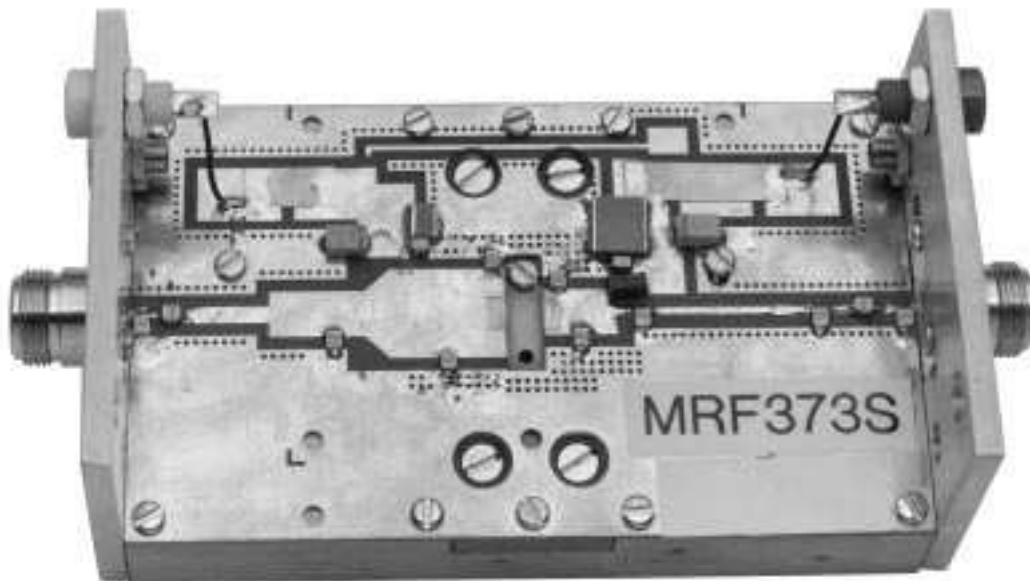


Figure 6. MRF373S Narrowband Test Circuit Photo

TYPICAL CHARACTERISTICS FOR MRF373 IN SINGLE-ENDED FIXTURE

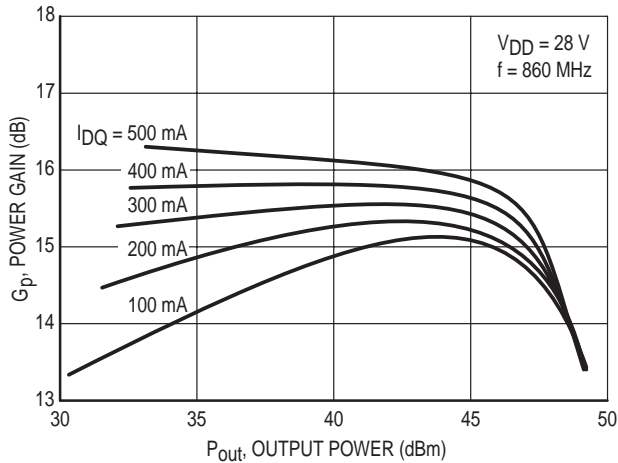


Figure 7. Power Gain versus Output Power

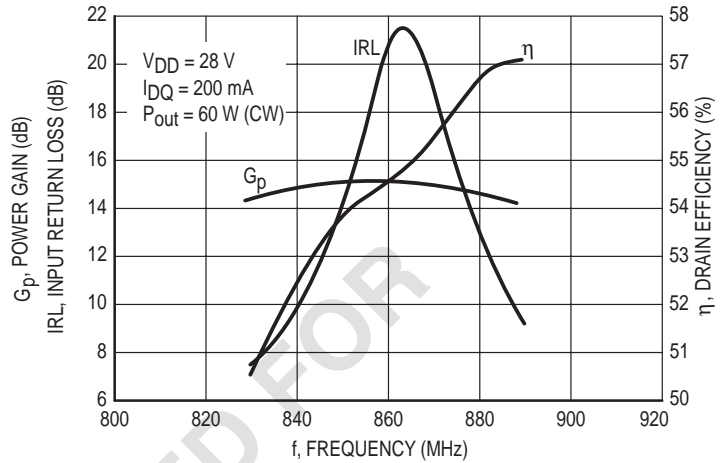


Figure 8. Performance in Narrowband Circuit

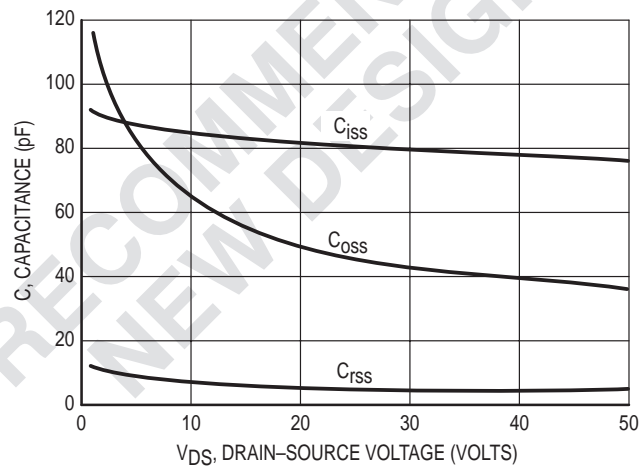
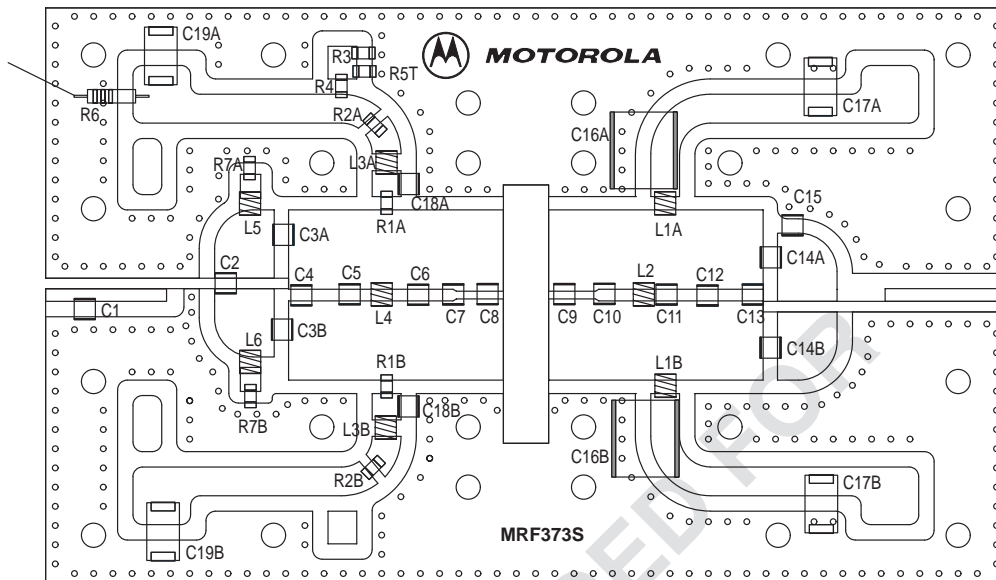


Figure 9. Capacitance versus Voltage

Table 1. Common Source S-Parameters ($V_{DS} = 28\text{ V}$, $I_D = 2.0\text{ A}$)

| f MHz | S11 | | S21 | | S12 | | S22 | |
|----------|-------|--------|------|--------|-------|--------|-------|--------|
| | S11 | ϕ | S21 | ϕ | S12 | ϕ | S22 | ϕ |
| 400 | 0.921 | 182 | 2.23 | 52 | 0.009 | 39 | 0.824 | 184 |
| 450 | 0.922 | 181 | 1.95 | 49 | 0.009 | 53 | 0.832 | 184 |
| 500 | 0.924 | 180 | 1.70 | 46 | 0.010 | 64 | 0.841 | 184 |
| 550 | 0.926 | 179 | 1.49 | 42 | 0.011 | 72 | 0.851 | 183 |
| 600 | 0.929 | 178 | 1.31 | 38 | 0.013 | 78 | 0.860 | 183 |
| 650 | 0.932 | 177 | 1.16 | 35 | 0.015 | 81 | 0.870 | 182 |
| 700 | 0.936 | 176 | 1.03 | 31 | 0.017 | 82 | 0.881 | 182 |
| 750 | 0.940 | 176 | 0.93 | 28 | 0.019 | 82 | 0.892 | 181 |
| 800 | 0.945 | 175 | 0.84 | 26 | 0.021 | 82 | 0.904 | 180 |
| 850 | 0.951 | 174 | 0.78 | 24 | 0.023 | 80 | 0.917 | 180 |
| 900 | 0.957 | 173 | 0.72 | 24 | 0.025 | 78 | 0.929 | 179 |



Vertical Balun Mounting Detail

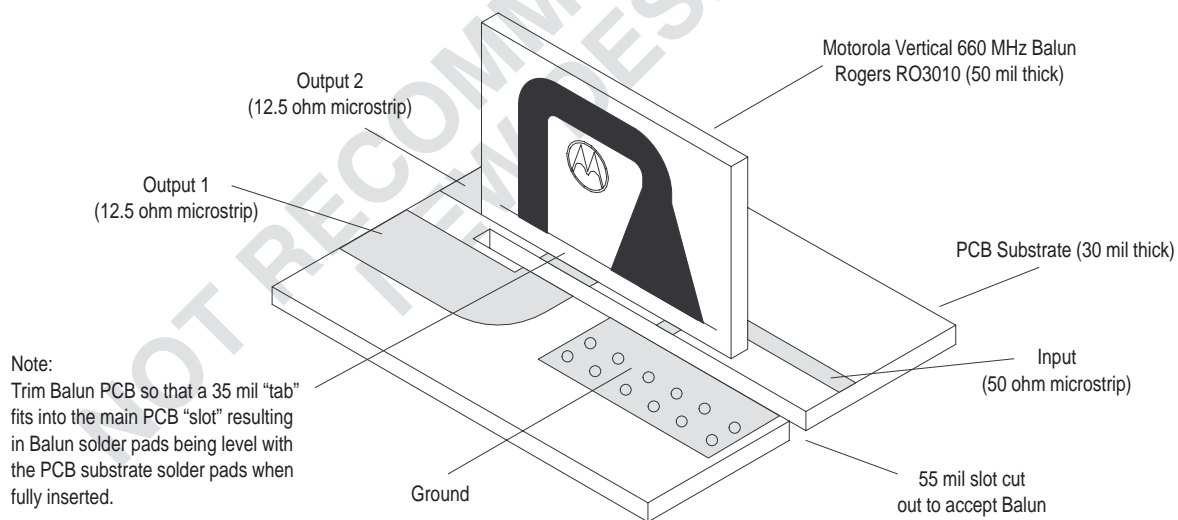


Figure 10. MRF373S Broadband Push-Pull Component Layout

Table 2. MRF373S Broadband Push–Pull Application Parts List

| Designation | Description |
|------------------------|---|
| C1 | 1.0 pF, AVX, P12101J1R0BBT |
| C2, C4, C10 | 10 pF, AVX, P12101J100GBT |
| C3A, B | 120 pF, 300 V, AVX, AQ149M121JAJBE |
| C5, C6, C9 | 12 pF, AVX, P12101J120GBT |
| C7, C8 | 18 pF, AVX, P12101J180GBT |
| C11 | 6.8 pF, AVX, P12101J6R8BBT |
| C12 | 4.7 pF, AVX, P12101J4R7BBT |
| C13, C18A, B | 3.3 pF, AVX, P12101J3R3BBT |
| C14A, B | 100 pF, 500 V, AVX, AQ147M101JAJBE |
| C15 | 2.7 pF, AVX, P12101J2R7BBT |
| C16A, B | 3.3 μ F, 100 V, Vitramon P/N VJ3640Y335KXBAT |
| C17A, B, C19A, B | 22 μ F, 35 V, Kemet P/N T491D226K35AS |
| L1A, B, L3A, B, L4, L5 | 8.0 nH, Coilcraft P/N A03T |
| L2, L6 | 12.5 nH, Coilcraft P/N A04T |
| R1A, B | 22 Ω , Vishay Dale Chip Resistor, 1/4 W (1206) |
| R2A, B | 10 Ω , Vishay Dale Chip Resistor, 1/4 W (1206) |
| R3 | 390 Ω , Vishay Dale Chip Resistor (1206) |
| R4 | 2.4 k Ω , Vishay Dale Chip Resistor (1206) |
| R5T | 470 Ω Thermistor, KOA SPEER MOT P/N 0680149M01 |
| PCB | MRF373 PP Printed Circuit Board Rev 2C, Rogers RO4350, Height 30 mils, $\epsilon_r = 3.48$ |
| Balun A, B | Vertical 660 MHz Broadband Balun, Printed Circuit Board Rev 01, Rogers RO3010, Height 50 mils, $\epsilon_r = 10.2$ |

TYPICAL TWO-TONE BROADBAND CHARACTERISTICS

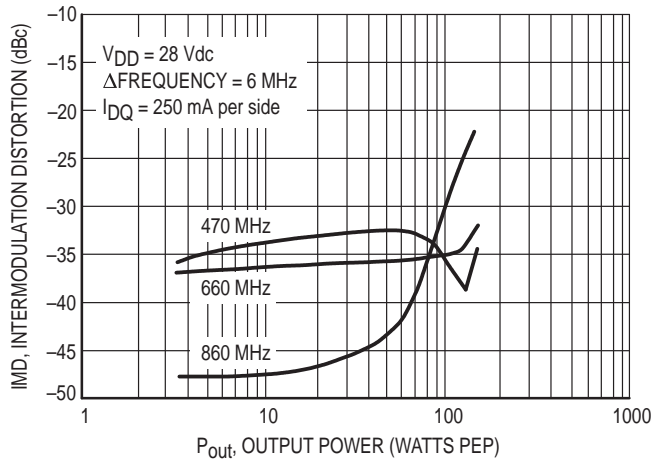


Figure 11. Intermodulation Distortion versus Output Power (MRF373S Broadband Push-Pull Fixture)

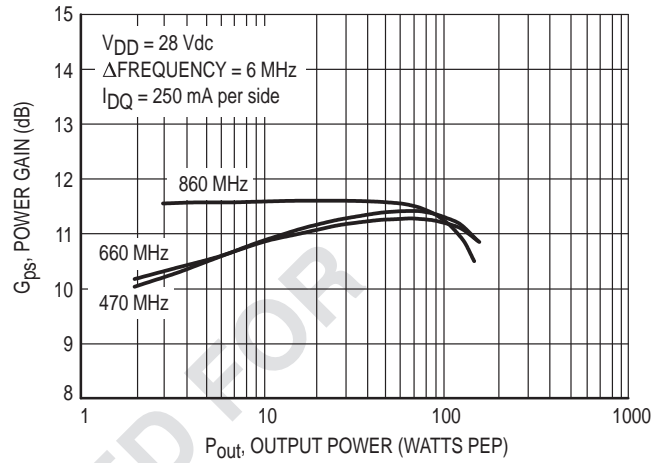


Figure 12. Broadband Power Gain versus Output Power (MRF373S Broadband Push-Pull Fixture)

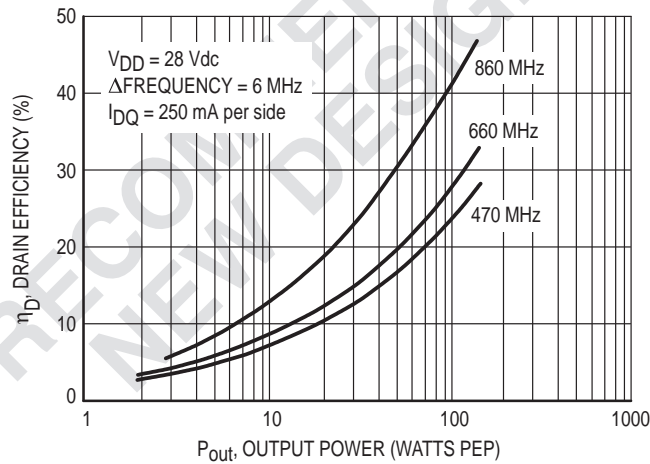


Figure 13. Efficiency versus Output Power (MRF373S Broadband Push-Pull Fixture)

NOTES

NOTES

PACKAGE DIMENSIONS

**CASE 360B-03
ISSUE D
(MRF373)**

NOTES:

- DIMENSIONING AND TOLERANCING PER ANSI Y14.5M, 1982.
- CONTROLLING DIMENSION: INCH.
- DIMENSION H IS MEASURED 0.030" AWAY FROM EDGE OF FLANGE.

| DIM | INCHES | | MILLIMETERS | |
|-----|-----------|-------|-------------|-------|
| | MIN | MAX | MIN | MAX |
| A | 0.790 | 0.810 | 20.07 | 20.57 |
| B | 0.220 | 0.240 | 5.59 | 6.09 |
| C | 0.125 | 0.175 | 3.18 | 4.45 |
| D | 0.205 | 0.225 | 5.21 | 5.71 |
| E | 0.050 | 0.070 | 1.27 | 1.77 |
| F | 0.004 | 0.006 | 0.11 | 0.15 |
| G | 0.562 BSC | | 14.27 BSC | |
| H | 0.077 | 0.087 | 1.96 | 2.21 |
| K | 0.215 | 0.255 | 5.47 | 6.47 |
| N | 0.350 | 0.370 | 8.89 | 9.39 |
| Q | 0.120 | 0.140 | 3.05 | 3.55 |

STYLE 1:
PIN 1. DRAIN
2. GATE
3. SOURCE

**CASE 360C-03
ISSUE B
(MRF373S)**

NOTES:

- DIMENSIONING AND TOLERANCING PER ANSI Y14.5M, 1982.
- CONTROLLING DIMENSION: INCH.

| DIM | INCHES | | MILLIMETERS | |
|-----|--------|-------|-------------|------|
| | MIN | MAX | MIN | MAX |
| A | 0.370 | 0.390 | 9.40 | 9.91 |
| B | 0.220 | 0.240 | 5.59 | 6.09 |
| C | 0.105 | 0.155 | 2.67 | 3.94 |
| D | 0.205 | 0.225 | 5.21 | 5.71 |
| E | 0.035 | 0.045 | 0.89 | 1.14 |
| F | 0.004 | 0.006 | 0.11 | 0.15 |
| H | 0.057 | 0.067 | 1.45 | 1.70 |
| K | 0.085 | 0.115 | 2.16 | 2.92 |
| N | 0.350 | 0.370 | 8.89 | 9.39 |

STYLE 1:
PIN 1. DRAIN
2. GATE
3. SOURCE

Motorola reserves the right to make changes without further notice to any products herein. Motorola makes no warranty, representation or guarantee regarding the suitability of its products for any particular purpose, nor does Motorola assume any liability arising out of the application or use of any product or circuit, and specifically disclaims any and all liability, including without limitation consequential or incidental damages. "Typical" parameters which may be provided in Motorola data sheets and/or specifications can and do vary in different applications and actual performance may vary over time. All operating parameters, including "Typicals" must be validated for each customer application by customer's technical experts. Motorola does not convey any license under its patent rights nor the rights of others. Motorola products are not designed, intended, or authorized for use as components in systems intended for surgical implant into the body, or other applications intended to support or sustain life, or for any other application in which the failure of the Motorola product could create a situation where personal injury or death may occur. Should Buyer purchase or use Motorola products for any such unintended or unauthorized application, Buyer shall indemnify and hold Motorola and its officers, employees, subsidiaries, affiliates, and distributors harmless against all claims, costs, damages, and expenses, and reasonable attorney fees arising out of, directly or indirectly, any claim of personal injury or death associated with such unintended or unauthorized use, even if such claim alleges that Motorola was negligent regarding the design or manufacture of the part. Motorola and are registered trademarks of Motorola, Inc. Motorola, Inc. is an Equal Opportunity/Affirmative Action Employer.

Mfax is a trademark of Motorola, Inc.

How to reach us:

USA/EUROPE/Locations Not Listed: Motorola Literature Distribution;
P.O. Box 5405, Denver, Colorado 80217. 1-303-675-2140 or 1-800-441-2447

JAPAN: Motorola Japan Ltd.; SPS, Technical Information Center, 3-20-1,
Minami-Azabu, Minato-ku, Tokyo 106-8573 Japan. 81-3-3440-3569

Customer Focus Center: 1-800-521-6274

Mfax™: RMFAX0@email.sps.mot.com – TOUCHTONE 1-602-244-6609
Motorola Fax Back System – US & Canada ONLY 1-800-774-1848
– http://sps.motorola.com/mfax/

ASIA/PACIFIC: Motorola Semiconductors H.K. Ltd.; Silicon Harbour Centre,
2, Dai King Street, Tai Po Industrial Estate, Tai Po, N.T., Hong Kong.
852-26668334

HOME PAGE: <http://motorola.com/sp/>



MRF373/D