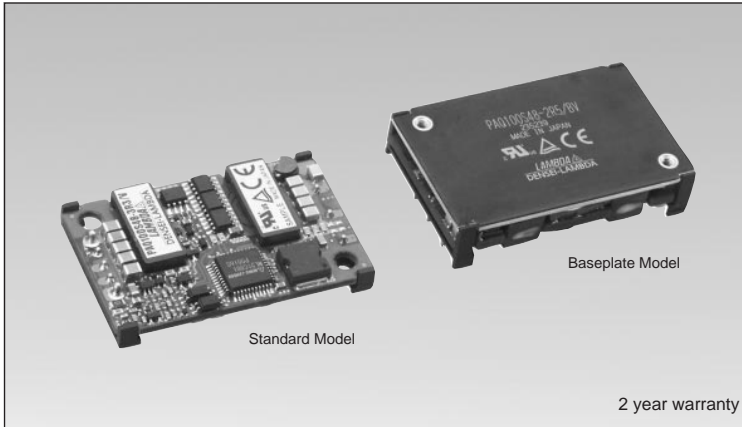


# PAQ-S-SERIES

Single output DC-DC power module for TELECOM



## Model name

# PAQ 50S 48-5/

Series Name: PAQ 50S  
 Output Wattage: 48  
 Rated input voltage: 5  
 Rated output voltage: 5  
 Option: /

Function: S: Simple function

Option:  
 blank: Protection functions (OVP, OCP) manual reset  
 V: Protection functions (OVP, OCP) auto-recovery  
 < Modified models >  
 \*Order for the following is acceptable upon request.  
 P: Positive logic ON/OFF control  
 B: with baseplate (H=12.7mm)

## Features

- Quarter-brick-sized profile: Efficiency 90% was achieved (5V output type) by applying Densai-Lambda's own technology in control IC and synchronous rectifier circuit.
- Compact and high power density: Height 8.5mm.
- Power density 5.5W/cc (PAQ100S48-5).
- Low output voltage model selectable: 1.2V - 5V (5 types).
- No heatsink required: Forced air cooled operation.
- Options: Protection functions auto-recovery.
- Patent and design registration pending.
- 2 year warranty.

## Specifications

1. Input voltage range	DC48V (DC36 ~ 76V)	
2. Output voltage adj range	1.2V / 1.8V / 2.5V types: -20~ +10%    3.3V / 5V types: -15 ~ +15%	
3. Efficiency (Typ.)	PAQ50S48	1.2V : 78% / 1.8V : 83% / 2.5V : 85% / 3.3V : 88% / 5V : 90%
	PAQ100S48	1.2V : 80% / 1.8V : 84% / 2.5V : 86% / 3.3V : 89% / 5V : 90%
4. Cooling Method	Forced air Cooling	
5. Operating ambient temperature	-40 ~ +85 deg. C (output derating required depending on the temperature condition)	
6. Withstand voltage	Input-output isolation type: DC1.5kV, 1 min., between input and output	
7. Standard functions	On/Off control, overcurrent protection, overvoltage protection, overtemperature protection	
8. Options	/V: Overvoltage protection auto-recovery, overcurrent protection auto-recovery	
9. Safety standard	Approved by UL60950, CSA60950,  and EN60950  CE marking applied	
10. Dimensions (W×H×D)	36.8mm × 8.5mm × 57.9mm (lead pin length excluded)	

- Request customer specification for further details of specifications, outline, characteristics, etc. Read the instruction manual before usage.
- Contact us about delivery before ordering.

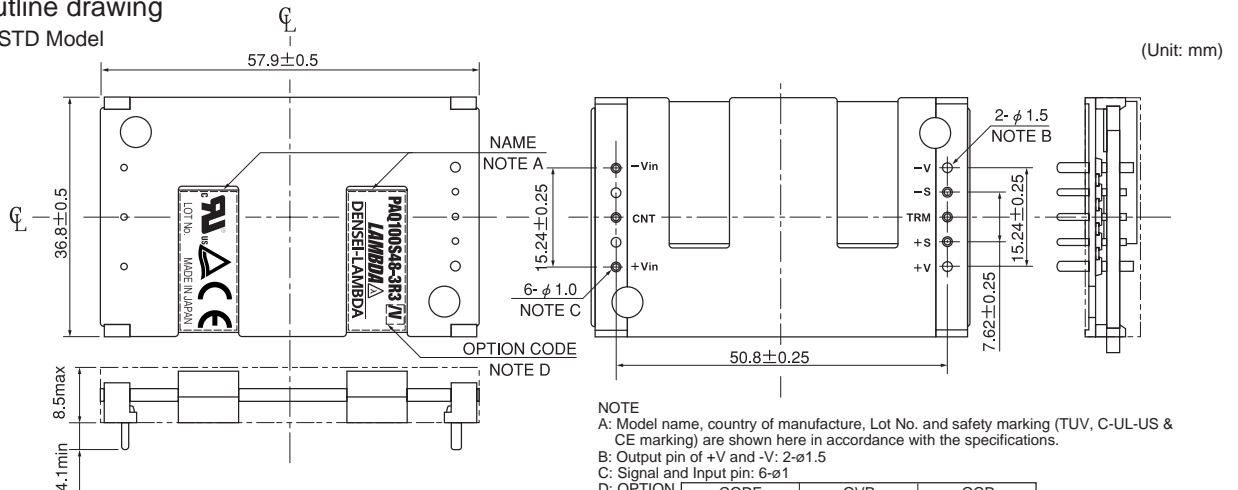
## Product lineup

Model name	Output voltage	Output current	Output power	UL	CSA	EN
PAQ50S48	PAQ50S48-1R2	1.2V	12A	14.4W	○	○
	PAQ50S48-1R8	1.8V	12A	21.6W	○	○
	PAQ50S48-2R5	2.5V	12A	30.0W	○	○
	PAQ50S48-3R3	3.3V	12A	39.6W	○	○
	PAQ50S48-5	5.0V	10A	50.0W	○	○
PAQ100S48	PAQ100S48-1R2	1.2V	25A	30.0W	○	○
	PAQ100S48-1R8	1.8V	25A	45.0W	○	○
	PAQ100S48-2R5	2.5V	25A	62.5W	○	○
	PAQ100S48-3R3	3.3V	25A	82.5W	○	○
	PAQ100S48-5	5.0V	20A	100.0W	○	○

○ : Safety standard approved

## Outline drawing

- STD Model



NOTE  
 A: Model name, country of manufacture, Lot No. and safety marking (TUV, C-UL-US & CE marking) are shown here in accordance with the specifications.

B: Output pin of +V and -V: 2-φ1.5

C: Signal and Input pin: 6-φ1

D: OPTION

CODE	OVP	OCP
NOTHING (STANDARD)	SHUT DOWN (ON/OFF CONT. RESET OR MANUAL RESET)	SHUT DOWN (ON/OFF CONT. RESET OR MANUAL RESET)
/V	AUTO RESTART	AUTO RESTART

Power Module