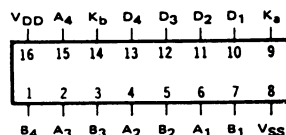


SCL4019B

QUAD AND-OR SELECT GATE



STATIC CHARACTERISTICS: ($V_{SS} = 0 V$)

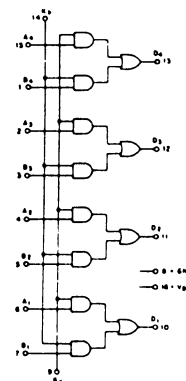
PARAMETER	CONDITIONS	V_{DD} (Vdc)	T_{LOW}^*		+ 25°C			T_{HIGH}^{**}		UNIT
			MIN	MAX	MIN	TYP	MAX	MIN	MAX	
QUIESCENT DEVICE CURRENT I_{DD}	$V_{IN} = V_{SS}$ OR V_{DD}	5		1		0.005	1		30	μA_{dc}
		10		2		0.01	2		60	
		15		4		0.02	4		120	

Note: * T_{LOW} = -55°C for C / H devices, -40°C for E / S devices, ** T_{HIGH} = +125°C for C / H devices, +85°C for E / S devices.

DYNAMIC CHARACTERISTICS: ($C_L = 50pF, T_A = 25^\circ C$)

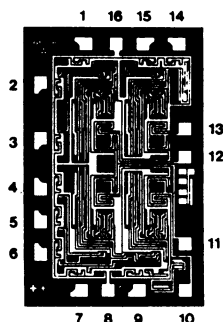
PARAMETER	V_{DD} (Vdc)	MINIMUM	TYPICAL	MAXIMUM	UNIT
PROPAGATION DELAY TIME t_{PLH}, t_{PHL} (FROM ANY INPUT)	5		150	300	ns
	10		60	120	
	15		50	100	
OUTPUT TRANSITION TIME t_{TLH}, t_{THL}	5		100	200	ns
	10		50	100	
	15		40	80	

LOGIC DIAGRAM



DIE DRAWING

SCL4019B
56 x 86 mils



Note: Refer to "SCL4000B SERIES FAMILY SPECIFICATIONS" for remaining Dynamic & Static Characteristics, and, for recommended and maximum operating conditions.