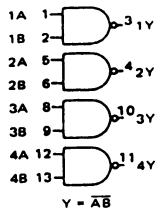
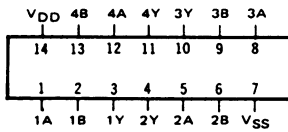
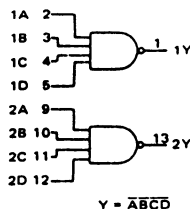
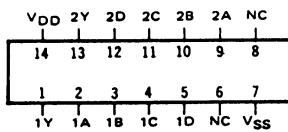


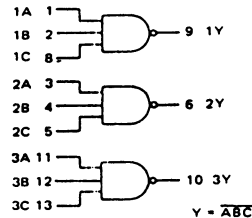
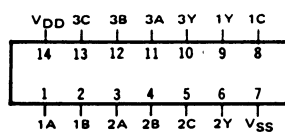
SCL4011B
QUAD TWO-INPUT NAND GATE



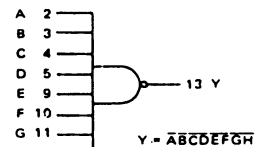
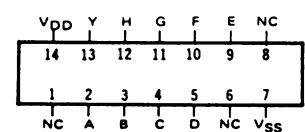
SCL4012B
DUAL FOUR INPUT NAND GATE



SCL4023B
TRIPLE THREE INPUT NAND GATE



SCL4068B
EIGHT INPUT NAND GATE



STATIC CHARACTERISTICS: ($V_{SS} = 0 V$)

PARAMETER	CONDITIONS	V_{DD} (Vdc)	T_{LOW}^*		+25°C			T_{HIGH}^{**}		UNIT
			MIN	MAX	MIN	TYP	MAX	MIN	MAX	
QUIESCENT DEVICE CURRENT I_{DD}	$V_{IN} = V_{SS}$ OR V_{DD}	5		0.05		0.0005	0.05		1.5	μA_{dc}
		10		0.1		0.001	0.1		3.0	
		15		0.2		0.002	0.2		6.0	

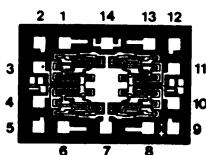
Note: * T_{LOW} = -55°C for C / H devices, -40°C for E / S devices, ** T_{HIGH} = +125°C for C / H devices, +85°C for E / S devices.

DYNAMIC CHARACTERISTICS: ($C_L = 50pF, T_A = 25^\circ C$)

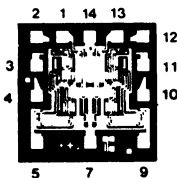
PARAMETER	V_{DD} Vdc	MINIMUM	TYPICAL	MAXIMUM	UNIT
PROPAGATION DELAY TIME t_{PLH}, t_{PHL}	5		125	250	ns
	10		60	120	
	15		45	90	
OUTPUT TRANSITION TIME t_{TLH}, t_{THL}	5		100	200	ns
	10		50	100	
	15		40	80	

DIE DRAWINGS

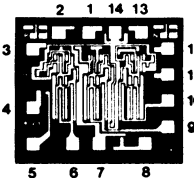
SCL4011B
53 x 37 mils



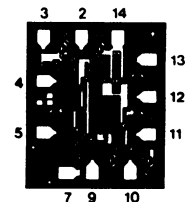
SCL4012B
43 x 43 mils



SCL4023B
53 x 46 mils



SCL4068B
48 x 52 mils



Note: Refer to "SCL4000B SERIES FAMILY SPECIFICATIONS" for remaining Dynamic & Static Characteristics, and, for recommended and maximum operating conditions.