



# RF Filters for Cellular Phones

## Series/Type: B7721

The following products presented in this data sheet are being withdrawn.

Ordering Code	Substitute Product	Date of Withdrawal	Deadline Last Orders	Last Shipments
B39941B7721C910	B39941B9401K610	2007-09-21	2007-12-31	2008-03-31

For further information please contact your nearest EPCOS sales office, which will also support you in selecting a suitable substitute. The addresses of our worldwide sales network are presented at [www.epcos.com/sales](http://www.epcos.com/sales).



**SAW Components**

**B7721**

**Low-Loss Filter for Mobile Communication**

**942,5 MHz**

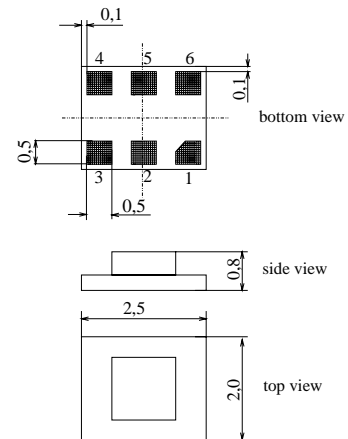
**Data Sheet**



**Features**

- Low-loss RF filter for mobile telephone EGSM system, receive path
- Low amplitude ripple
- Usable passband 35 MHz
- Unbalanced to balanced operation
- Excellent symmetry
- Impedance transformation from 50 Ω to 200 Ω
- Suitable for GPRS class 1 to 12
- Ceramic package for Surface Mounted Technology (SMT)
- Pb-free

**Chip sized SAW package DCS6K**



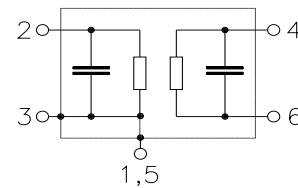
**Terminals**

- Ni, gold-plated

**Pin configuration**

- 2 Input, unbalanced
- 4, 6 Balanced outputs
- 1, 3, 5 To be grounded
- 1, 5 Case ground

Dimensions in mm



Type	Ordering code	Marking and Package according to	Packing according to
B7721	B39941-B7721-C910	C61157-A7-A97	F61074-V8153-Z000

**Electrostatic Sensitive Device (ESD)**

**Maximum ratings**

Operable temperature range	$T$	- 25 / + 85	°C	peak power of GSM signal, duty cycle 4:8
Storage temperature range	$T_{stg}$	- 40 / + 85	°C	
DC voltage	$V_{DC}$	5	V	
ESD voltage	$V_{ESD}$	100	V	
Input power at GSM850, GSM900	$P_{IN}$	15	dBm	
GSM1800 and GSM1900				
Tx bands				



SAW Components

B7721

Low-Loss Filter for Mobile Communication

942,5 MHz

Data Sheet



**Characteristics**

Operating temperature range:  $T = 25 \pm 2 \text{ }^\circ\text{C}$   
 Terminating source impedance:  $Z_S = 50 \text{ } \Omega$   
 Terminating load impedance:  $Z_L = 200 \text{ } \Omega \parallel 68 \text{ nH}$

		min.	typ.	max.	
<b>Center frequency</b>	$f_C$	—	942,5	—	MHz
<b>Maximum insertion attenuation</b>	$\alpha_{\max}$	—	2,4	2,8	dB
925,0 ... 960,0 MHz					
<b>Amplitude ripple (p-p)</b>	$\Delta\alpha$	—	1,1	1,5	dB
925,0 ... 960,0 MHz					
<b>Input VSWR</b>		—	2,2	2,4	
925,0 ... 960,0 MHz					
<b>Output VSWR</b>		—	2,0	2,4	
925,0 ... 960,0 MHz					
<b>Output phase balance</b> $\phi(S_{31}) - \phi(S_{21})$		-5	—	5	degree
925,0 ... 960,0 MHz					
<b>Output amplitude balance</b> $( S_{31}/S_{21} )$		-0,5	—	0,5	dB
925,0 ... 960,0 MHz					
<b>Diff. to common mode suppression</b>	$S_{sc12}$				
925,0 ... 960,0 MHz		20	38	—	dB
824,0 ... 995,0 MHz		20	29	—	
1648,0 ... 1990,0 MHz		20	50	—	
3296,0 ... 3980,0 MHz		20	31	—	
<b>Attenuation</b>	$\alpha$				
0,0 ... 880,0 MHz		50	64	—	dB
880,0 ... 905,0 MHz		30	39	—	
905,0 ... 915,0 MHz		20	26	—	
980,0 ... 1050,0 MHz		23	30	—	
1050,0 ... 1850,0 MHz		50	70	—	
1850,0 ... 1920,0 MHz		50	72	—	
1920,0 ... 2880,0 MHz		50	64	—	
2880,0 ... 4000,0 MHz		40	66	—	
4000,0 ... 6000,0 MHz		40	66	—	



SAW Components

B7721

Low-Loss Filter for Mobile Communication

942,5 MHz

Data Sheet



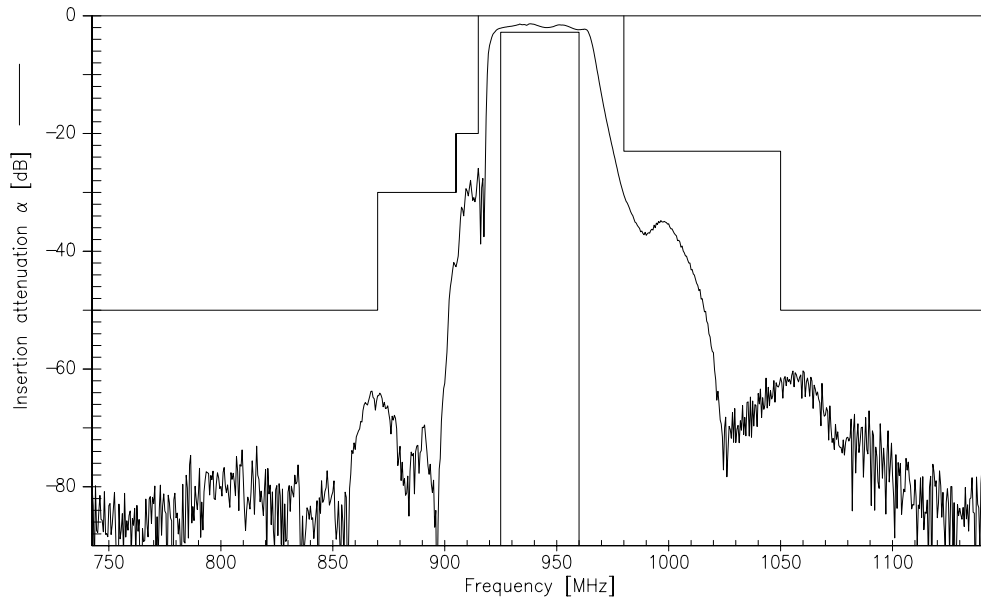
**Characteristics**

Operating temperature range:  $T = -10$  to  $+80$  °C  
 Terminating source impedance:  $Z_S = 50 \Omega$   
 Terminating load impedance:  $Z_L = 200 \Omega \parallel 68$  nH

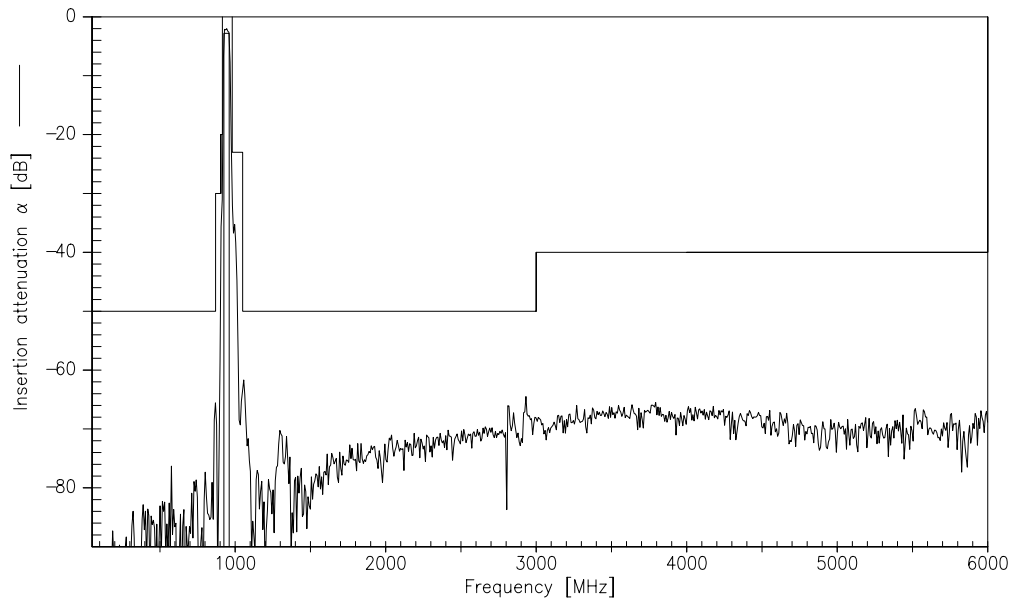
		min.	typ.	max.	
<b>Center frequency</b>	$f_C$	—	942,5	—	MHz
<b>Maximum insertion attenuation</b>	$\alpha_{max}$	—	2,4	3,0	dB
925,0 ... 960,0	MHz				
<b>Amplitude ripple (p-p)</b>	$\Delta\alpha$	—	1,1	1,7	dB
925,0 ... 960,0	MHz				
<b>Input VSWR</b>		—	2,2	2,4	
925,0 ... 960,0	MHz				
<b>Output VSWR</b>		—	2,0	2,4	
925,0 ... 960,0	MHz				
<b>Output phase balance</b> $\phi(S_{31})-\phi(S_{21})$		-5	—	5	degree
925,0 ... 960,0	MHz				
<b>Output amplitude balance</b> $( S_{31}/S_{21} )$		-0,5	—	0,5	dB
925,0 ... 960,0	MHz				
<b>Diff. to common mode suppression</b>	$S_{sc12}$				
925,0 ... 960,0	MHz	20	38	—	dB
824,0 ... 995,0	MHz	20	29	—	
1648,0 ... 1990,0	MHz	20	50	—	
3296,0 ... 3980,0	MHz	20	31	—	
<b>Attenuation</b>	$\alpha$				
0,0 ... 880,0	MHz	50	64	—	dB
880,0 ... 905,0	MHz	30	37	—	
905,0 ... 915,0	MHz	20	26	—	
980,0 ... 1050,0	MHz	23	29	—	
1050,0 ... 1850,0	MHz	50	70	—	
1850,0 ... 1920,0	MHz	50	72	—	
1920,0 ... 2880,0	MHz	50	64	—	
2880,0 ... 4000,0	MHz	40	66	—	
4000,0 ... 6000,0	MHz	40	66	—	



Transfer function (measurement)



Transfer function (wideband measurement)





**SAW Components**

**B7721**

**Low-Loss Filter for Mobile Communication**

**942,5 MHz**

Data Sheet



**Published by EPCOS AG**

**Surface Acoustic Wave Components Division, SAW MC WT**

**P.O. Box 80 17 09, 81617 Munich, GERMANY**

© EPCOS AG 2002. Reproduction, publication and dissemination of this brochure and the information contained therein without EPCOS' prior express consent is prohibited.

Purchase orders are subject to the General Conditions for the Supply of Products and Services of the Electrical and Electronics Industry recommended by the ZVEI (German Electrical and Electronic Manufacturers' Association), unless otherwise agreed.

This brochure replaces the previous edition.

For questions on technology, prices and delivery please contact the Sales Offices of EPCOS AG or the international Representatives.

Due to technical requirements components may contain dangerous substances. For information on the type in question please also contact one of our Sales Offices.