



Remote Control Receiver IC

PT2249A_PT2250A

DESCRIPTION

The PT2249A_PT2250A Series are infra-red remote control receivers utilizing CMOS Technology. Remote Control System can be constructed together with the PT2248 remote control encoder. The PT2249A Series are packaged in 16 pins DIP (PT2249A version is also available in SOP package) and are capable of controlling 10 functions while the PT2250A Series are packaged in 24 pins DIP and are capable of controlling 18 functions. Several options, inverting/non-inverting IR signal input and/or dependent/independent cyclic (toggle) outputs, are provided to fit different application needs.

FEATURES

- CMOS technology
- Low power consumption
- Very high noise immunity
- Able to output parallel multiple keying signals sent from the transmitter (PT2249A is able to output up to 5 functions simultaneously while PT2250A is able to output up to 6 functions simultaneously)
- Outputs for single pulse, hold pulse and cyclic pulse are provided
- A single terminal type oscillator by means of RC is provided
- Code detection circuit prevents interference from various types of machines and apparatus
- Digital filtering and code checking prevent interference from light sources such as PL lamp without sacrificing the receiving sensitivity

APPLICATIONS

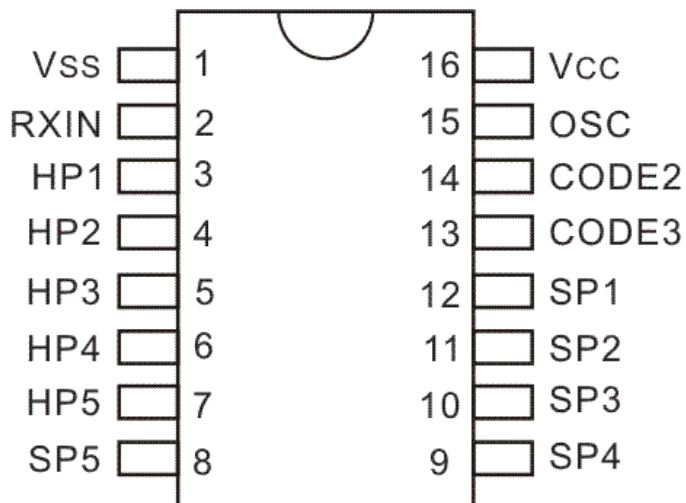
- Audio equipment remote control
- Television (TV) remote control
- Video Cassette Recorder (VCR) remote control



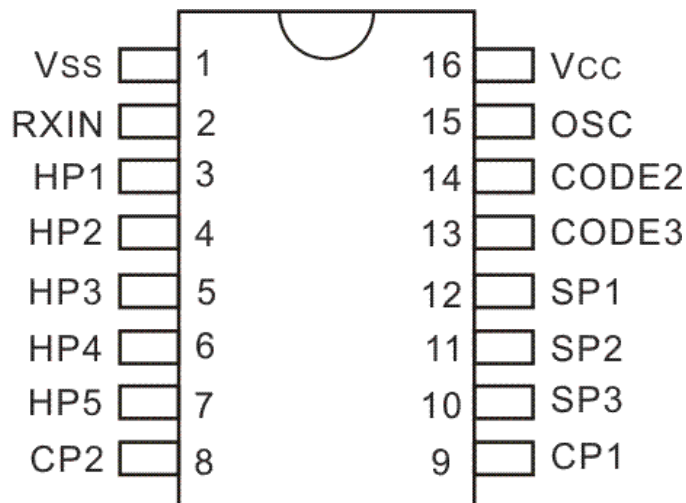
Remote Control Receiver IC

PT2249A_PT2250A

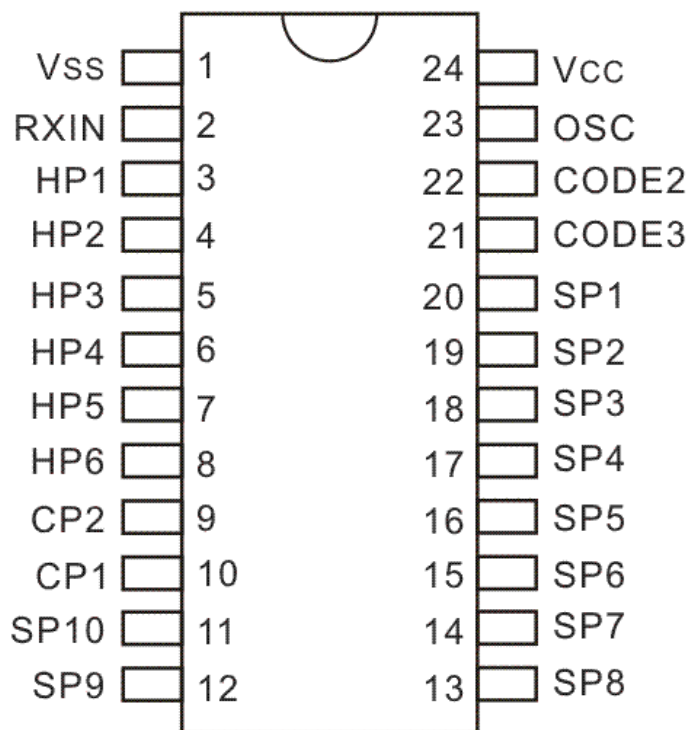
PIN CONFIGURATIONS



PT2249A
PT2249A-SN



PT2249AL
PT2249AHN



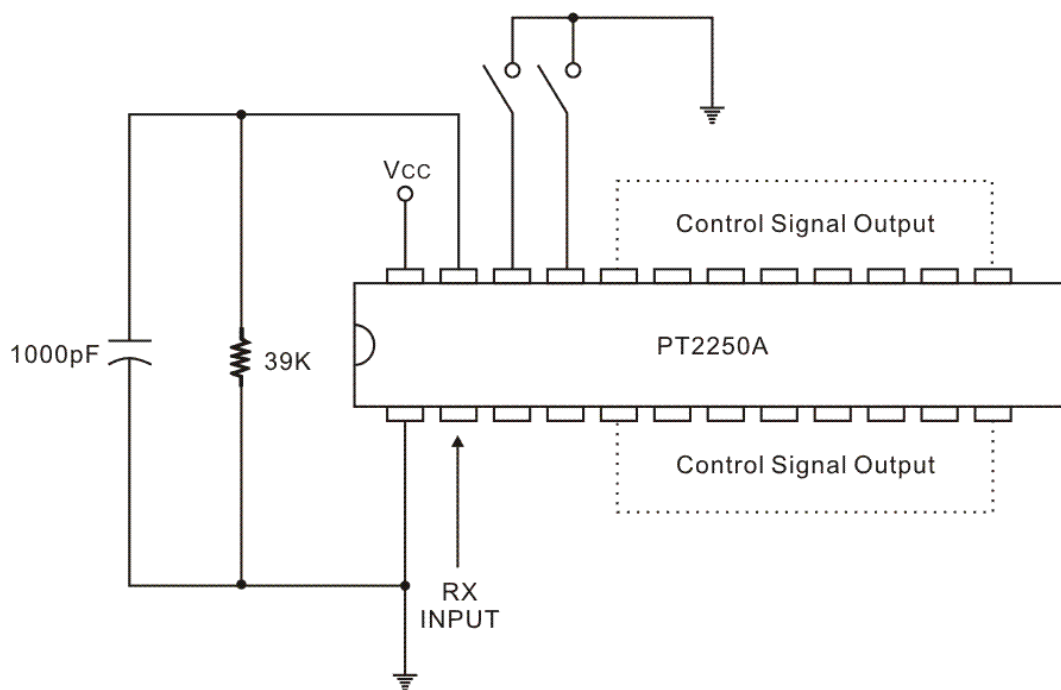
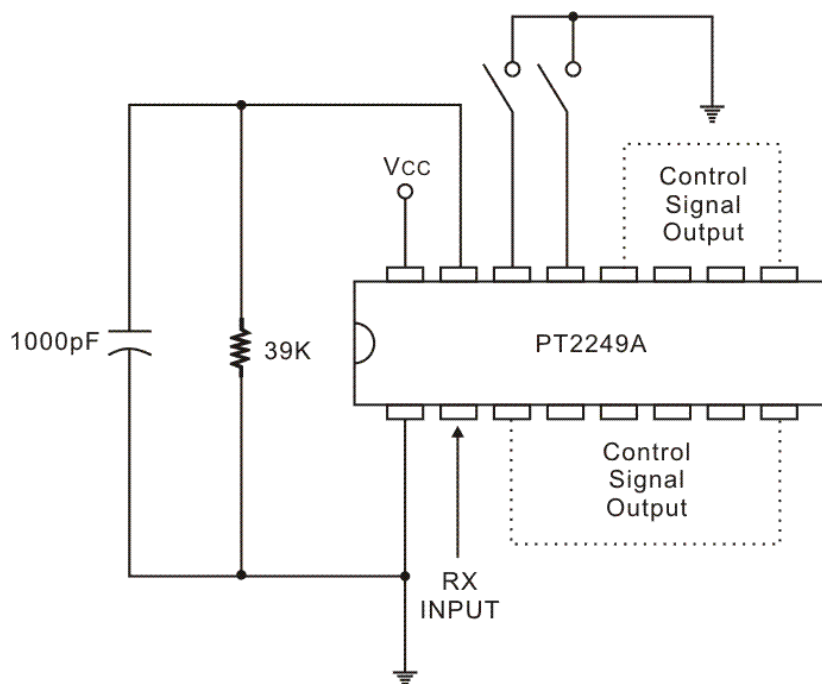
PT2250A



Remote Control Receiver IC

PT2249A_PT2250A

APPLICATION CIRCUIT





ORDER INFORMATION

Valid Part Number	Package Type	Top Code
PT2249A (L)	16 Pins, DIP, 300mil	PT2249A
PT2249AHN (L)	16 Pins, DIP, 300mil	PT2249AHN
PT2249AL (L)	16 Pins, DIP, 300mil	PT2249AL
PT2249A-SN (L)	16 Pins, SOP, 150mil	PT2249A-SN
PT2250A (L)	24 Pins, DIP, 600mil	PT2250A

Function:

1. A – Advanced Version
2. N – Inversed RXIN Input
3. L – Advanced Dependent Cyclic (Toggle) Outputs
4. H – Output Format same as “L”, except that when HP1 or HP2 is active, it will clear CP1.

Notes:

1. (L) = Lead Free
2. The Lead Free mark is put in front of the date code.