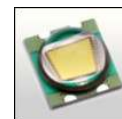


Lily-SST90 reflector for Luminus SST90 LEDs



LUMINUS
www.luminus.com

- Specially designed for Luminus SST-90 series of LEDs.
- Special care taken to make a uniform white or warm white illumination. Lenses work well with other colors, too.
- Lens material optical grade metallized PC. Allows use of high current and temperature conditions (130°C / 266°)
- Best available optical efficiency over 90%.
- Compact dimensions, D=22.6mm & H=13.6mm

LENS TYPES

NAME	ORDERING CODE	FWHM Angle
Lily-SST90 Spot	C10977_Lily-SST90-S	±12°
Lily-SST90 Medium	C10978_Lily-SST90-M	±13°
Lily-SST90 Wide	C10979_Lily-SST90-W	±28°

© Ledil Oy – PRELIMINARY - Subject to change without prior notice

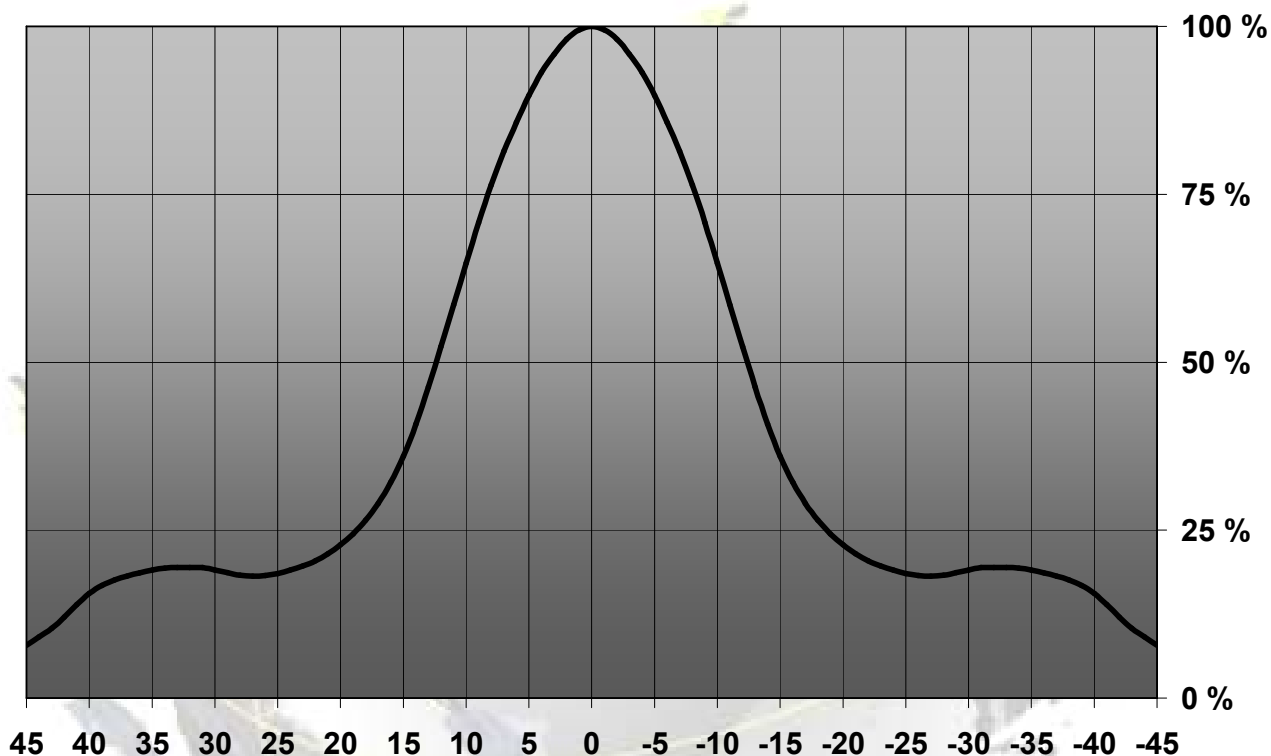
Ledil Oy
Tehdaskatu 13
FIN-24100 SALO, Finland

www.ledil.com
email: ledil@ledil.com
FAX: +358-2-733 8001

2009-10-07

MEASUREMENT DATA

Relative Intensity of C10977_Lily-SST90-S



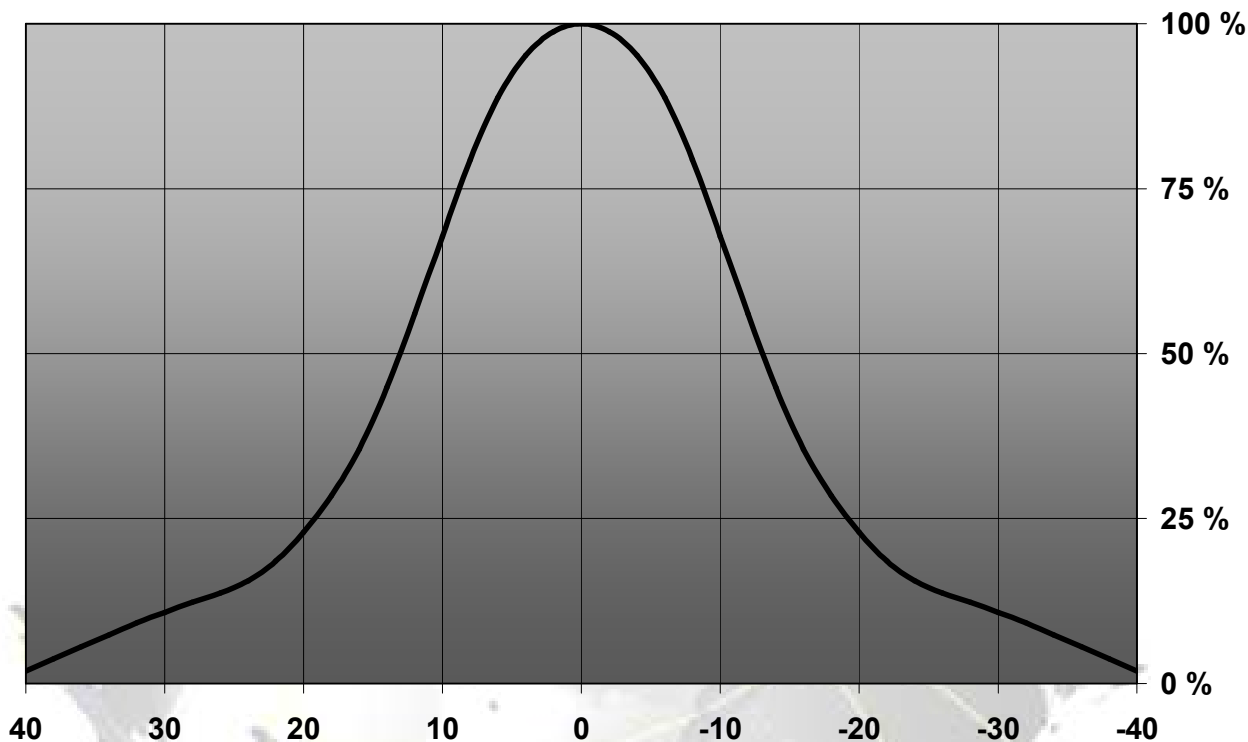
© Ledil Oy – PRELIMINARY - Subject to change without prior notice

Ledil Oy
 Tehdaskatu 13
 FIN-24100 SALO, Finland

www.ledil.com
 email: ledil@ledil.com
 FAX: +358-2-733 8001

2009-10-07

Relative Intensity of C10978_Lily-SST90-M



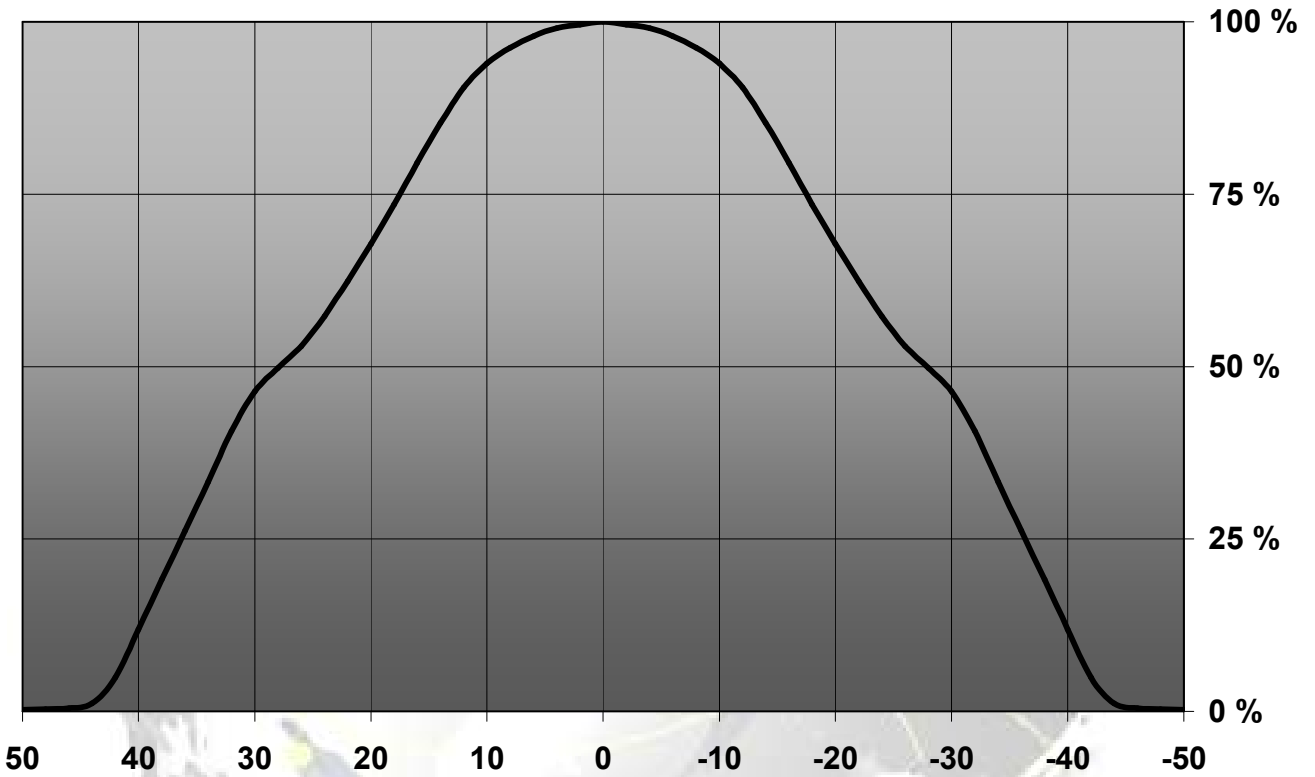
© Ledil Oy – PRELIMINARY - Subject to change without prior notice

Ledil Oy
Tehdaskatu 13
FIN-24100 SALO, Finland

www.ledil.com
email: ledil@ledil.com
FAX: +358-2-733 8001

2009-10-07

Relative Intensity of C10979_Lily-SST90-W



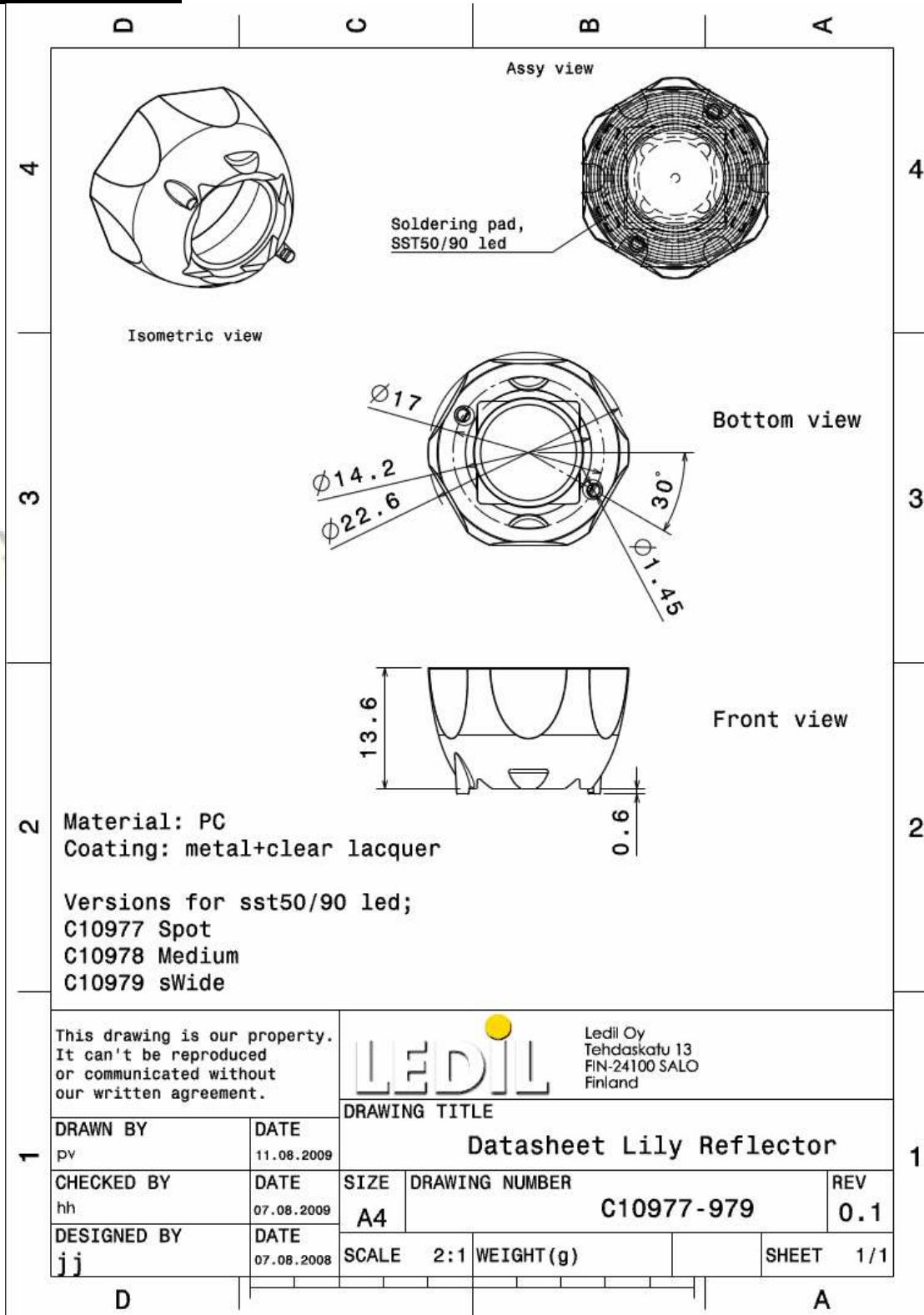
© Ledil Oy – PRELIMINARY - Subject to change without prior notice

Ledil Oy
Tehdaskatu 13
FIN-24100 SALO, Finland

www.ledil.com
email: ledil@ledil.com
FAX: +358-2-733 8001

2009-10-07

DRAWINGS



© Ledil Oy - PRELIMINARY - Subject to change without prior notice

Ledil Oy
 Tehdaskatu 13
 FIN-24100 SALO, Finland

www.ledil.com
 email: ledil@ledil.com
 FAX: +358-2-733 8001

2009-10-07