

## Lily-SST50 reflector for Luminus SST50 LEDs

LUMINUS  
www.luminus.com



- Specially designed for Luminus SST50 series of LEDs.
- Special care taken to make a uniform white or warm white illumination. Lenses work well with other colors, too.
- Lens material optical grade metallized PC. Allows use of high current and temperature conditions (130°C/220°F).
- Best available optical efficiency over 90%.
- Compact dimensions, for more information please check drawing at the bottom page.

### LENS TYPES

NAME	ORDERING CODE	FWHM Angle
Lily-SST50 Spot	C10977 Lily-SST50-S	±10°
Lily-SST50 Medium	C10978 Lily-SST50-M	±15°
Lily-SST50 Wide	C10979 Lily-SST50-W	±22.5°

© Ledil Oy – PRELIMINARY - Subject to change without prior notice

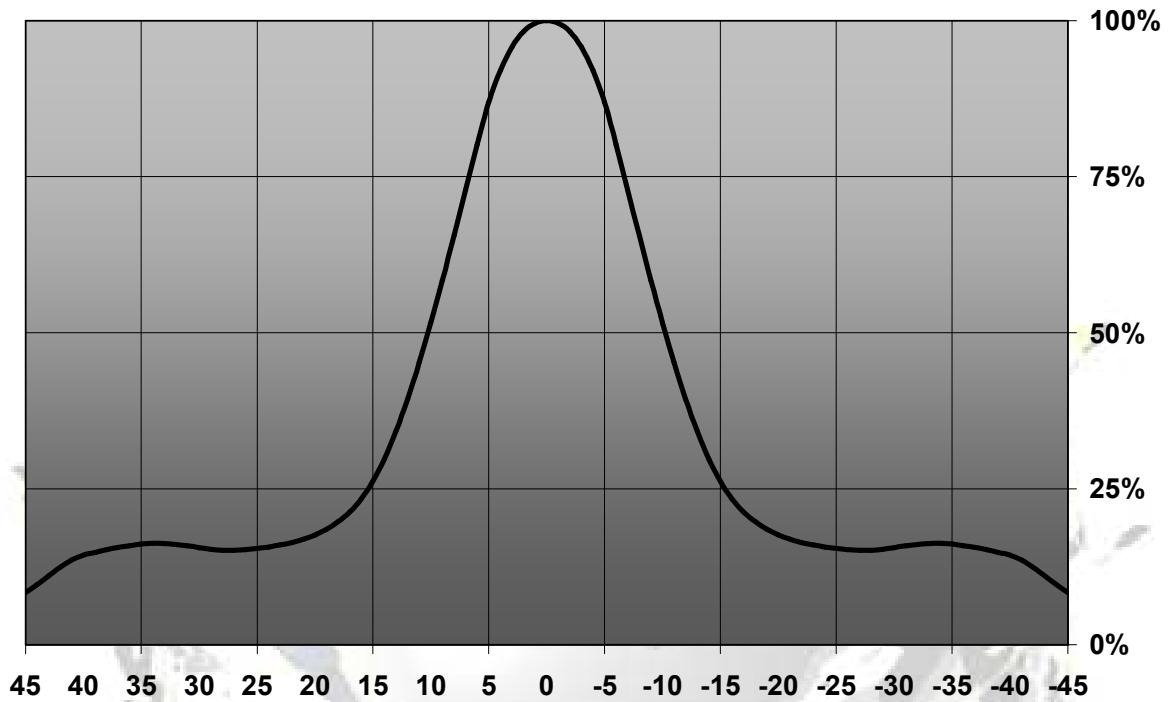
Ledil Oy  
Tehdaskatu 13  
FIN-24100 SALO, Finland

[www.ledil.com](http://www.ledil.com)  
email: [ledil@ledil.com](mailto:ledil@ledil.com)  
FAX: +358-2-733 8001

2009-10-07

## MEASUREMENT DATA

Relative Intensity of C10977\_Lily-SST50-S



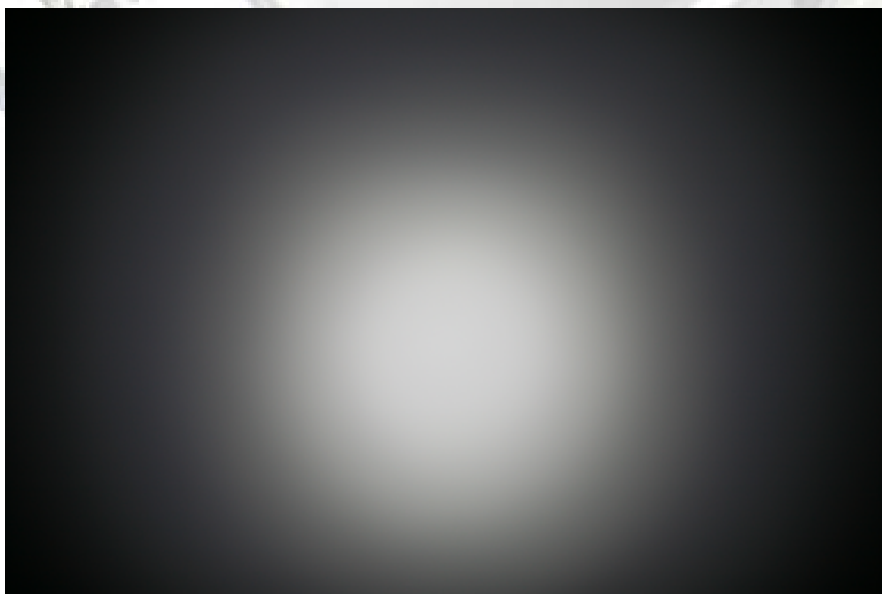
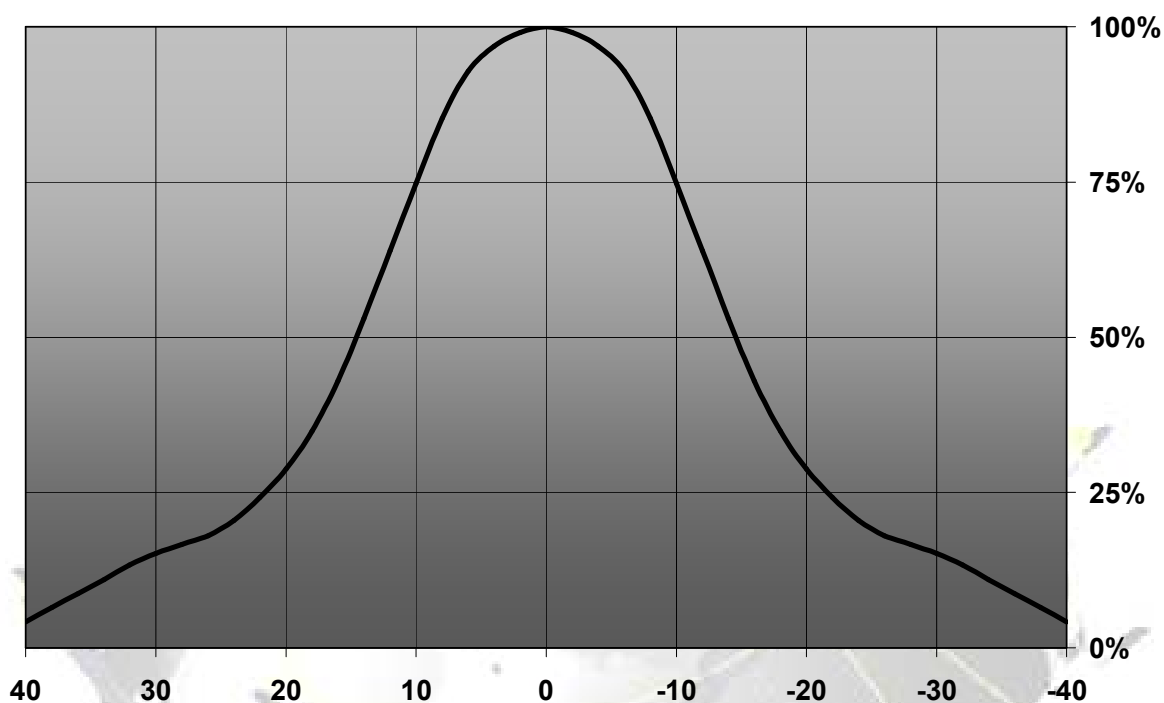
© Ledil Oy – PRELIMINARY - Subject to change without prior notice

Ledil Oy  
Tehdaskatu 13  
FIN-24100 SALO, Finland

[www.ledil.com](http://www.ledil.com)  
email: [ledil@ledil.com](mailto:ledil@ledil.com)  
FAX: +358-2-733 8001

2009-10-07

Relative Intensity of C10978\_Lily-SST50-M



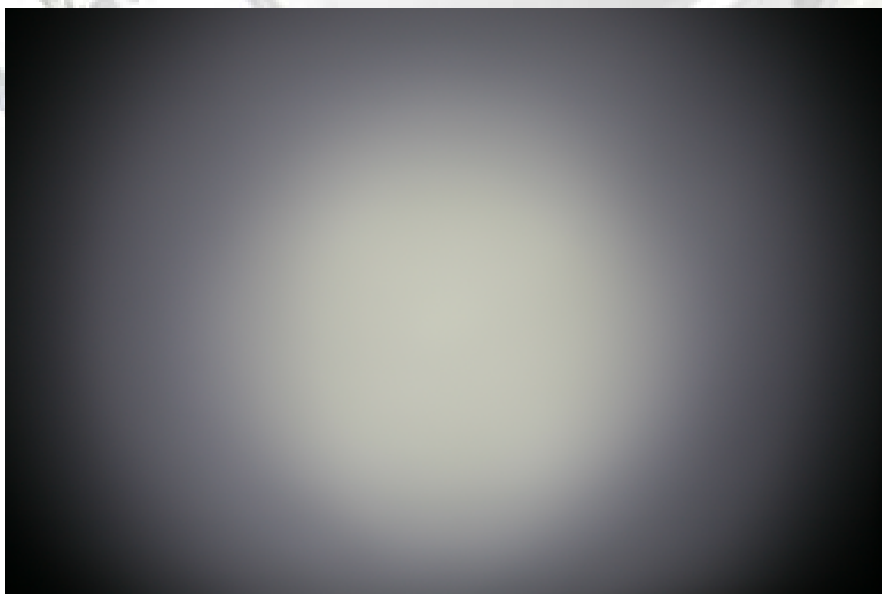
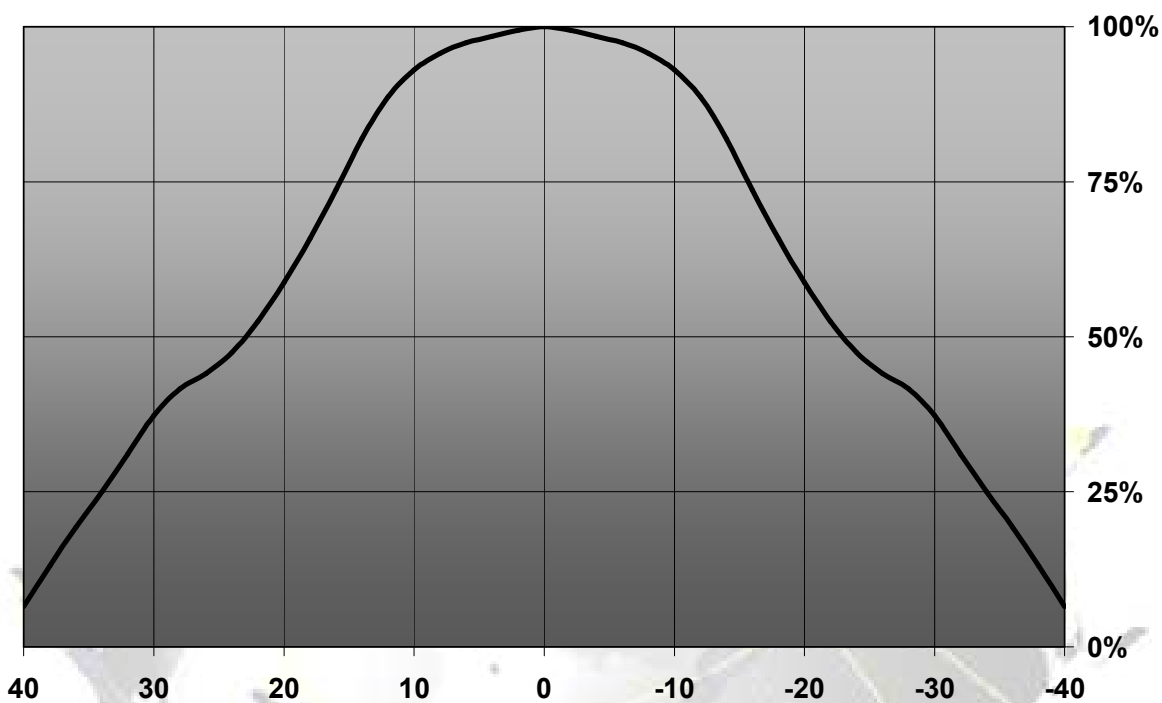
© Ledil Oy – PRELIMINARY - Subject to change without prior notice

Ledil Oy  
 Tehdaskatu 13  
 FIN-24100 SALO, Finland

[www.ledil.com](http://www.ledil.com)  
 email: [ledil@ledil.com](mailto:ledil@ledil.com)  
 FAX: +358-2-733 8001

2009-10-07

Relative Intensity of C10979\_Lily-SST50-W



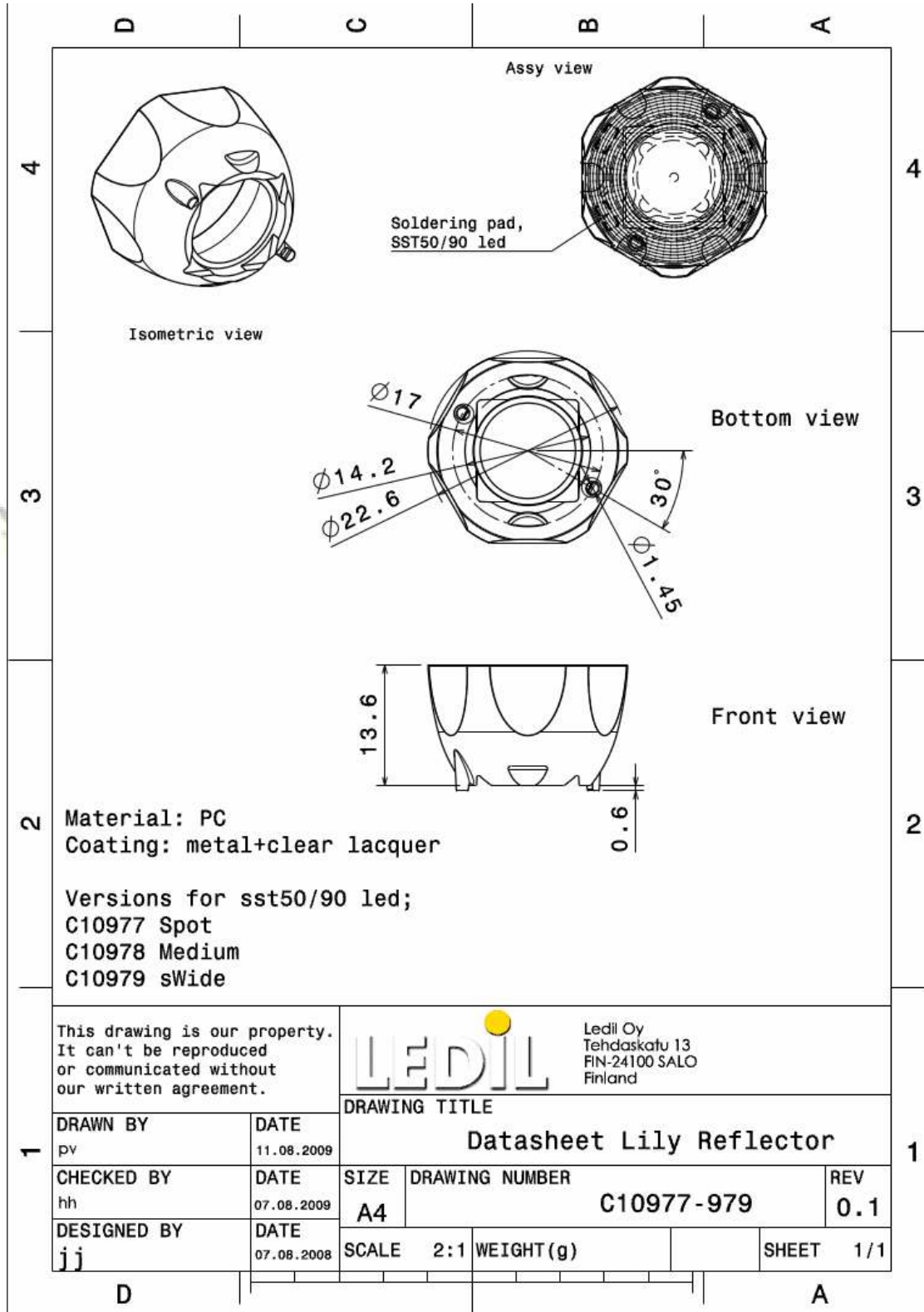
© Ledil Oy – PRELIMINARY - Subject to change without prior notice

Ledil Oy  
 Tehdaskatu 13  
 FIN-24100 SALO, Finland

[www.ledil.com](http://www.ledil.com)  
 email: [ledil@ledil.com](mailto:ledil@ledil.com)  
 FAX: +358-2-733 8001

2009-10-07

## DRAWINGS



© Ledil Oy – PRELIMINARY - Subject to change without prior notice

Ledil Oy  
 Tehdaskatu 13  
 FIN-24100 SALO, Finland

[www.ledil.com](http://www.ledil.com)  
 email: [ledil@ledil.com](mailto:ledil@ledil.com)  
 FAX: +358-2-733 8001

2009-10-07