



LB1740

8-Channel, Current-Source Output, Darlington Transistor Array

Overview

The LB1740 is an 8-channel current source output Darlington transistor array made up of PNP transistors and NPN transistors. High output drive capability for very low input current is achieved.

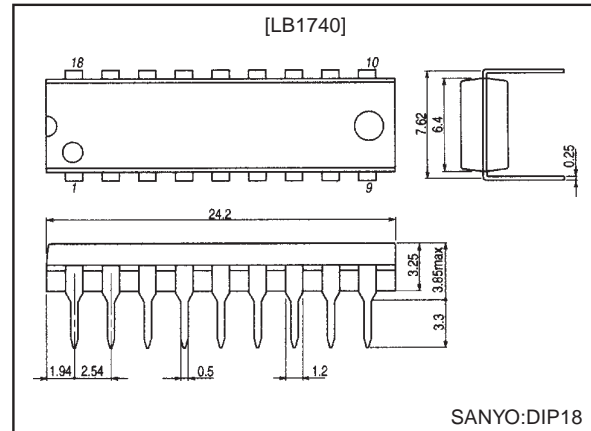
Features

- Eight independent Darlington driver circuits.
- High breakdown voltage (50V), high current source output (500mA).
- With output clamp diodes.

Package Dimensions

unit:mm

3007A-DIP18



Specifications

Maximum Ratings at Ta = 25°C

Parameter	Symbol	Conditions	Ratings	Unit
Maximum supply voltage	V_{CCmax}		-0.3 to +50	V
Output supply voltage	V_{OUT}		-0.3 to V_{CC}	V
Input supply voltage	V_{IN}		-0.3 to +30	V
Muximum output current	I_{OUT}	Per channel	-500	mA
Clamp diode forward current	I_F		-500	mA
Clamp diode reverse voltage	V_R		-0.3 to +50	V
Allowable power dissipation	$P_d max$		1.13	W
Operating temperature	T_{opr}		-20 to +75	°C
Storage temperature	T_{stg}		-40 to +150	°C

Allowable Operating Conditions at Ta = 25°C

Parameter	Symbol	Conditions	Ratings	Unit
Supply voltage	V_{CC}		4 to 50	V
Inout ON-level voltage	V_{ION}	$I_{OUT} = -350mA$	1.8 to 30	V
Inout OFF-level voltage	V_{IOFF}	$I_{OUT} \geq -50\mu A$	-0.3 to +0.3	V

Electrical Characteristics at Ta = 25°C, $V_{CC} = 50V$

Parameter	Symbol	Conditions	Ratings			Unit
			min	typ	max	
Supply current	I_{CCH}	All inputs: $V_{IN} = 5V$		5.6	10	mA
	I_{CCL}	All inputs: Open			100	μA
Output voltage	V_{OH1}	$V_{IN} = 1.8V, I_{OUT} = -100mA$	$V_{CC} - 2.0$	$V_{CC} - 1.45$		V
	V_{OH2}	$V_{IN} = 1.8V, I_{OUT} = -350mA$	$V_{CC} - 2.4$	$V_{CC} - 1.6$		V
Input current	V_{IN1}	$V_{IN} = 5V$		0.4	0.75	mA
	V_{IN2}	$V_{IN} = 25V$		2.6	4.7	mA
Clamp diode forward voltage	V_F	$I_F = -350mA$	-2.4	-1.2		V
Clamp diode reverse voltage	V_R	$I_R = 100\mu A$	50			V
Reted propagation delay time	t_{ph1}		20			ns

SANYO Electric Co.,Ltd. Semiconductor Bussiness Headquarters

TOKYO OFFICE Tokyo Bldg., 1-10, 1 Chome, Ueno, Taito-ku, TOKYO, 110-8534 JAPAN

43098HA (KT)/N2195YK/N149TA, TS No.3173-1/2

LB1740

Ta=25°C, VCC=12V

Parameter	Symbol	Conditions	Ratings			Unit
			min	typ	max	
Switching delay time	t_d	Reference circuit, See Figure1		7.3		μA

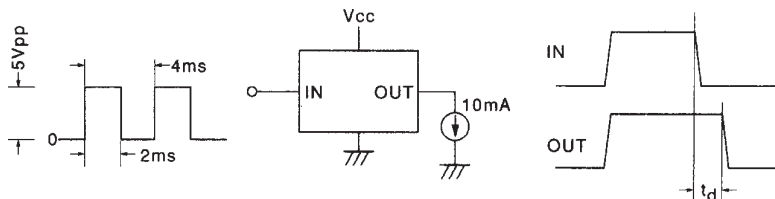
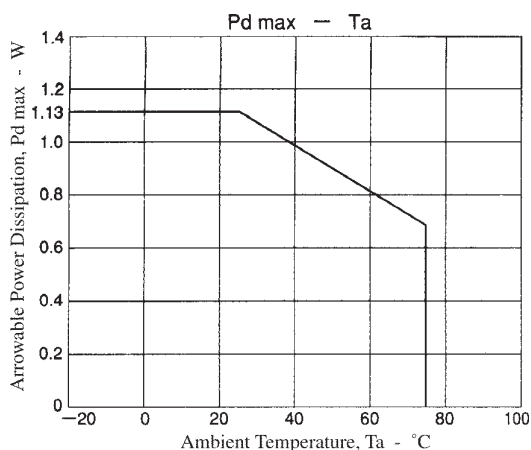
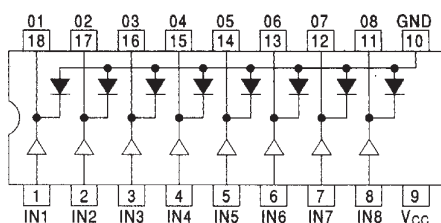
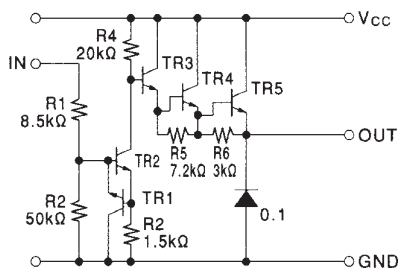


Figure 1

Pin Assignment



Equivalent Circuit (1 channel)



- No products described or contained herein are intended for use in surgical implants, life-support systems, aerospace equipment, nuclear power control systems, vehicles, disaster/crime-prevention equipment and the like, the failure of which may directly or indirectly cause injury, death or property loss.
- Anyone purchasing any products described or contained herein for an above-mentioned use shall:
 - ① Accept full responsibility and indemnify and defend SANYO ELECTRIC CO., LTD., its affiliates, subsidiaries and distributors and all their officers and employees, jointly and severally, against any and all claims and litigation and all damages, cost and expenses associated with such use:
 - ② Not impose any responsibility for any fault or negligence which may be cited in any such claim or litigation on SANYO ELECTRIC CO., LTD., its affiliates, subsidiaries and distributors or any of their officers and employees jointly or severally.
- Information (including circuit diagrams and circuit parameters) herein is for example only; it is not guaranteed for volume production. SANYO believes information herein is accurate and reliable, but no guarantees are made or implied regarding its use or any infringements of intellectual property rights or other rights of third parties.

This catalog provides information as of April, 1998. Specifications and information herein are subject to change without notice.