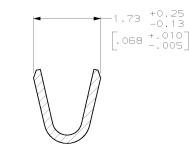
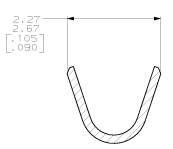
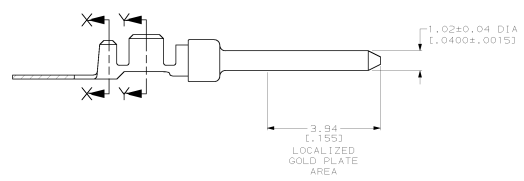
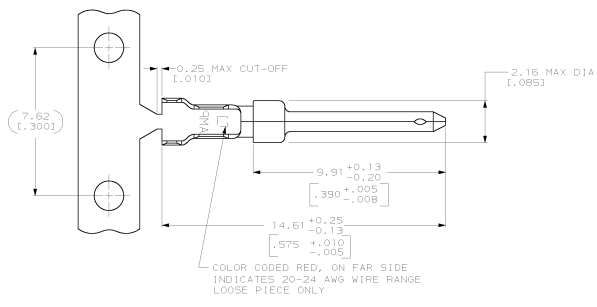


REV	DATE	BY	CHK	APP
00		TW		
0	RELEASED PER EC 0513-0168-03			



- △ FOR MINI-APPLICATOR AND STRIPPER CRIMPER.
- △ FOR HAND TOOL USE ONLY.
- 3. WIRE RANGE OF 20-24 AWG. INSULATION RANGE OF 1.27/1.52 (.050-.060).
- 4. GOLD PLATING MAY NOT APPEAR ON CARRIER STRIP.
- △ GOLD PLATED IN LOCALIZED GOLD PLATED AREA, 0.75µm (.000030) MIN GOLD IN MATING AREA, 2.54µm (.000100) MIN TIN PLATED ON BARRELS, ALL OVER 1.27µm (.000050) MIN NICKEL UNDERPLATE.
- △ GOLD FLASH IN LOCALIZED GOLD PLATE AREA, 2.54µm (.000100) MIN TIN PLATED ON BARRELS, ALL OVER 0.75µm (.000030) MIN NICKEL UNDERPLATE.
- △ GOLD FLASH IN LOCALIZED GOLD PLATE AREA, 0.75µm (.000030) MIN TIN PLATED WIRE BARRELS, ALL OVER 0.75µm (.000030) MIN NICKEL UNDERPLATE.

FINISH	USE	TYPE	PART NUMBER
△	△	STRIP	1658539-5
△	△	LOOSE PIECE	1658539-4
△	△	LOOSE PIECE	1658539-3
△	△	STRIP	1658539-2
△	△	STRIP	1658539-1

THIS DRAWING IS A CONTROLLED DOCUMENT. (S) SKETCH (T) TOLERANCE (B) BOLTS (T) TAP (A) AMP Incorporated Harrisburg, PA 17105-3600

DESCRIPTION: PIN CONTACT, 20 DF, 20-24 AWG, AMPLIMITE™	REV: 108-40005	DATE: 11-4-10000	REVISED TO: 1658539
MATERIAL: BRASS	PROCESS: SEE TABLE	QUANTITY: 114-10000	REVISION: A1 00778

CUSTOMER DRAWING