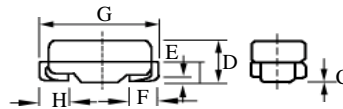
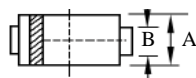


FM401 – FM407

1A 片式二极管

1A GLASS PASSIVATED SMA DIODES

型号 TYPE	印字 Marking	反向重复 峰值电压 $V_{RRM}(V)$	正向 平均电流 $I_F(A)$	正向 峰值电压 $V_F(V)$	反向 峰值电流 $I_{RM}(\mu A)$	正向 浪涌电流 $I_{FSM}(A)$	反向 恢复时间 $T_{rr}(ns)$	外形尺寸 Package Dimensions
FM401	M01	50	1.0	1.10	5.0	30	—	DO – 214AC
FM402	M02	100						
FM403	M03	200						
FM404	M04	400						
FM405	M05	600						
FM406	M06	800						
FM407	M07	1000						



A	B	C	D	E	F	G	H
$\frac{.110(2.8)}{.086(2.2)}$	$\frac{.067(1.7)}{.051(1.3)}$	$\frac{.008}{(.2)}$ MAX	$\frac{.091(2.3)}{.067(1.7)}$	$\frac{.051(1.3)}{.008(0.2)}$	$\frac{.059(1.5)}{.035(0.9)}$	$\frac{.209(5.3)}{.185(4.7)}$	$\frac{.059(1.5)}{.035(0.9)}$

DO – 214AC

FM401 – FM407

1A 片式二极管额定值与特性曲线

RATING & CHARACTERISTIC CURVES OF 1A SMA DIODES

FIG. 1 - TYPICAL FORWARD CURRENT DERATING CURVE

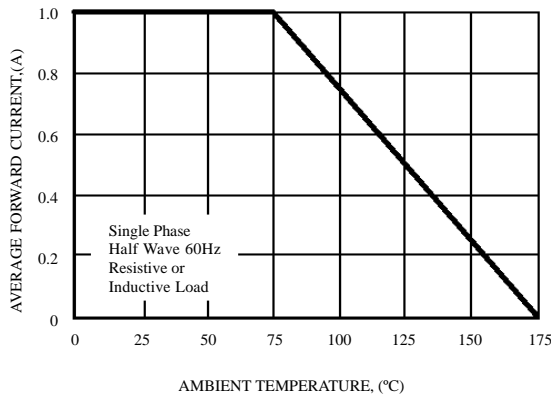


FIG. 3 - MAXIMUM NON-REPETITIVE FORWARD SURGE CURRENT

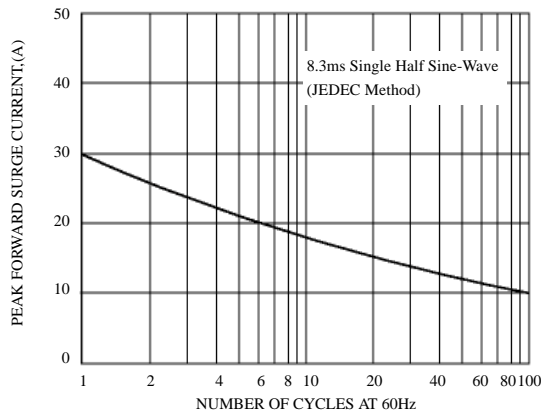


FIG. 5 - TYPICAL JUNCTION CAPACITANCE

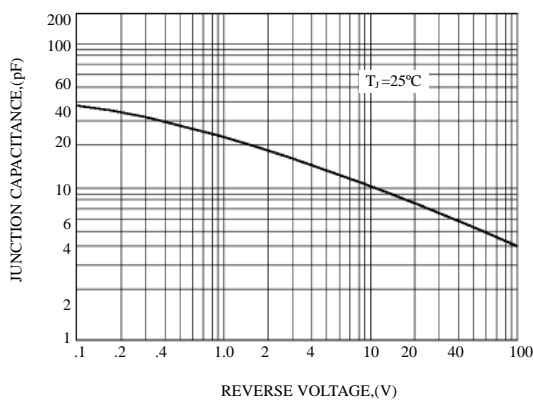


FIG. 2 - TYPICAL INSTANTANEOUS FORWARD CHARACTERISTICS

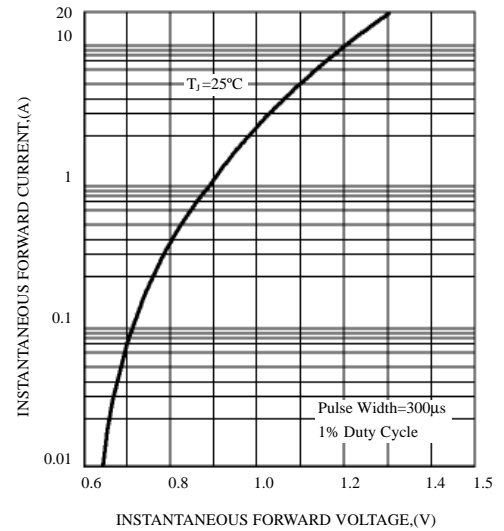


FIG. 4 - TYPICAL REVERSE CHARACTERISTICS

