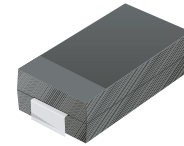


# SMD Efficient Fast Recovery Rectifier

## CEFB101-G Thru CEFB105-G (RoHS Device)

**Reverse Voltage: 50 ~ 600 Volts**

**Forward Current: 1.0 Amp**

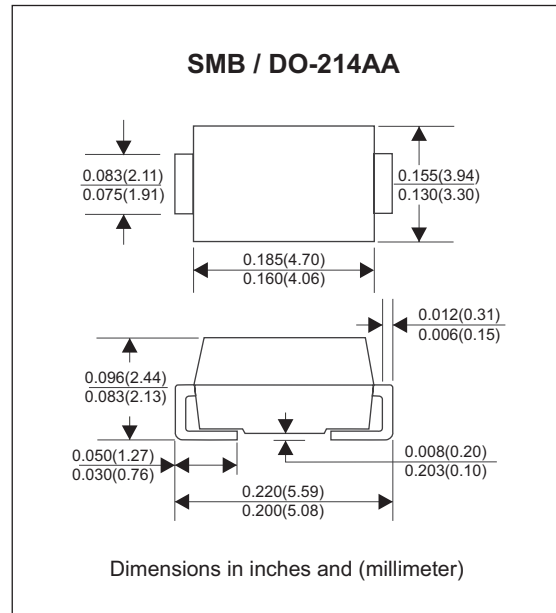


### Features:

- Ideal for surface mount applications
- Easy pick and place
- Plastic package has Underwriters Lab. flammability classification 94V-0.
- Super fast recovery time for high efficient
- Built-in strain relief
- Low forward voltage drop

### Mechanical Data:

- Case: JEDEC DO-214AA molded plastic
- Terminals: solderable per MIL-STD-750, method 2026
- Polarity: Color band denotes cathode end
- Approx. Weight: 0.063 gram



### Maximum Ratings and Electrical Characteristics:

Parameter	Symbol	CEFB101-G	CEFB102-G	CEFB103-G	CEFB104-G	CEFB105-G	Unit	
Max. Repetitive Peak Reverse Voltage	$V_{RRM}$	50	100	200	400	600	V	
Max. DC Blocking Voltage	$V_{DC}$	50	100	200	400	600	V	
Max. RMS Voltage	$V_{RMS}$	35	70	140	280	420	V	
Peak Surge Forward Current 8.3ms single half sine-wave superimposed on rate load (JEDEC method)	$I_{FSM}$	30						A
Max. Average Forward Current	$I_o$	1.0						A
Max. Instantaneous Forward Voltage at 1.0A	$V_F$	0.875			1.1	1.25		V
Reverse recovery time	$T_{rr}$	25			35	50		nS
Max. DC Reverse Current at Rated DC Blocking Voltage $T_a=25^{\circ}C$ $T_a=100^{\circ}C$	$I_R$	5.0			200			$\mu A$
Max. Thermal Resistance (Note1)	$R_{\theta JL}$	13						$^{\circ}C/W$
Max. Operating Junction Temperature	$T_j$	150						$^{\circ}C$
Storage Temperature	$T_{STG}$	-55 to +150						$^{\circ}C$

Note1: Thermal resistance from junction to lead mounted on PCB with 8.0mmx8.0mm<sup>2</sup> copper pad areas.

## Rating and Characteristic Curves (CEFB101-G Thru CEFB105-G)

Fig.1- Reverse Characteristics

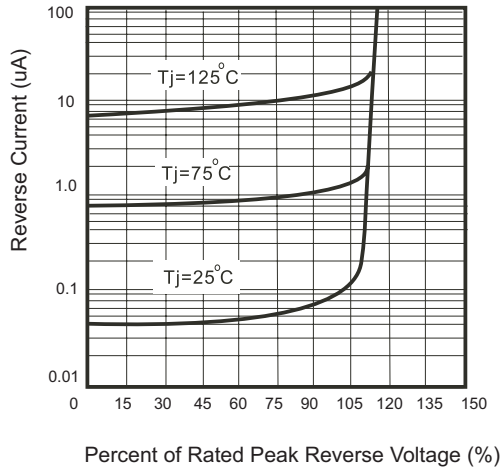


Fig.2 - Forward Characteristics

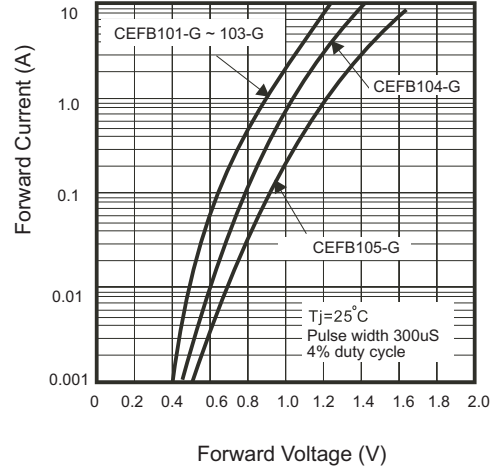


Fig. 3 - Junction Capacitance

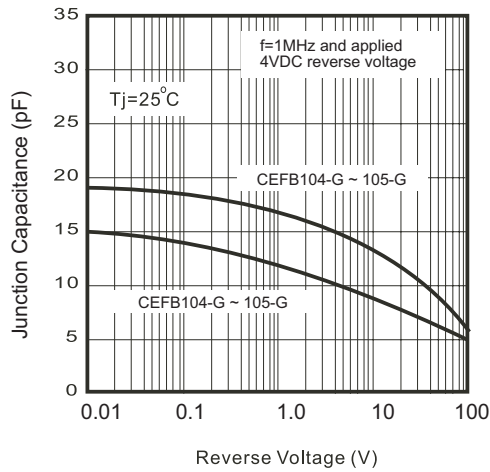


Fig.4 - Non Repetitive Forward Surge Current

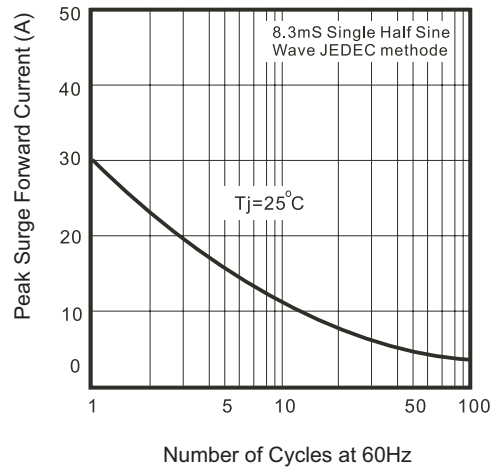
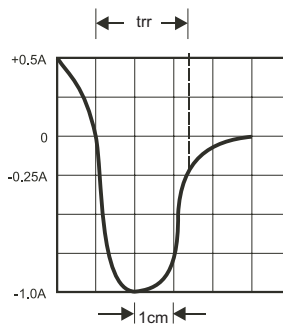
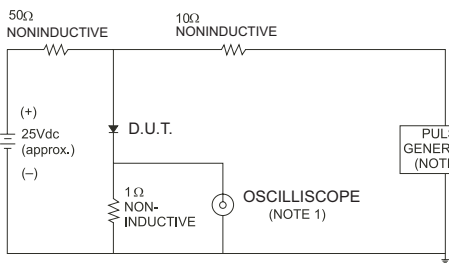


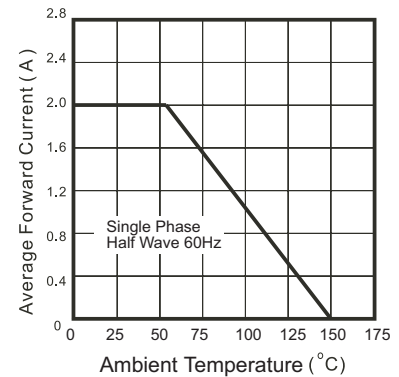
Fig.5 - Test Circuit Diagram and Reverse Recovery Time Characteristics



NOTES: 1. Rise Times = 7ns max., Input Impedance = 1 megohm.22pF.  
2. Rise Time = 10ns max., Source Impedance = 50 ohms.

SET TIME BASE FOR  
50 / 10ns / cm

Fig. 6 - Current Derating Curve



“-G” suffix designates RoHS compliant Version