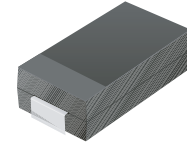


# SMD Efficient Fast Recovery Rectifier

## CEFA201-G Thru CEFA203-G (RoHS Device)

**Reverse Voltage: 50 ~ 200 Volts**

**Forward Current: 2.0 Amp**

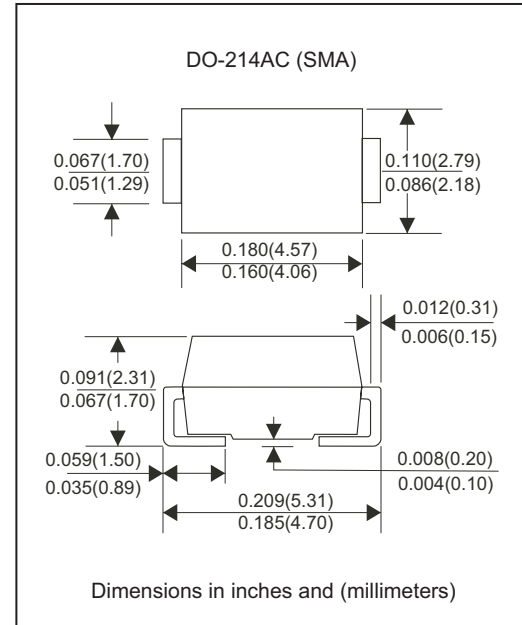


### Features:

- Ideal for surface mount applications
- Easy pick and place
- Plastic package has Underwriters Lab. flammability classification 94V-0.
- Super fast recovery time for high efficient
- Built-in strain relief
- Low forward voltage drop

### Mechanical Data:

- Case: JEDEC DO-214AC molded plastic
- Terminals: solderable per MIL-STD-750, method 2026
- Polarity: Color band denotes cathode end
- Approx. Weight: 0.063 gram



### Maximum Ratings and Electrical Characteristics:

Parameter	Symbol	CEFA201-G	CEFA202-G	CEFA203-G	Unit
Max. Repetitive Peak Reverse Voltage	$V_{RRM}$	50	100	200	V
Max. DC Blocking Voltage	$V_{DC}$	50	100	200	V
Max. RMS Voltage	$V_{RMS}$	35	75	140	V
Peak Surge Forward Current 8.3ms single half sine-wave superimposed on rate load (JEDEC method)	$I_{FSM}$		50		A
Max. Average Forward Current	$I_o$		2.0		A
Max. Instantaneous Forward Voltage at 2.0A	$V_F$		0.92		V
Reverse recovery time	$T_{rr}$		25		nS
Max. DC Reverse Current at Rated DC Blocking Voltage $T_a=25^{\circ}C$ $T_a=100^{\circ}C$	$I_R$		5.0 100		$\mu A$
Max. Thermal Resistance (Note1)	$R_{\theta JL}$		25		$^{\circ}C/W$
Max. Operating Junction Temperature	$T_j$		150		$^{\circ}C$
Storage Temperature	$T_{STG}$		-55 to +150		$^{\circ}C$

Note1: Thermal resistance from junction to lead mounted on PCB with 8.0mmx8.0mm<sup>2</sup> copper pad areas.

## Rating and Characteristic Curves (CEFA201-G Thru CEFA203-G)

Fig.1 - Reverse Characteristics

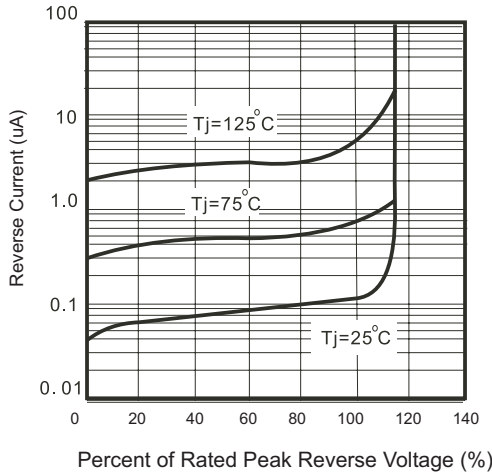


Fig.2 - Forward Characteristics

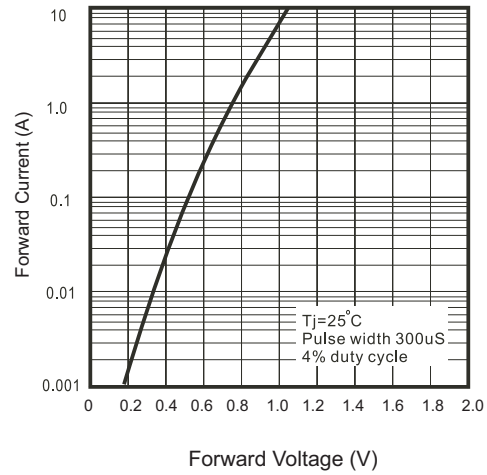


Fig. 3 - Current Derating Curve

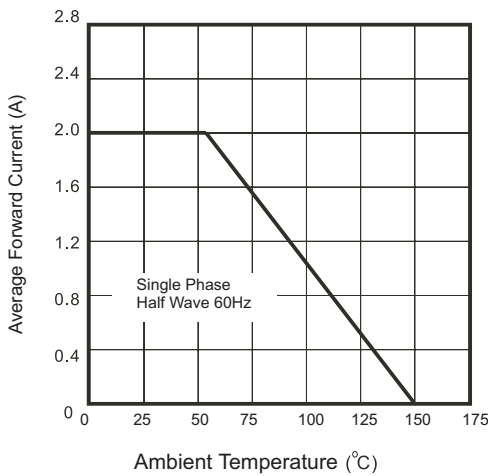


Fig. 4 - Non Repetitive Forward Surge Current

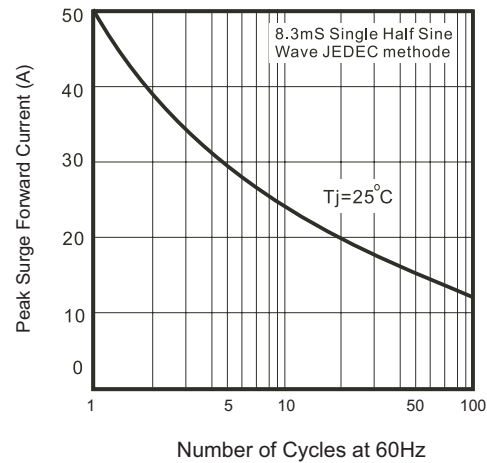
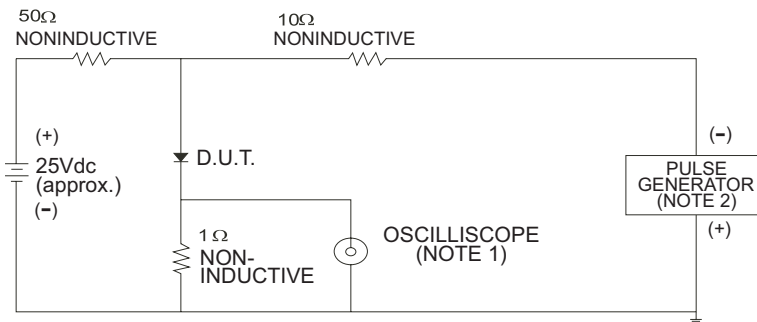
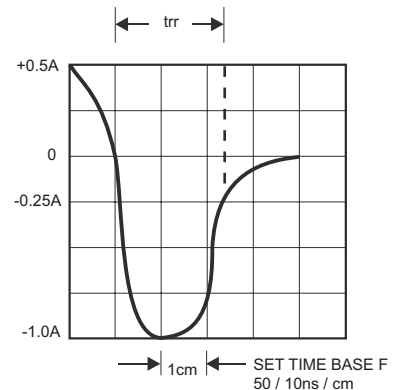


Fig. 5 - Test Circuit Diagram and Reverse Recovery Time Characteristics



- Notes: 1. Rise Time = 7ns max., Input Impedance = 1 megohm .22pF.  
2. Rise Time = 10ns max., Source Impedance = 50 ohms.



“-G” suffix designates RoHS compliant Version