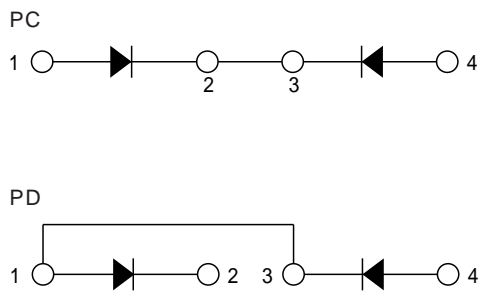
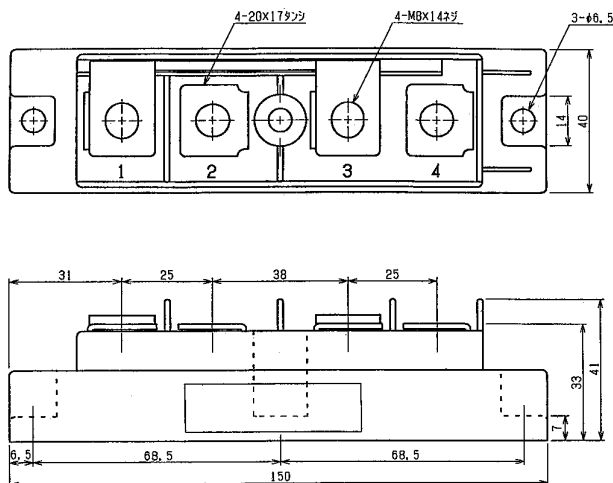


|       |                            |                                    |
|-------|----------------------------|------------------------------------|
| DIODE | 200A Avg 1200 ~ 1600 Volts | PC20012 PC20016<br>PD20012 PD20016 |
|-------|----------------------------|------------------------------------|

回路図 CIRCUIT



外形寸法図 OUTLINE DRAWING (単位 Dimension : mm)



最大定格 Maximum Ratings

| 項目<br>Parameter                                       | 記号<br>Symbol     | 耐圧クラス Grade     |                 | 単位<br>Unit |
|---|------------------|-----------------|-----------------|------------|
|   |                  | PC20012/PD20012 | PC20016/PD20016 |            |
| くり返しピーク逆電圧 *1<br>Repetitive Peak Reverse Voltage      | V <sub>RRM</sub> | 1200            | 1600            | V          |
| 非くり返しピーク逆電圧 *1<br>Non Repetitive Peak Reverse Voltage | V <sub>RSM</sub> | 1300            | 1700            | V          |

| 項目<br>Parameter                                  | 記号<br>Symbol        | 条件<br>Conditions   | 定格値<br>Max. Rated Value | 単位<br>Unit       |           |     |
|--|---------------------|--|-------------------------|------------------|-----------|-----|
| 平均整流電流 *1<br>Average Rectified Output Current    | I <sub>o(AV)</sub>  | 商用周波数 180° 通電 T <sub>c</sub> = 77<br>Half Sine Wave              | 200                     | A                |           |     |
| 実効順電流 *1<br>RMS Forward Current                  | I <sub>r(RMS)</sub> |  | 314                     | A                |           |     |
| サージ順電流 *1<br>Surge Forward Current               | I <sub>FSM</sub>    | 50Hz正弦半波, 1サイクル, 非くり返し<br>Half Sine Wave, 1Pulse, Non-Repetitive | 4000                    | A                |           |     |
| 電流二乗時間積 *1<br>I Squared t                        | I <sup>2</sup> t    | 2 ~ 10ms   | 80000                   | A <sup>2</sup> s |           |     |
| 動作接合温度範囲<br>Operating Junction Temperature Range | T <sub>jw</sub>     |  | - 40 ~ + 125            |                  |           |     |
| 保存温度範囲<br>Storage Temperature Range              | T <sub>stg</sub>    |  | - 40 ~ + 125            |                  |           |     |
| 絶縁耐圧<br>Isolation Voltage                        | V <sub>iso</sub>    | 端子 - ベース間, AC 1分間<br>Terminal to Base, AC 1 min.                 | 2500                    | V                |           |     |
| 締付トルク<br>Mounting Torque                         | ベース部<br>Mounting    | F  | サーマルコンパウンド塗布<br>Greased | M6               | 2.5 ~ 3.5 | N·m |
|  | 主端子部<br>Terminal    |  | M8                      | 9.0 ~ 10.0       | N·m       |     |

電気的特性 Electrical Characteristics

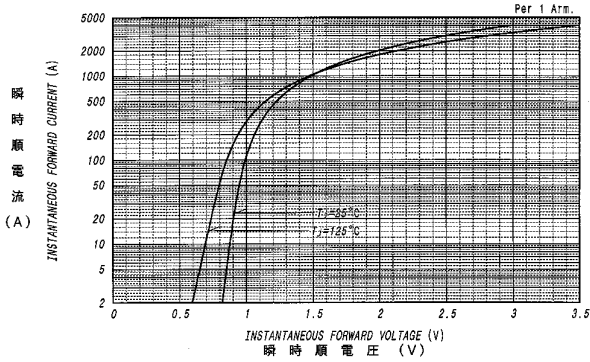
| 項目<br>Parameter                   | 記号<br>Symbol         | 条件<br>Conditions   | 特性値 (最大)<br>Maximum Value | 単位<br>Unit |
|-----------------------------------|----------------------|--|---------------------------|------------|
| ピーク逆電流 *1<br>Peak Reverse Current | I <sub>RM</sub>      | T <sub>j</sub> = 125, V <sub>RM</sub> = V <sub>RRM</sub> | 30                        | mA         |
| ピーク順電圧 *1<br>Peak Forward Voltage | V <sub>FM</sub>      | T <sub>j</sub> = 25, I <sub>FM</sub> = 600A              | 1.28                      | V          |
| 熱抵抗<br>Thermal Resistance         | R <sub>th(j-c)</sub> | 接合部 - ケース間<br>Junction to Case                           | 0.2                       | /W         |
| 接触熱抵抗<br>Thermal Resistance       | R <sub>th(c-f)</sub> | ケース - フィン間, サーマルコンパウンド塗布<br>Case to Fin, Greased         | 0.1                       | /W         |

質量...約480g  
Approximate Weight

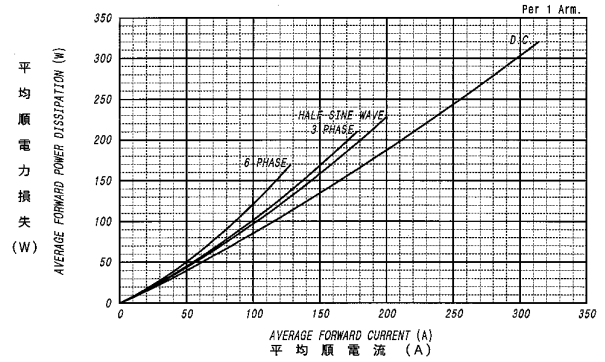
\*1: 1アーム当りの値 Value Per 1 Arm.

定格・特性曲線

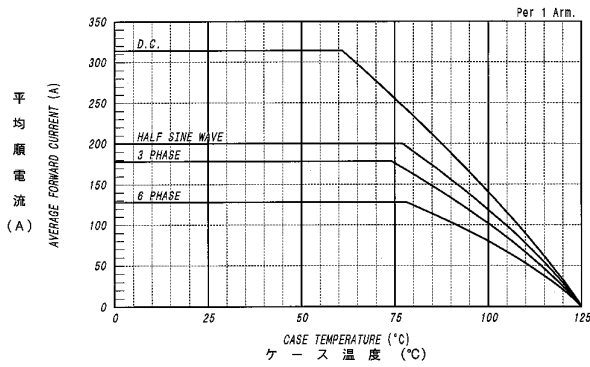
順電圧特性  
FORWARD CURRENT VS. VOLTAGE



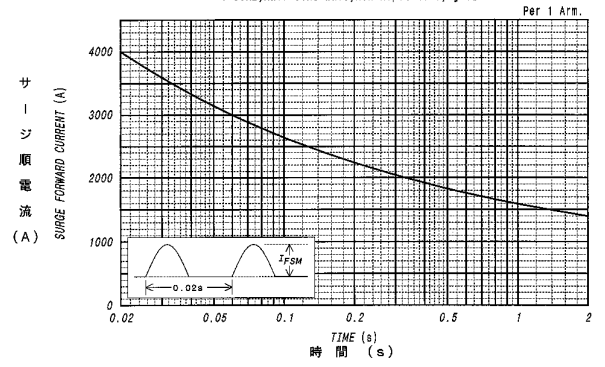
平均順電力損失特性  
AVERAGE FORWARD POWER DISSIPATION



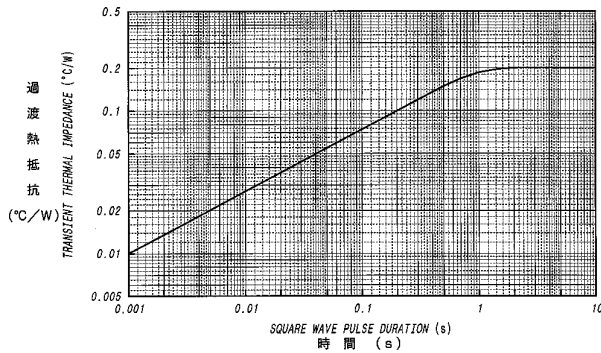
平均順電流 - ケース温度定格  
AVERAGE FORWARD CURRENT VS. CASE TEMPERATURE



サージ順電流定格  
SURGE CURRENT RATINGS



過渡熱抵抗特性  
MAXIMUM TRANSIENT THERMAL IMPEDANCE  
Junction to Case



ダイオードモジュール