

# PM30CTJ060

FLAT-BASE TYPE  
INSULATED PACKAGE

## PM30CTJ060



- 600V, 30A Current-sense 6kHz IGBT type inverter
- Built in IGBT gate drive circuit
- Built in Fault OC, SC, OT & UV protection Fault output
- 2.2kW class inverter application

## APPLICATION

Air conditioner, motor control

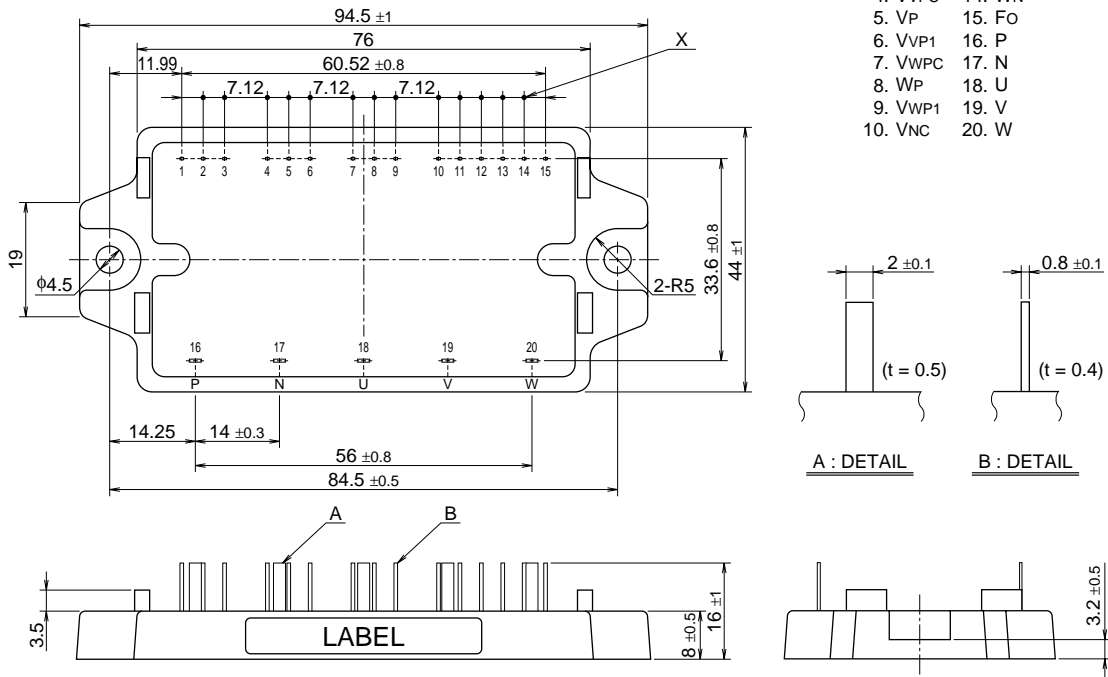
## OUTLINE DRAWING

Dimensions in mm

NOTE : X IS  $3.56 \pm 0.3 \times 11$

A · B : TERMINAL NAME

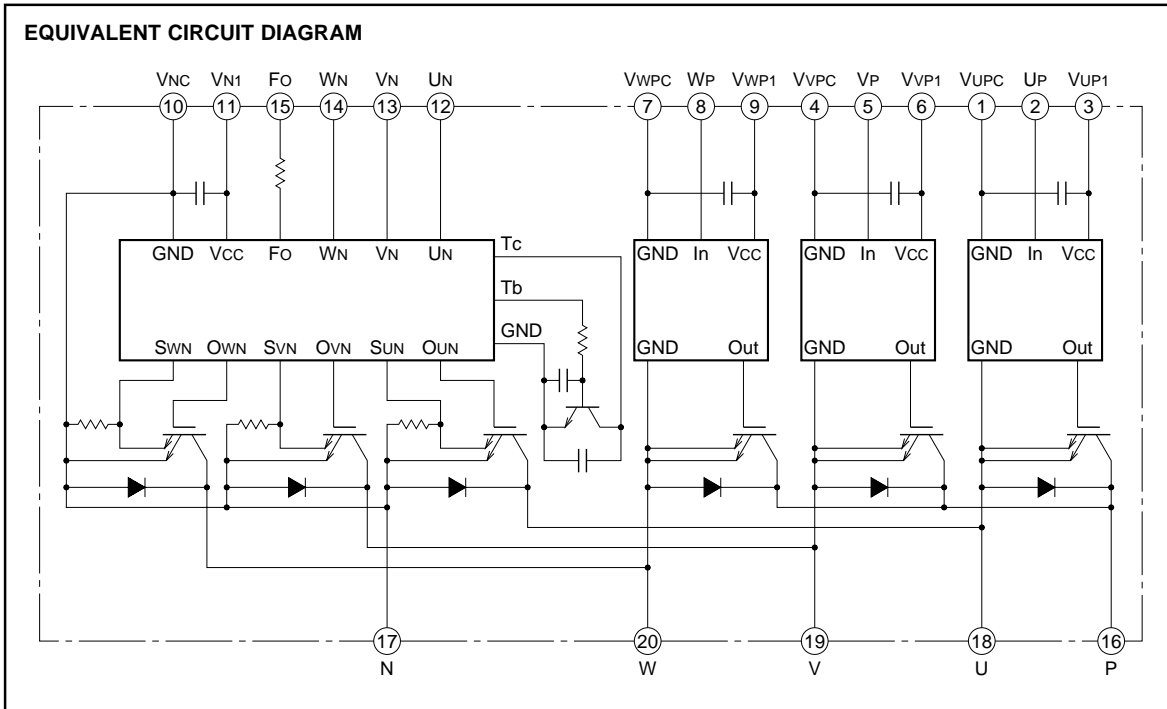
- |         |         |
|---------|---------|
| 1. VUPC | 11. VN1 |
| 2. UP   | 12. UN  |
| 3. VUP1 | 13. VN  |
| 4. VVPC | 14. WN  |
| 5. VP   | 15. FO  |
| 6. VVP1 | 16. P   |
| 7. VWPC | 17. N   |
| 8. WP   | 18. U   |
| 9. VWP1 | 19. V   |
| 10. VNC | 20. W   |



Aug.1999

# PM30CTJ060

FLAT-BASE TYPE  
INSULATED PACKAGE



**MAXIMUM RATINGS** ( $T_j = 25^\circ\text{C}$ , unless otherwise noted)

**INVERTER PART**

Symbol	Parameter	Conditions	Ratings	Unit
$V_{CES}$	Collector-emitter voltage	$V_D = 15\text{V}$ , $I_{CIN} = 10\text{mA}$	600	V
$\pm I_C$	Collector current	$T_C = 25^\circ\text{C}$	30	A
$\pm I_{CP}$	Collector current (peak)	$T_C = 25^\circ\text{C}$	60	A
$P_C$	Collector dissipation	$T_C = 25^\circ\text{C}$	83	W
$T_j$	Junction temperature		$-20 \sim +125^*$	$^\circ\text{C}$

\* maximum instantaneous  $T_j \leq 150^\circ\text{C}$

**CONTROL PART**

Symbol	Parameter	Conditions	Ratings	Unit
$V_D$	Supply voltage	Applied between : $V_{UP1}-V_{UPC}$ , $V_{VP1}-V_{VPC}$ $V_{WP1}-V_{WPC}$ , $V_{N1}-V_{NC}$	20	V
$I_{CIN}$	Input current	Applied between : $U_P-V_{UPC}$ , $V_P-V_{VPC}$ , $U_N \cdot V_N \cdot W_N-V_{NC}$	20	mA
$V_{FO}$	Fault output supply voltage	Applied between : $FO-V_{NC}$	20	V
$I_{FO}$	Fault output current	Sink current of $FO$ terminal	20	mA

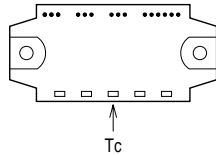
**PM30CTJ060**

**FLAT-BASE TYPE  
INSULATED PACKAGE**

**TOTAL SYSTEM**

Symbol	Parameter	Conditions	Ratings	Unit
VCC(PROT)	Supply voltage protected by OC & SC	V <sub>D</sub> = 13.5 ~ 16.5V, Inverter part, T <sub>j</sub> = 125°C start	400	V
VCC	Supply voltage	Applied between : P-N, operating time	450	V
VCC(surge)	Supply voltage (surge)	Applied between : P-N, surge and non-operating time	500	V
T <sub>C</sub>	Module case operating temperature	(Note 1)	-20 ~ +100	°C
T <sub>stg</sub>	Storage temperature		-40 ~ +125	°C
V <sub>iso</sub>	Isolation voltage	60Hz, sinusoidal, AC · 1 min	2500	V <sub>rms</sub>

Note 1 : T<sub>C</sub> measuring point is as shown below.



**ELECTRICAL CHARACTERISTICS** (T<sub>j</sub> = 25°C, unless otherwise noted)

**INVERTER PART**

Symbol	Parameter	Test conditions	Limits			Unit
			Min.	Typ.	Max.	
VCE(sat)	Collector-emitter saturation voltage	V <sub>D</sub> = 15V, I <sub>CIN</sub> = 10mA I <sub>C</sub> = 30A, T <sub>j</sub> = 25°C I <sub>C</sub> = 30A, T <sub>j</sub> = 125°C	—	1.8 2.0	2.6 3.0	V
VEC	FWDI forward voltage	-I <sub>C</sub> = 30A, V <sub>D</sub> = 15V, I <sub>CIN</sub> = 0mA	—	2.5	3.5	V
t <sub>on</sub>	Switching time	V <sub>D</sub> = 15V, I <sub>CIN</sub> = 0mA ↔ 10mA V <sub>CC</sub> = 300V, I <sub>C</sub> = 30A T <sub>j</sub> = 125°C (Per 1 arm) Inductive Load	0.5	1.0	2.0	μs
t <sub>rr</sub>			—	0.1	—	μs
t <sub>c(on)</sub>			—	0.3	0.9	μs
t <sub>off</sub>			—	3.0	4.0	μs
t <sub>c(off)</sub>			—	1.0	2.0	μs
ICES	Collector-emitter cutoff current	V <sub>CE</sub> = V <sub>CEs</sub> , I <sub>CIN</sub> = 0mA T <sub>j</sub> = 25°C T <sub>j</sub> = 125°C	—	—	1 10	mA

**CONTROL PART**

Symbol	Parameter	Test conditions	Limits			Unit	
			Min.	Typ.	Max.		
I <sub>D</sub>	Circuit current	V <sub>D</sub> = 15V, I <sub>CIN</sub> = 0mA VN1-VNC VXP1-VXPC	—	25 5	35 10	mA	
I <sub>th(ON)</sub>	Input on threshold current	Applied between : UP-VUPC, VP-VVPC, WP-VWPC UN · VN · WN-VNC	1	3	5	mA	
I <sub>th(OFF)</sub>	Input off threshold current		1	3	5	mA	
OC	Over current trip level	-20°C ≤ T <sub>j</sub> ≤ 125°C, V <sub>D</sub> = 15V (only N side)	41	46	—	A	
SC	Short circuit trip level	-20°C ≤ T <sub>j</sub> ≤ 125°C, V <sub>D</sub> = 15V (only N side)	—	69	—	A	
t <sub>off(OC)</sub>	Over current delay time	V <sub>D</sub> = 15V	—	10	—	μs	
OT	Over temperature protection	Base-plate Temperature detection, V <sub>D</sub> = 15V	Trip level	100	110	120	°C
OT <sub>r</sub>			Reset level	—	90	—	°C
UV	Supply circuit under voltage protection	-20°C ≤ T <sub>j</sub> ≤ 125°C (only N side)	Trip level	11.5	12.0	12.5	V
UV <sub>r</sub>			Reset level	—	12.5	—	V
I <sub>FO(H)</sub>	Fault output current (Note 2)	V <sub>D</sub> = 15V, V <sub>FO</sub> = 15V	—	—	0.01	mA	
I <sub>FO(L)</sub>			—	10	15	mA	
t <sub>FO</sub>	Minimum fault output pulse width (Note 2)	V <sub>D</sub> = 15V	1.0	1.8	—	ms	

Note 2 : Fault output is given only when the internal OC, SC, OT & UV protection. (only N side)  
 Fault output of OC, SC protection given pulse.  
 Fault output of OT, UV protection given pulse while over level. (OT is only N side)

**PM30CTJ060**

**FLAT-BASE TYPE  
INSULATED PACKAGE**

**THERMAL RESISTANCES**

Symbol	Parameter	Test conditions	Limits			Unit
			Min.	Tye.	Max.	
Rth(j-c)Q	Junction to case	Inverter IGBT part, per 1/6 module	—	—	1.5	°C / W
Rth(j-c)F	thermal resistances	Inverter FWDi part, per 1/6 module	—	—	4.5	°C / W
Rth(c-f)	Contact thermal resistance	Case to fin, thermal grease applied, per 1/6 module	—	—	0.4	°C / W

**MECHANICAL RATINGS AND CHARACTERISTICS**

Symbol	Parameter	Test conditions	Limits			Unit
			Min.	Tye.	Max.	
—	Mounting torque	Mounting screw : M4	0.98	1.18	1.47	N·m
—	Weight		—	80	—	g

**RECOMMENDED CONDITIONS FOR USE**

Symbol	Parameter	Test conditions	Ratings	Unit
VCC	Supply voltage	Applied between : P-N	≤ 400	V
Vd		Applied between : VUP1-VUPC, VVP1-VVPC VWP1-VWPC, VN1-VNC (Note 3)	15 ± 1.5	V
ICIN(ON)	Input on current	Applied between : UP, VP, WP, UN, VN, WN	≥ 5	mA
ICIN(OFF)	Input off current		≤ 1	mA
fPWM	PWM input frequency	Using application circuit Opto-coupler's input signal	≤ 8	kHz
tdead	Arm shoot-through blocking time	Using application circuit Opto-coupler's input signal	≥ 3.5	μs

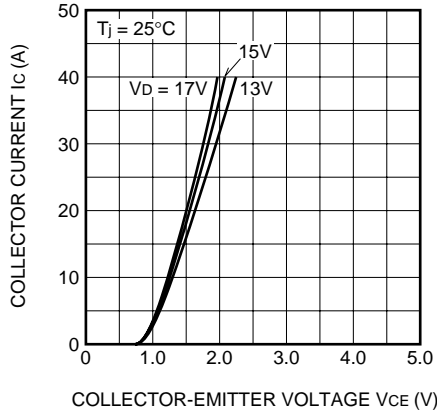
Note 3 : Permissible ripple value :  $dv/dt \leq \pm 5V/\mu s$ ,  $V_{ripple} \leq 2VP-P$

# PM30CTJ060

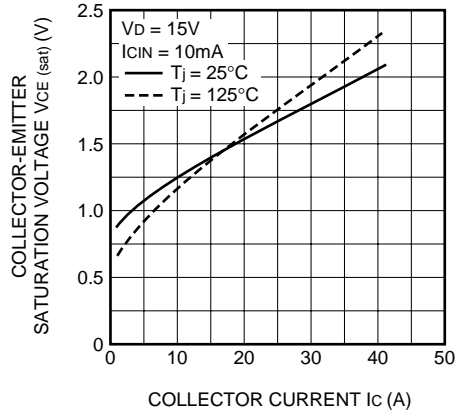
FLAT-BASE TYPE  
INSULATED PACKAGE

PERFORMANCE CURVES

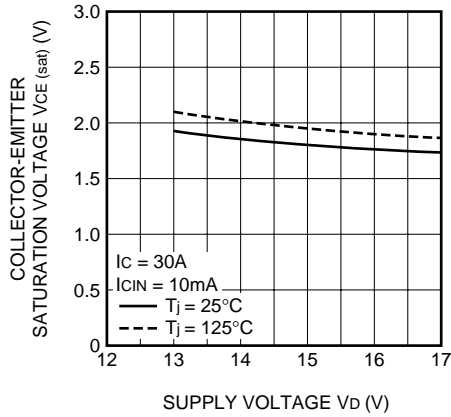
OUTPUT CHARACTERISTICS  
(TYPICAL)



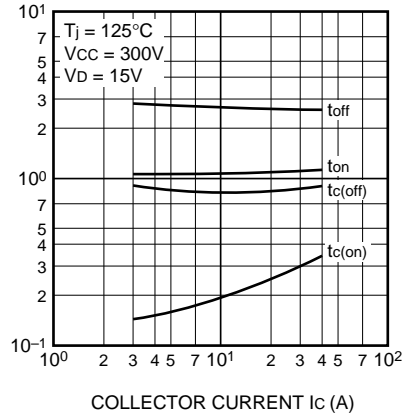
COLLECTOR-EMITTER SATURATION  
VOLTAGE CHARACTERISTICS  
(TYPICAL)



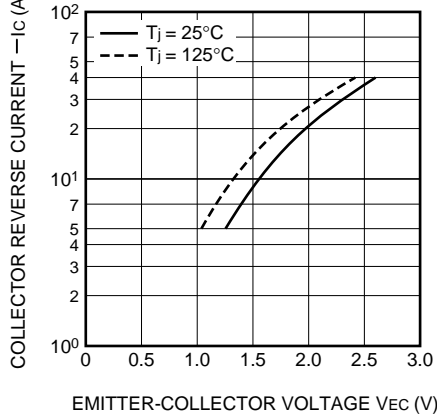
COLLECTOR-EMITTER SATURATION  
VOLTAGE VS. SUPPLY VOLTAGE  
(TYPICAL)



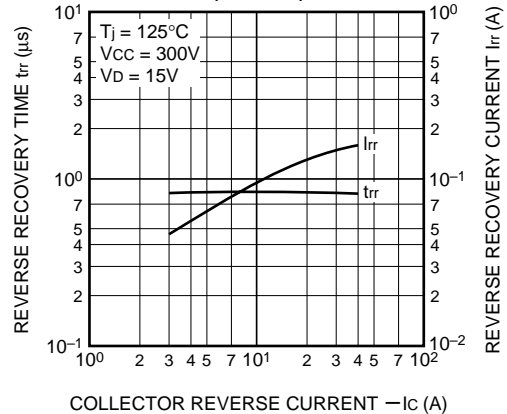
SWITCHING TIME VS.  
COLLECTOR CURRENT  
(TYPICAL)



FREE-WHEEL DIODE FORWARD  
CHARACTERISTICS  
(TYPICAL)



REVERSE RECOVERY CHARACTERISTICS  
OF FREE-WHEEL DIODE  
(TYPICAL)



**PM30CTJ060**

FLAT-BASE TYPE  
INSULATED PACKAGE

