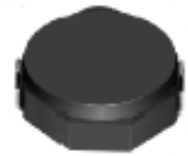
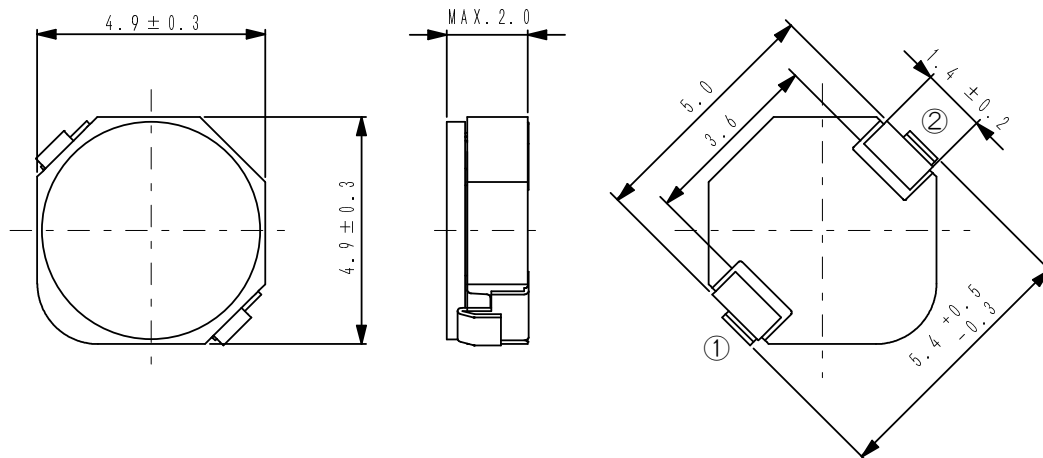
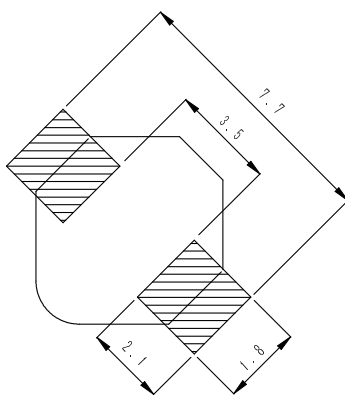


**Type: CDPH4D19F**
**◆ Product Description**

- 5.2×5.2mm Max. (L×W), 2.0mm Max. height
- Inductance Range : 3.3~47  $\mu$  H
- Rated Current Range : 0.36~1.5A
- In addition to the standard versions of inductors shown here, custom inductors are available to meet your exact requirement


**◆ Feature**

- Magnetically shielded construction.
- Ideally Used in Notebook PC, MP3, Mobile Phone, DSC/DVC, etc as DC-DC Converter inductors.
- RoHS Compliance and Halogen free.

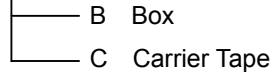
**◆ Dimensions (mm)**

**◆ Land Pattern (mm)**


**Type: CDPH4D19F**
**◆ Specification**

| Part Name<br>※    | Stamp | Inductance<br>( $\mu$ H)<br>100kHz/1V | D.C.R.(m $\Omega$ )<br>Max.(Typ.)<br>(at 20°C) | Saturation<br>Current<br>(A) ※ 1 | Temperature<br>Rise Current<br>(A)※ 2 |
|-------------------|-------|---------------------------------------|--|----------------------------------|---------------------------------------|
| CDPH4D19FNP-3R3MC | 3R3   | 3.3 $\pm$ 20%                         | 33(26)   | 1.50                             | 3.80                                  |
| CDPH4D19FNP-4R7MC | 4R7   | 4.7 $\pm$ 20%                         | 38(30)   | 1.15                             | 3.30                                  |
| CDPH4D19FNP-6R8MC | 6R8   | 6.8 $\pm$ 20%                         | 50(40)   | 1.00                             | 3.02                                  |
| CDPH4D19FNP-8R0MC | 8R0   | 8.0 $\pm$ 20%                         | 56(45)   | 0.90                             | 2.68                                  |
| CDPH4D19FNP-100MC | 100   | 10 $\pm$ 20%                          | 65(52)   | 0.80                             | 2.32                                  |
| CDPH4D19FNP-150MC | 150   | 15 $\pm$ 20%                          | 95(75)   | 0.66                             | 1.88                                  |
| CDPH4D19FNP-220MC | 220   | 22 $\pm$ 20%                          | 135(108)                                       | 0.54                             | 1.44                                  |
| CDPH4D19FNP-330MC | 330   | 33 $\pm$ 20%                          | 200(160)                                       | 0.43                             | 1.25                                  |
| CDPH4D19FNP-470MC | 470   | 47 $\pm$ 20%                          | 293(234)                                       | 0.36                             | 1.03                                  |

**※ Description of part name**

CDPH4D19FNP-3R3M□



※1. Saturation Current: The DC current at which the inductance decreases to 65% of its nominal value (Ta=20°C)

※2. Temperature rise current: The DC current at which the temperature rise is  $\Delta t=40^\circ\text{C}$ . (Ta=20°C)