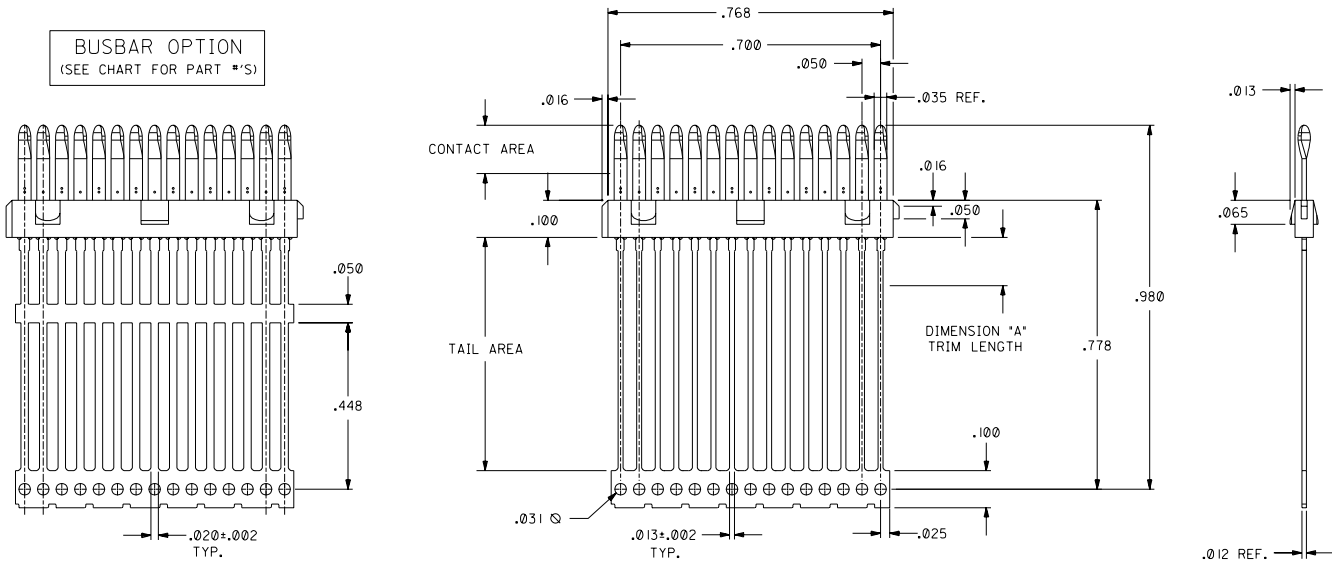


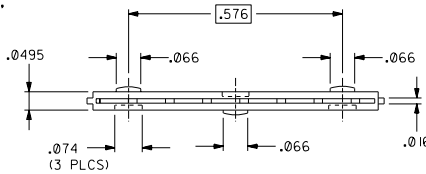
PART NUMBER	ENGINEERING NUMBER	DIMENSION "A"	BUSBAR OPTION	PLATING	
				CONTACT AREA	TAIL AREA
				051-24-2021	70984-1001
051-24-2022	70984-1002	.130±.010	NO	.000030/(0.00076) MINIMUM GOLD OVER A NICKEL UNDERPLATE	.000100/(0.00254) MINIMUM TIN OVER A NICKEL UNDERPLATE
70984-1007		N/A	YES	.000030/(0.00076) MINIMUM GOLD OVER A NICKEL UNDERPLATE	.000050/(0.00127) MINIMUM NICKEL
70984-1010		N/A	YES	.000030/(0.00076) MINIMUM GOLD OVER A NICKEL UNDERPLATE	.000200/(0.00508) MINIMUM TIN OVER A NICKEL UNDERPLATE
70984-1014		.130±.010	NO	GOLD FLASH OVER A NICKEL UNDERPLATE	.000100/(0.00254) MINIMUM TIN OVER A NICKEL UNDERPLATE



**NOTES**

- 1) MATERIALS:  
 INSULATOR: GLASS FILLED LIQUID CRYSTAL POLYMER (LCP), UL 94V-0, COLOR: BLACK.  
 TERMINAL: PHOSPHOR BRONZE, .012 THICK.  
 PLATING: SEE CHART
- 2) FOR PART NUMBERS AND PLATING OPTIONS, SEE CHART.
- 3) PARTS CONFORM TO PRODUCT SPECIFICATION PS-70928.
- 4) PACKAGED PER SPECIFICATION PK-70873-0335 APPLIES.

NOTE FOR LEAD FREE CONVERSION:  
 THE PRIMARY SHIPPING CARTON WILL BE LABELED "COMPLIANT TO ROHS DIRECTIVE 2002/95/EC AND ELV ANNEX II OF DIRECTIVE 2000/53/EC". CARTONS WITHOUT THIS LABEL MAY CONTAIN PRODUCT WITH LEAD.



DIMENSIONS ARE IN INCHES

UNLESS OTHERWISE SPECIFIED TOLERANCES ANGLES ARE 1/2°		MFG. SH. REV. LTR. REVISIONS											
<table border="1"> <tr> <th>INCH</th> <th>METRIC</th> </tr> <tr> <td>3 PLACE ± .010</td> <td>---</td> </tr> <tr> <td>2 PLACE ± .---</td> <td>---</td> </tr> <tr> <td>1 PLACE ± .---</td> <td>---</td> </tr> </table>		INCH	METRIC	3 PLACE ± .010	---	2 PLACE ± .---	---	1 PLACE ± .---	---	<table border="1"> <tr> <td>REV. 0</td> <td>REV. 0</td> </tr> </table>		REV. 0	REV. 0
INCH	METRIC												
3 PLACE ± .010	---												
2 PLACE ± .---	---												
1 PLACE ± .---	---												
REV. 0	REV. 0												
<table border="1"> <tr> <td>DATE</td> <td>DATE</td> </tr> <tr> <td>08/04/93</td> <td>08/04/93</td> </tr> </table>		DATE	DATE	08/04/93	08/04/93	<table border="1"> <tr> <td>SHEET NO.</td> <td>SHEET</td> </tr> <tr> <td>1 OF 1</td> <td>1</td> </tr> </table>		SHEET NO.	SHEET	1 OF 1	1		
DATE	DATE												
08/04/93	08/04/93												
SHEET NO.	SHEET												
1 OF 1	1												
<table border="1"> <tr> <td>DRG. BY: SCHMIDGALL</td> <td>CHK'D. BY: MOS</td> </tr> <tr> <td>APP'D. BY: CAB</td> <td>SCALE: 5:1</td> </tr> </table>		DRG. BY: SCHMIDGALL	CHK'D. BY: MOS	APP'D. BY: CAB	SCALE: 5:1	<table border="1"> <tr> <td>FILE NAME</td> <td>NO. DRAWING CONTAINS INFORMATION THAT IS PROPRIETARY TO MOLEX INC. AND SHOULD NOT BE USED WITHOUT WRITTEN PERMISSION.</td> </tr> <tr> <td>570984X1</td> <td>CD</td> </tr> </table>		FILE NAME	NO. DRAWING CONTAINS INFORMATION THAT IS PROPRIETARY TO MOLEX INC. AND SHOULD NOT BE USED WITHOUT WRITTEN PERMISSION.	570984X1	CD		
DRG. BY: SCHMIDGALL	CHK'D. BY: MOS												
APP'D. BY: CAB	SCALE: 5:1												
FILE NAME	NO. DRAWING CONTAINS INFORMATION THAT IS PROPRIETARY TO MOLEX INC. AND SHOULD NOT BE USED WITHOUT WRITTEN PERMISSION.												
570984X1	CD												
<table border="1"> <tr> <td>MOLEX INCORPORATED</td> <td>U.S.A.</td> </tr> <tr> <td>69532</td> <td></td> </tr> </table>		MOLEX INCORPORATED	U.S.A.	69532		<table border="1"> <tr> <td>SEE CHART</td> <td>SDA-70984-100</td> </tr> </table>		SEE CHART	SDA-70984-100				
MOLEX INCORPORATED	U.S.A.												
69532													
SEE CHART	SDA-70984-100												

F	LEADFREE ECN# UCP2004-1998 DMORGAN 04/04/14
E	ADD -1014 ASSY ECN UDT2002-0739 BBARKER 01/11/21
D	REVISED UDT2001-1516 SCHMIDGA 05/18/01
C1	REVISED PER ECN U5-1240 04/09/96
C	REVISED PER ECN U5-0746 1/30/95
B	ADDED PART NO. PER ECN U4-0997 04/20/94
A1	ADDED PART NO. PER ECN U3-1261 09/16/93
A	FIRST RELEASE PER ECN U3-1063 7.12.93