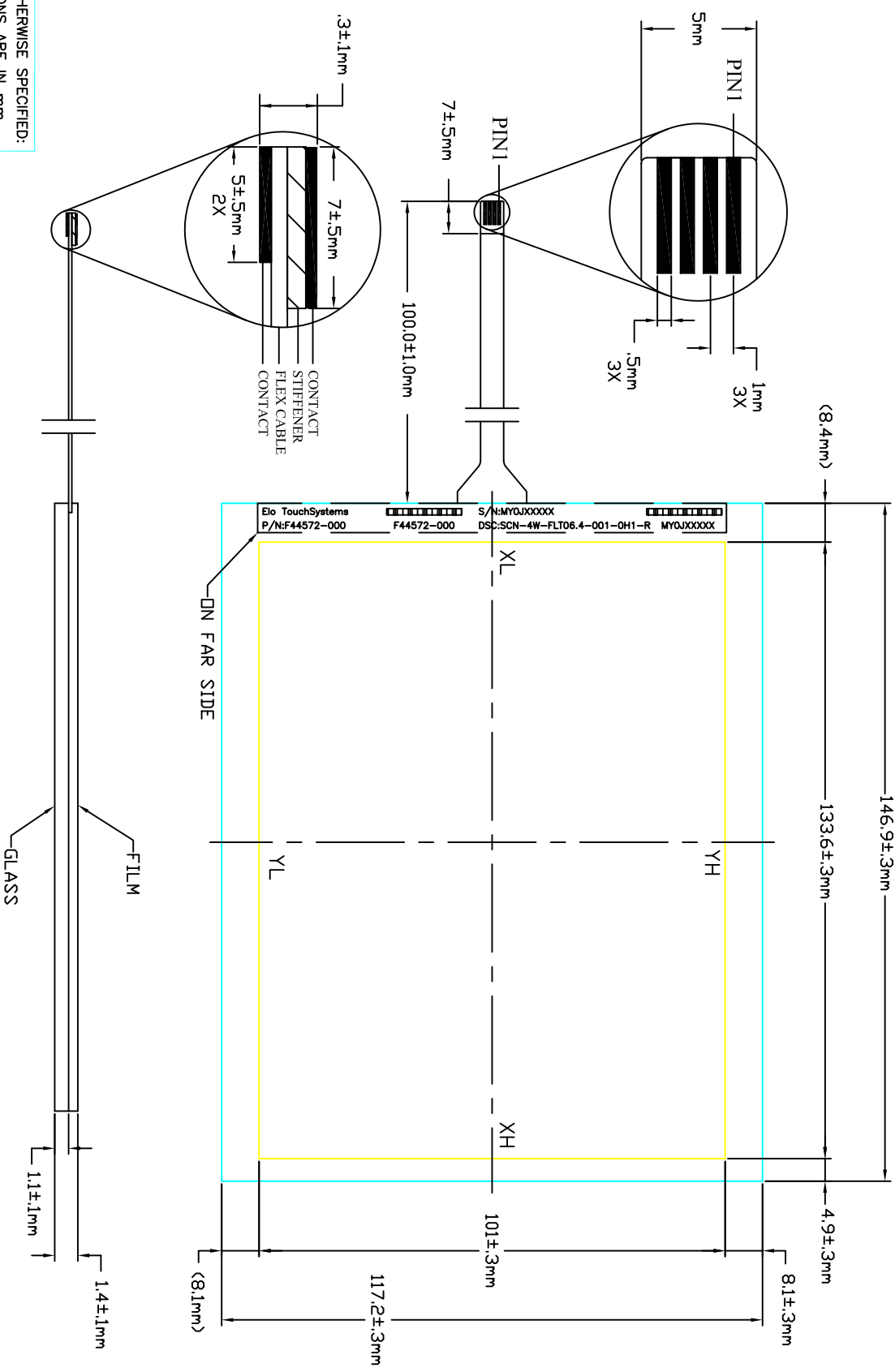


| CONNECTOR<br>PINOUT | PIN NO. | DESIGNATION |
|---------------------|---------|-------------|
| 1                   | YH      |             |
| 2                   | YH      |             |
| 3                   | XL      |             |
| 4                   | YL      |             |

AT 4 FOUR-WIRE TOUCHSCREEN  
 SCN-4W-FLT06.4-001-0H1-R  
 ELO P/N: F44572-000

- NOTES:
1. GLASS THICKNESS 1.1±0.1mm.
  2. FINISHED PART THICKNESS 1.4±0.1mm.
  3. LABEL TO BE ATTACHED ON THE GLASS SIDE AS SHOWN.
  4. CABLE IS ATTACHED TO THE LEFT SIDE OF TOUCHSCREEN AT CENTER POINT AS SHOWN.
  5. ROHS COMPLIANT TOUCHSCREEN.



UNLESS OTHERWISE SPECIFIED:  
 DIMENSIONS ARE IN mm

