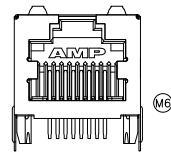
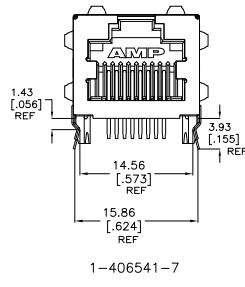
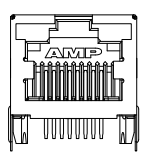


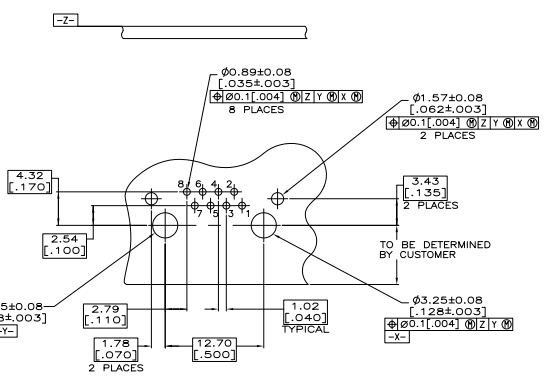
406541-1, -3, & -6
1-406541-1, 1-3, 1--6 & 1--9

- △ MATERIAL:
 HOUSING - HIGH TEMPERATURE THERMOPLASTIC,
 COLOR: BLACK, UL94V-0
 TERMINALS - 0.36[.014] THICK PHOS BRONZE
 PLATED WITH 3.81µm[.000150] MINIMUM THICK
 (SEE P/N TABLE) IN SOLDER AREA: 1.27µm
 [0.00050] MINIMUM GOLD IN LOCALIZED PLATE
 AREA. ENTIRE TERMINAL PLATED WITH 1.27µm
 [0.00050] MINIMUM THICK NICKEL.
 SHIELD - 0.196[.0077] THICK COPPER ZINC ALLOY
 PREPLATED WITH 1.27µm[0.00050] MINIMUM SATIN
 NICKEL WITH 2.03µm[0.00080] MINIMUM TIN
 POST DIPPED ON PCB GROUND TABS.
2. JACK CAVITY CONFORMS TO FCC RULES AND
 REGULATIONS PART 68, SUBPART F.
- △ SUGGESTED PANEL OPENING DIMENSIONS.
- △ SUGGESTED CLEARANCE BETWEEN TOP OF CONNECTOR
 AND TOP PANEL OPENING.
- △ ON 406541-4 & 1-406541-4 LOWER RIGHT HAND
 PANEL GROUND TAB IS NOT PRESENT.
- △ MANUFACTURING DATE CODE:
 LOCATED APPROX. AS SHOWN.
 FIRST 2 DIGITS = LAST 2 DIGITS OF YEAR.
 NEXT 2 DIGITS = MANUFACTURING WORK WEEK,
 LAST DIGIT = DAY OF WEEK WITH SUNDAY = 1.
- △ OBSOLETE PARTS: OBSOLETE CIS STREAMLINING PER
 D.RENAUD/D.SINISI

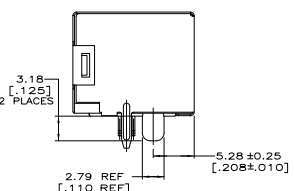


WITHOUT PANEL GROUNDS

WITHOUT SIDE PANEL GROUND



SUGGESTED PRINTED CIRCUIT BOARD LAYOUT
 (COMPONENT SIDE)



TRAY	2	2.54 [.100]	2-406541-1
TAPE/REEL	0	2.54 [.100]	2-406541-0
TRAY	6	3.05 [.120]	1-406541-9
TAPE/REEL	0	2.54 [.100]	1-406541-8
TRAY	6	2.54 [.100]	1-406541-7
TRAY	6	3.56 [.140]	1-406541-6
TRAY	0	2.54 [.100]	1-406541-5
TRAY	5	2.54 [.100]	1-406541-4
TRAY	6	2.00 [.079]	1-406541-3
TRAY	6	2.54 [.100]	1-406541-1
TRAY	6	3.56 [.140]	406541-6
TRAY	0	2.54 [.100]	406541-5
TRAY	5	2.54 [.100]	406541-4
TRAY	6	2.00 [.079]	406541-3
TRAY	6	2.54 [.100]	406541-1

TERMINAL PLATING	PACKAGING	PANEL GROUNDS	DIM A	PART NUMBER
OBsolete	OBsolete			
OBsolete				

THIS DRAWING IS A CONTROLLED DOCUMENT.

INCHES (mm) DECIMALS (mm) FRACTIONS (mm) FRACTIONS (mm)

TE Connectivity
 INVERT MODULAR JACK ASSEMBLY
 1 X 1, SHIELDED, PANEL GROUND

DATE: 00779
 CUSTOMER DRAWING: 406541