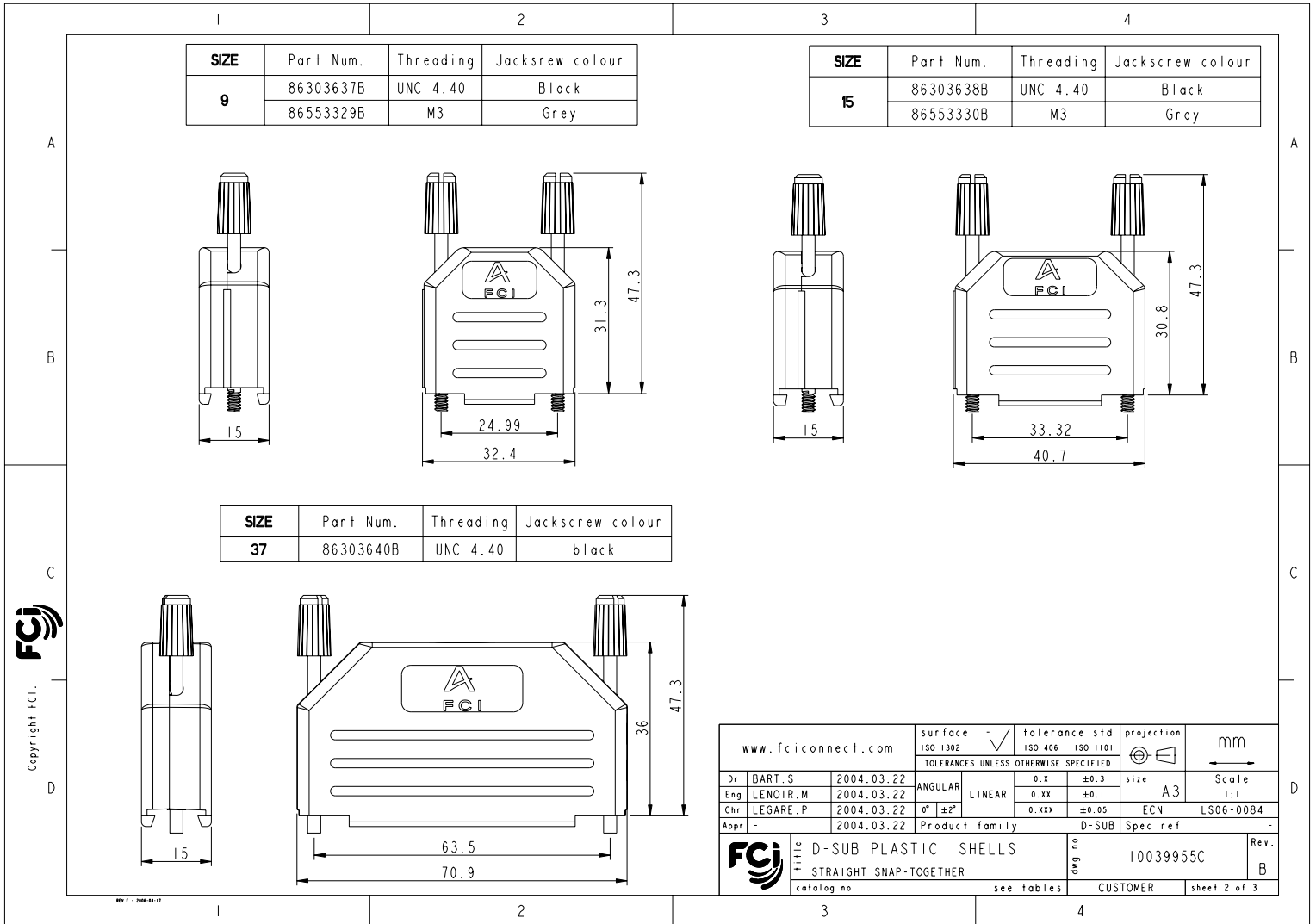


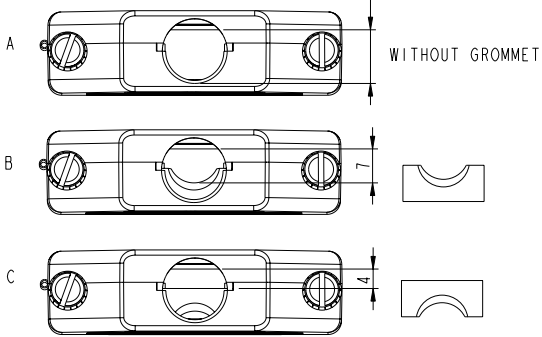
PDM: Rev:B STATUS: Released Printed: May 07, 2008



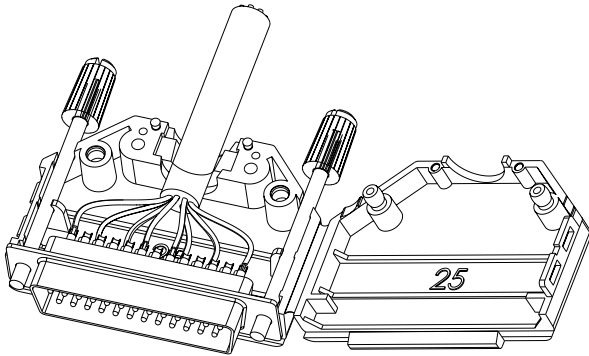
PDM: Rev:B STATUS: Released Printed: May 07, 2008

CABLING INSTRUCTIONS

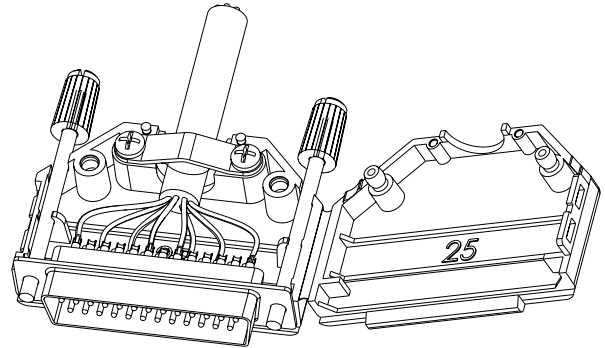
1- Choose grommet position



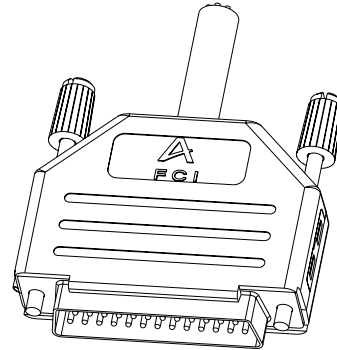
2- Mount connector and cable inside



3- Mount cableclamp and screws



4- Close the backshell and click together



www.fciconnect.com		surface ISO 1302	tolerance std ISO 406 ISO 1101	projection mm	
		TOLERANCES UNLESS OTHERWISE SPECIFIED			
Dr	BART.S	2004.03.22	ANGULAR	0.X	±0.3
Eng	LENOIR.M	2004.03.22	LINEAR	0.XX	±0.1
Chr	LEGARE.P	2004.03.22	0° ±2°	0.XXX	±0.05
Appr	-	2004.03.22	Product family	D-SUB	Spec ref
		D-SUB PLASTIC SHELLS STRAIGHT SNAP-TOGETHER		dwg no 10039955C	Rev. B
catalog no		see tables		CUSTOMER	sheet 3 of 3

Copyright FCI.

REV 1 - 2004-04-17