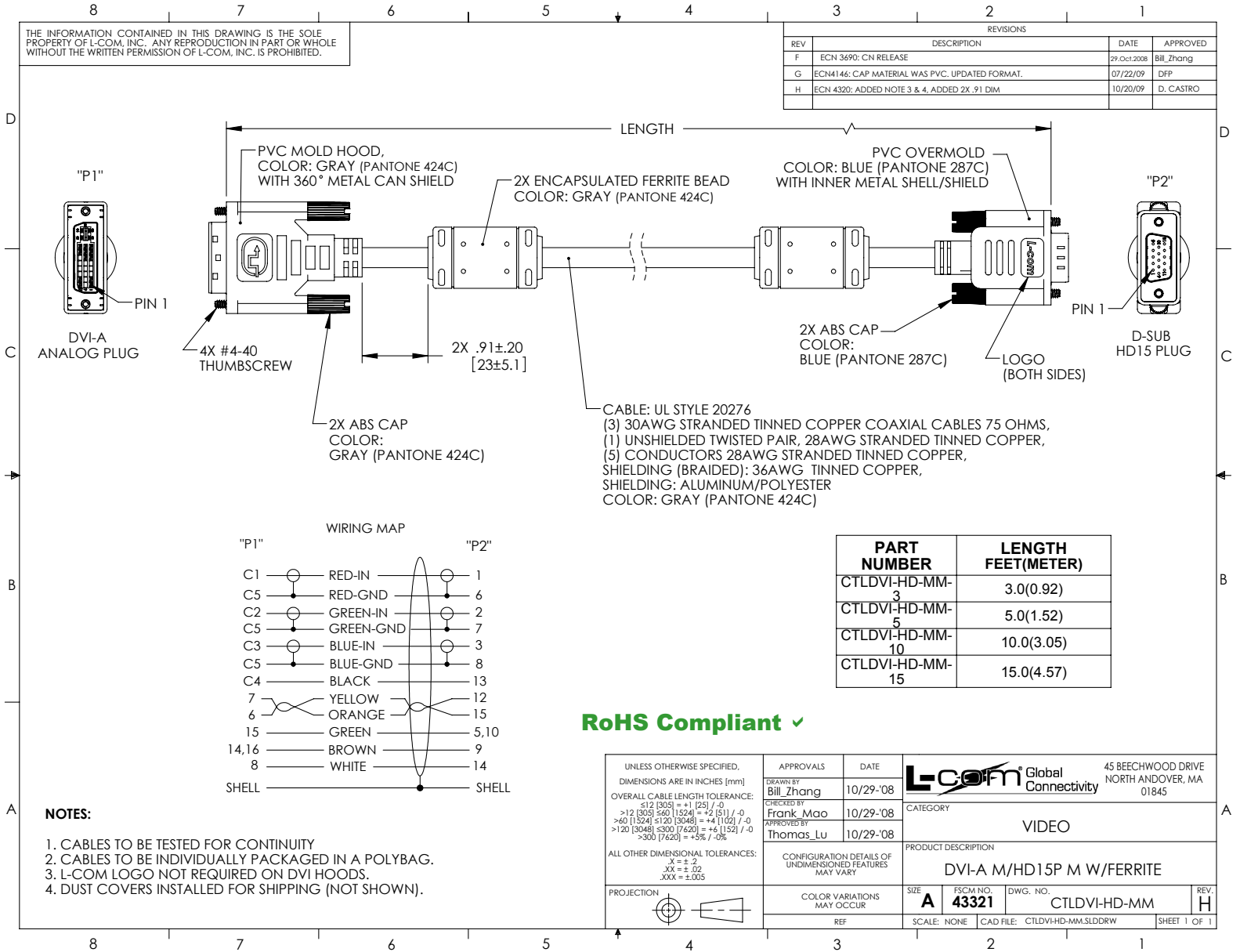


THE INFORMATION CONTAINED IN THIS DRAWING IS THE SOLE PROPERTY OF L-COM, INC. ANY REPRODUCTION IN PART OR WHOLE WITHOUT THE WRITTEN PERMISSION OF L-COM, INC. IS PROHIBITED.

REVISIONS			
REV	DESCRIPTION	DATE	APPROVED
F	ECN 3690: CN RELEASE	29-Oct-2008	Bill_Zhang
G	ECN4146: CAP MATERIAL WAS PVC. UPDATED FORMAT.	07/22/09	DFP
H	ECN 4320: ADDED NOTE 3 & 4. ADDED 2X .91 DIM	10/20/09	D. CASTRO



RoHS Compliant ✓

PART NUMBER	LENGTH FEET(METER)
CTLDVI-HD-MM-3	3.0(0.92)
CTLDVI-HD-MM-5	5.0(1.52)
CTLDVI-HD-MM-10	10.0(3.05)
CTLDVI-HD-MM-15	15.0(4.57)

- NOTES:**
1. CABLES TO BE TESTED FOR CONTINUITY
 2. CABLES TO BE INDIVIDUALLY PACKAGED IN A POLYBAG.
 3. L-COM LOGO NOT REQUIRED ON DVI HOODS.
 4. DUST COVERS INSTALLED FOR SHIPPING (NOT SHOWN).

UNLESS OTHERWISE SPECIFIED, DIMENSIONS ARE IN INCHES [mm] OVERALL CABLE LENGTH TOLERANCE: ≤12 [305] = +1 [25] / -0 >12 [305] ≤60 [1524] = +2 [51] / -0 >60 [1524] ≤120 [3048] = +4 [102] / -0 >120 [3048] ≤300 [7620] = +6 [152] / -0 >300 [7620] = +5% / -0%	APPROVALS	DATE	L-com Global Connectivity 45 BEECHWOOD DRIVE NORTH ANDOVER, MA 01845
	DRAWN BY Bill_Zhang	10/29-08	
CHECKED BY Frank_Mao	10/29-08	CATEGORY VIDEO	
APPROVED BY Thomas_Lu	10/29-08	PRODUCT DESCRIPTION DVI-A M/HD15P M W/FERRITE	
PROJECTION	COLOR VARIATIONS MAY OCCUR	SIZE A	FSCM NO. 43321
	REF	DWG. NO. CTLDVI-HD-MM	REV. H
		SCALE: NONE	CAD FILE: CTLDVI-HD-MM.SLDRW
		SHEET 1 OF 1	