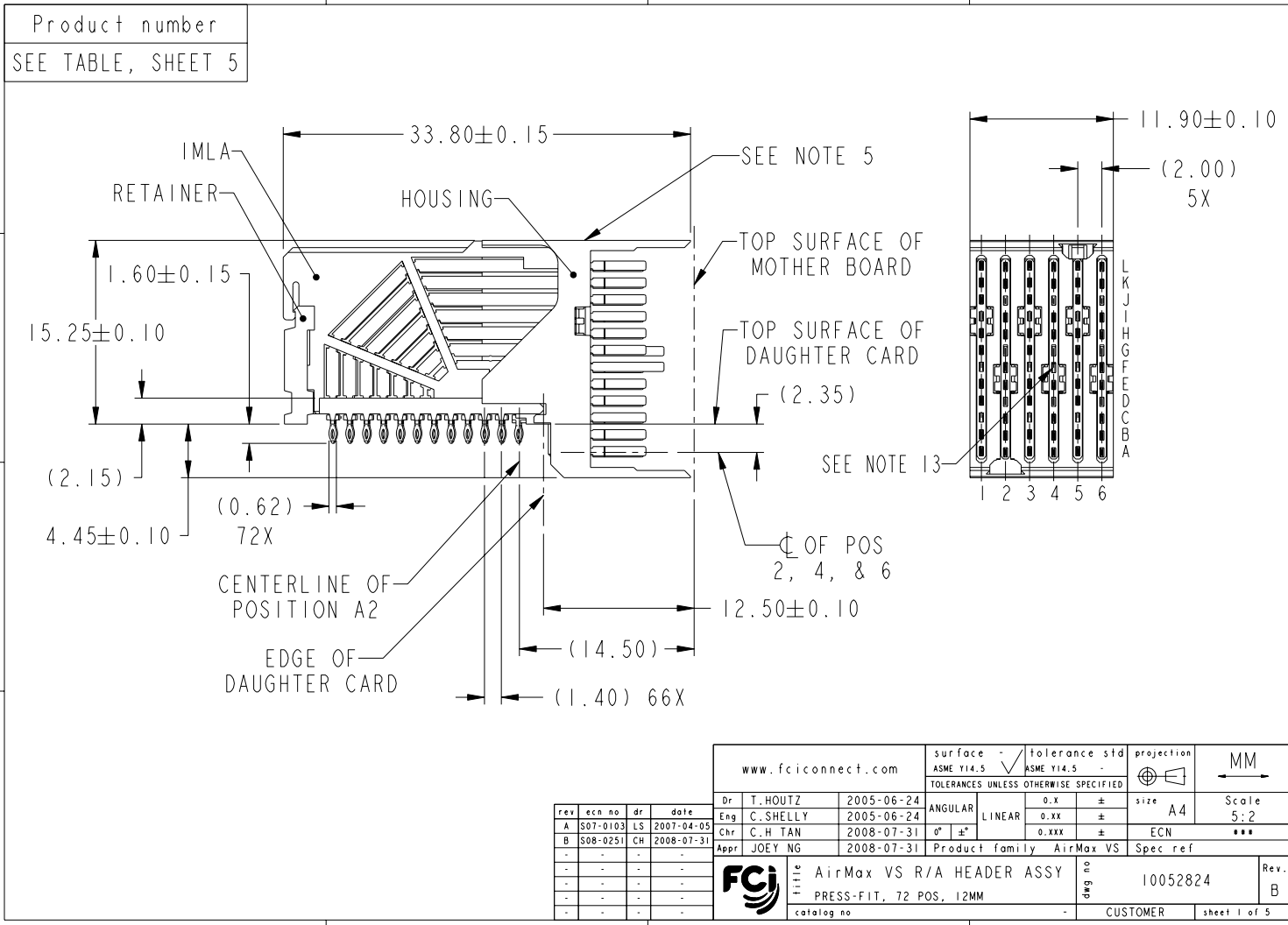




Copyright FCI.



REV F - 2008-04-17

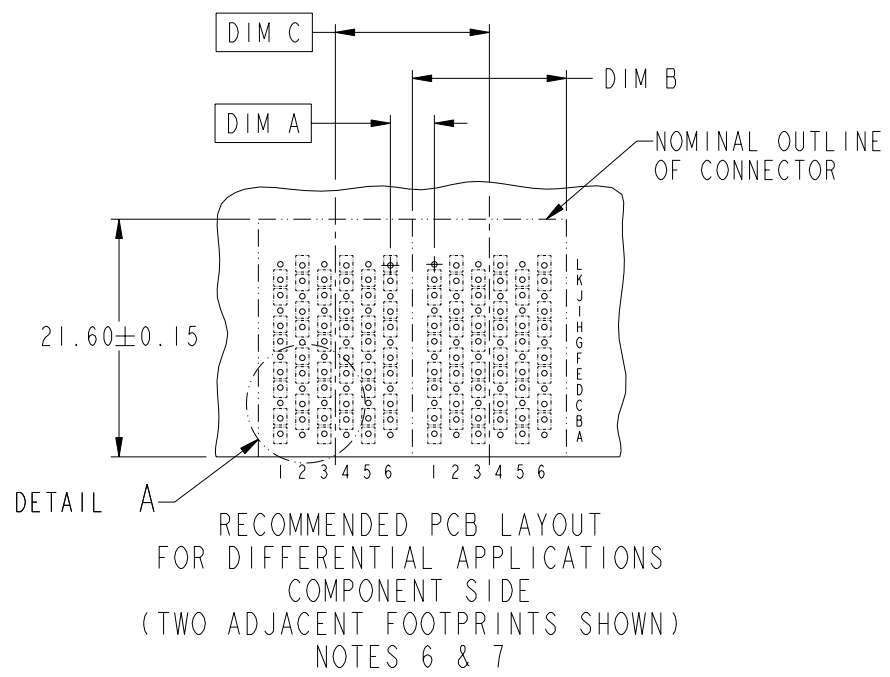
rev	ecn no	dr	date
A	S07-0103	LS	2007-04-05
B	S08-0251	CH	2008-07-31
-	-	-	-
-	-	-	-
-	-	-	-
-	-	-	-

www.fciconnect.com		surface	tolerance std	projection	MM
		ASME Y14.5	ASME Y14.5		
		TOLERANCES UNLESS OTHERWISE SPECIFIED			
Dr	T. HOUTZ	2005-06-24	ANGULAR	0.X	±
Eng	C. SHELLY	2005-06-24	LINEAR	0.XX	±
Chr	C. H. TAN	2008-07-31	0° ±	0.XXX	±
Appr	JOEY NG	2008-07-31	Product family	AirMax VS	Spec ref
FCI		AirMax VS R/A HEADER ASSY		dwg no	10052824
		PRESS-FIT, 72 POS, 12MM			
		catalog no	CUSTOMER		
			sheet 1 of 5		



Copyright FCI.

DESCRIPTION	DIM A	DIM B	DIM C
2-12MM MODULES PLACED END-TO-END	2.00	11.90 2X	12.00
1-12MM MODULE & 1-14MM MODULE PLACED END-TO-END	3.00	11.90 1X & 13.90 1X	13.00



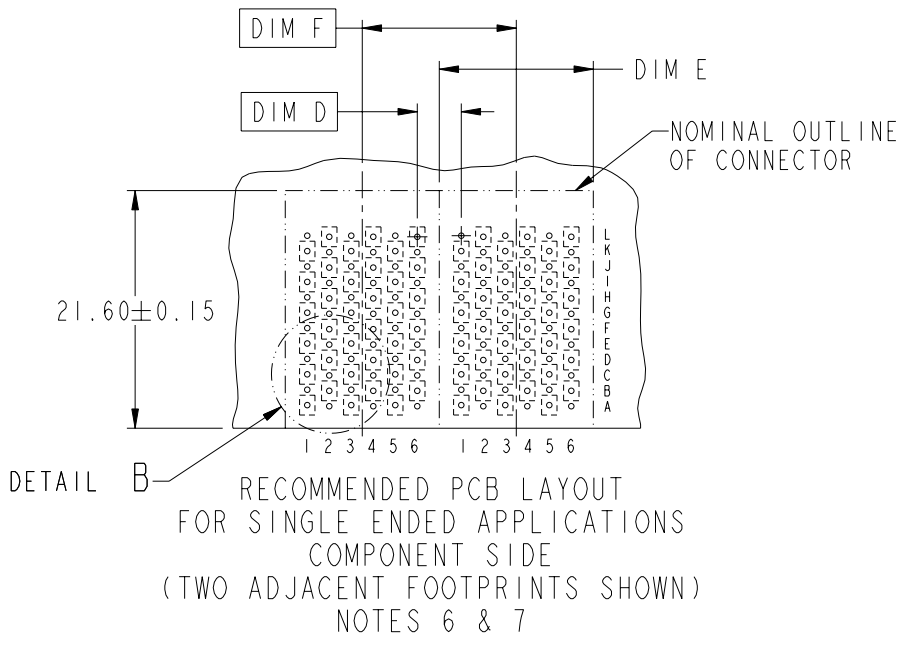
	title	AirMax VS R/A HEADER ASSY	dwg no	10052824	Rev.	B
		PRESS-FIT, 72 POS, 12MM				
	catalog no	-	CUSTOMER	sheet 2 of 5		

REV F - 2000-04-17



Copyright FCI.

DESCRIPTION	DIM D	DIM E	DIM F
2-12MM MODULES PLACED END-TO-END	2.00	11.90 2X	12.00
1-12MM MODULE & 1-14MM MODULE PLACED END-TO-END	3.00	11.90 1X & 13.90 1X	13.00



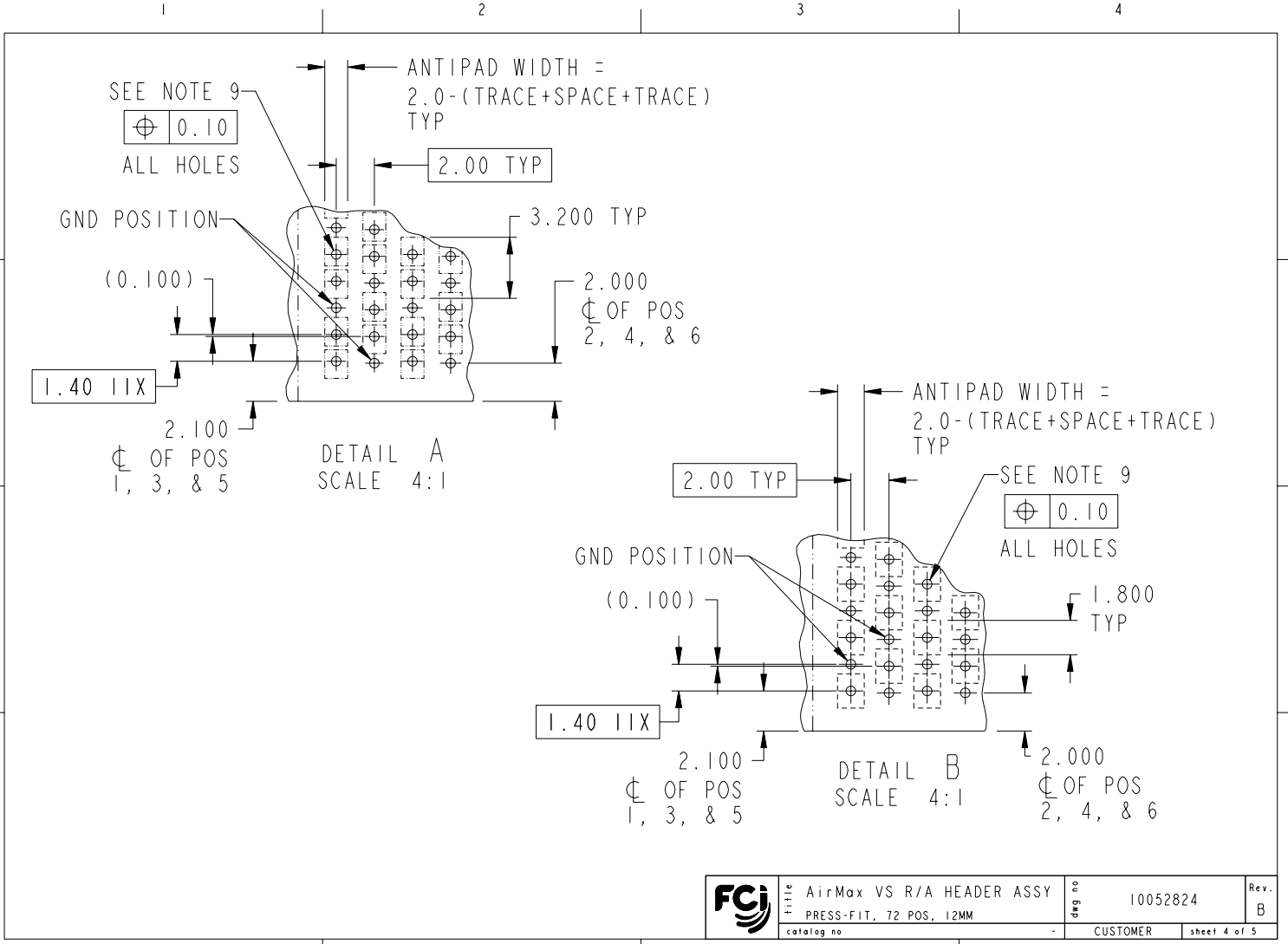
RECOMMENDED PCB LAYOUT
FOR SINGLE ENDED APPLICATIONS
COMPONENT SIDE
(TWO ADJACENT FOOTPRINTS SHOWN)
NOTES 6 & 7

	title	AirMax VS R/A HEADER ASSY		dwg no	10052824	Rev.	B
		PRESS-FIT, 72 POS, 12MM					
	catalog no	-		CUSTOMER	sheet 3 of 5		

REV F - 2000-04-17

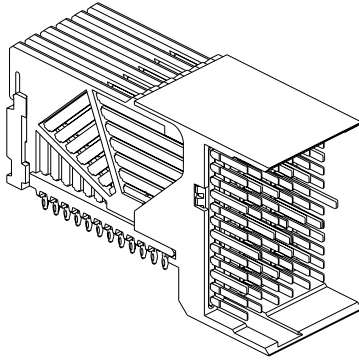





Copyright FCI.



REV F - 2000-04-17

	title	AirMax VS R/A HEADER ASSY		dwg no	10052824	Rev.	B
		PRESS-FIT, 72 POS, 12MM					
	catalog no	-		CUSTOMER	sheet 4 of 5		

		1	2	3	4
A	PART NUMBER	PRESS-FIT TAIL PLATING TYPE	SHORT DETECT CONTACT		
	10052824-101	TIN/LEAD ALLOY OVER NICKEL	NO		
	10052824-101LF	TIN OVER NICKEL (LEAD FREE)			
	10052824-111	TIN/LEAD ALLOY OVER NICKEL	YES (SEE NOTE 13)		
10052824-111LF	TIN OVER NICKEL (LEAD FREE)				
NOTES:					
1. CONNECTOR MATERIALS: HOUSING & RETAINER: HIGH TEMP THERMOPLASTIC, NATURAL, UL94V-0 IMLA PLASTIC: HIGH TEMP THERMOPLASTIC, BLACK, UL94V-0 CONTACT: COPPER ALLOY					
2. CONTACT PLATING: SEPARABLE INTERFACE: PERFORMANCE-BASED PLATING, QUALIFIED TO MEET THE REQUIREMENTS OF FCI PRODUCT SPECIFICATION GS-12-239, INCLUDING TELCORDIA GR-1217-CORE (NOVEMBER 1995) CENTRAL OFFICE. PRESS-FIT TAILS: SEE TABLE					
3. PRODUCT SPECIFICATION: GS-12-239					
4. APPLICATION SPECIFICATION: GS-20-035					
5. PRODUCT MARKING, (PART NUMBER & LOT CODE), ON THIS SURFACE					
6. REFER TO CUSTOMER DRAWING 10035911 FOR INFORMATION REGARDING PCB LAYOUT OF POWER AND GUIDE MODULES RELATIVE TO SIGNAL MODULES					
7. POSITIONS F OF ODD NUMBERED COLUMNS AND POSITIONS G OF EVEN NUMBERED COLUMNS CORRESPOND TO EARLY MATE HEADER PINS					
8. THERE IS NO GROUND BUSSING WITHIN THE CONNECTOR SYSTEM					
9. REFER TO CUSTOMER DRAWING 10045979 FOR INFORMATION ON PCB HOLE DIAMETERS AND PLATING OPTIONS.					
10. THIS PRODUCT MEETS EUROPEAN UNION DIRECTIVES AND OTHER COUNTRY REGULATIONS AS DESCRIBED IN GS-22-008.					
11. THE HOUSING WILL WITHSTAND EXPOSURE TO 260°C PEAK TEMPERATURE FOR 40 SECONDS IN A CONVECTION, INFRA-RED OR VAPOR PHASE REFLOW OVEN.					
12. PACKAGING MEETS GS-14-920 LEAD FREE LABELING SPECIFICATION.					
13.  MATING PIN F4 IS SHORTER THAN ALL REMAINING SIGNAL PINS. NOMINAL MATING WIPE FOR PIN F4 IS 0.5MM LESS THAN ALL REMAINING SIGNAL PINS.					
14. A  SYMBOL WILL BE NEXT TO ANY DIMENSION, VIEW, OR NOTE WHICH HAS BEEN MODIFIED WITH THE CURRENT DRAWING REVISION.					
				title AirMax VS R/A HEADER ASSY PRESS-FIT, 72 POS, 12MM catalog no -	
				dwg no 10052824 Rev. B	
				CUSTOMER sheet 5 of 5	
REV F - 2000-04-17					
		1	2	PDM: Rev:B STATUS:Released 4Printed: Dec 01, 2010	