

## Barbara reflectors for Bridgelux BXRA C/N/W- 0800/1200/2000 series of LEDs



- Specially designed for Bridgelux BXRA-C/N/W- 0800/1200/2000 series of LEDs.
- Special care taken to make a uniform white or warm white illumination.
- Diameter 70mm
- Reflector is made of aluminum coated PC (120°C/248F) with protective laquer (110°C/230F)
- Please check fastening details from this link:  
([http://www.ledil.com/datasheets/DataSheet\\_GLUES.pdf](http://www.ledil.com/datasheets/DataSheet_GLUES.pdf))

### LENS TYPES

NAME	ORDERING CODE	FWHM Angle
Barbara Spot	C11552 Barbara-S	±8°
Barbara Wide	C11553 Barbara-W	±20°

© Ledil Oy – PRELIMINARY - Subject to change without prior notice

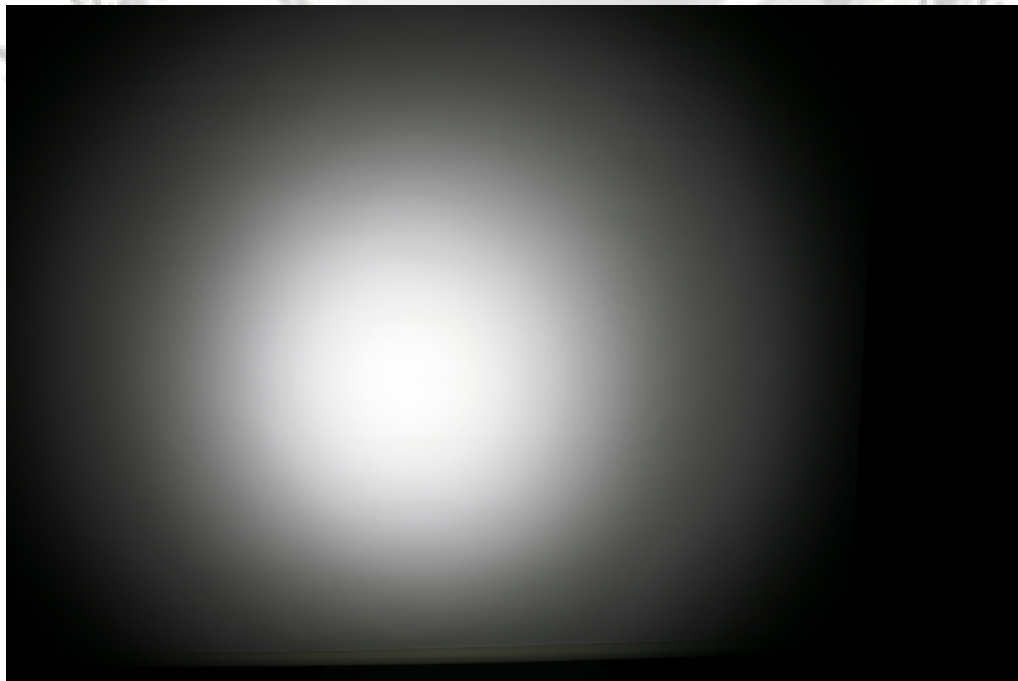
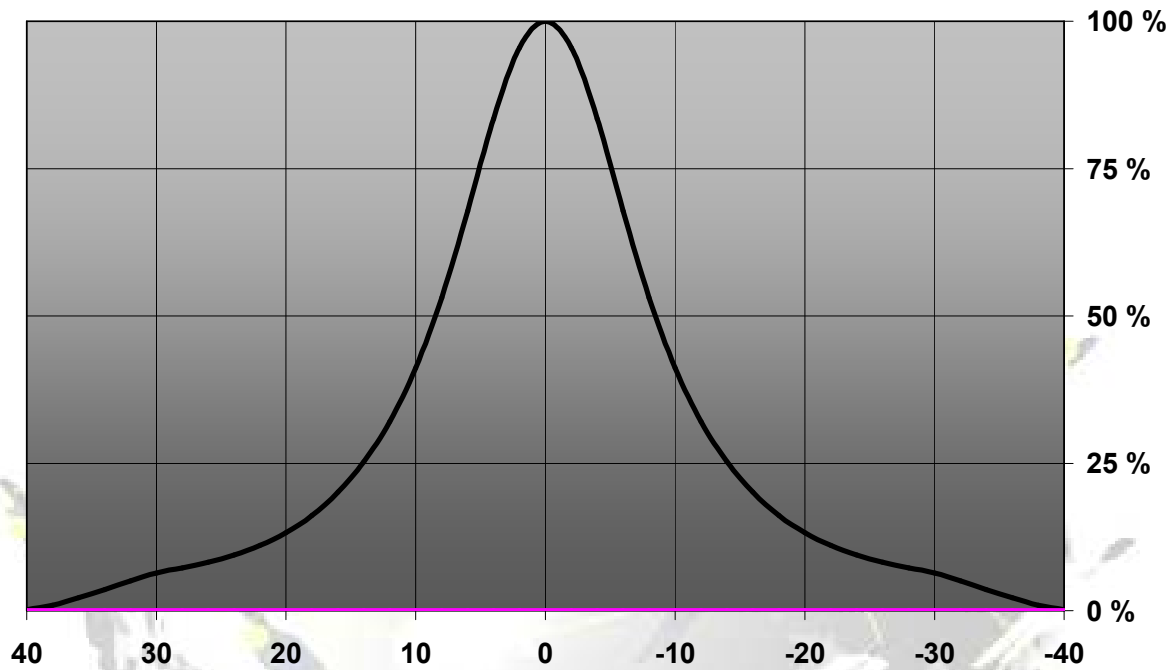
Ledil Oy  
Tehdaskatu 13  
FIN-24100 SALO, Finland

[www.ledil.com](http://www.ledil.com)  
email: [ledil@ledil.com](mailto:ledil@ledil.com)  
FAX: +358-2-733 8001

2010-08-18

**MEASUREMENT DATA**

Relative intensity of C11552\_Barbara-S



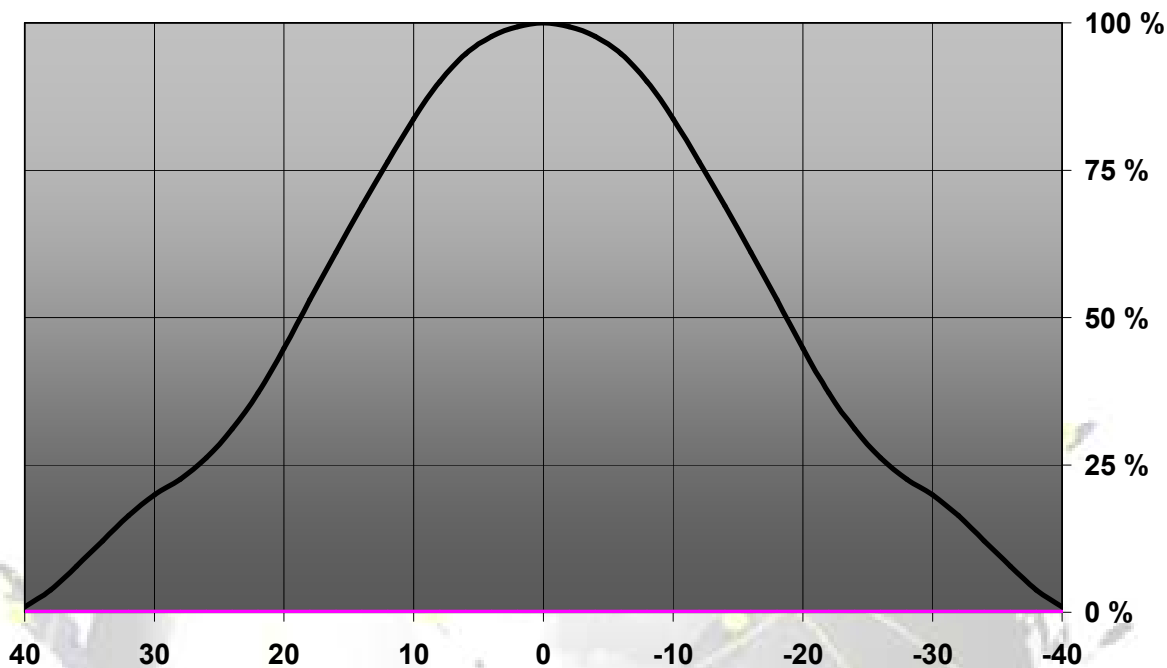
© Ledil Oy – PRELIMINARY - Subject to change without prior notice

Ledil Oy  
Tehdaskatu 13  
FIN-24100 SALO, Finland

[www.ledil.com](http://www.ledil.com)  
email: [ledil@ledil.com](mailto:ledil@ledil.com)  
FAX: +358-2-733 8001

2010-08-18

Relative intensity of C11553\_Barbara-W



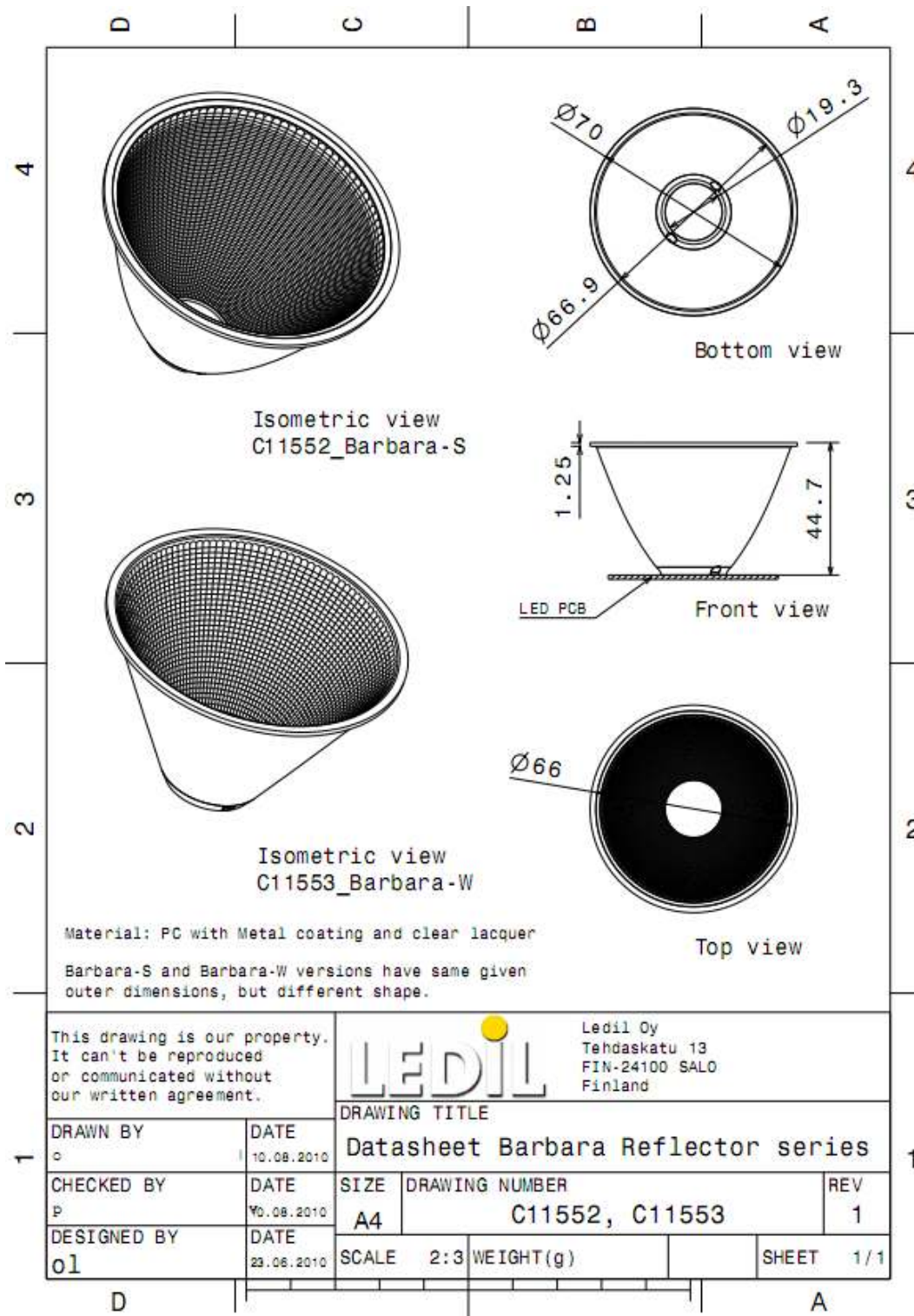
© Ledil Oy – PRELIMINARY - Subject to change without prior notice

Ledil Oy  
Tehdaskatu 13  
FIN-24100 SALO, Finland

[www.ledil.com](http://www.ledil.com)  
email: [ledil@ledil.com](mailto:ledil@ledil.com)  
FAX: +358-2-733 8001

2010-08-18

## DRAWINGS



© Ledil Oy – PRELIMINARY - Subject to change without prior notice

Ledil Oy  
 Tehdaskatu 13  
 FIN-24100 SALO, Finland

[www.ledil.com](http://www.ledil.com)  
 email: [ledil@ledil.com](mailto:ledil@ledil.com)  
 FAX: +358-2-733 8001

2010-08-18