

Brooke reflectors for Bridgelux BXRA C/N/W-0800/1200/2000 series of LEDs



- Specially designed for Bridgelux BXRA-C/N/W- 0800/1200/2000 series of LEDs.
- Special care taken to make a uniform white or warm white illumination. Lenses work well with other colors, too.
- Very compact dimensions
- Lens material optical grade metallized PC. Allows use of high current and temperature conditions

LENS TYPES

NAME	ORDERING CODE	FWHM Angle
Brooke Spot	CA11181_Brooke-S	±12°
Brooke Medium	CA11182_Brooke-M	±16°
Brooke Wide	CA11183_Brooke-W	±25°



© Ledil Oy – PRELIMINARY - Subject to change without prior notice

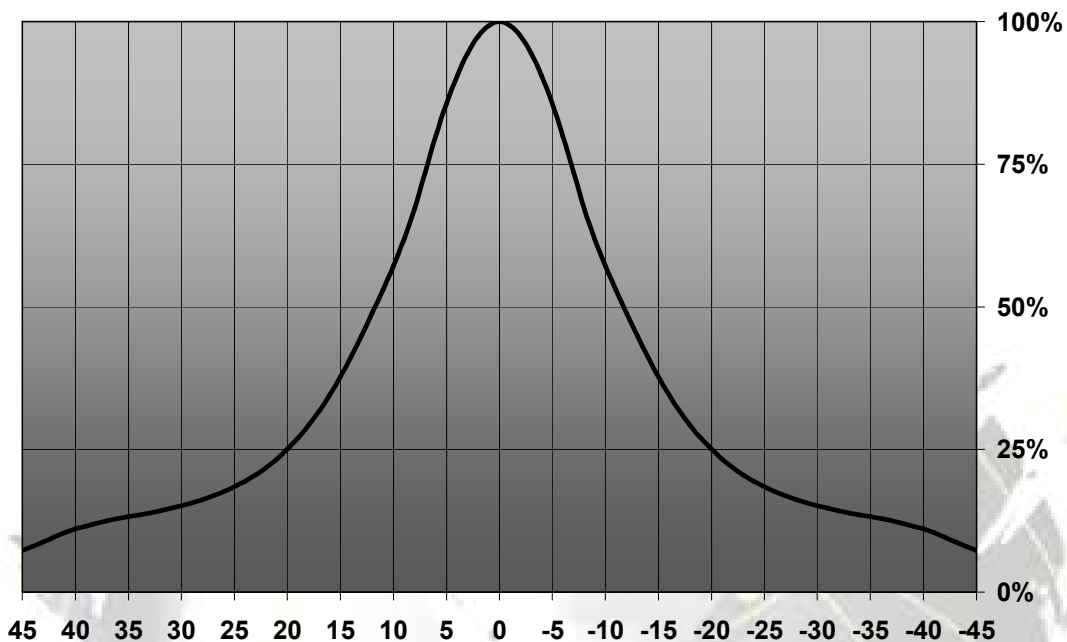
Ledil Oy
Tehdaskatu 13
FIN-24100 SALO, Finland

www.ledil.com
email: ledil@ledil.com
FAX: +358-2-733 8001

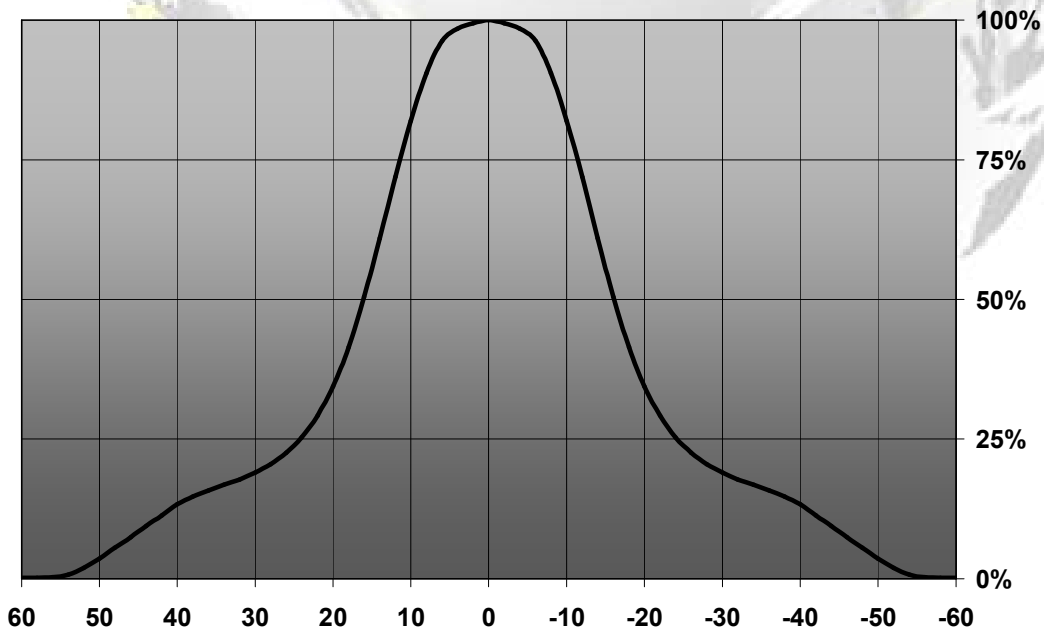
2009-12-03

Measurement data

Relative Intensity of CA11181_Brooke-S



Relative Intensity of CA11182_Brooke-M



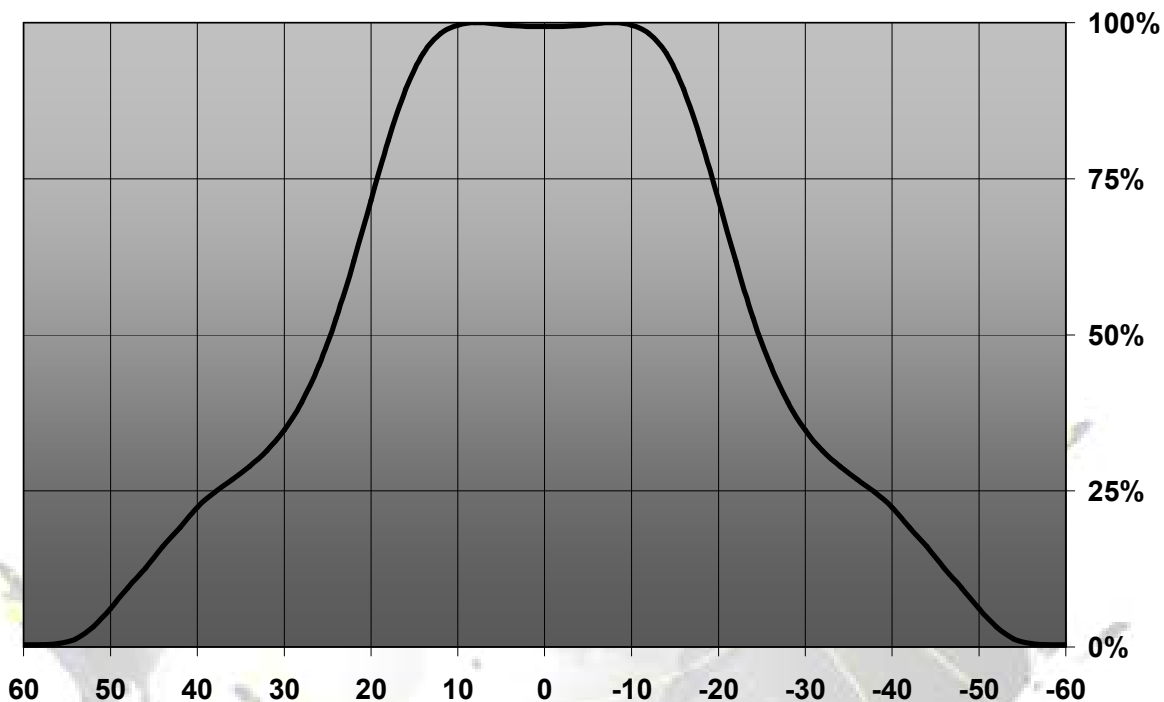
© Ledil Oy – PRELIMINARY - Subject to change without prior notice

Ledil Oy
 Tehdaskatu 13
 FIN-24100 SALO, Finland

www.ledil.com
 email: ledil@ledil.com
 FAX: +358-2-733 8001

2009-12-03

Relative Intensity of CA11183_Brooke-W



EULUMDAT & IES FILES AVAILABLE BY REQUEST

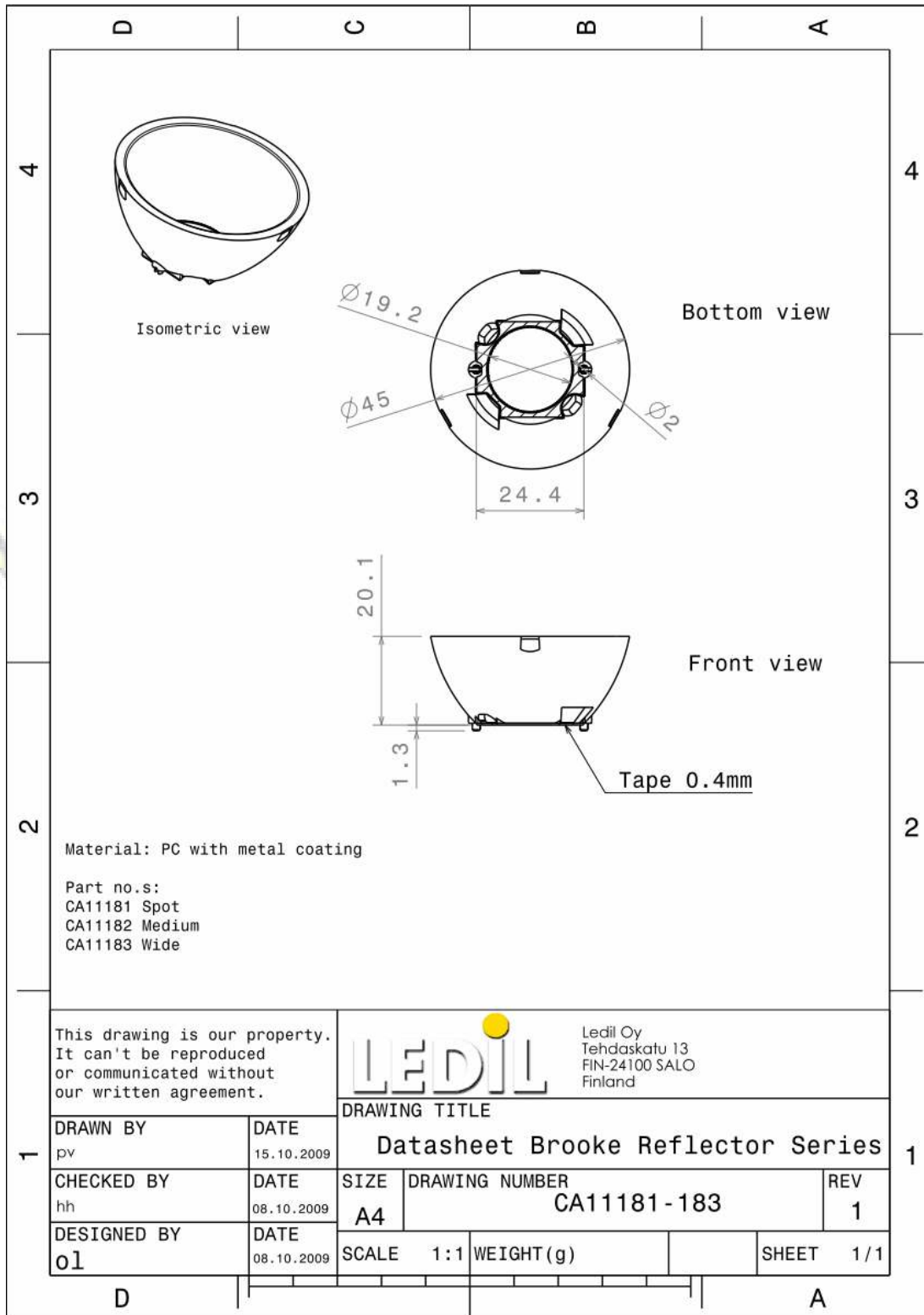
© Ledil Oy – PRELIMINARY - Subject to change without prior notice

Ledil Oy
 Tehdaskatu 13
 FIN-24100 SALO, Finland

www.ledil.com
 email: ledil@ledil.com
 FAX: +358-2-733 8001

2009-12-03

DRAWINGS



© Ledil Oy – PRELIMINARY - Subject to change without prior notice

Ledil Oy
Tehdaskatu 13
FIN-24100 SALO, Finland

www.ledil.com
email: ledil@ledil.com
FAX: +358-2-733 8001

2009-12-03