

MICRO SWITCH

A DIVISION OF MINNEAPOLIS-HONEYWELL REGULATOR COMPANY
FREEPORT, ILLINOIS

FED. MFR. CODE 91929

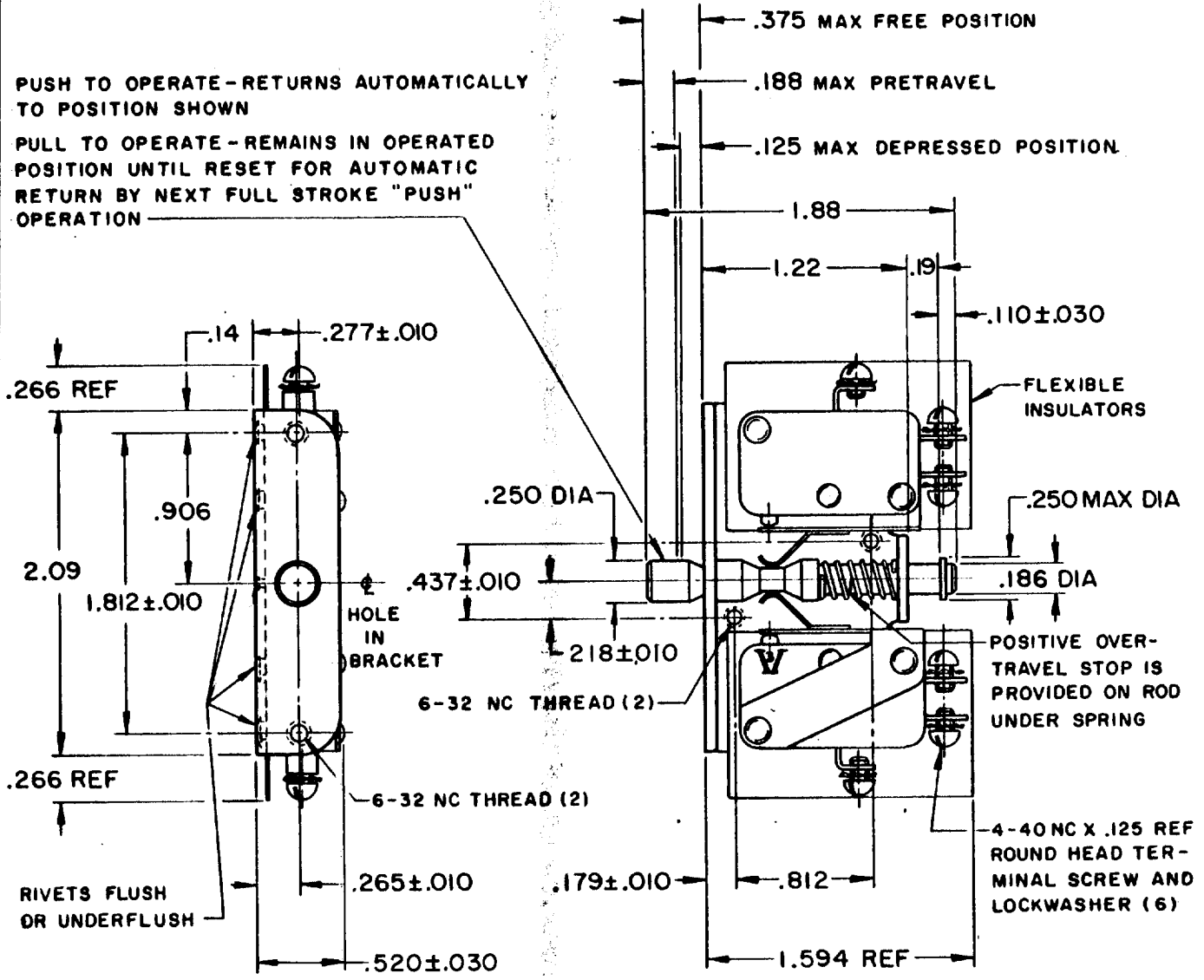
ASSEMBLY-SWITCH

CATALOG LISTING

24AC1

PUSH TO OPERATE - RETURNS AUTOMATICALLY TO POSITION SHOWN

PULL TO OPERATE - REMAINS IN OPERATED POSITION UNTIL RESET FOR AUTOMATIC RETURN BY NEXT FULL STROKE "PUSH" OPERATION



NOTE-

- 1- UNIT INCLUDES CAT. LIST. V3-13 BASIC SWITCH (2)
- 2- SWITCHES DO NOT NECESSARILY OPERATE SIMULTANEOUSLY
- 3- NOTCH IN ACTUATOR ROD WILL PERMIT .035 DISPLACEMENT BETWEEN END OF ROD AND HOLE IN BRACKET
- 4- BASIC SWITCH PLASTIC PARTS ARE MADE OF MINERAL FILLED PHENOLICS
- 5- ACTUATOR ROD MADE OF HIGH STRENGTH PLASTIC

THIS DRAWING COVERS A PROPRIETARY ITEM AND IS THE PROPERTY OF MICRO SWITCH, A DIVISION OF MINNEAPOLIS-HONEYWELL REGULATOR CO. THIS DRAWING IS NOT TO BE COPIED OR USED WITHOUT THE APPROVAL OF MICRO SWITCH.

CHARACTERISTICS

TOTAL TRAVEL
.250 APPROX. PUSH DIRECTION
.188 APPROX. PULL DIRECTION

ELECTRICAL DATA

CONTACT ARRANGEMENT
S P D T (2)

BREAK DISTANCE
.040 APPROX

(A) 15 A-1/3 HP-125 OR 250 VAC
1/2 A-125 VDC; 1/4 A-250 VDC

(B)

SCALE FULL

DO NOT SCALE PRINT

UNLESS OTHERWISE SPECIFIED
DIMENSIONS ARE IN INCHES
TOLERANCES ARE:
ONE PLACE (.0) ± .030
TWO PLACE (.00) ± .015
THREE PLACE (.000) ± .008
ANGLES ±

WEIGHT

24AC1

M

DRAWING NUMBER

X

X

ISSUE

3

REPLACES

RELEASE NO. SR 8877

CHECK

60

CHECK

60

CHECK

60

CHECK

60

CHECK

60

CHECK

60

CHECK

60

CHECK

60

CHECK

60

CHECK

60

CHECK

60

CHECK

60

CHECK

60

CHECK

60

CHECK

60

DRAWN

FO-50378