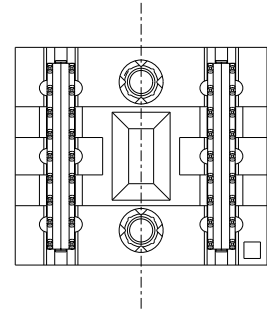
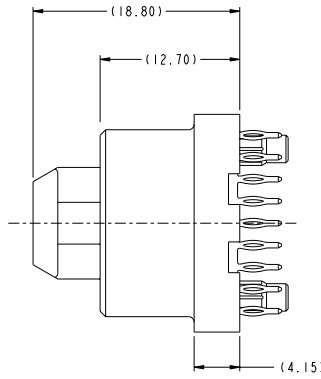
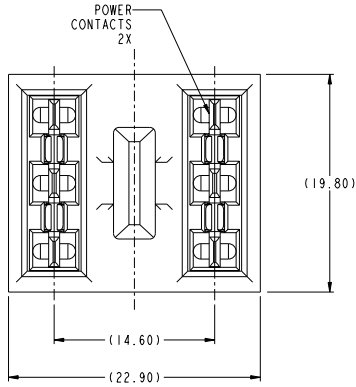
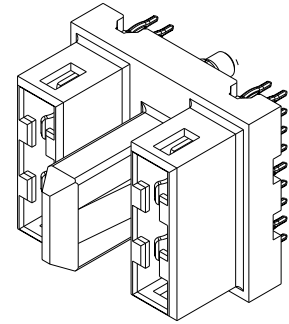
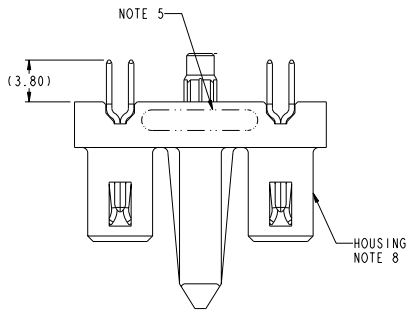


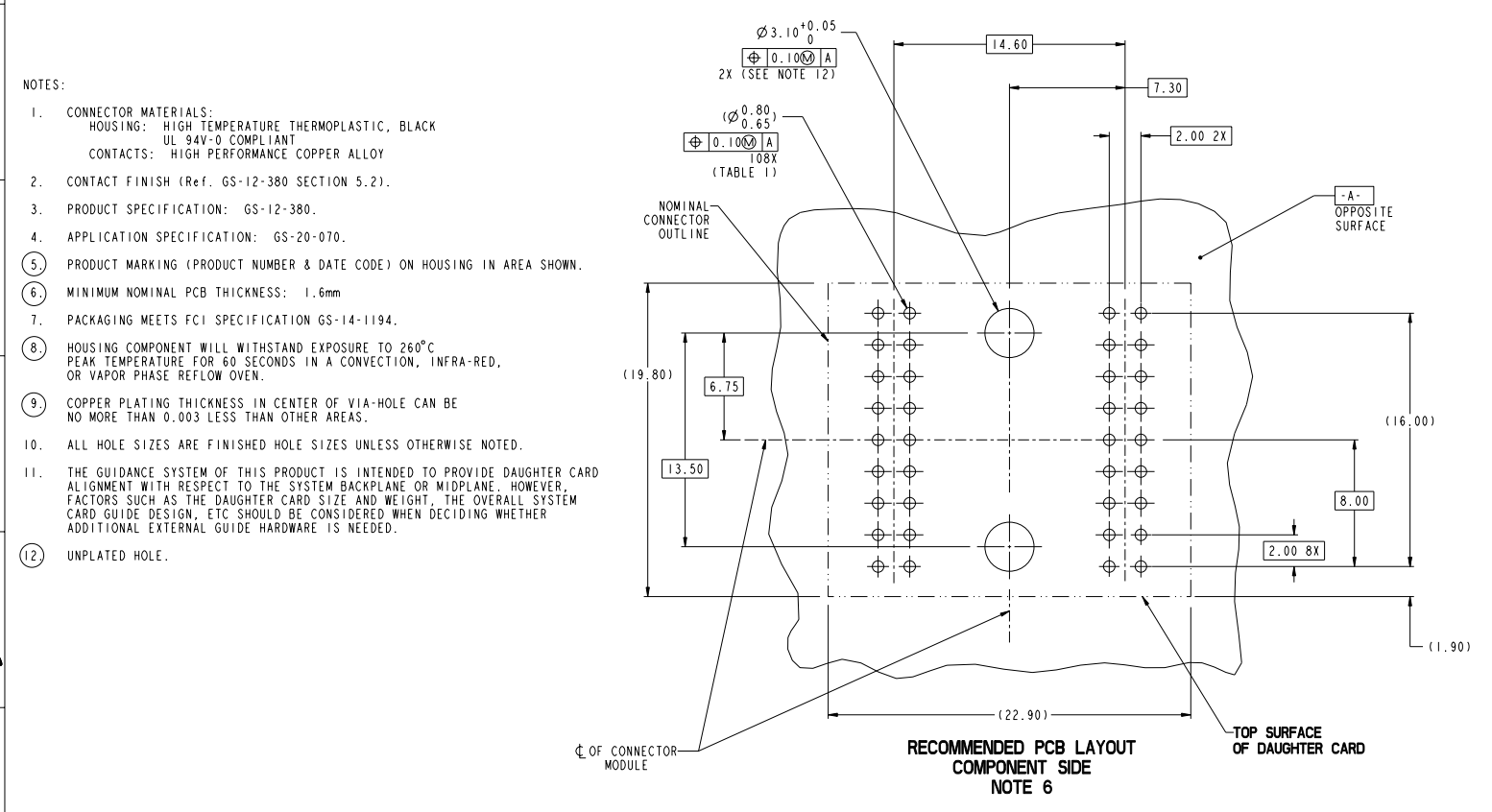
1	2	3	4	5	6	7	8
PART NUMBER	TAIL PLATING	TAIL TYPE					
I0087939-001LF	Sn	PRESS-FIT					



Copyright FCI
FCI

www.fciconnect.com				surface	tolerance std	projection	MM
				ASME Y14.5	ASME Y14.5	ASME Y14.5	
TOLERANCES UNLESS OTHERWISE SPECIFIED							
dr	T. HOUTZ	2008-04-25		ANGULAR	0.X	±.3	Scale
Eng	H. NGO	2008-04-25		LINEAR	0.XX	±.10	4:1
chr	H. NGO	2008-04-25	0" ±.2"		0.XXX	±.050	ECN
appr	H. NGO	2008-04-25					
Product family				Product family		Product family	
ASSEMBLY, RECEPT, VERT,				ASSEMBLY, RECEPT, VERT,		ASSEMBLY, RECEPT, VERT,	
2 POSN BACKPLANE MODULE W/GUIDE				2 POSN BACKPLANE MODULE W/GUIDE		2 POSN BACKPLANE MODULE W/GUIDE	
catalog no				catalog no		catalog no	
				10087939		10087939	
				CUSTOMER		CUSTOMER	
				sheet 1 of 2		sheet 1 of 2	
				Rev. B		Rev. B	
				PDM: Rev: B		PDM: Rev: B	
				STATUS: Released		STATUS: Released	
				Printed: Dec 18, 2010		Printed: Dec 18, 2010	

TOP LAYER DESCRIPTION	TABLE 1 (HCI POWER) PLATED THROUGH-HOLE REQUIREMENTS							
	DRILLED HOLE DIAMETER	COPPER THICKNESS	TIN-LEAD THICKNESS	NICKEL THICKNESS	GOLD THICKNESS	TIN THICKNESS	SILVER THICKNESS	FINISHED HOLE DIAMETER
TIN-LEAD	0.81-0.86 (0.85 DRILL)	0.025 - 0.050	0.005 - 0.015	--	--	--	--	0.65 - 0.80
IMMERSSION TIN	0.81-0.86 (0.85 DRILL)	0.025 - 0.050	--	--	--	0.9 - 1.5um	--	0.70 - 0.80
IMMERSSION SILVER	0.81-0.86 (0.85 DRILL)	0.025 - 0.050	--	--	--	--	0.15 - 0.65um	0.70 - 0.80
COPPER (SEE NOTE 9)	0.81-0.86 (0.85 DRILL)	0.025 - 0.050	--	--	--	--	--	0.70 - 0.80
GOLD	0.81-0.86 (0.85 DRILL)	0.025 - 0.050	--	0.003 - 0.007	FLASH UP TO 0.0002	--	--	0.69 - 0.80



FCJ	THIS ASSEMBLY, RECEPT, VERT.	part no	10087939	Rev.	B
	2 POSN BACKPLANE MODULE W/GUIDE	customer	CUSTOMER	sheet	2 of 2

Copyright FCJ