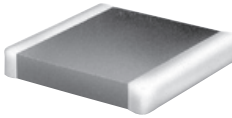


Electrical / Environmental

BMB

Surface Mount Multilayer Chip Beads, 0402 - 1812 Industry Sizes



- Operating Temperature Range
Standard: -25°C to +85°C
Optional Extended Temperature Range: -40°C to +125°C
- Resistance to Solder Heat: 260°C for 10 sec.

Specifications / Packaging

0402, 0603, 0805, 1206, 1210, 1806 & 1812 Electrical Characteristics - Standard Speed

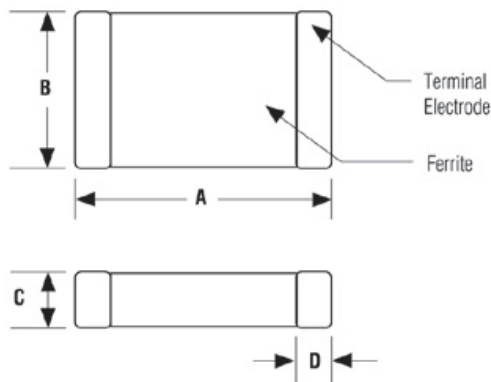
Part Number	Impedance Z Ω ±25% @ 100 MHz	DCR Ω Max	Rated Current mA Max.	7" Reel Qty (Units)	Part Number	Impedance Z Ω ±25% @ 100 MHz	DCR Ω Max	Rated Current mA Max.	7" Reel Qty (Units)
BMB0402A-600	60	0.35	300	10K	BMB0805A-301	300	0.20	500	4K
BMB0402A-121	120	0.40	300	10K	BMB0805A-401	400	0.30	500	4K
BMB0402A-301	300	0.80	200	10K	BMB0805A-601	600	0.30	500	4K
BMB0402A-601	600	1.00	200	10K	BMB0805A-102	1000	0.35	300	4K
BMB0603A-100	10	0.05	600	4K	BMB0805A-152	1500	0.40	200	4K
BMB0603A-300	30	0.08	600	4K	BMB0805A-202	2000	0.50	200	4K
BMB0603A-400	40	0.10	600	4K	BMB0805A-222	2200	0.50	200	4K
BMB0603A-600	60	0.10	600	4K	BMB1206A-260	26	0.05	600	3K
BMB0603A-680	68	0.10	600	4K	BMB1206A-310	31	0.05	600	3K
BMB0603A-800	80	0.10	400	4K	BMB1206A-500	50	0.08	600	3K
BMB0603A-121	120	0.15	400	4K	BMB1206A-600	60	0.08	600	3K
BMB0603A-181	180	0.30	300	4K	BMB1206A-700	70	0.10	600	3K
BMB0603A-221	220	0.30	300	4K	BMB1206A-900	90	0.15	500	3K
BMB0603A-301	300	0.35	300	4K	BMB1206A-121	120	0.15	500	3K
BMB0603A-451	450	0.40	300	4K	BMB1206A-151	150	0.15	500	3K
BMB0603A-601	600	0.45	200	4K	BMB1206A-201	200	0.20	500	3K
BMB0603A-751	750	0.60	100	4K	BMB1206A-501	500	0.25	500	3K
BMB0603A-102	1000	0.60	100	4K	BMB1206A-601	600	0.30	500	3K
BMB0805A-070	7	0.05	600	4K	BMB1206A-801	800	0.30	200	3K
BMB0805A-110	11	0.05	600	4K	BMB1206A-102	1000	0.40	200	3K
BMB0805A-170	17	0.05	600	4K	BMB1206A-122	1200	0.40	200	3K
BMB0805A-260	26	0.05	600	4K	BMB1206A-152	1500 @ 50MHz	0.50	200	3K
BMB0805A-320	32	0.05	600	4K	BMB1206A-202	2000 @ 30MHz	0.50	200	3K
BMB0805A-400	40	0.05	600	4K	BMB1210A-310	31	0.30	400	2K
BMB0805A-600	60	0.15	600	4K	BMB1210A-600	60	0.30	400	2K
BMB0805A-800	80	0.15	600	4K	BMB1210A-900	90	0.30	400	2K
BMB0805A-900	90	0.15	600	4K	BMB1806A-800	80	0.10	400	2K
BMB0805A-121	120	0.15	500	4K	BMB1806A-101	100	0.20	300	2K
BMB0805A-151	150	0.15	500	4K	BMB1806A-151	150	0.30	200	2K
BMB0805A-181	180	0.20	500	4K	BMB1812A-700	70	0.40	200	1K
BMB0805A-221	220	0.20	500	4K	BMB1812A-121	120	0.40	200	1K

Specifications / Packaging

0603, 0805 & 1206 Electrical Characteristics - High Speed

Part Number	Impedance $Z \Omega \pm 25\%$ @ 100 MHz	DCR Ω Max	Rated Current mA Max.	7" Reel Qty (Units)	Part Number	Impedance $Z \Omega \pm 25\%$ @ 100 MHz	DCR Ω Max	Rated Current mA Max.	7" Reel Qty (Units)
BMB0603B-121	120	0.45	200	4K	BMB0805B-601	600	0.35	200	4K
BMB0603B-301	300	0.45	200	4K	BMB0805B-102	1000	0.45	200	4K
BMB0603B-601	600	0.50	200	4K	BMB1206B-121	120	0.20	200	3K
BMB0805B-121	120	0.25	200	4K	BMB1206B-301	300	0.30	200	3K
BMB0805B-301	300	0.25	200	4K	BMB1206B-601	600	0.45	200	3K

Outline Dimensions (Inch/mm)



Part #	A Dim.	B Dim.	C Dim.	D Dim.
BMB 0402 (1005)	.04±.004 1.0±.10	.02±.004 .50±.10	.02±.004 .50±.10	.01±.004 .25±.10
BMB 0603 (1608)	.063±.006 1.6±0.15	.031±.006 .80±0.15	.031±.006 .80±0.15	.012±.008 .30±.20
BMB 0805 (2012)	.079±.008 2.0±0.2	.049±.008 1.25±0.2	.035±.008 .90±0.2	.020±.012 .50±.30
BMB 1206 (3216)	.126±.008 3.2±0.2	.063±.008 1.6±0.2	.043±.008 1.1±0.2	.020±.012 .50±.30
BMB 1210 (3225)	.126±.008 3.2±0.2	.098±.008 2.5±0.2	.051±.008 1.3±0.2	.020±.012 .50±.30
BMB 1806 (4516)	.18±.01 4.5±0.25	.063±.008 1.6±0.2	.063±.008 1.6±0.2	.024±.016 .60±.40
BMB 1812 (4532)	.18±.01 4.5±0.25	.126±.01 3.2±0.25	.06±.01 1.5±0.25	.024±.016 .60±.40

Ordering Information

