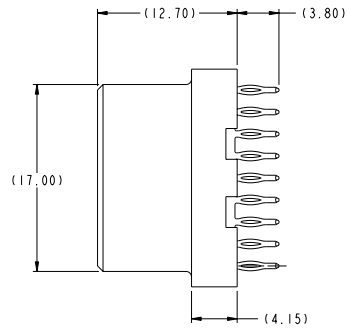
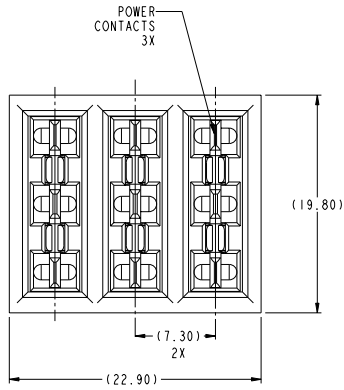
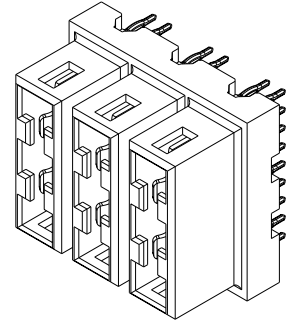
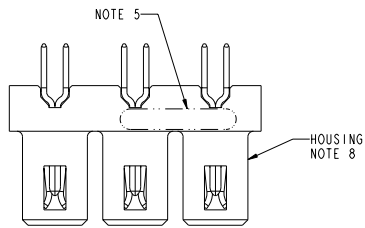


1	2	3	4	5	6	7	8
PART NUMBER	TAIL PLATING	TAIL TYPE					
10078902-001LF	Sn	PRESS-FIT					



Copyright FCJ

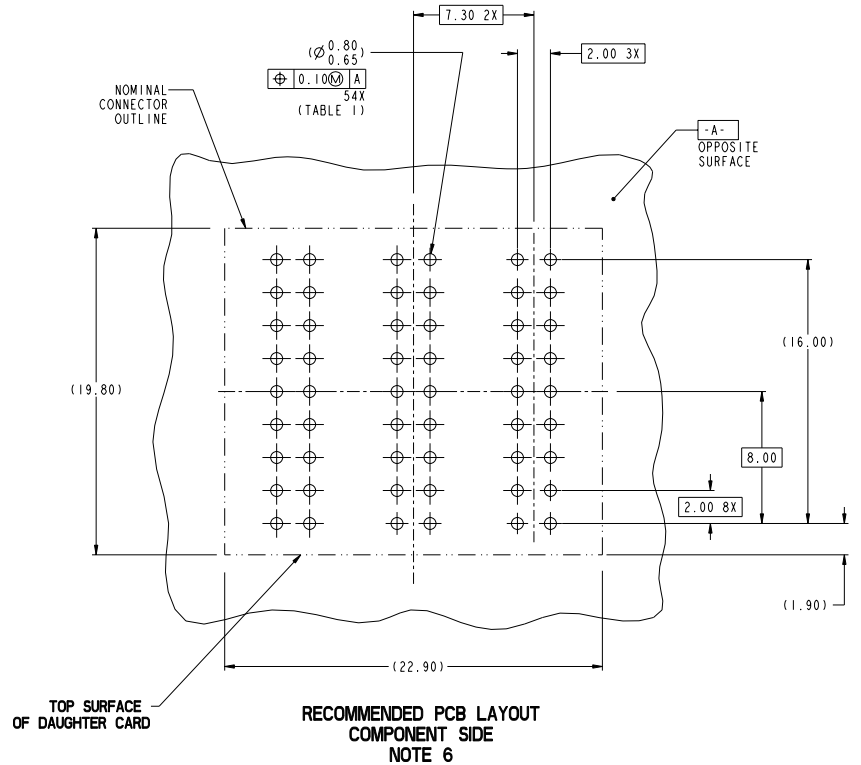
www.fciconnect.com				surface	tolerance std	projection	MM
				ASME Y14.5	ASME Y14.5	ASME Y14.5	
TOLERANCES UNLESS OTHERWISE SPECIFIED							
Dr	W. J. SWAIN	2007-06-18		ANGULAR	0.X	±.3	Scale
Eng	W. J. SWAIN	2007-06-18		LINEAR	0.XX	±.10	A2 4:1
Chr	W. J. SWAIN	2007-06-18	0° ±2°		0.XXX	±.050	ECN
Appr	H. NGO	2008-05-05		Product family		HCI Spec ref	
FCJ ASSEMBLY, RECEPT, VERT,				Part no	10078902	Rev.	
3 POSN ISOLATED POWER CONTACT				Customer		Sheet 1 of 2	B
catalog no							

PDM: Rev: B STATUS: Released 8 Printed: Dec 18, 2010

TOP LAYER DESCRIPTION	TABLE 1 (HCI POWER) PLATED THROUGH-HOLE REQUIREMENTS							
	DRILLED HOLE DIAMETER	COPPER THICKNESS	TIN-LEAD THICKNESS	NICKEL THICKNESS	GOLD THICKNESS	TIN THICKNESS	SILVER THICKNESS	FINISHED HOLE DIAMETER
TIN-LEAD	0.81-0.86 (0.85 DRILL)	0.025 - 0.050	0.005 - 0.015	--	--	--	--	0.65 - 0.80
IMMERION TIN	0.81-0.86 (0.85 DRILL)	0.025 - 0.050	--	--	--	0.9 - 1.5um	--	0.70 - 0.80
IMMERION SILVER	0.81-0.86 (0.85 DRILL)	0.025 - 0.050	--	--	--	--	0.15 - 0.65um	0.70 - 0.80
COPPER (SEE NOTE 9)	0.81-0.86 (0.85 DRILL)	0.025 - 0.050	--	--	--	--	--	0.70 - 0.80
GOLD	0.81-0.86 (0.85 DRILL)	0.025 - 0.050	--	0.003 - 0.007	FLASH UP TO 0.0002	--	--	0.69 - 0.80

NOTES:

- CONNECTOR MATERIALS:  
HOUSING: HIGH TEMPERATURE THERMOPLASTIC, BLACK  
UL 94V-0 COMPLIANT  
CONTACTS: HIGH PERFORMANCE COPPER ALLOY
- CONTACT FINISH (Ref. GS-12-380 SECTION 5.2)
- PRODUCT SPECIFICATION: GS-12-380.
- APPLICATION SPECIFICATION: GS-20-070.
- PRODUCT MARKING (PRODUCT NUMBER & DATE CODE) ON HOUSING IN AREA SHOWN.
- MINIMUM NOMINAL PCB THICKNESS: 1.6mm
- PACKAGING MEETS FCI SPECIFICATION GS-14-1194
- HOUSING COMPONENT WILL WITHSTAND EXPOSURE TO 260°C PEAK TEMPERATURE FOR 60 SECONDS IN A CONVECTION, INFRA-RED, OR VAPOR PHASE REFLOW OVEN.
- COPPER PLATING THICKNESS IN CENTER OF VIA-HOLE CAN BE NO MORE THAN 0.003 LESS THAN OTHER AREAS.
- ALL HOLE SIZES ARE FINISHED HOLE SIZES UNLESS OTHERWISE NOTED.



FCJ	THIS ASSEMBLY, RECEPT, VERT,	Part No	10078902	Rev.	B
	3 POSN ISOLATED POWER CONTACT	catalog no	CUSTOMER	Sheet 2 of 2	

PDM: Rev:B STATUS: Released 8 Printed: Dec 18, 2010

Copyright FCI  
FCJ