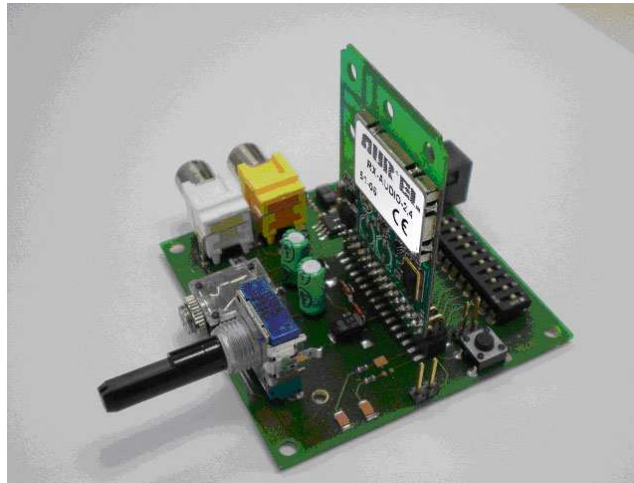


DEMO Board for RX AUDIO 2.4 (6502001005G)

Technical Information and Usage Instructions

Specification

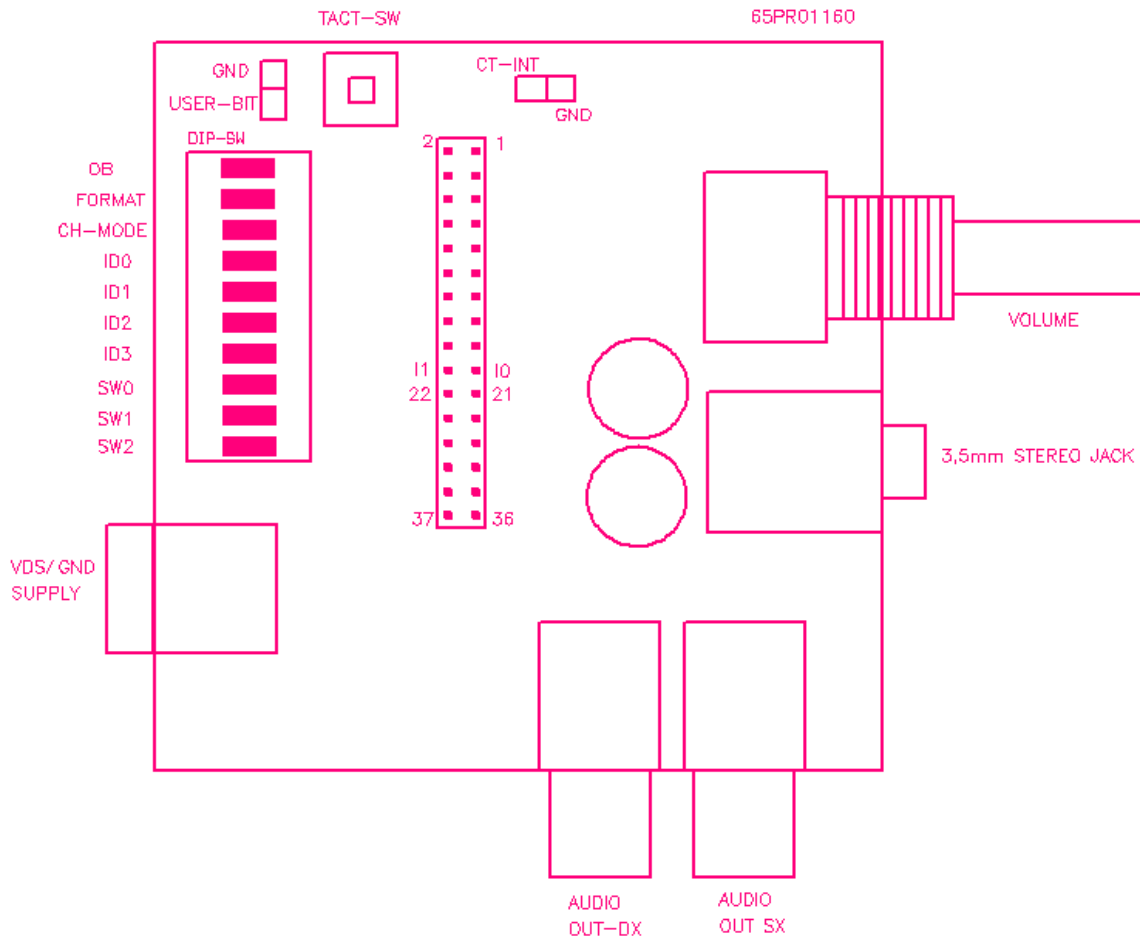
Model	Demo Board for RX-AUDIO-2.4
Supply voltage	7 ÷ 12 Vdc
Current consumption	100 mA (typ)
Operating temperature	-10 ÷ +60 C



Board dimensions: 80 x 67 x 21 mm (no Mod. Inst.)

Le caratteristiche tecniche possono subire variazioni senza preavviso. La AUREL S.p.A non si assume la responsabilità di danni causati dall'uso improprio del dispositivo. Technical features are subject to change without notice. AUREL S.p.A. does not assume responsibilities for any damages caused by the device's misuse.

Board Lay-out:



Le caratteristiche tecniche possono subire variazioni senza preavviso. La AUREL S.p.A non si assume la responsabilità di danni causati dall'uso improprio del dispositivo.
Technical features are subject to change without notice. AUREL S.p.A. does not assume responsibilities for any damages caused by the device's misuse.

Description of Board identified items:

Name	Description
VOLUME	Stereo headphones amplifier volume control
3.5mm STEREO JACK	Stereo Headphones amplifier output (decoupled via capacitors)
AUDIO_OUT Dx	Module DAC_R output (decoupled via 10microF capacitor)
AUDIO_OUT Sx	Module DAC_L output (decoupled via 10microF capacitor)
Vdc_GND Supply	Supply Voltage plug – 7 to 12 Volts DC – Positive central contact
TACT_SW	Push button to change channel, connected to TACT_SW module pin
USER_BIT	Pin to send out user serialized data (max 5Kbps), connected to USER_BIT module pin
CT_INU	Pin connected to module CT_INU pin
DIP SW	10 position dip switch bank – Each switch connected to same name module line - When closed, related line is forced to GND

See **650201005G RX-AUDIO-2.4 Data Sheet and User manual for more information.**

Usage instructions

The Demo Board accepts AUREL RX AUDIO 2.4 (650201005G) module.

Module should be inserted taking care of orientation: module label should be facing the Audio Regulation potentiometer.

Proper voltage (7 to 12 Vdc) should be applied at Vdc/GND plug (Positive at internal contact, negative to external contact).

Connect a stereo audio amplifier to AUDIO_OUT_Dx and AUDIO_OUT_Sx DIN connectors (suggested load at about 10 Kohm).

In alternative, connect a stereo headphone to 3.5mm Stereo jack (min. 120hm impedance).

Act on TACT_SW and on DIP SW sections according to channel selection, identification, scrambling needs.

At USER_BIT pin, serialized data steam (max. 5Kbps), as sent out from transmitter, is made available with no interference on digitalized audio.

Data examples:

- a) remote control encoded command,
- b) title of musical composition being transmitted, etc...

See RX AUDIO 2.4 650201005G Datasheet and User Manual for further information.