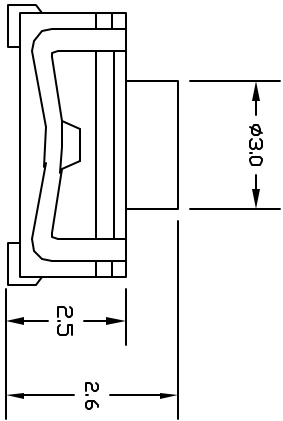
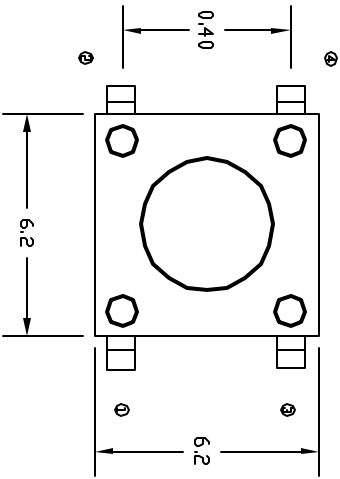


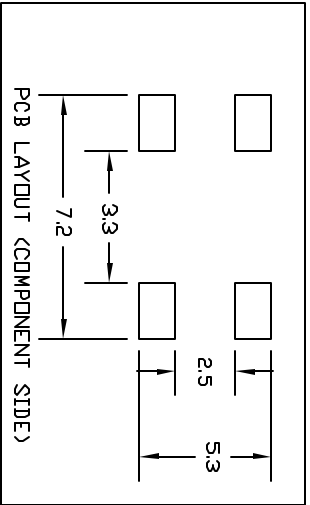
ALL RIGHTS RESERVED. NO PORTION OF THIS PUBLICATION, WHETHER IN WHOLE OR IN PART CAN BE REPRODUCED WITHOUT THE EXPRESS WRITTEN CONSENT OF SPC TECHNOLOGY.

SPC-F005.DWG

REVISIONS		DWG. NO.	SPC-F005	Effective 7/8/02	DWG. No. 1308			
DWG #	REV	DESCRIPTION	DRAWN	DATE	CHECKD	DATE	APPRVD	DATE
XX	XX	XXXX	XXXX	27-09-08	XXXX	27-09-08	XXXX	27-09-08



PAD MOUNTING OPTION



PCB LAYOUT (COMPONENT SIDE)

### SPECIFICATIONS

**ELECTRICAL:**  
 CONTACT RATING: 50mA AT 12 VDC  
 CONTACT RESISTANCE: 100 MILLI OHMS MAX. DC RESISTANCE  
 INSULATION RESISTANCE: 100 MEG OHMS MIN AT 100 VDC  
 DIELECTRIC STRENGTH: 250 VAC FOR 1 MINUTE

**MECHANICAL:**  
 OPERATING LIFE: 500,000 CYCLES/500,000 CYCLES MIN.  
 TRAVEL: 0.25 ± 0.01mm  
 Operating Force: 160mF

**MATERIAL:**  
 FRAME: STEEL, TIN PLATED, 100 MICRONS MIN. OR STAINLESS STEEL  
 HOUSING: NYLON 4/6 G30, UL94V-0 BLACK  
 ACTUATOR, CONTACTS: NYLON 4/6 G30, UL94V-0, BLACK  
 TERMINAL: COPPER ALLOY, SILVER PLATED  
 0.3MM BRASS, SILVER PLATED

**ENVIRONMENTAL:**  
 OPERATING TEMPERATURE: -20°C TO +20°C  
 STORAGE TEMPERATURE: -30°C TO +80°C

### DISCLAIMER:

ALL STATEMENTS AND TECHNICAL INFORMATION CONTAINED HEREIN ARE BASED UPON INFORMATION AND/OR TESTS WE BELIEVE TO BE ACCURATE AND RELIABLE. SINCE CONDITIONS OF USE ARE BEYOND OUR CONTROL, THE USER SHALL DETERMINE THE SUITABILITY OF THE PRODUCT FOR THE INTENDED USE AND ASSUME ALL RISK AND LIABILITY WHATSOEVER IN CONNECTION THEREWITH.

### TOLERANCES:

UNLESS OTHERWISE SPECIFIED, DIMENSIONS ARE FOR REFERENCE PURPOSES ONLY.

DRAWN BY:	DATE:
XXXX	27-09-08
CHECKED BY:	DATE:
XXXX	27-09-08
APPROVED BY:	DATE:
XXXX	27-09-08

### DRAWING TITLE:

Tact Switch

SIZE	DWG. NO.	ELECTRONIC FILE	REV
A	SPC12369	53H6631	A
SCALE:	NTS	U.O.M.: INCHES [mm]	SHEET: 1 OF 1