



ALL RIGHTS RESERVED. NO PORTION OF THIS PUBLICATION, WHETHER IN WHOLE OR IN PART CAN BE REPRODUCED WITHOUT THE EXPRESS WRITTEN CONSENT OF SPC TECHNOLOGY.

SPC-F005.DWG

REVISIONS

DOC. NO. SPC-F005 * Effective: 7/8/02 * DCP No: 1398

DCP #	REV	DESCRIPTION	DRAWN	DATE	CHECKD	DATE	APPRVD	DATE
1501	A	RELEASED	JWM	9/22/03	HO	9/23/03	DJC	9/23/03

SPECIFICATIONS

Electrical

- Contact Rating: 50mA at 12 VDC
- Contact Resistance: 100 milliohms max.
- Insulation Resistance: 100 Megohms min. at 100 VDC
- Dielectric Strength: 250 VAC for 1 minute

Mechanical

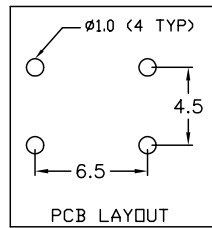
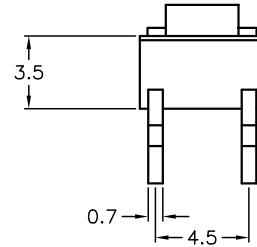
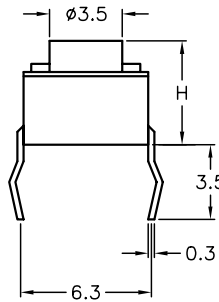
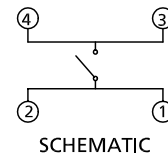
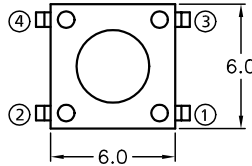
- Operating Life: 100,000 cycles min.
- Travel: 0.25

Environmental

- Operating Temperature: -20°C to 70°C
- Storage Temperature: -30°C to 80°C

Material

- Housing: Nylon 4/6 G30, UL94V-0, Black
- Actuator: Nylon 4/6 G30, UL94V-0, Black
- Terminals: Brass, Silver Plated
- Contact: Stainless Steel



SPC Type No.	"H" Dim Actuator Height (mm)	Operating Force (gf)
SPC12367	4.3	160
SPC12370	5.0	160
SPC12373	4.3	120
SPC12374	4.3	280
SPC12375	5.0	280
SPC12378	5.0	160
SPC12380	9.5	280
SPC12383	9.5	120

DISCLAIMER: ALL STATEMENTS AND TECHNICAL INFORMATION CONTAINED HEREIN ARE BASED UPON INFORMATION AND/OR TESTS WE BELIEVE TO BE ACCURATE AND RELIABLE. SINCE CONDITIONS OF USE ARE BEYOND OUR CONTROL, THE USER SHALL DETERMINE THE SUITABILITY OF THE PRODUCT FOR THE INTENDED USE AND ASSUME ALL RISK AND LIABILITY WHATSOEVER IN CONNECTION THEREWITH.

TOLERANCES: UNLESS OTHERWISE SPECIFIED, DIMENSIONS ARE FOR REFERENCE PURPOSES ONLY.

DRAWN BY:	DATE:
Jeff McVicker	9/22/03
CHECKED BY:	DATE:
Hisham Odish	9/23/03
APPROVED BY:	DATE:
Daniel Carey	9/23/03

DRAWING TITLE:			
Tactile Switch, Surface Mount (SMD), Insertable			
SIZE	DWG. NO.	ELECTRONIC FILE	REV
A	TA-587	TA-587.dwg	A
SCALE: NTS	U.O.M.: Millimeters	SHEET: 1 OF 1	